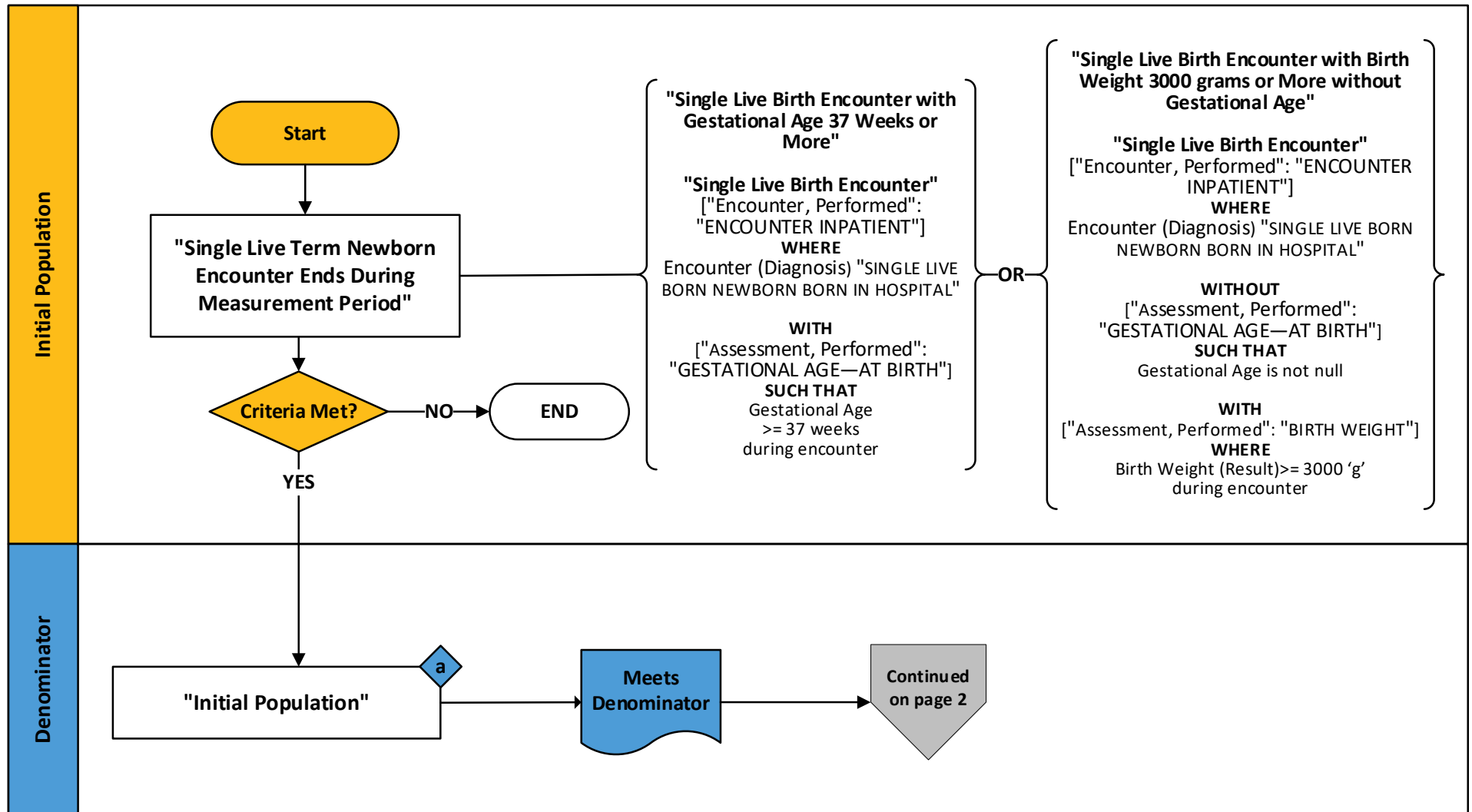


2023 eCQM Flow – CMS9v11: Exclusive Breast Milk Feeding (PC-05)* NQF# 0480e

*This flow diagram represents an overview of population criteria requirements. Please refer to the eCQM measure specification for a complete list of definitions, direct reference codes, data or timing elements included in this measure and required for submission.

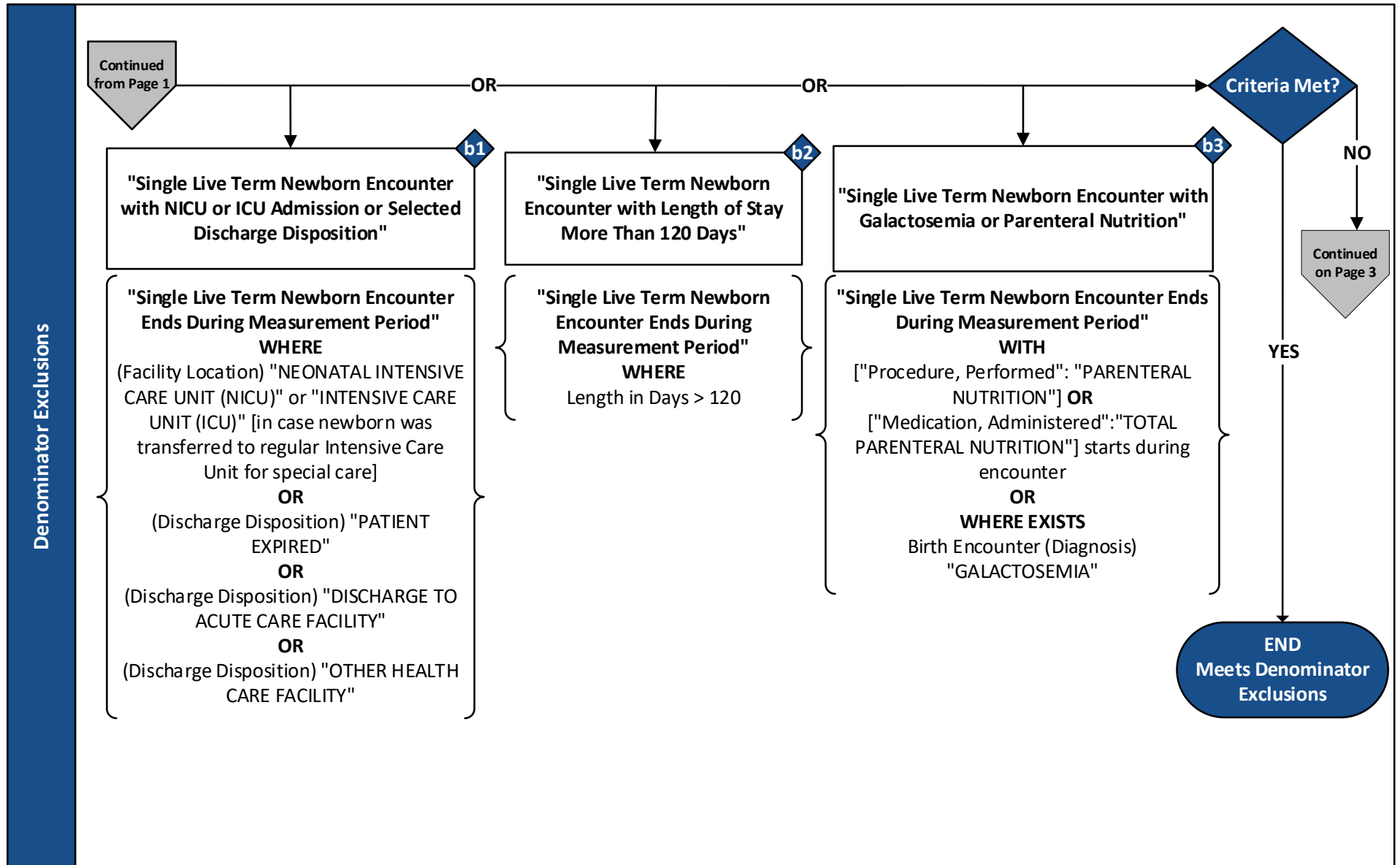
Measure Flow Diagram



2023 eCQM Flow – CMS9v11: Exclusive Breast Milk Feeding (PC-05)* NQF# 0480e

*This flow diagram represents an overview of population criteria requirements. Please refer to the eCQM measure specification for a complete list of definitions, direct reference codes, data or timing elements included in this measure and required for submission.

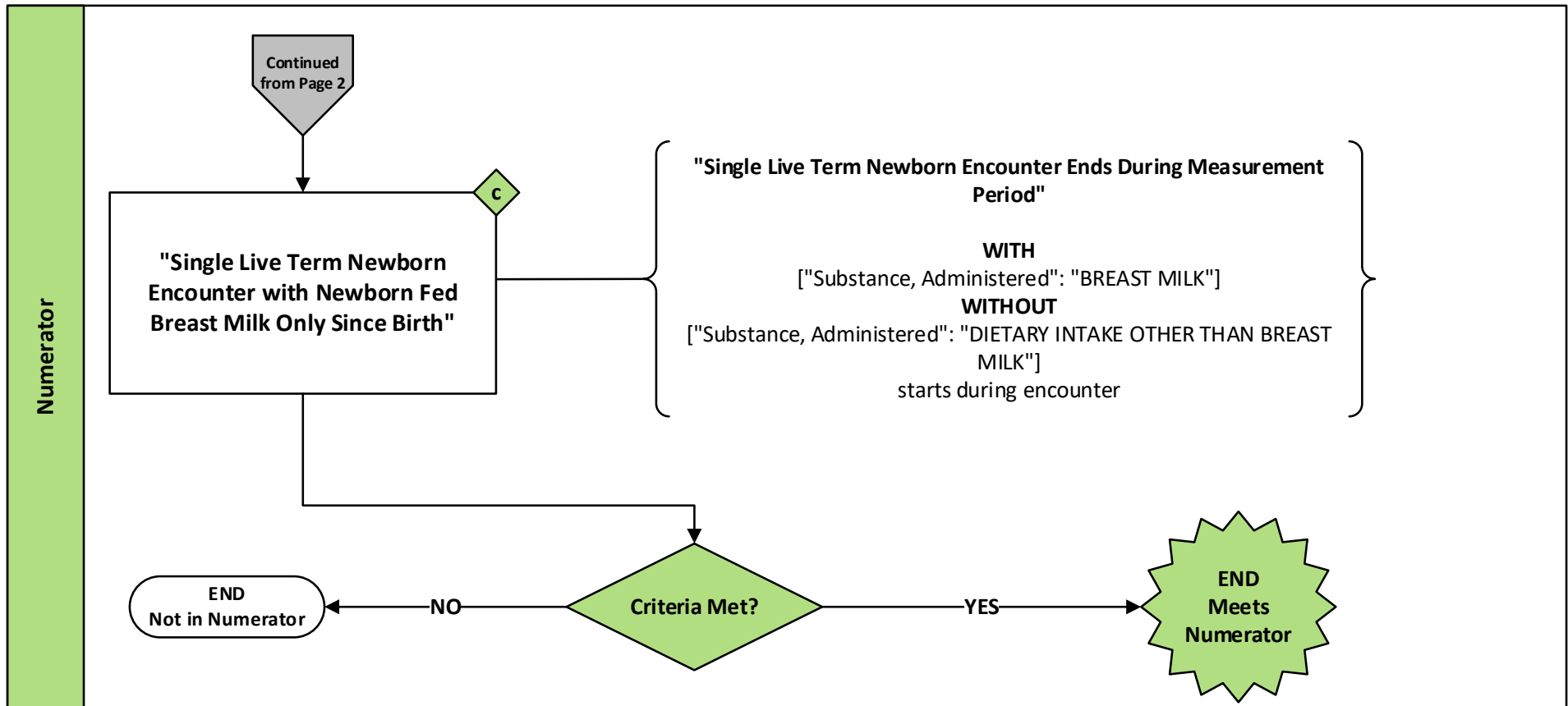
Measure Flow Diagram (Continued)



2023 eCQM Flow – CMS9v11: Exclusive Breast Milk Feeding (PC-05)* NQF# 0480e

*This flow diagram represents an overview of population criteria requirements. Please refer to the eCQM measure specification for a complete list of definitions, direct reference codes, data or timing elements included in this measure and required for submission.

Measure Flow Diagram (Continued)



Sample Calculation

$$\text{Performance Rate} = \frac{\text{Numerator (c = 60)}}{\text{Denominator (a = 100) - Denominator Exclusions (b1 + b2 + b3 = 20)}} = 75\%$$

2023 eCQM Flow – CMS9v11: Exclusive Breast Milk Feeding (PC-05)* NQF# 0480e

**This flow diagram represents an overview of population criteria requirements. Please refer to the eCQM measure specification for a complete list of definitions, direct reference codes, data or timing elements included in this measure and required for submission.*

Measure Flow Narrative

The measure flow diagram on the preceding pages illustrates the steps to determine the population criteria for this measure.

Measure Description	This measure is reported as the overall rate which includes all newborns that were exclusively fed breast milk during the entire hospitalization
Initial Population	<p>Start by identifying the initial population criteria as:</p> <ul style="list-style-type: none"> • inpatient hospitalizations for single live term newborns who were born in the hospital that ends during the measurement period, and with either of the following conditions: <ul style="list-style-type: none"> • an estimated gestational age at birth of ≥ 37 weeks • a birth weight ≥ 3000 grams without an estimated gestational age at birth
Denominator	The denominator is the same as the initial population
Denominator Exclusions	<p>The denominator exclusions criteria identify a subset of the denominator population by excluding inpatient hospitalizations for newborns with any of the following:</p> <ul style="list-style-type: none"> • admitted to the neonatal intensive care unit (NICU) or transferred to a regular intensive care unit (ICU) • transferred to an acute care facility, or other health care facility • expired during the hospitalization • a length of stay greater than 120 days that ends during the measurement period • a diagnosis of galactosemia • subject to parenteral nutrition

2023 eCQM Flow – CMS9v11: Exclusive Breast Milk Feeding (PC-05)* NQF# 0480e

**This flow diagram represents an overview of population criteria requirements. Please refer to the eCQM measure specification for a complete list of definitions, direct reference codes, data or timing elements included in this measure and required for submission.*

Measure Flow Narrative (Continued)

The measure flow diagram on the preceding pages illustrates the steps to determine the population criteria for this measure.

Numerator	The numerator criteria identify a subset of the denominator population (that did not meet the denominator exclusions criteria) by including inpatient hospitalizations for newborns who were fed breast milk only since birth
-----------	---