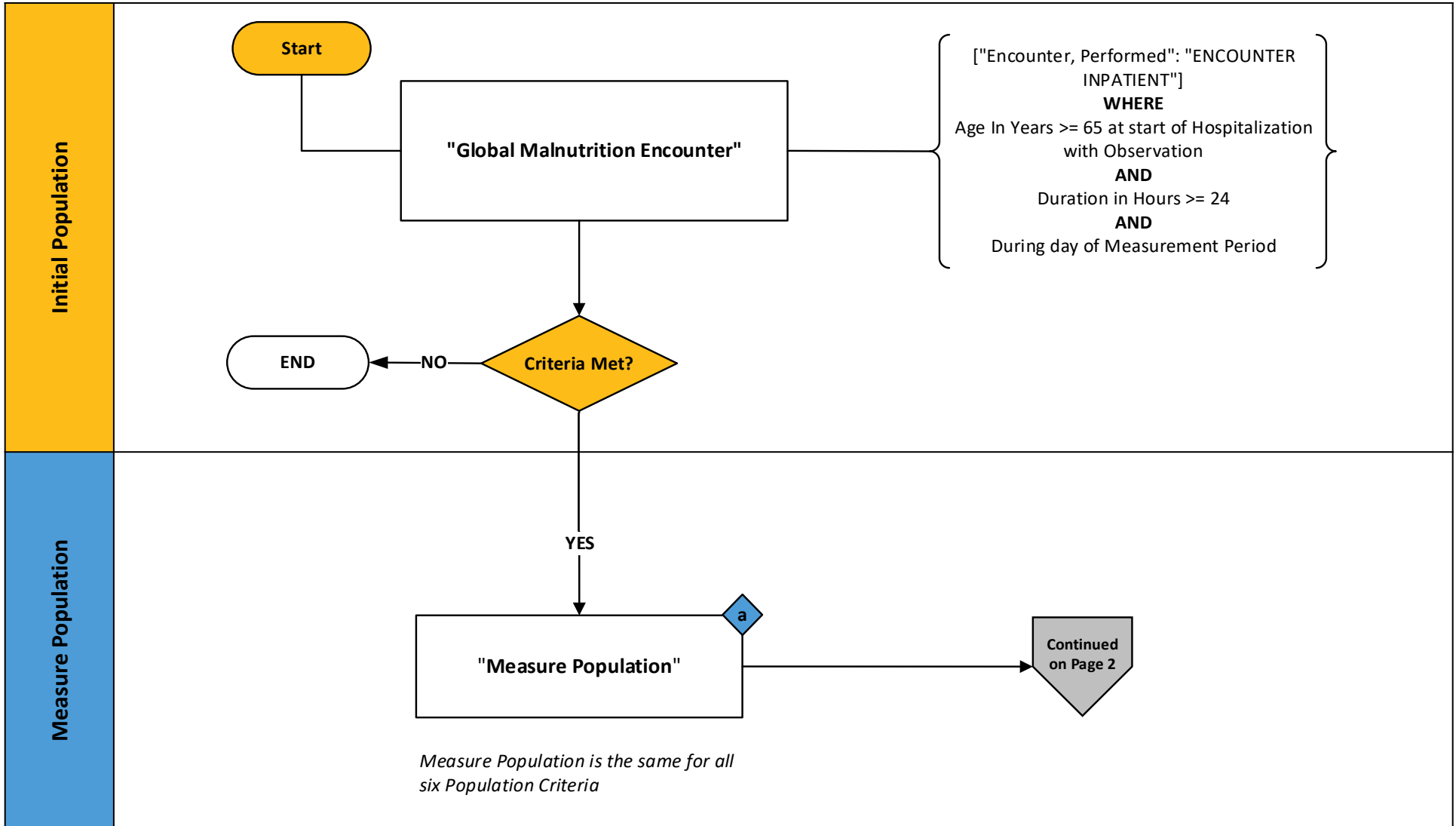


2024 eCQM Flow – CMS986v2: Global Malnutrition Composite Score* NQF# 3592e

*This flow diagram represents an overview of population criteria requirements. Please refer to the eCQM measure specification for a complete list of definitions, direct reference codes, data or timing elements included in this measure and required for submission.

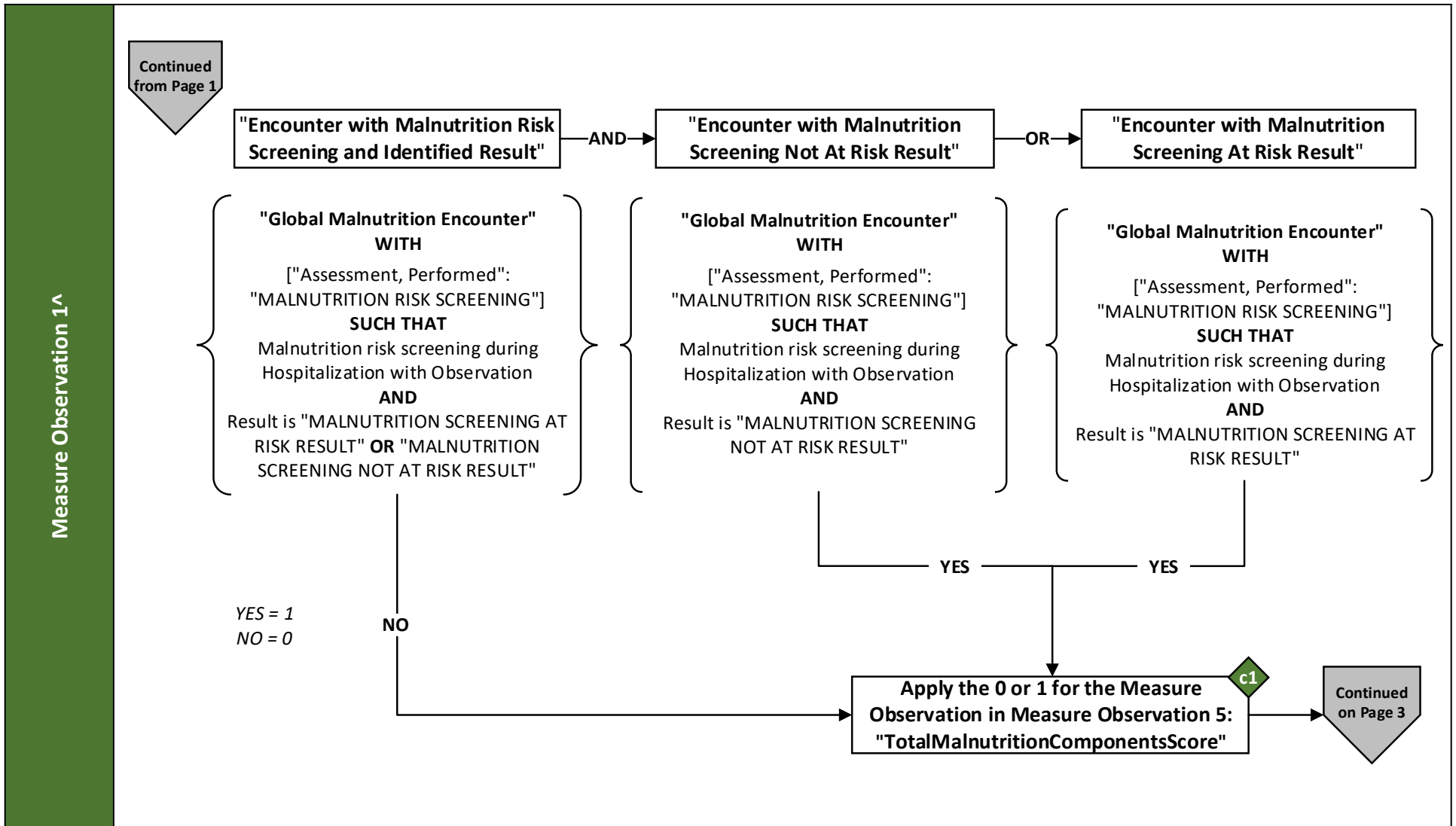
Measure Flow Diagram



2024 eCQM Flow – CMS986v2: Global Malnutrition Composite Score* NQF# 3592e

*This flow diagram represents an overview of population criteria requirements. Please refer to the eCQM measure specification for a complete list of definitions, direct reference codes, data or timing elements included in this measure and required for submission.

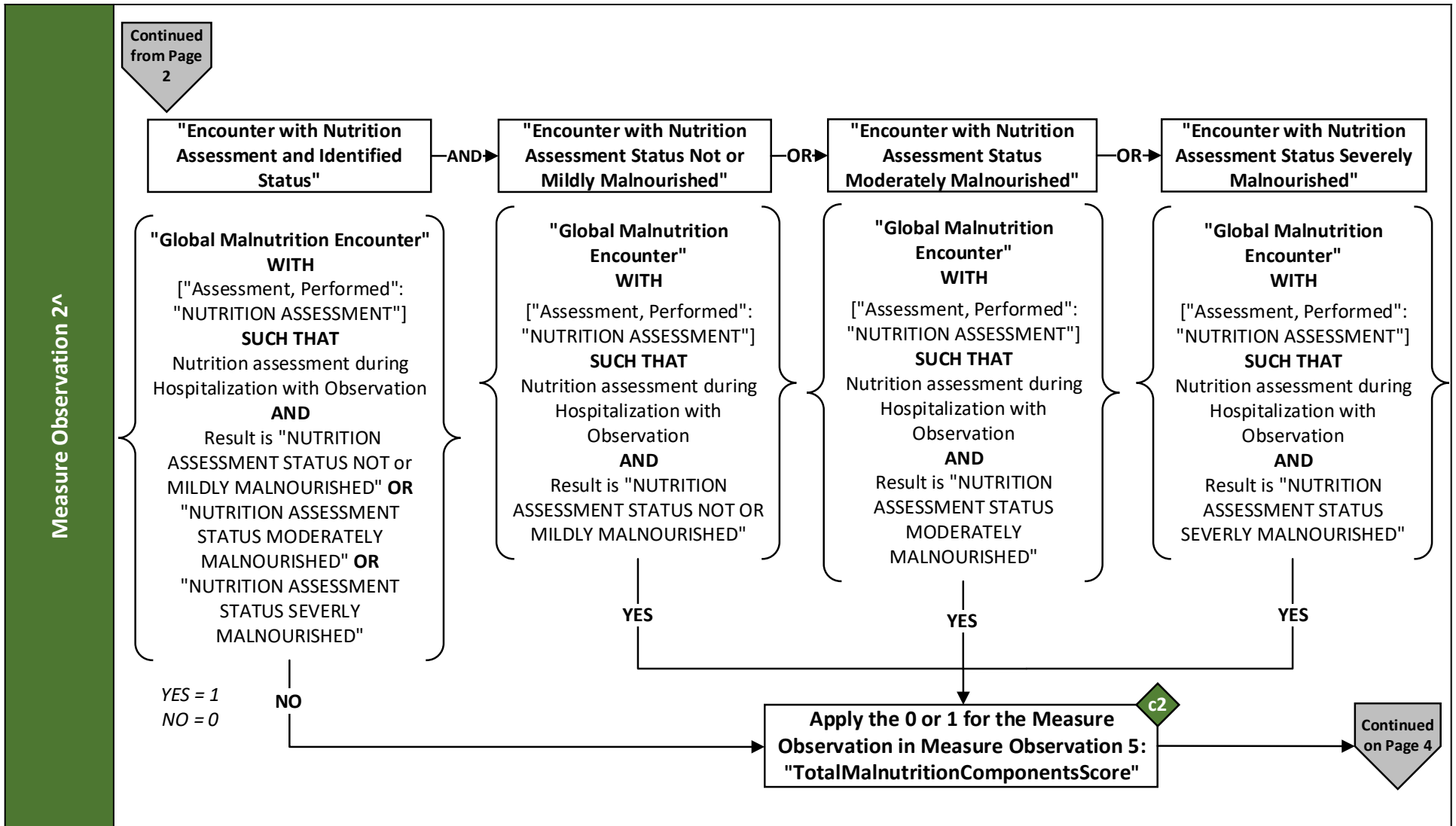
Measure Flow Diagram (Continued)



2024 eCQM Flow – CMS986v2: Global Malnutrition Composite Score* NQF# 3592e

*This flow diagram represents an overview of population criteria requirements. Please refer to the eCQM measure specification for a complete list of definitions, direct reference codes, data or timing elements included in this measure and required for submission.

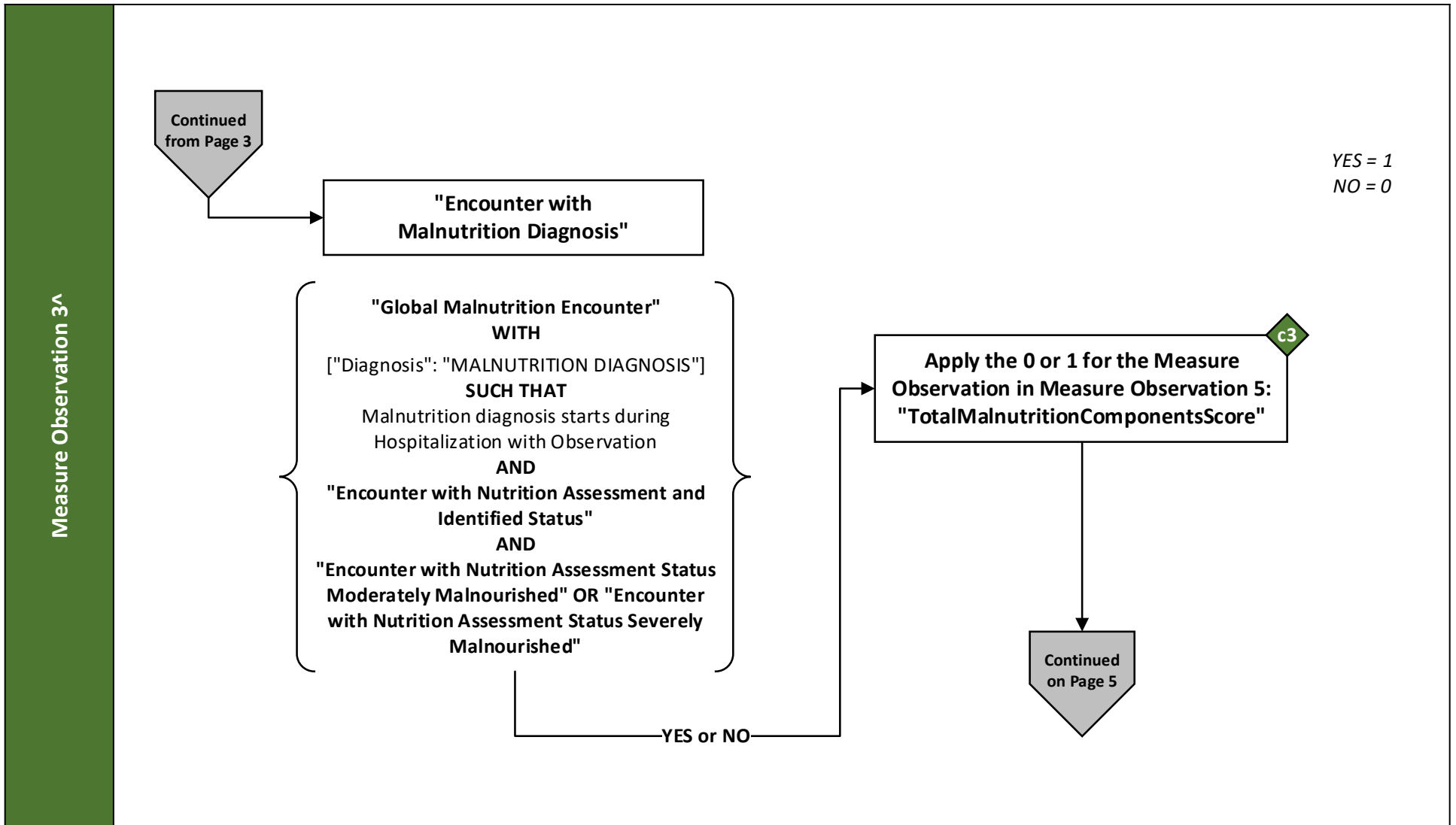
Measure Flow Diagram (Continued)



2024 eCQM Flow – CMS986v2: Global Malnutrition Composite Score* NQF# 3592e

**This flow diagram represents an overview of population criteria requirements. Please refer to the eCQM measure specification for a complete list of definitions, direct reference codes, data or timing elements included in this measure and required for submission.*

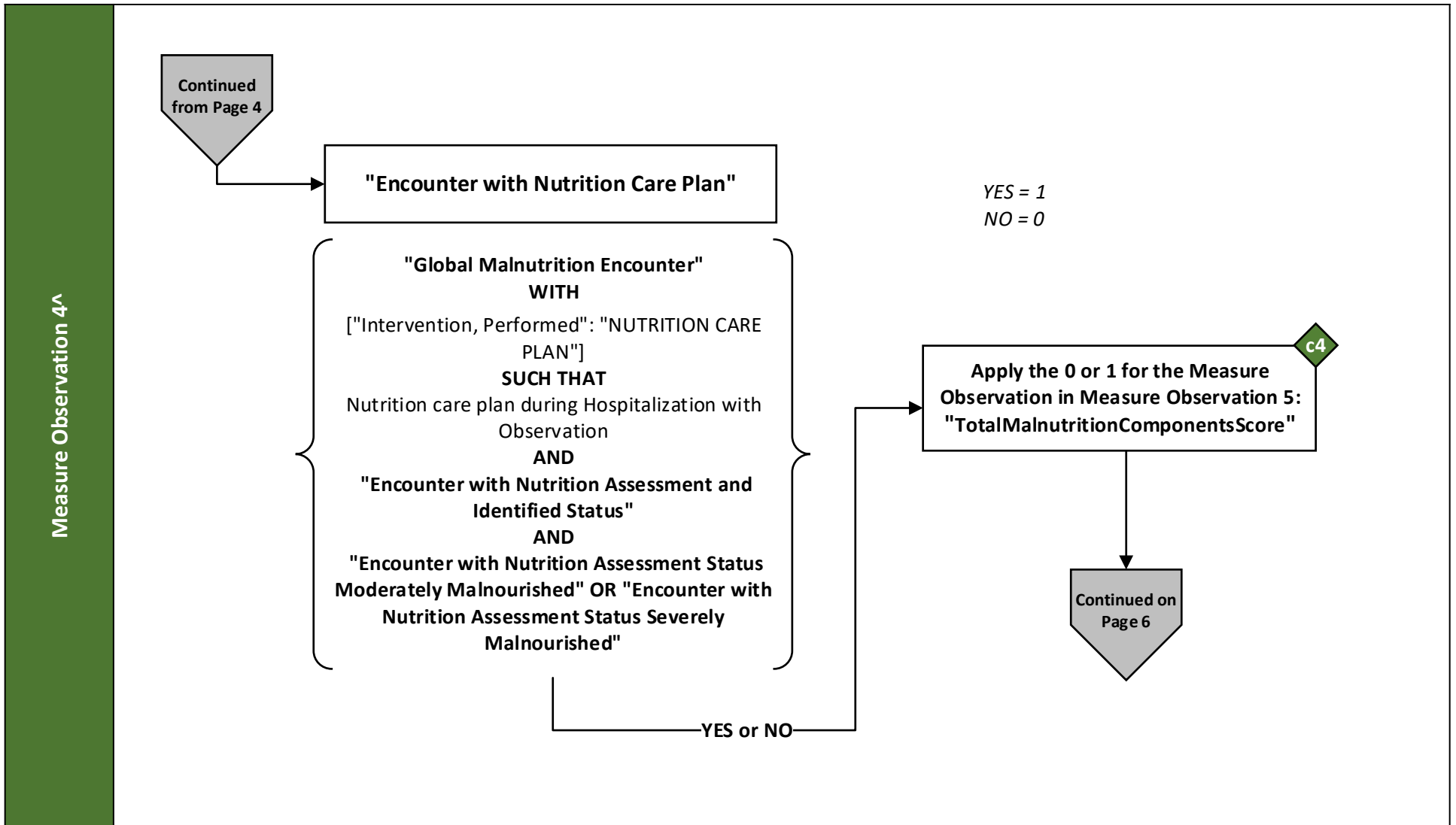
Measure Flow Diagram (Continued)



2024 eCQM Flow – CMS986v2: Global Malnutrition Composite Score* NQF# 3592e

**This flow diagram represents an overview of population criteria requirements. Please refer to the eCQM measure specification for a complete list of definitions, direct reference codes, data or timing elements included in this measure and required for submission.*

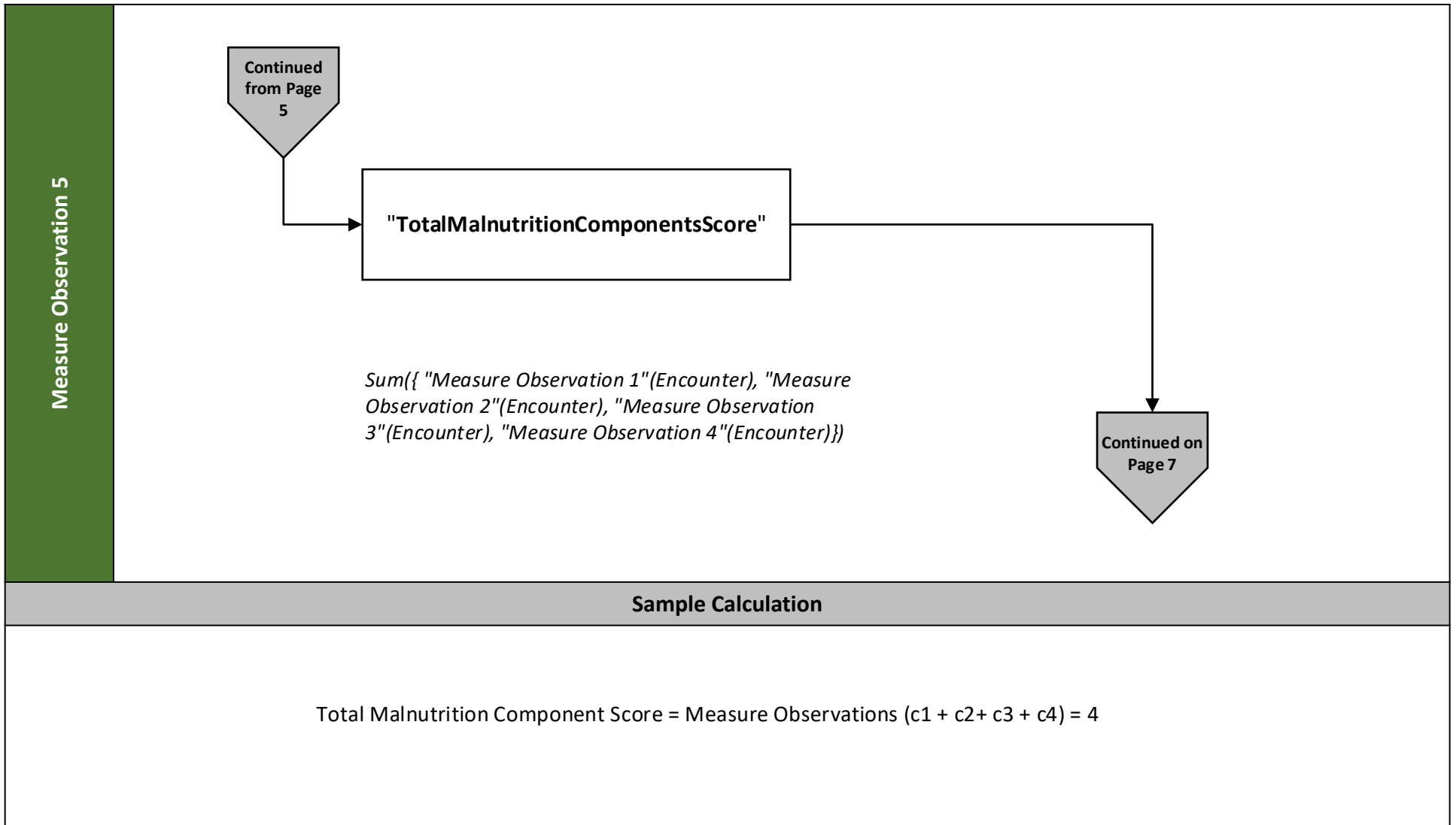
Measure Flow Diagram (Continued)



2024 eCQM Flow – CMS986v2: Global Malnutrition Composite Score* NQF# 3592e

*This flow diagram represents an overview of population criteria requirements. Please refer to the eCQM measure specification for a complete list of definitions, direct reference codes, data or timing elements included in this measure and required for submission.

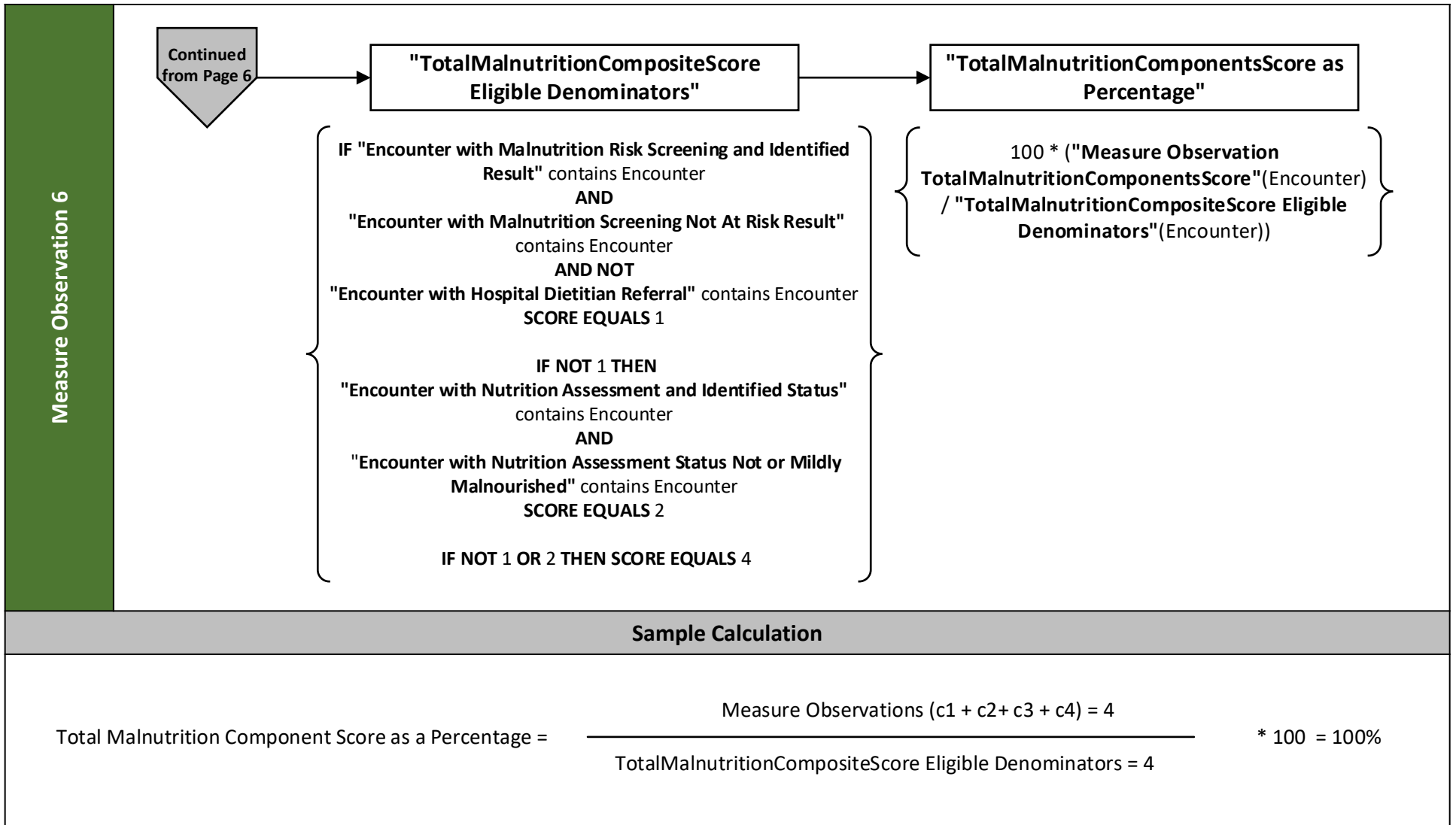
Measure Flow Diagram (Continued)



2024 eCQM Flow – CMS986v2: Global Malnutrition Composite Score* NQF# 3592e

*This flow diagram represents an overview of population criteria requirements. Please refer to the eCQM measure specification for a complete list of definitions, direct reference codes, data or timing elements included in this measure and required for submission.

Measure Flow Diagram (Continued)



2024 eCQM Flow – CMS986v2: Global Malnutrition Composite Score* NQF# 3592e

**This flow diagram represents an overview of population criteria requirements. Please refer to the eCQM measure specification for a complete list of definitions, direct reference codes, data or timing elements included in this measure and required for submission.*

Measure Flow Narrative

The measure flow diagram on the preceding pages illustrates the steps to determine the population criteria for this measure.

Measure Description	<p>This measure assesses the percentage of hospitalizations for adults aged 65 years and older at the start of the inpatient encounter during the measurement period with a length of stay equal to or greater than 24 hours who received optimal malnutrition care during the current inpatient hospitalization where care performed was appropriate to the patient's level of malnutrition risk and severity. Malnutrition care best practices recommend that for each hospitalization, adult inpatients are screened for malnutrition risk, assessed to confirm findings of malnutrition risk or for a hospital dietitian referral order, and if identified with a "moderate" or "severe" malnutrition status in the current performed malnutrition assessment, receive a current "moderate" or "severe" malnutrition diagnosis and have a current nutrition care plan performed.</p>
Initial Population	<p>Start by identifying the initial population criteria as a valid encounter defined as inpatient hospitalizations during the measurement period with length of stay of 24 hours or more among individuals 65 years of age and older at the start of the inpatient encounter</p>
Measure Population	<p>In a continuous variable measure, this measure construct is called the measure population, rather than the denominator. The measure population is equal to the Initial Population.</p>
Measure Observations	<p>A continuous variable measure has measure observations, rather than a numerator. This is a multi-score measure with six (6) measure observations.</p> <ol style="list-style-type: none"> 1. Measure Observation 1 are "Encounters with Malnutrition Risk Screening and Identified Result" 2. Measure Observation 2 are "Encounters with Nutrition Assessment and Identified Status" 3. Measure Observation 3 are "Encounters with Malnutrition Diagnosis" 4. Measure Observation 4 are "Encounters with Nutrition Care Plan" 5. Measure Observation are "TotalMalnutritionComponentsScore" equals the sum of Measure Observation 1, Measure Observation 2, Measure Observation 3, and Measure Observation 4 6. Measure Observation are "TotalMalnutritionCompositeScore as Percentage" equals ("TotalMalnutritionComponentsScore" divided by "TotalMalnutritionCompositeScore Eligible Denominators") multiplied by 100