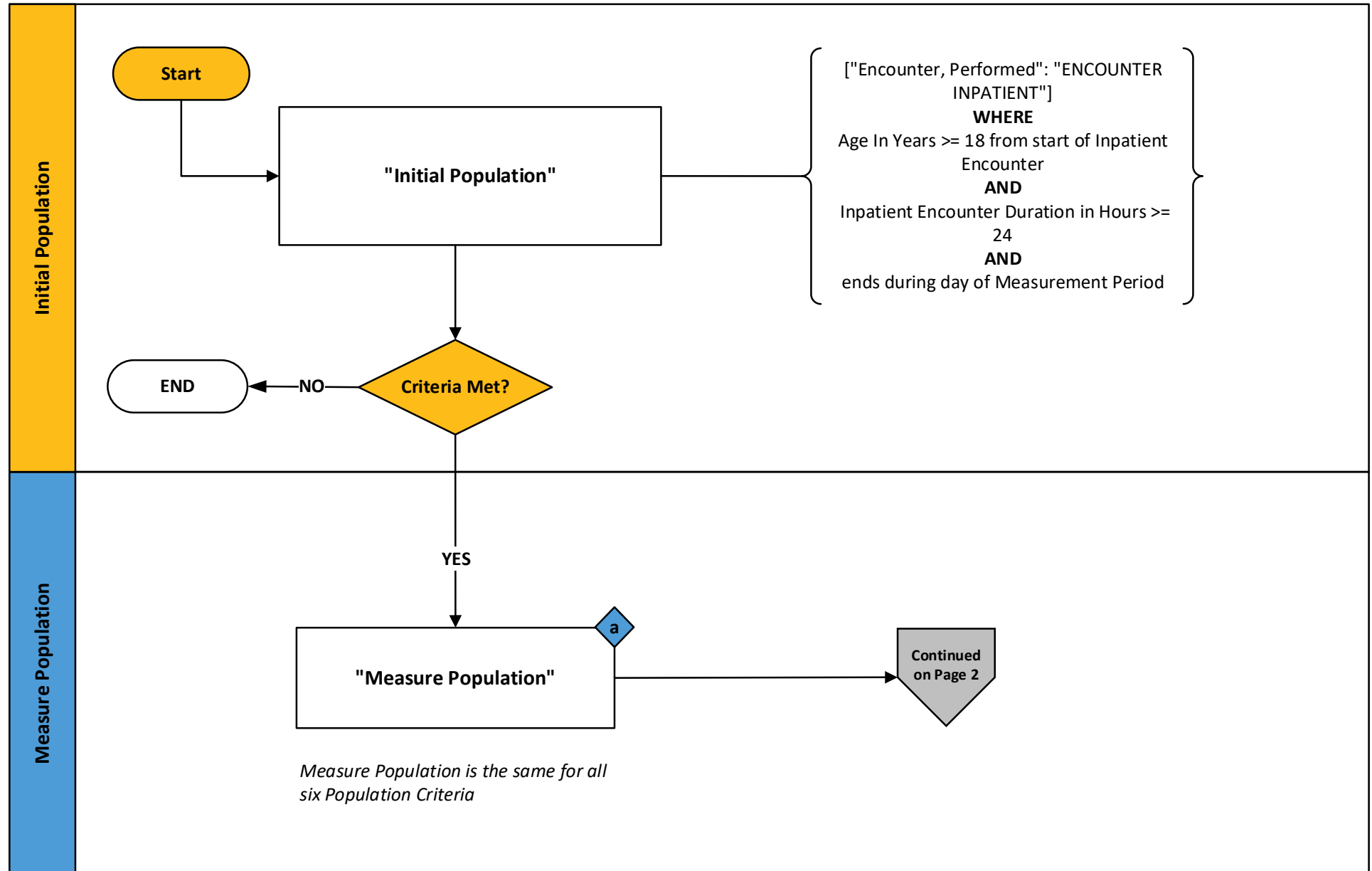


2026 eCQM Flow – CMS986v5: Malnutrition Care Score* CBE# 3592e

*This flow diagram represents an overview of population criteria requirements. Please refer to the eCQM measure specification for a complete list of definitions, direct reference codes, data or timing elements included in this measure and required for submission.

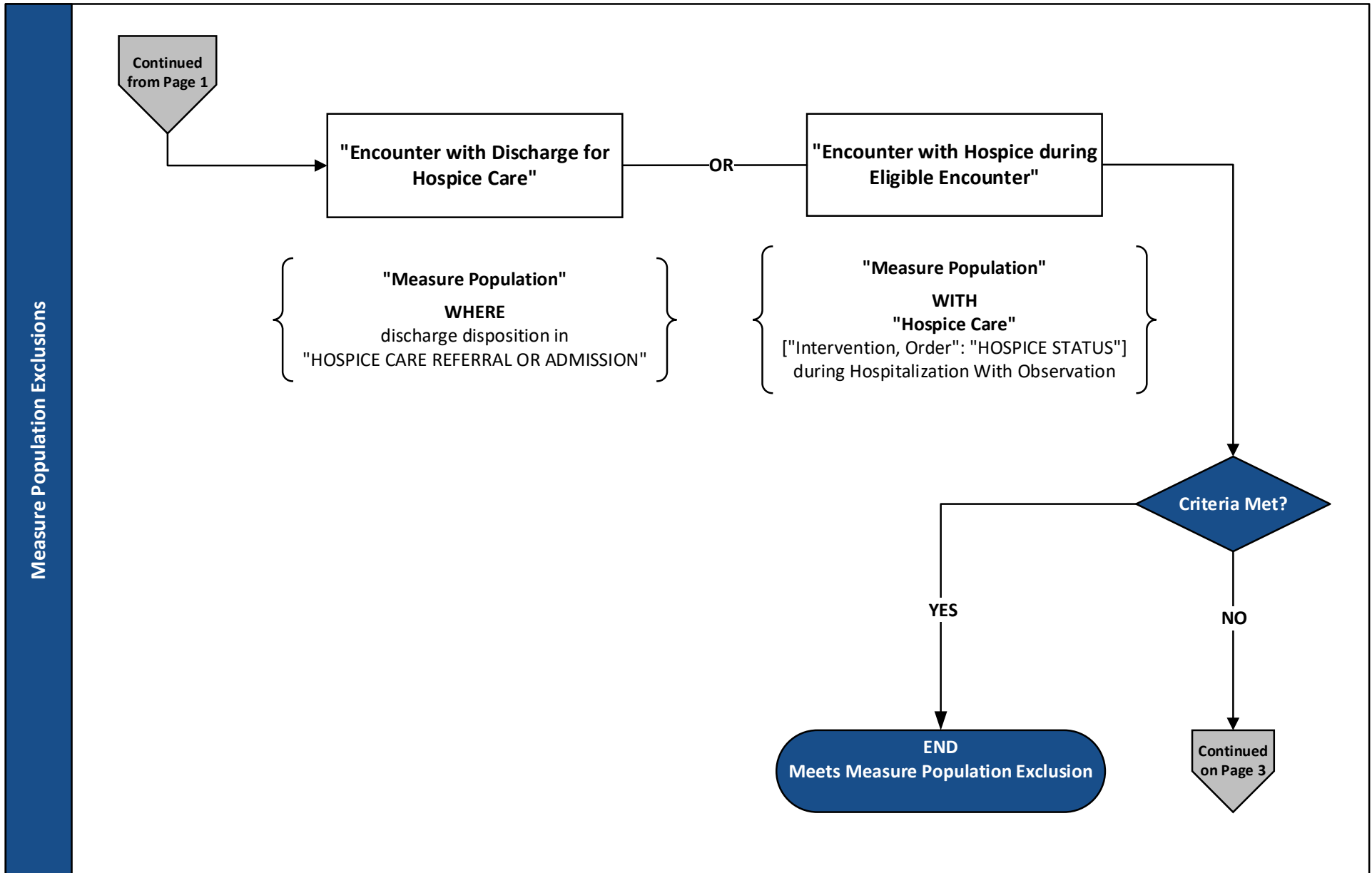
Measure Flow Diagram



2026 eCQM Flow – CMS986v5: Malnutrition Care Score* CBE# 3592e

**This flow diagram represents an overview of population criteria requirements. Please refer to the eCQM measure specification for a complete list of definitions, direct reference codes, data or timing elements included in this measure and required for submission.*

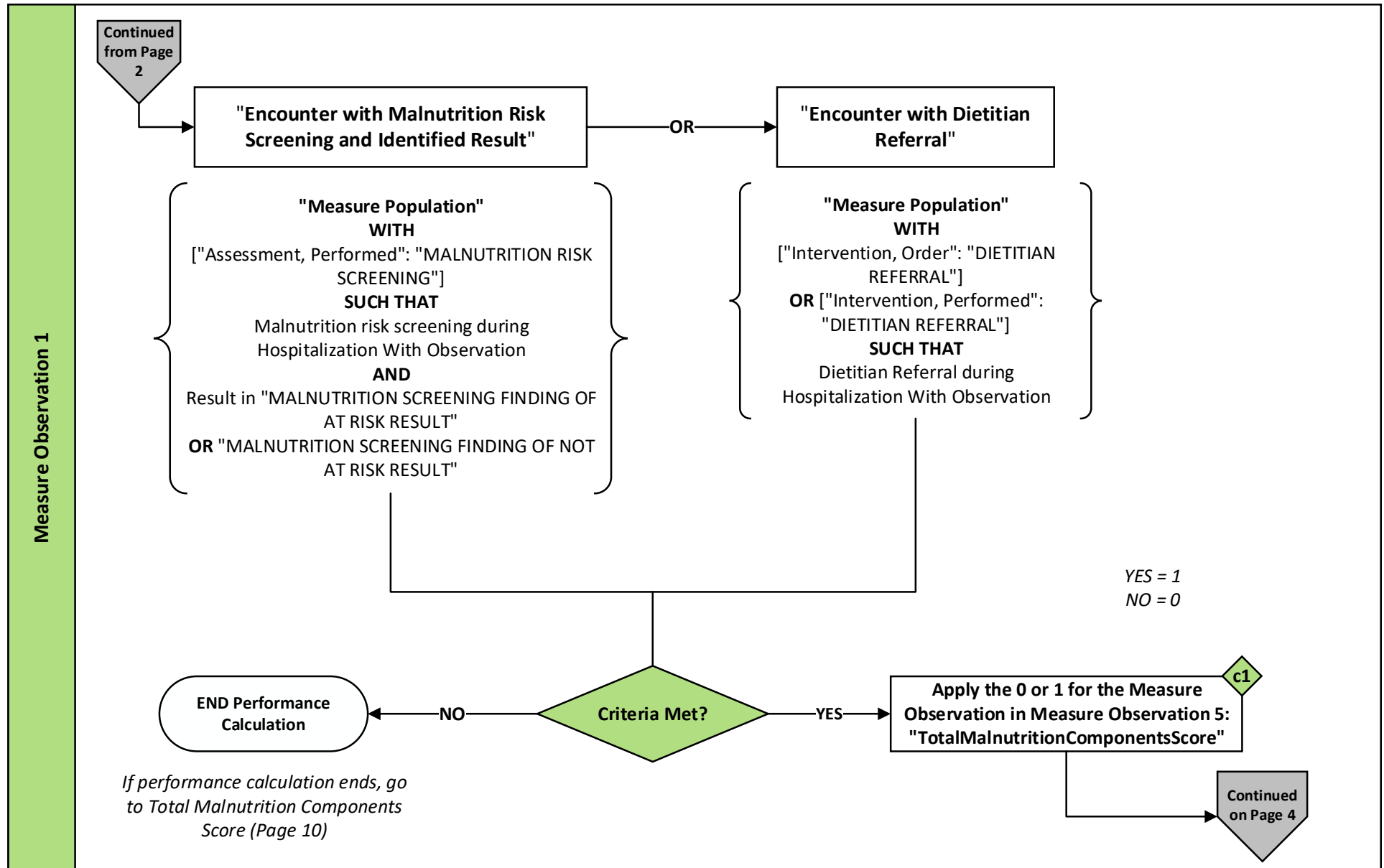
Measure Flow Diagram (Continued)



2026 eCQM Flow – CMS986v5: Malnutrition Care Score* CBE# 3592e

**This flow diagram represents an overview of population criteria requirements. Please refer to the eCQM measure specification for a complete list of definitions, direct reference codes, data or timing elements included in this measure and required for submission.*

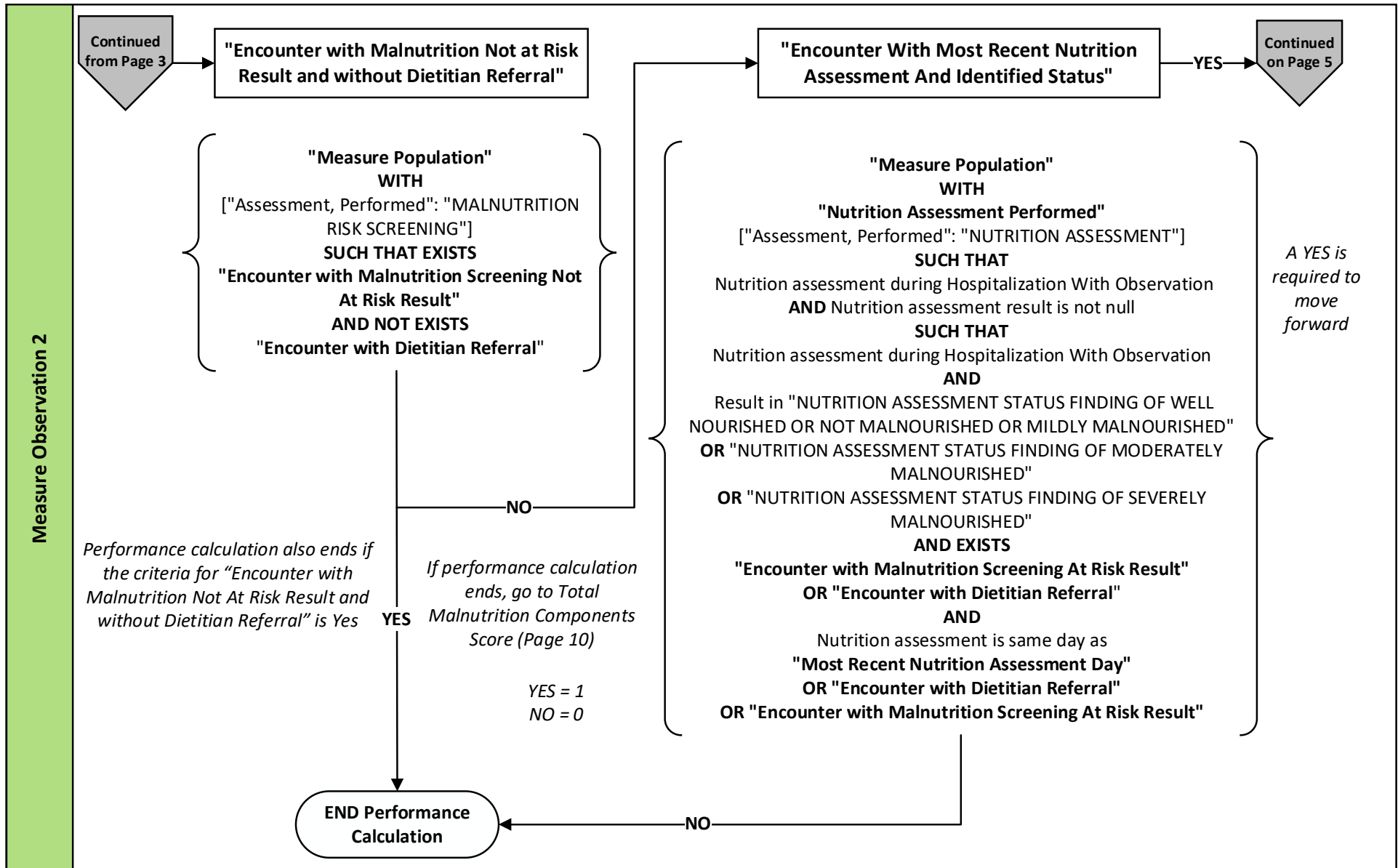
Measure Flow Diagram (Continued)



2026 eCQM Flow – CMS986v5: Malnutrition Care Score* CBE# 3592e

*This flow diagram represents an overview of population criteria requirements. Please refer to the eCQM measure specification for a complete list of definitions, direct reference codes, data or timing elements included in this measure and required for submission.

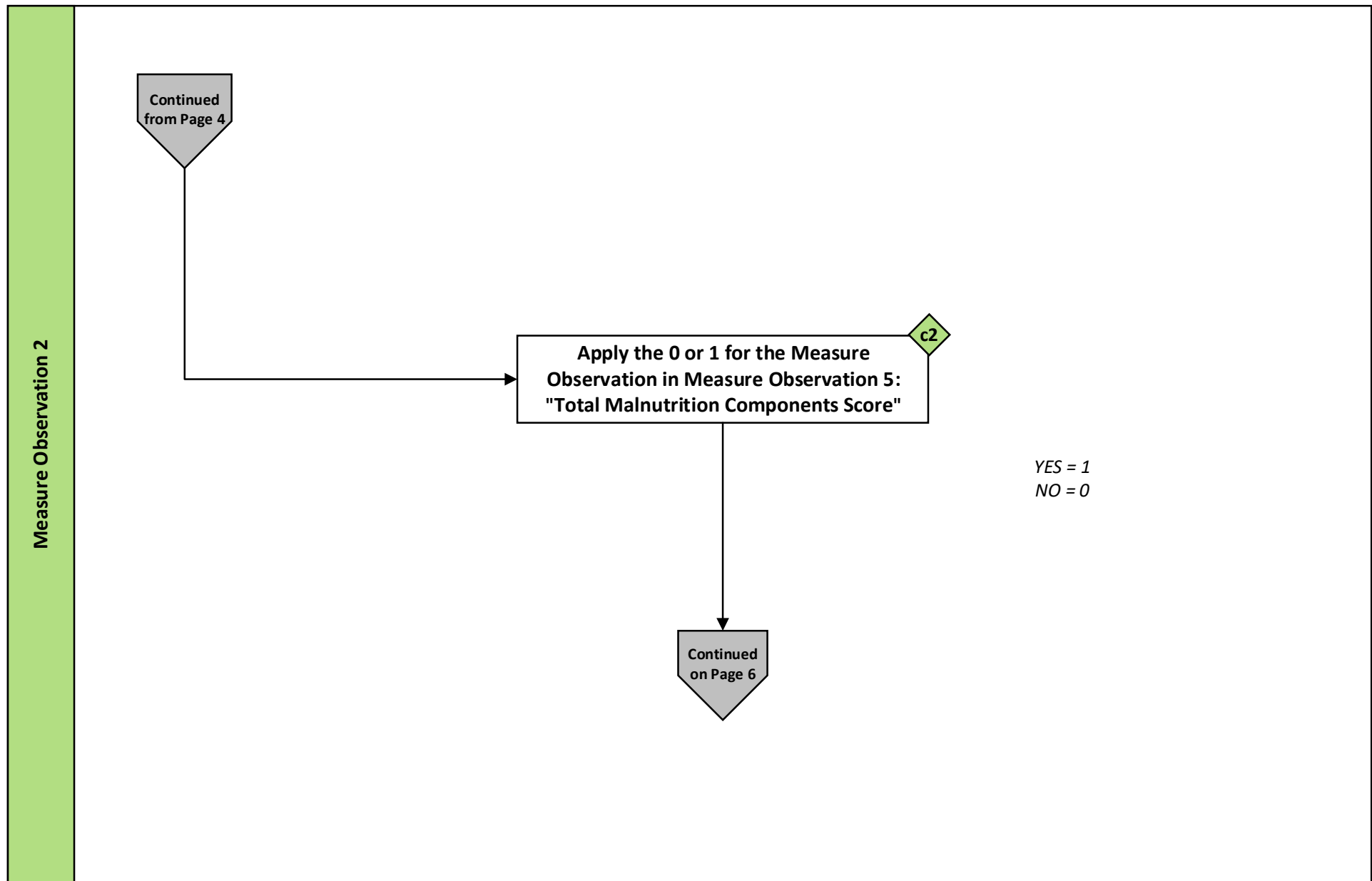
Measure Flow Diagram (Continued)



2026 eCQM Flow – CMS986v5: Malnutrition Care Score* CBE# 3592e

**This flow diagram represents an overview of population criteria requirements. Please refer to the eCQM measure specification for a complete list of definitions, direct reference codes, data or timing elements included in this measure and required for submission.*

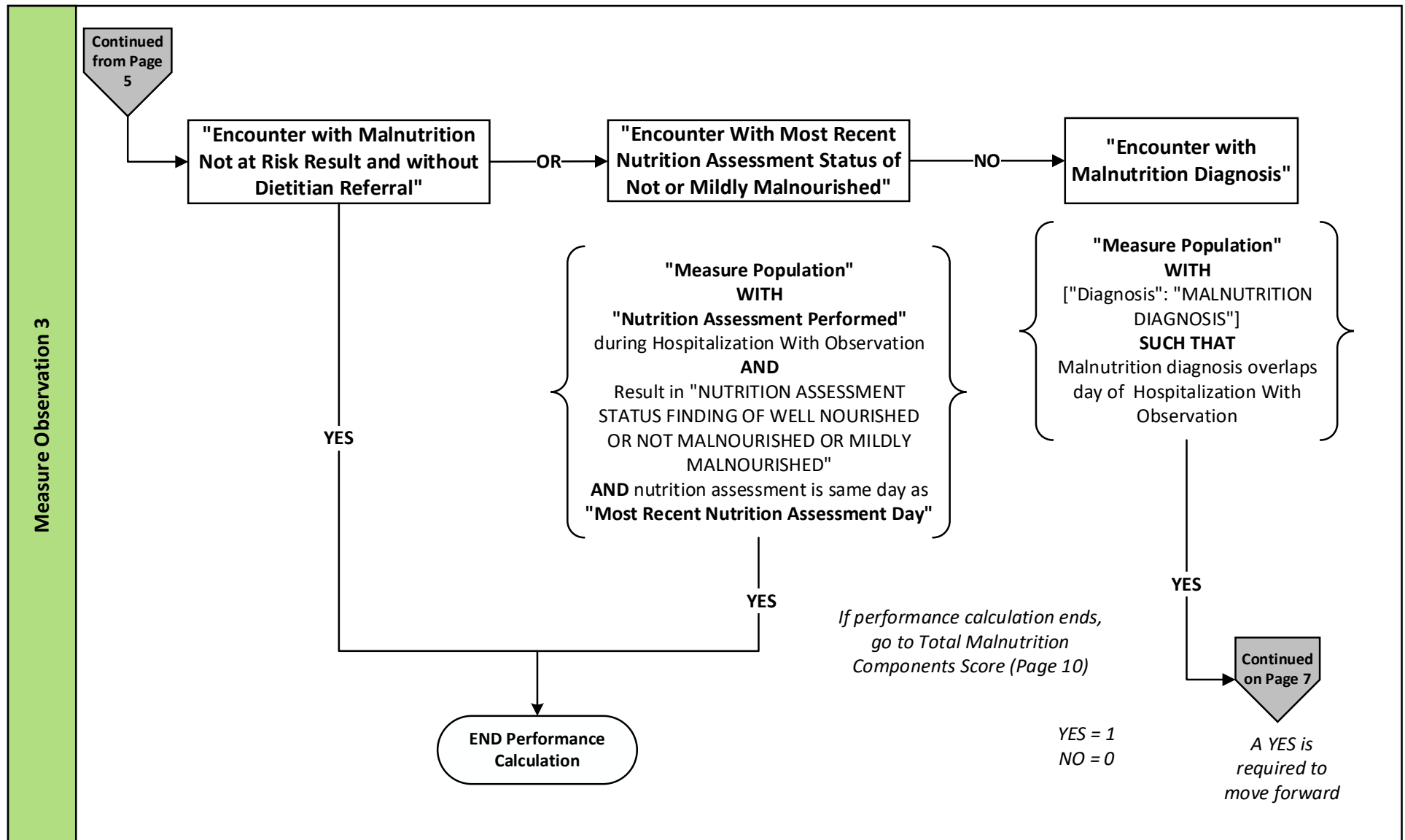
Measure Flow Diagram (Continued)



2026 eCQM Flow – CMS986v5: Malnutrition Care Score* CBE# 3592e

**This flow diagram represents an overview of population criteria requirements. Please refer to the eCQM measure specification for a complete list of definitions, direct reference codes, data or timing elements included in this measure and required for submission.*

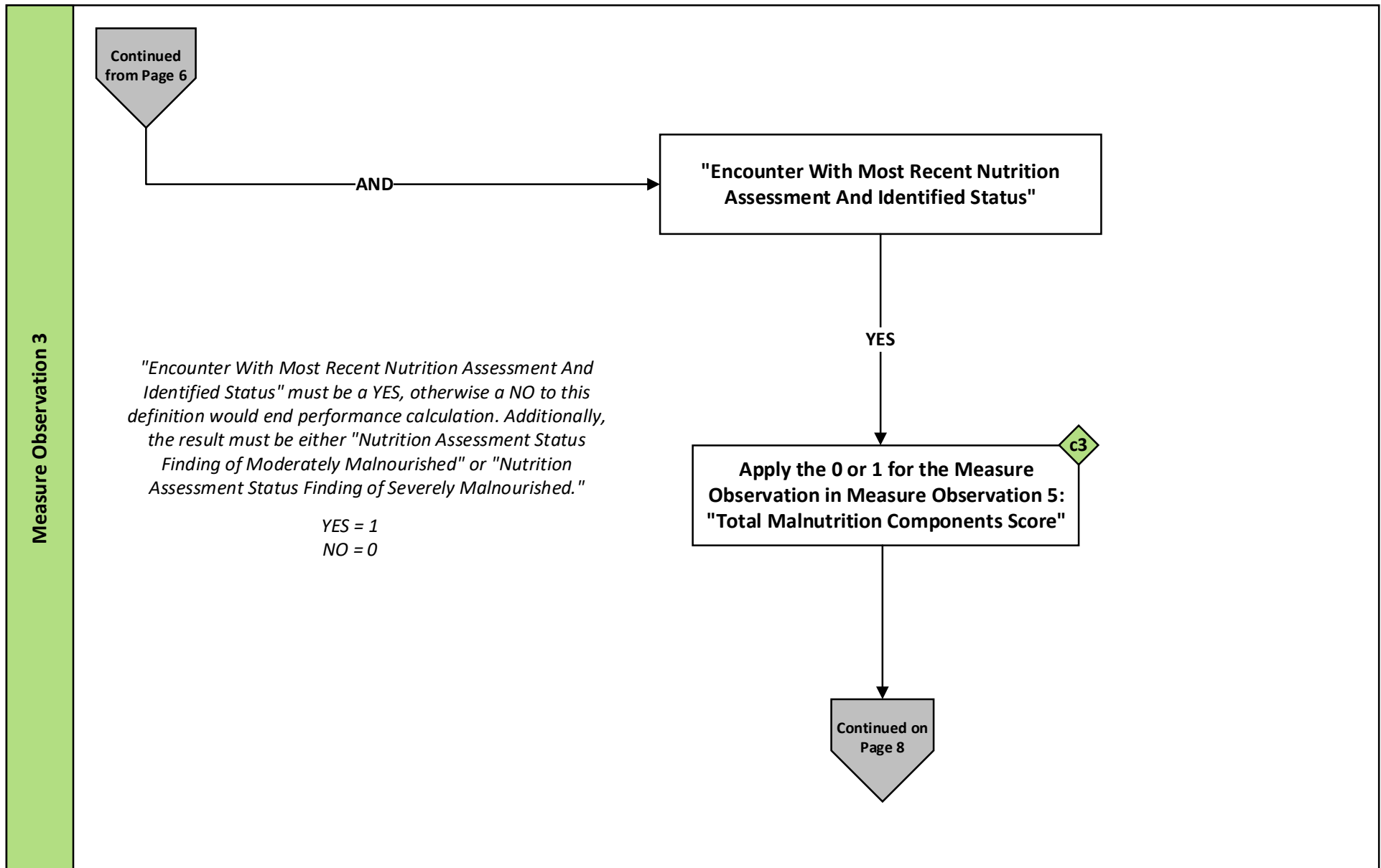
Measure Flow Diagram (Continued)



2026 eCQM Flow – CMS986v5: Malnutrition Care Score* CBE# 3592e

**This flow diagram represents an overview of population criteria requirements. Please refer to the eCQM measure specification for a complete list of definitions, direct reference codes, data or timing elements included in this measure and required for submission.*

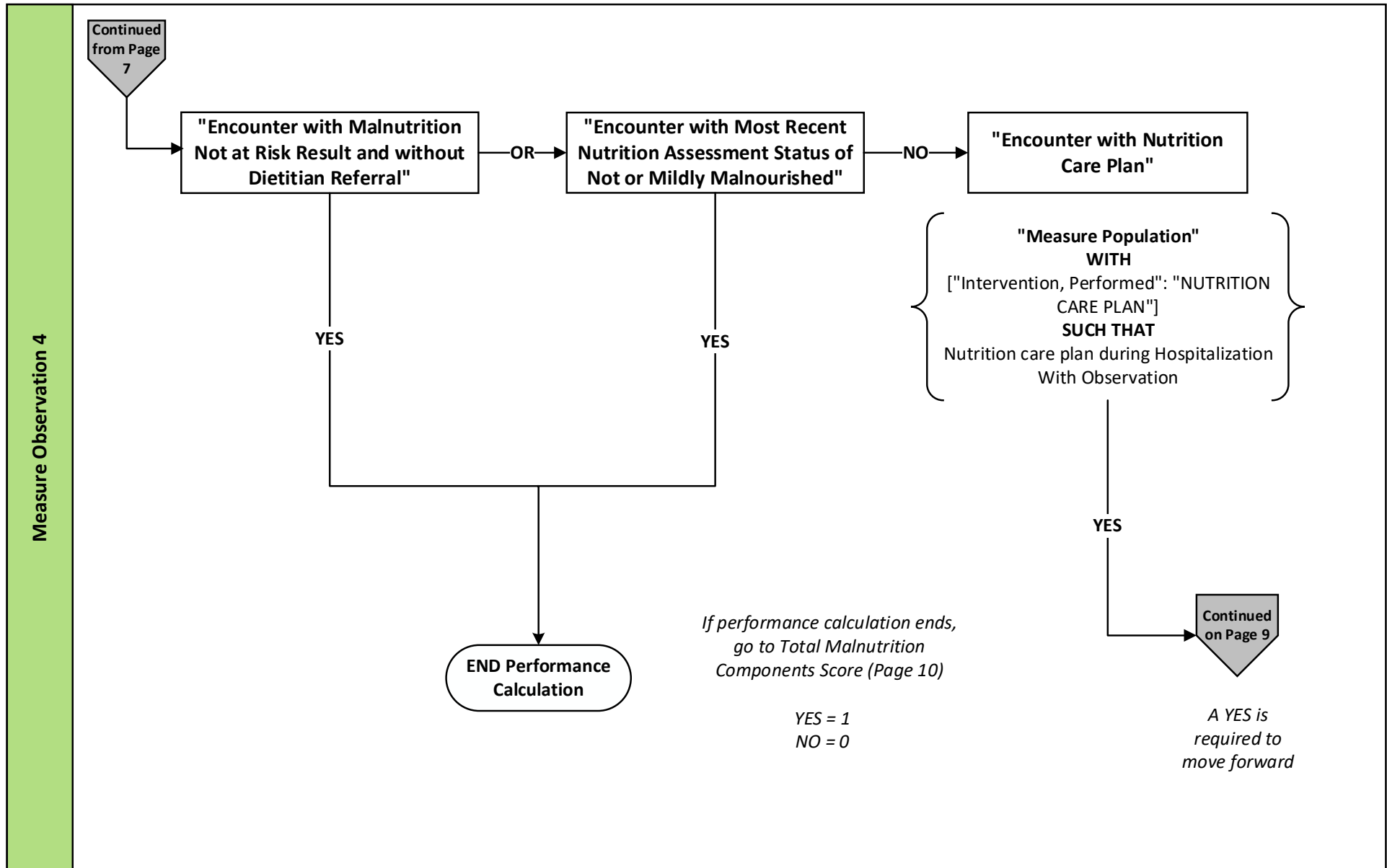
Measure Flow Diagram (Continued)



2026 eCQM Flow – CMS986v5: Malnutrition Care Score* CBE# 3592e

**This flow diagram represents an overview of population criteria requirements. Please refer to the eCQM measure specification for a complete list of definitions, direct reference codes, data or timing elements included in this measure and required for submission.*

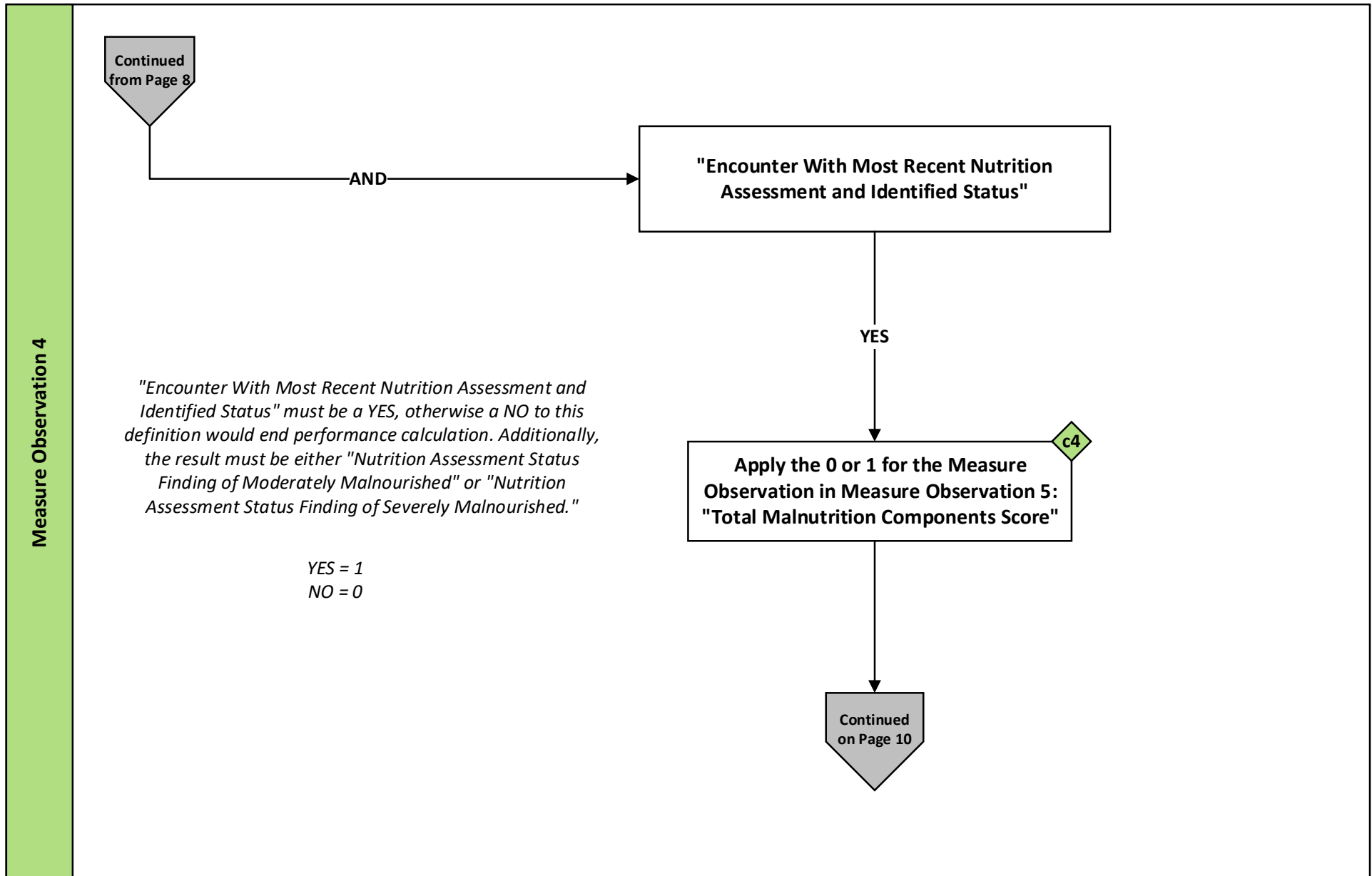
Measure Flow Diagram (Continued)



2026 eCQM Flow – CMS986v5: Malnutrition Care Score* CBE# 3592e

**This flow diagram represents an overview of population criteria requirements. Please refer to the eCQM measure specification for a complete list of definitions, direct reference codes, data or timing elements included in this measure and required for submission.*

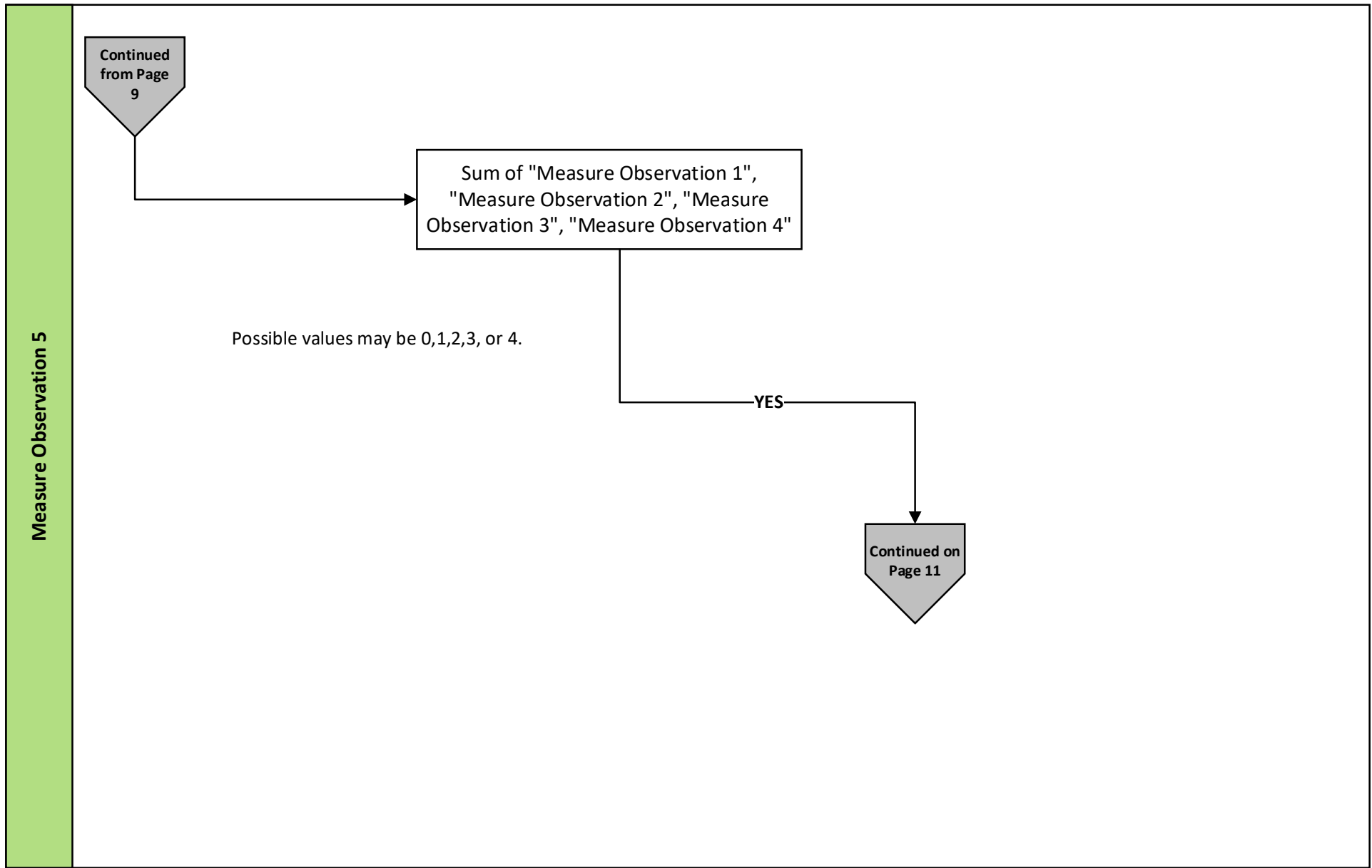
Measure Flow Diagram (Continued)



2026 eCQM Flow – CMS986v5: Malnutrition Care Score* CBE# 3592e

**This flow diagram represents an overview of population criteria requirements. Please refer to the eCQM measure specification for a complete list of definitions, direct reference codes, data or timing elements included in this measure and required for submission.*

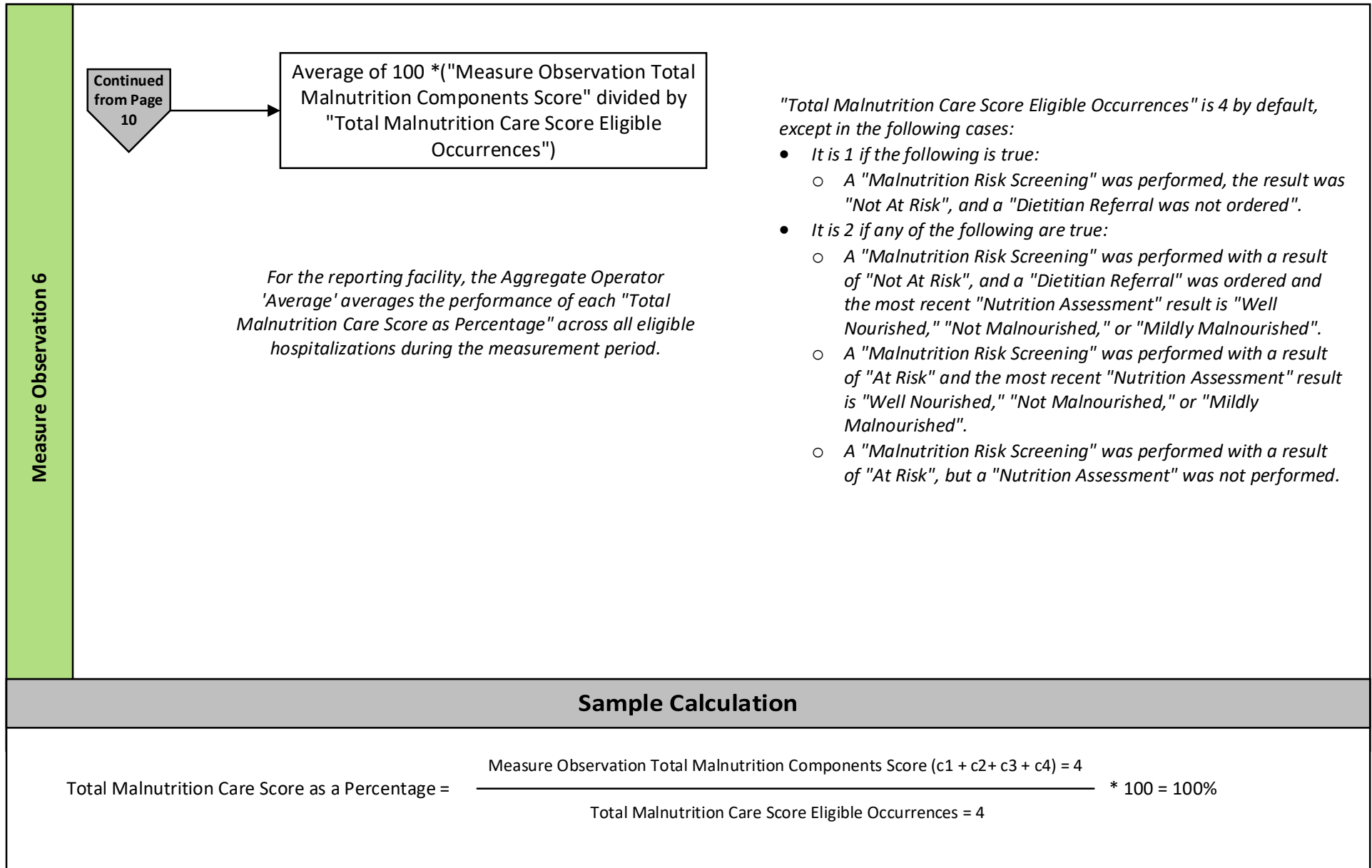
Measure Flow Diagram (Continued)



2026 eCQM Flow – CMS986v5: Malnutrition Care Score* CBE# 3592e

**This flow diagram represents an overview of population criteria requirements. Please refer to the eCQM measure specification for a complete list of definitions, direct reference codes, data or timing elements included in this measure and required for submission.*

Measure Flow Diagram (Continued)



2026 eCQM Flow – CMS986v5: Malnutrition Care Score* CBE# 3592e

**This flow diagram represents an overview of population criteria requirements. Please refer to the eCQM measure specification for a complete list of definitions, direct reference codes, data or timing elements included in this measure and required for submission.*

Measure Flow Narrative

The measure flow diagram on the preceding pages illustrates the steps to determine the population criteria for this measure.

Measure Description	This measure assesses the percentage of eligible encounters for adults aged 18 years and older at the start of the eligible encounter during the measurement period, with a length of stay equal to or greater than 24 hours, who received optimal malnutrition care where care performed was appropriate to the patient's level of malnutrition risk and severity. Malnutrition care best practices recommend that for each eligible encounter, adult inpatients are (1) screened for malnutrition risk or for a dietitian referral to be placed, (2) assessed by a registered dietitian (RD) or registered dietitian nutritionist (RDN) to confirm findings of malnutrition risk, and if identified with a "moderate" or "severe" malnutrition status in the current performed nutrition assessment, (3) receive a "moderate" or "severe" malnutrition diagnosis by a physician or eligible clinician as defined by the Centers for Medicare & Medicaid Services (CMS), and (4) have a current nutrition care plan performed by an RD/RDN.
Initial Population	Start by identifying the initial population criteria defined as eligible encounters during the measurement period with length of stay of 24 hours or more among individuals 18 years of age and older at the start of the inpatient encounter
Measure Population	In a continuous variable measure, this measure construct is called the measure population, rather than the denominator. The measure population is equal to the Initial Population.
Measure Population Exclusions	Encounters with a discharge disposition for hospice care or with a hospice care order during the inpatient qualifying encounter

2026 eCQM Flow – CMS986v5: Malnutrition Care Score* CBE# 3592e

**This flow diagram represents an overview of population criteria requirements. Please refer to the eCQM measure specification for a complete list of definitions, direct reference codes, data or timing elements included in this measure and required for submission.*

Measure Flow Narrative (Continued)

The measure flow diagram on the preceding pages illustrates the steps to determine the population criteria for this measure.

Measure Observations	<p>A continuous variable measure has measure observations, rather than a numerator. There are six (6) measure observations. This measure is constructed of four clinically eligible components aggregated as the arithmetic average of eligible hospitalizations. A single measure population is used to calculate the "Total Malnutrition Components Score" and "Total Malnutrition Care Score as Percentage."</p> <ol style="list-style-type: none">1. Measure Observation 1 is "Encounter with Malnutrition Risk Screening and Identified Result" or "Encounter with Dietitian Referral"2. Measure Observation 2 is "Encounters With Most Recent Nutrition Assessment And Identified Status"3. Measure Observation 3 is "Encounters with Malnutrition Diagnosis"4. Measure Observation 4 is "Encounters with Nutrition Care Plan"5. Population 5 is "Total Malnutrition Components Score" equals the sum of Measure Observation 1, Measure Observation 2, Measure Observation 3, and Measure Observation 46. Population 6 is "Total Malnutrition Care Score as Percentage" equals ("Total Malnutrition Components Score" divided by "Total Malnutrition Care Score Eligible Occurrences") multiplied by 100
----------------------	---