

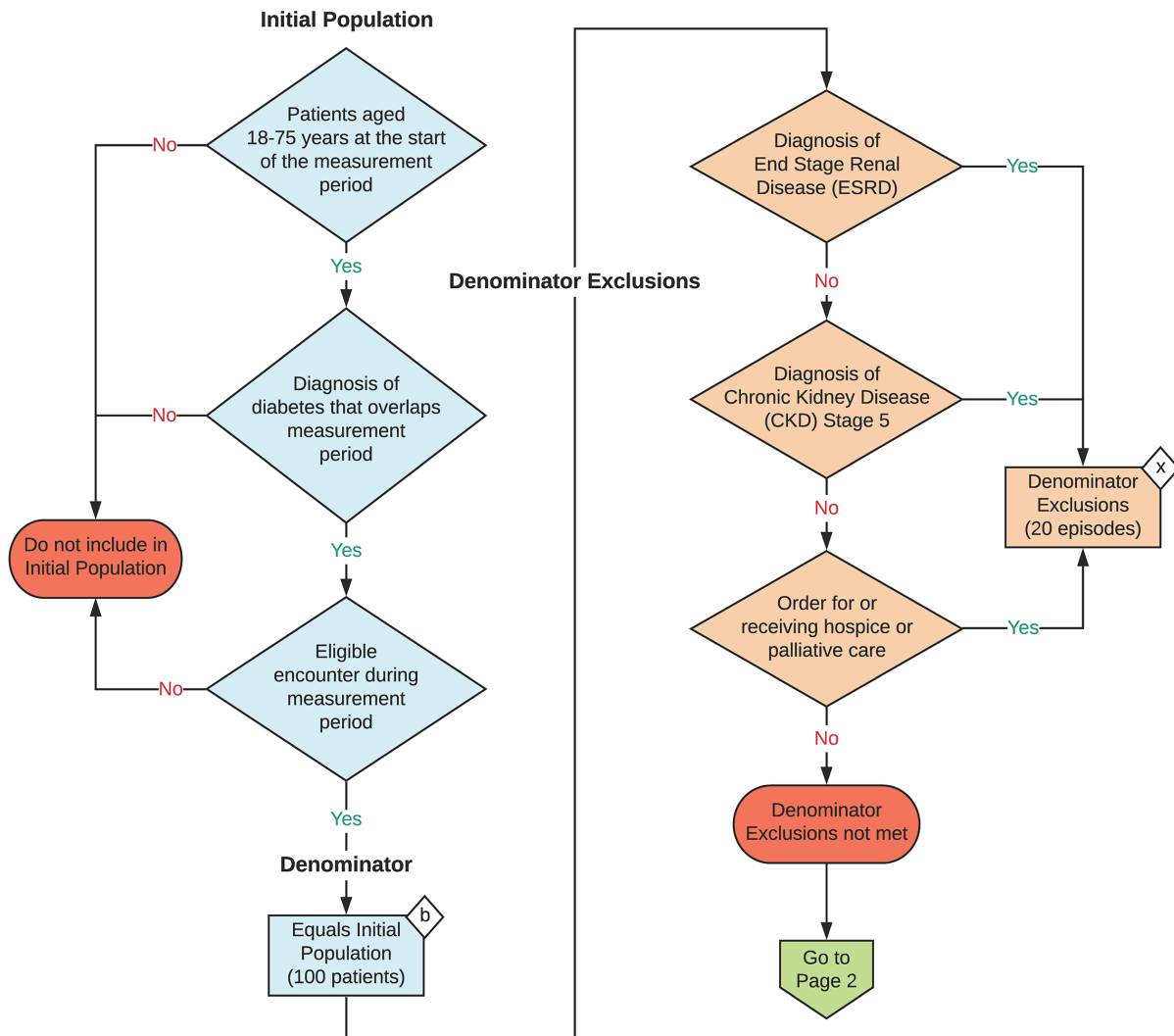
**2023 eCQM Flow**  
**eCQM Identifier: CMS951v1**

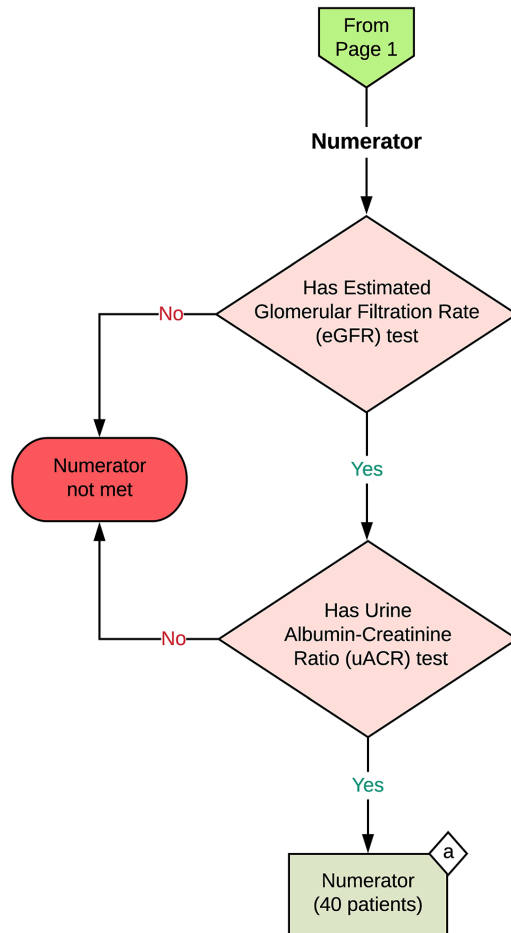
**NOTE:** This flow diagram represents an overview of population criteria requirements. Refer to the eCQM specification for a complete list of data elements included in this measure and required for submission.

**Kidney Health Evaluation**

Percentage of patients aged 18-75 years with a diagnosis of diabetes who received a kidney health evaluation defined by an Estimated Glomerular Filtration Rate (eGFR) AND Urine Albumin-Creatinine Ratio (uACR) within the measurement period

**This eCQM is a patient-based measure**





**Sample Calculation**

**Performance Rate =**

Numerator (a = 40 patients)		
Denominator (b = 100 patients) - Denominator Exclusions (x = 20 patients)	=	$\frac{40}{80} = 50\%$

**eCQM Identifier: CMS951v1**  
**eCQM Title: Kidney Health Evaluation**

**NOTE:** This flow diagram represents an overview of population criteria requirements. Refer to the eCQM specification for a complete list of data elements included in this measure and required for submission.

**Description:** Percentage of patients ages 18-75 years with a diagnosis of diabetes who received a kidney health evaluation defined by an Estimated Glomerular Filtration Rate (eGFR) AND Urine Albumin-Creatinine Ratio (uACR) within the measurement period.

**This eCQM is a patient-based measure.**

**eCQM Flow Narrative**

**Initial Population**

Start by identifying the Initial Population, which includes patients 18 to 75 years of age at the start of the measurement period with an eligible encounter during measurement period and with a diagnosis of diabetes that overlaps the measurement period.

**Denominator**

The Denominator equals the Initial Population. In the sample calculation provided at the end of the eCQM flow, the Denominator is equal to 100 patients.

**Denominator Exclusions**

The Denominator Exclusions criteria identify a subset of the Denominator population by excluding patients who have a diagnosis of End Stage Renal Disease (ESRD) during the measurement period, or a diagnosis of Chronic Kidney Disease (CKD) Stage 5 during the measurement period, or have an order for or are receiving hospice or palliative care during the measurement period. In the sample calculation provided at the end of the eCQM flow, the Denominator Exclusions are equal to 20 patients.

**Numerator**

The Numerator criteria identify a subset of the Denominator population (that did not meet the Denominator Exclusions criteria) by including patients who received a kidney health evaluation defined by an Estimated Glomerular Filtration Rate (eGFR) AND Urine Albumin-Creatinine Ratio (uACR) within the measurement period. In the sample calculation provided at the end of the eCQM flow, the Numerator is equal to 40 patients.

**Sample Calculation**

A sample calculation is provided to help determine how the measure performance rate is derived. The measure performance rate is calculated by dividing the Numerator (total equals 40 patients) by the difference between the Denominator (total equals 100 patients) and the Denominator Exclusions (total equals 20 patients), which is equal to a score of 50 percent.