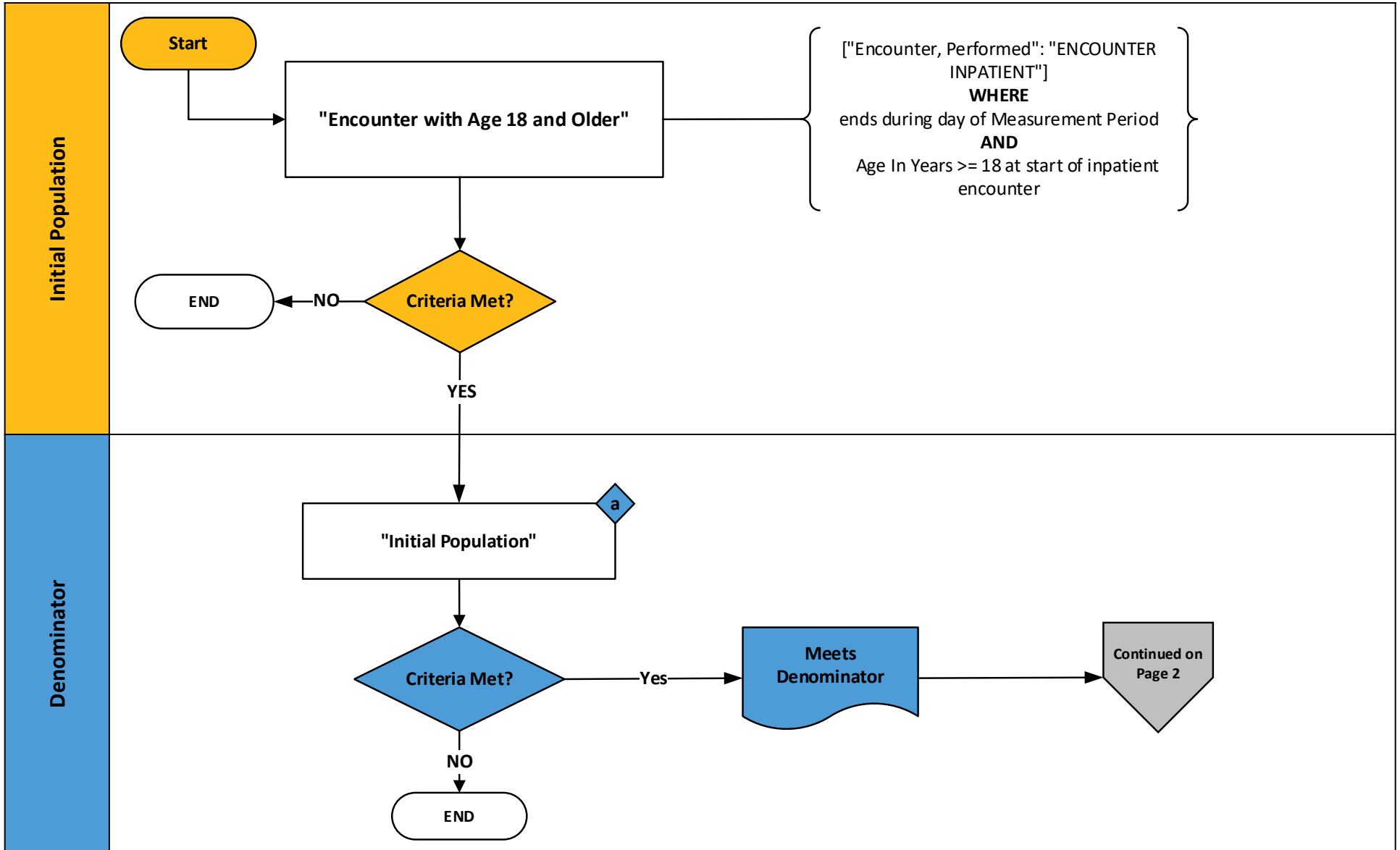


2025 eCQM Flow – CMS826v2: Hospital Harm – Pressure Injury (HH-PI)* CBE# 3498e

*This flow diagram represents an overview of population criteria requirements. Please refer to the eCQM measure specification for a complete list of definitions, direct reference codes, data or timing elements included in this measure and required for submission.

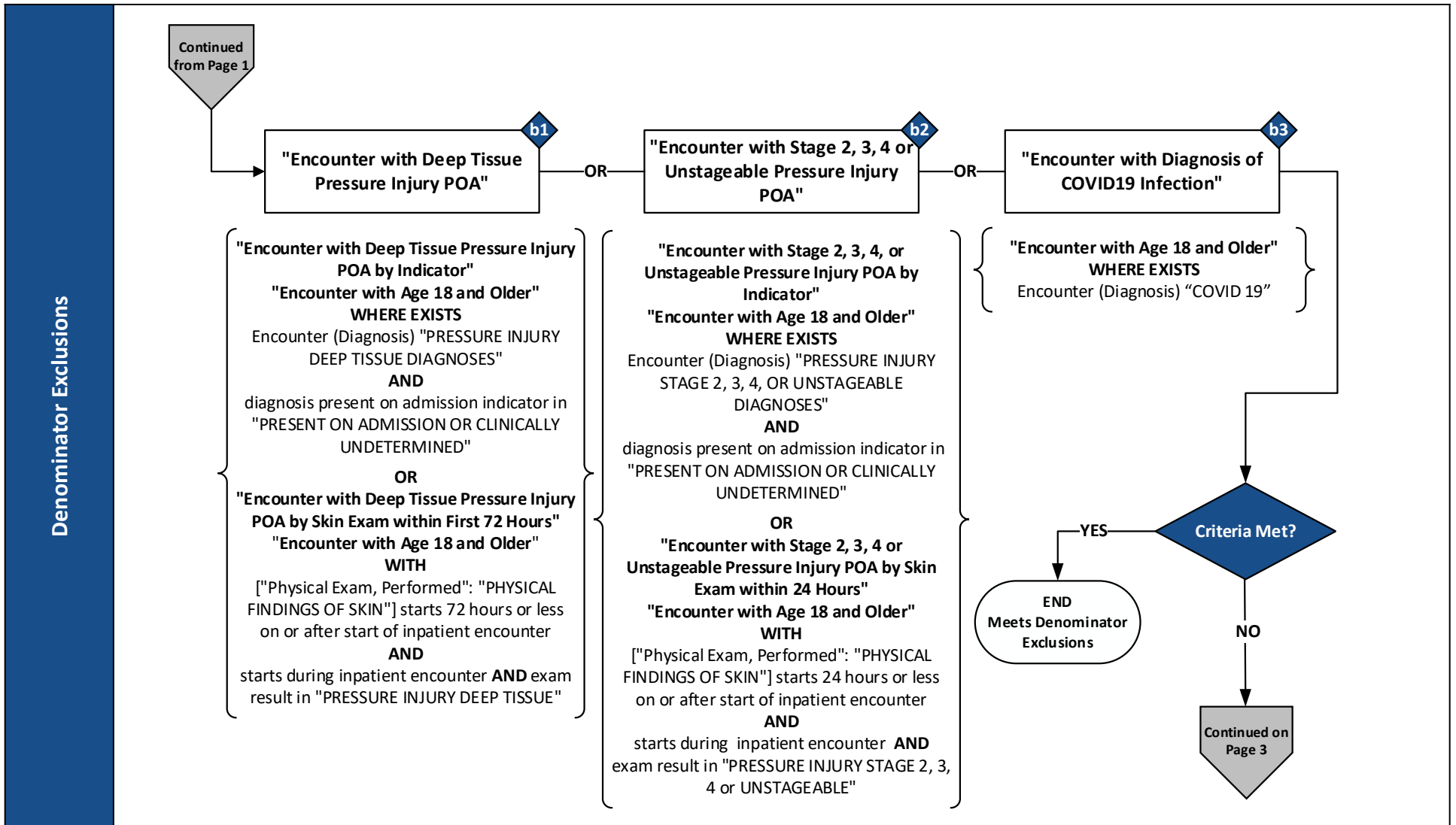
Measure Flow Diagram



2025 eCQM Flow – CMS826v2: Hospital Harm – Pressure Injury (HH-PI)* CBE# 3498e

*This flow diagram represents an overview of population criteria requirements. Please refer to the eCQM measure specification for a complete list of definitions, direct reference codes, data or timing elements included in this measure and required for submission.

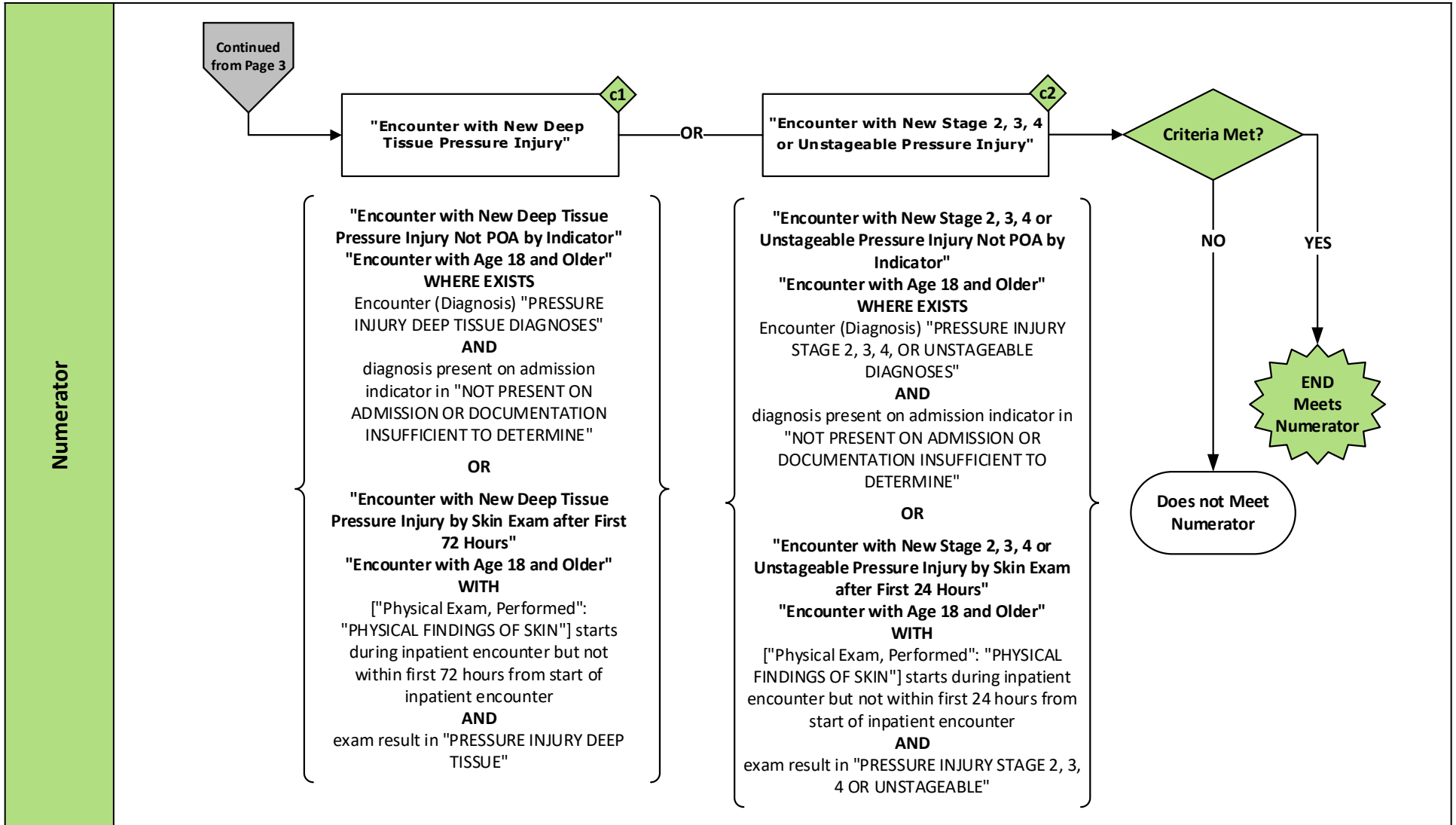
Measure Flow Diagram (Continued)



2025 eCQM Flow – CMS826v2: Hospital Harm – Pressure Injury (HH-PI)* CBE# 3498e

*This flow diagram represents an overview of population criteria requirements. Please refer to the eCQM measure specification for a complete list of definitions, direct reference codes, data or timing elements included in this measure and required for submission.

Measure Flow Diagram (Continued)



2025 eCQM Flow – CMS826v2: Hospital Harm – Pressure Injury (HH-PI)* CBE# 3498e

**This flow diagram represents an overview of population criteria requirements. Please refer to the eCQM measure specification for a complete list of definitions, direct reference codes, data or timing elements included in this measure and required for submission.*

Measure Flow Diagram (Continued)

Sample Calculation

$$\text{Performance Rate} = \frac{\text{Numerator (c1 + c2 = 60)}}{\text{Denominator (a = 100) – Denominator Exclusions (b1 + b2 + b3 = 20)}} = 75\%$$

2025 eCQM Flow – CMS826v2: Hospital Harm – Pressure Injury (HH-PI)* CBE# 3498e

**This flow diagram represents an overview of population criteria requirements. Please refer to the eCQM measure specification for a complete list of definitions, direct reference codes, data or timing elements included in this measure and required for submission.*

Measure Flow Narrative

The measure flow diagram on the preceding pages illustrates the steps to determine the population criteria for this measure.

Measure Description	The measure assesses the number of inpatient hospitalizations for patients aged 18 and older who suffer the harm of developing a new stage 2, stage 3, stage 4, deep tissue, or unstageable pressure injury
Initial Population	Start by identifying the initial population criteria as inpatient hospitalizations for patients aged 18 and older
Denominator	The denominator equals the initial population
Denominator Exclusions	<p>The denominator exclusions criteria identify a subset of the denominator population by excluding inpatient hospitalizations for patients with any of the following:</p> <ul style="list-style-type: none"> • A deep tissue pressure injury (DTPI) or stage 2, 3, 4 or unstageable pressure injury diagnosis present on admission, i.e., the diagnosis of pressure injury has a Present on Admission indicator = Y yes (Diagnosis was present at time of inpatient admission) or W (clinically undetermined) • A DTPI found on exam 72 hours or less after the start of the encounter • A stage 2, 3, 4, or unstageable pressure injury found on exam 24 hours or less after the start of the encounter • A diagnosis of a COVID-19 infection during the encounter

2025 eCQM Flow – CMS826v2: Hospital Harm – Pressure Injury (HH-PI)* CBE# 3498e

**This flow diagram represents an overview of population criteria requirements. Please refer to the eCQM measure specification for a complete list of definitions, direct reference codes, data or timing elements included in this measure and required for submission.*

Measure Flow Narrative (Continued)

The measure flow diagram on the preceding pages illustrates the steps to determine the population criteria for this measure.

Numerator	<p>The numerator criteria identify a subset of the denominator population by including inpatient hospitalizations for patients with a new DTPI or stage 2, 3, 4, or unstageable pressure injury, as evidenced by any of the following:</p> <ul style="list-style-type: none">• A diagnosis of DTPI with the DTPI not present on admission, i.e., the diagnosis of DTPI has a Present on Admission indicator = N (Diagnosis was not present at time of inpatient admission) or U (documentation insufficient to determine if the condition was present at the time of inpatient admission)• A diagnosis of stage 2, 3, 4 or unstageable pressure injury with the pressure injury diagnosis not present on admission, i.e., the diagnosis of pressure injury has a Present on Admission indicator = N (Diagnosis was not present at time of inpatient admission) or U (documentation insufficient to determine if the condition was present at the time of inpatient admission)• A DTPI found on exam greater than 72 hours after the start of the encounter• A stage 2, 3, 4 or unstageable pressure injury found on exam greater than 24 hours after the start of the encounter
------------------	--