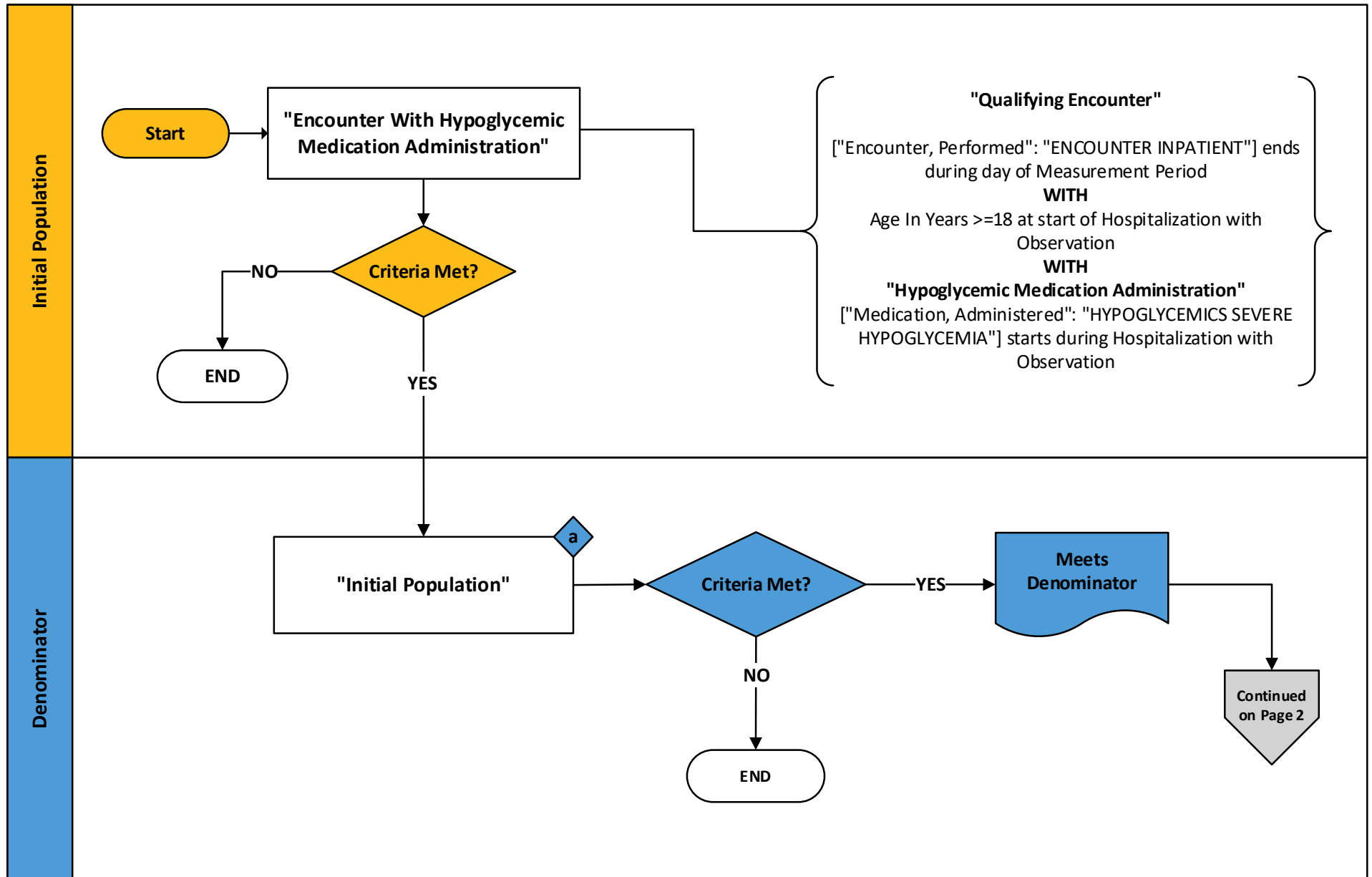


2023 eCQM Flow – CMS816v2: Hospital Harm - Severe Hypoglycemia (HH-01)* NQF# 3503e

*This flow diagram represents an overview of population criteria requirements. Please refer to the eCQM measure specification for a complete list of definitions, direct reference codes, data or timing elements included in this measure and required for submission.

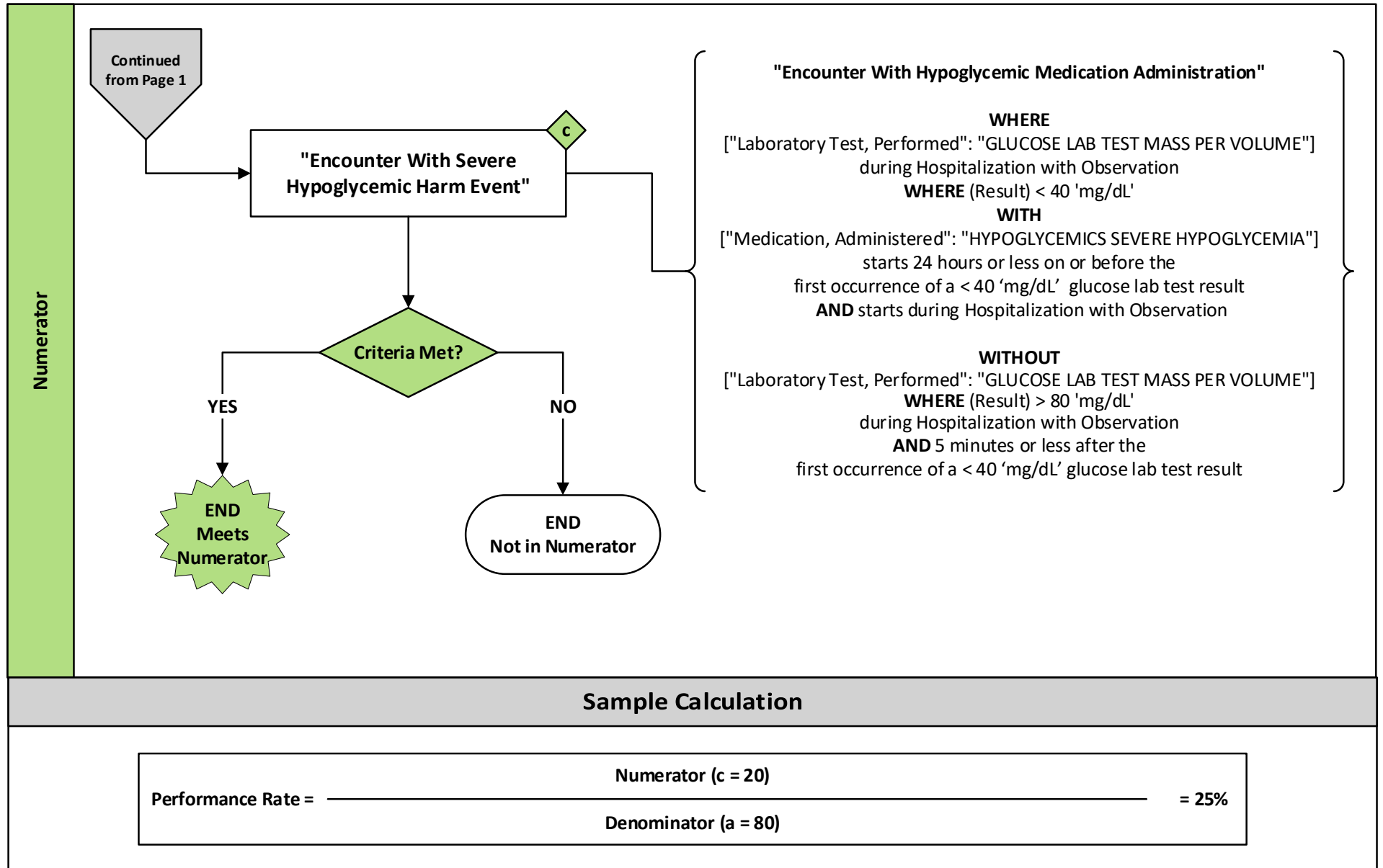
Measure Flow Diagram



2023 eCQM Flow – CMS816v2: Hospital Harm - Severe Hypoglycemia (HH-01)* NQF# 3503e

*This flow diagram represents an overview of population criteria requirements. Please refer to the eCQM measure specification for a complete list of definitions, direct reference codes, data or timing elements included in this measure and required for submission.

Measure Flow Diagram (Continued)



2023 eCQM Flow – CMS816v2: Hospital Harm - Severe Hypoglycemia (HH-01)* NQF# 3503e

**This flow diagram represents an overview of population criteria requirements. Please refer to the eCQM measure specification for a complete list of definitions, direct reference codes, data or timing elements included in this measure and required for submission.*

Measure Flow Narrative

The measure flow diagram on the preceding pages illustrates the steps to determine the population criteria for this measure.

Measure Description	This measure assesses the percentage of inpatient hospitalizations for patients 18 years of age or older at admission, who were administered at least one hypoglycemic medication during the encounter, who suffer the harm of a severe hypoglycemic event during the encounter
Initial Population	Start by identifying the initial population criteria as inpatient hospitalizations where the patient is 18 years of age or older at the start of the encounter, and at least one hypoglycemic medication was administered during the encounter. The measure includes instances of administration of hypoglycemic medications in the emergency department or in observation status at the start of an inpatient hospitalization when assessing inclusion of encounters in the measure denominator.
Denominator	The denominator criteria is equal to the initial population

2023 eCQM Flow – CMS816v2: Hospital Harm - Severe Hypoglycemia (HH-01)* NQF# 3503e

**This flow diagram represents an overview of population criteria requirements. Please refer to the eCQM measure specification for a complete list of definitions, direct reference codes, data or timing elements included in this measure and required for submission.*

Measure Flow Narrative (Continued)

The measure flow diagram on the preceding pages illustrates the steps to determine the population criteria for this measure.

Numerator	<p>The numerator criteria identify a subset of the denominator population by including inpatient hospitalizations where a severe hypoglycemic event occurred during the encounter, which is:</p> <ol style="list-style-type: none">1. A blood glucose result less than 40 mg/dL <p>AND</p> <ol style="list-style-type: none">2. A hypoglycemic medication administered within 24 hours prior to the start of the severe hypoglycemic event (i.e., the glucose result less than 40 mg/dL) <p>AND</p> <ol style="list-style-type: none">3. No subsequent repeat test for blood glucose with a result greater than 80 mg/dL within five minutes of the start of the initial blood glucose test with result less than 40 mg/dL <p>Only the first qualifying severe hypoglycemic event is counted in the numerator, and only one severe hypoglycemic event is counted per encounter. The 24-hour and 5-minute timeframes are based on the time the blood glucose was drawn, as this reflects the time the patient was experiencing that specific blood glucose level.</p>
------------------	--