

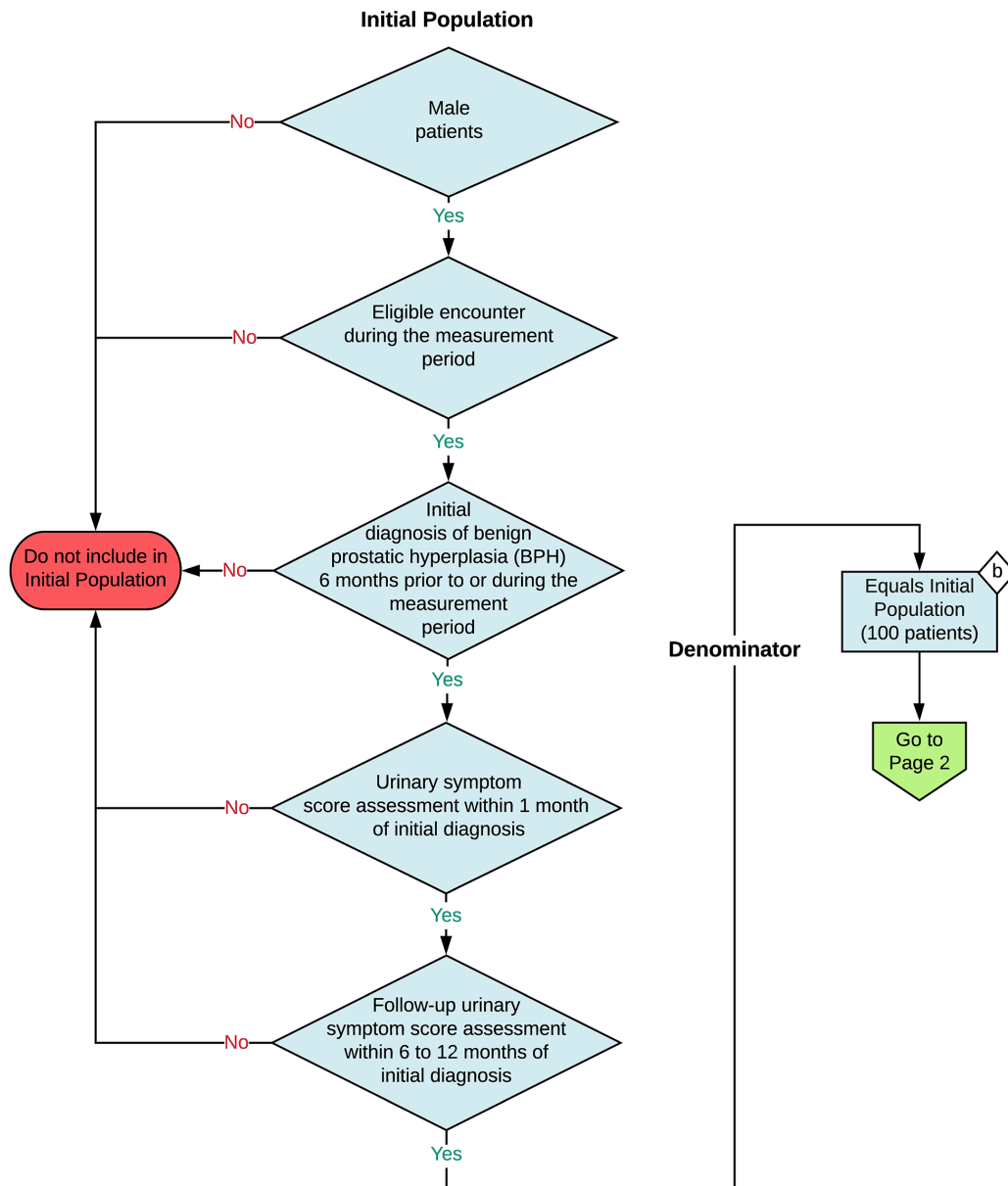
**2023 eCQM Flow**  
**eCQM Identifier: CMS771v4**

**NOTE:** This flow diagram represents an overview of population criteria requirements. **Refer to the eCQM specification for a complete list of data elements included in this measure and required for submission.**

**Urinary Symptom Score Change 6-12 Months After Diagnosis of Benign Prostatic Hyperplasia**

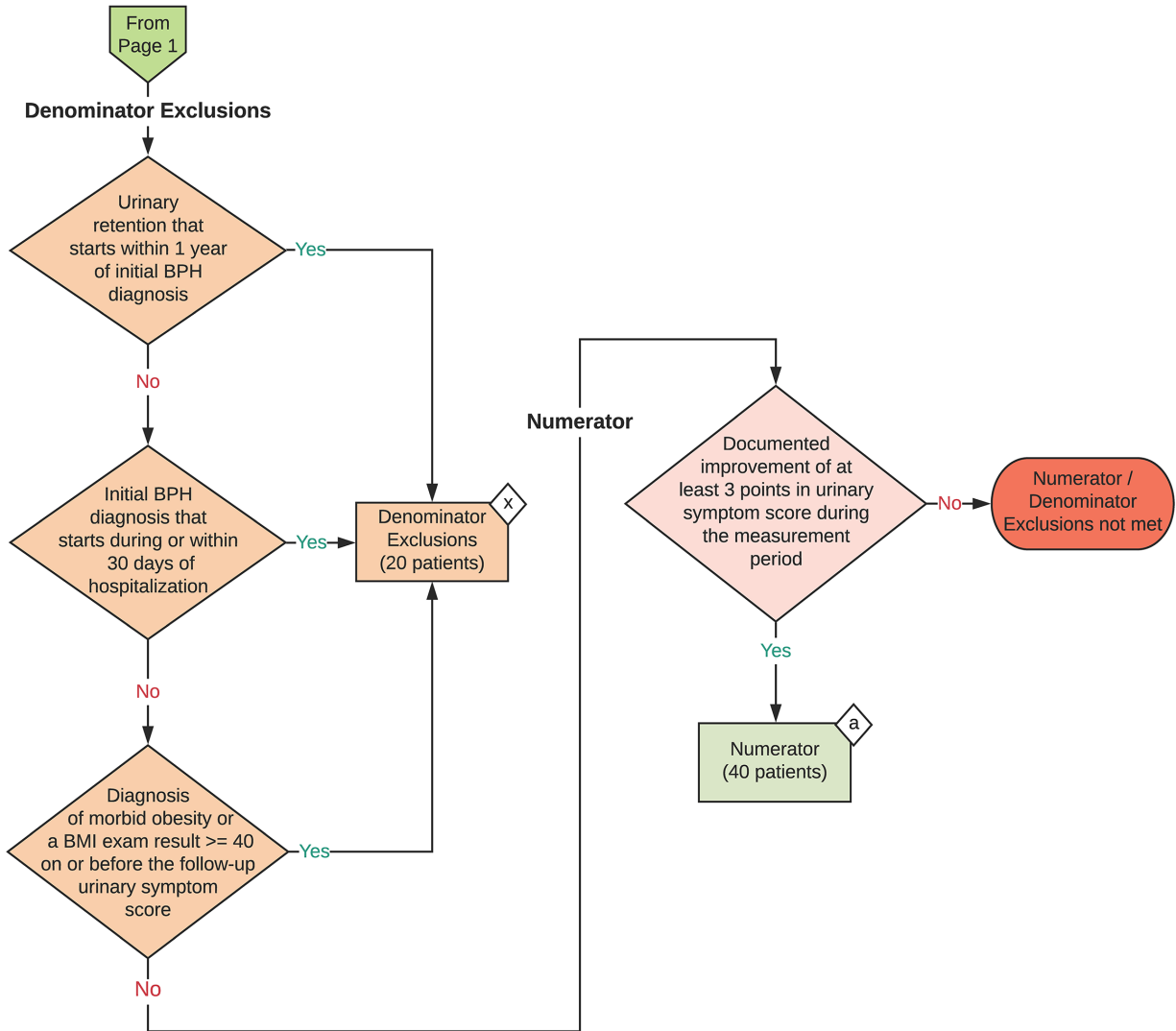
Percentage of patients with an office visit within the measurement period and with a new diagnosis of clinically significant Benign Prostatic Hyperplasia who have International Prostate Symptoms Score (IPSS) or American Urological Association (AUA) Symptom Index (SI) documented at time of diagnosis and again 6-12 months later with an improvement of 3 points

**This eCQM is a patient-based measure**



2023 eCQM Flow  
eCQM Identifier: CMS771v4

Urinary Symptom Score Change 6-12 Months After  
Diagnosis of Benign Prostatic Hyperplasia



**Sample Calculation**

**Performance Rate =**

Numerator (a = 40 patients)	=	$\frac{40}{80}$	=	50 %
Denominator (b = 100 patients) - Denominator Exclusions (x = 20 patients)				

**eCQM Identifier: CMS771v4****eCQM Title: Urinary Symptom Score Change 6-12 Months After Diagnosis of Benign Prostate Hyperplasia**

**NOTE:** This flow diagram represents an overview of population criteria requirements. Refer to the eCQM specification for a complete list of data elements included in this measure and required for submission

**Description:** Percentage of patients with an office visit within the measurement period and with a new diagnosis of clinically significant Benign Prostatic Hyperplasia who have International Prostate Symptoms Score (IPSS) or American Urological Association (AUA) Symptom Index (SI) documented at time of diagnosis and again 6 to 12 months later with an improvement of 3 points.

**This eCQM is a patient-based measure.**

**eCQM Flow Narrative****Initial Population**

Start by identifying the Initial Population, which includes male patients who had an eligible encounter during the measurement period, with an initial diagnosis of benign prostatic hyperplasia (BPH) 6 months prior to or during the measurement period, a urinary symptom score assessment within 1 month of initial diagnosis, and a follow-up urinary symptom score assessment within 6 to 12 months of initial diagnosis.

**Denominator**

The Denominator equals the Initial Population. In the sample calculation provided at the end of the eCQM flow, the Denominator is equal to 100 patients.

**Denominator Exclusions**

The Denominator Exclusions criteria identify a subset of the Denominator population by excluding patients with urinary retention that starts within 1 year of initial BPH diagnosis, patients with an initial BPH diagnosis that starts during or within 30 days of hospitalization, and patients with a diagnosis of morbid obesity or with a body mass index exam result greater than or equal to 40 before the follow-up urinary symptom score. In the sample calculation provided at the end of the eCQM flow, the Denominator Exclusions are equal to 20 patients.

**Numerator**

The Numerator criteria identify a subset of the Denominator population (that did not meet the Denominator Exclusions criteria) by including patients with a documented improvement of at least 3 points in their urinary symptom score during the measurement period. In the sample calculation provided at the end of the eCQM flow, the Numerator is equal to 40 patients.

**Sample Calculation**

A sample calculation is provided to help determine how the measure performance rate is derived. The measure performance rate is calculated by dividing the Numerator (total equals 40 patients) by the difference between the Denominator (total equals 100 patients) and the Denominator Exclusions (total equals 20 patients), which is equal to a score of 50 percent.