

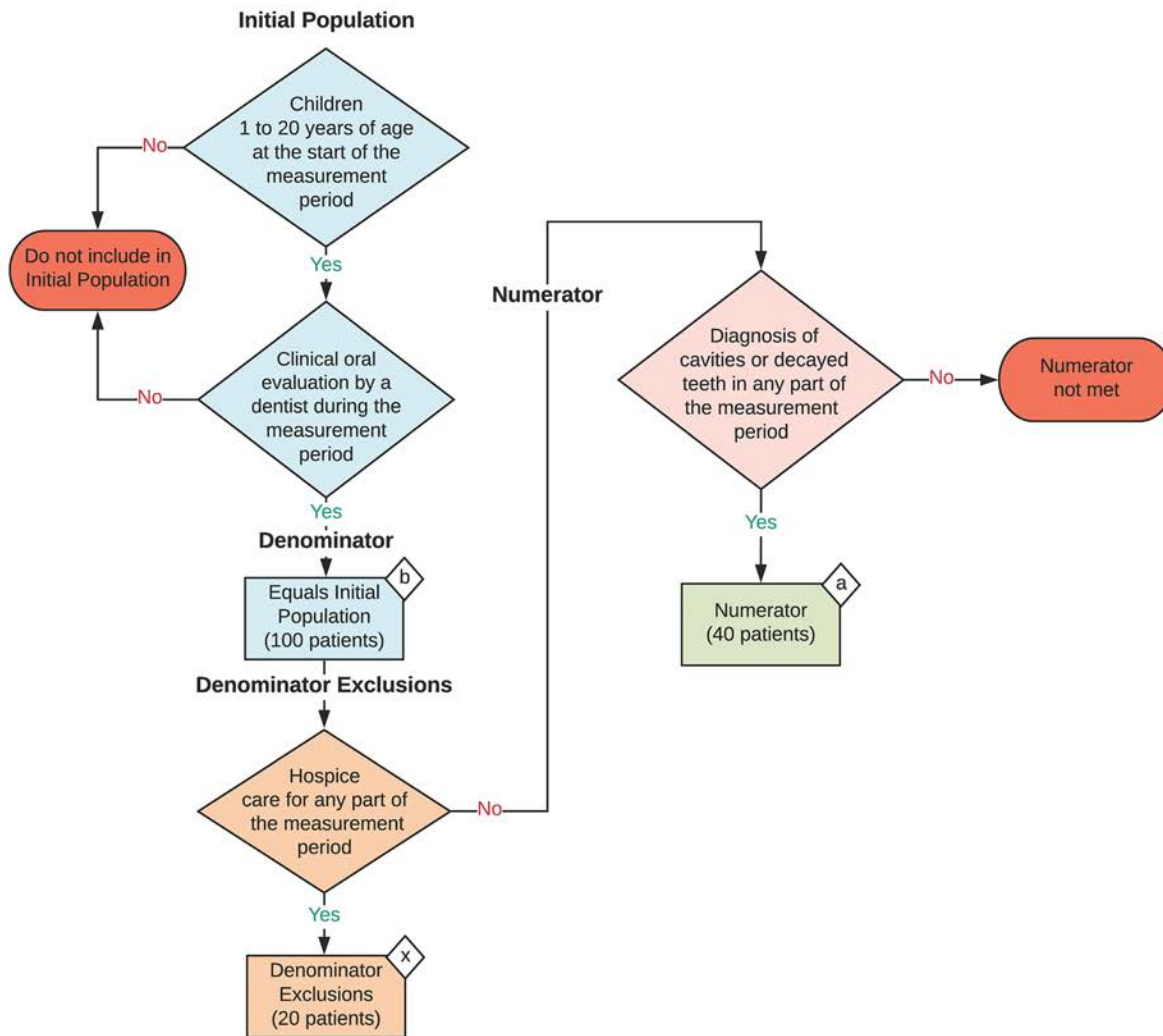
**2025 eCQM Flow**  
**eCQM Identifier: CMS75v13**

**NOTE:** This flow diagram represents an overview of population criteria requirements. Refer to the eCQM specification for a complete list of data elements included in this measure and required for submission.

**Children Who Have Dental Decay or Cavities**

Percentage of children, 1-20 years of age at the start of the measurement period, who have had dental decay or cavities during the measurement period as determined by a dentist

This eCQM is a patient-based measure



**Sample Calculation**

**Performance Rate\*\* =**

$$\frac{\text{Numerator (a = 40 patients)}}{\text{Denominator (b = 100 patients) - Denominator Exclusions (x = 20 patients)}} = \frac{40}{80} = 50\%$$

**\*\*A lower score indicates better quality**

**eCQM Identifier: CMS75v13****eCQM Title: Children Who Have Dental Decay or Cavities**

**NOTE:** This flow diagram represents an overview of population criteria requirements. Refer to the eCQM specification for a complete list of data elements included in this measure and required for submission.

**Description:** Percentage of children, age 1 to 20 years at the start of the measurement period, who have had dental decay or cavities during the measurement period as determined by a dentist.

**This eCQM is a patient-based measure.**

**eCQM Flow Narrative****Initial Population**

Start by identifying the Initial Population, which includes children 1 to 20 years of age at the start of the measurement period with a clinical oral evaluation by a dentist during the measurement period.

**Denominator**

The Denominator equals the Initial Population. In the sample calculation provided at the end of the eCQM flow, the Denominator is equal to 100 patients.

**Denominator Exclusions**

The Denominator Exclusions criteria identify a subset of the Denominator population by excluding patients who are in hospice care for any part of the measurement period. In the sample calculation provided at the end of the eCQM flow, the Denominator Exclusions are equal to 20 patients.

**Numerator**

The Numerator criteria identify a subset of the Denominator population (that did not meet the Denominator Exclusions criteria) by including children who have a diagnosis of cavities or decayed teeth in any part of the measurement period. In the sample calculation provided at the end of the eCQM flow, the Numerator is equal to 40 patients.

**Sample Calculation**

A sample calculation is provided to help determine how the measure performance rate is derived. The measure performance rate is calculated by dividing the Numerator (total equals 40 patients) by the difference between the Denominator (total equals 100 patients) and the Denominator Exclusions (total equals 20 patients), which is equal to a score of 50 percent.