

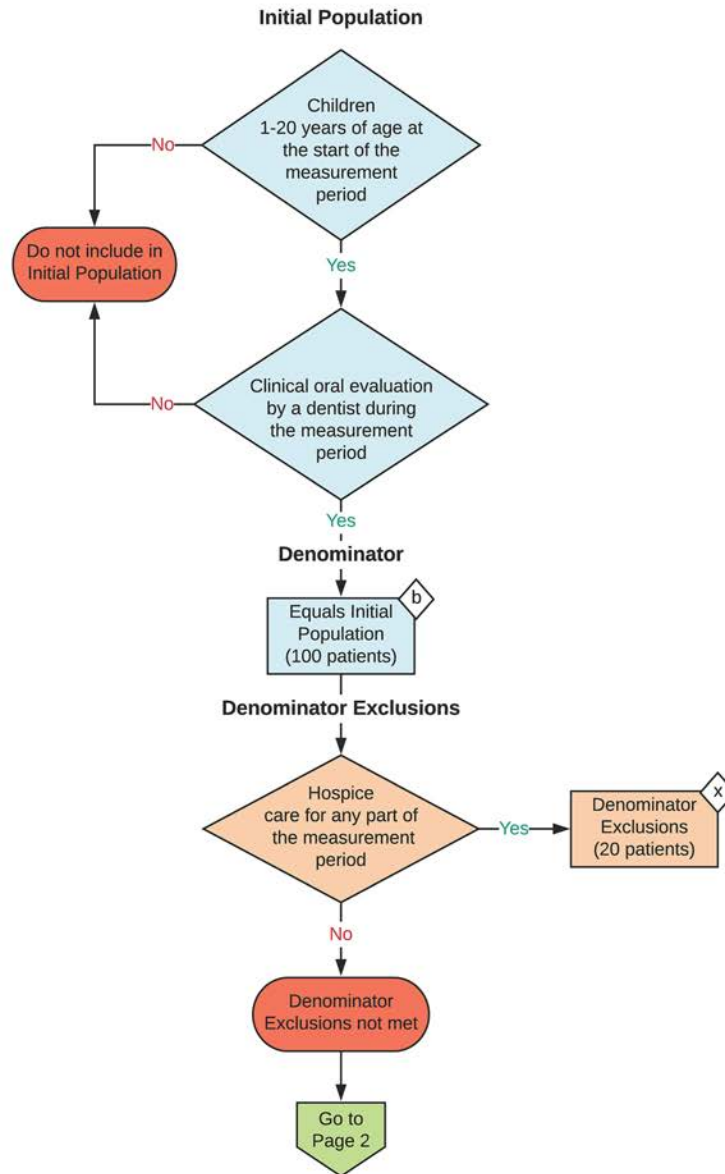
2025 eQIM Flow
eQIM Identifier: CMS74v14

NOTE: This flow diagram represents an overview of population criteria requirements. Refer to the eQIM specification for a complete list of data elements included in this measure and required for submission.

Primary Caries Prevention Intervention as Offered by Dentists

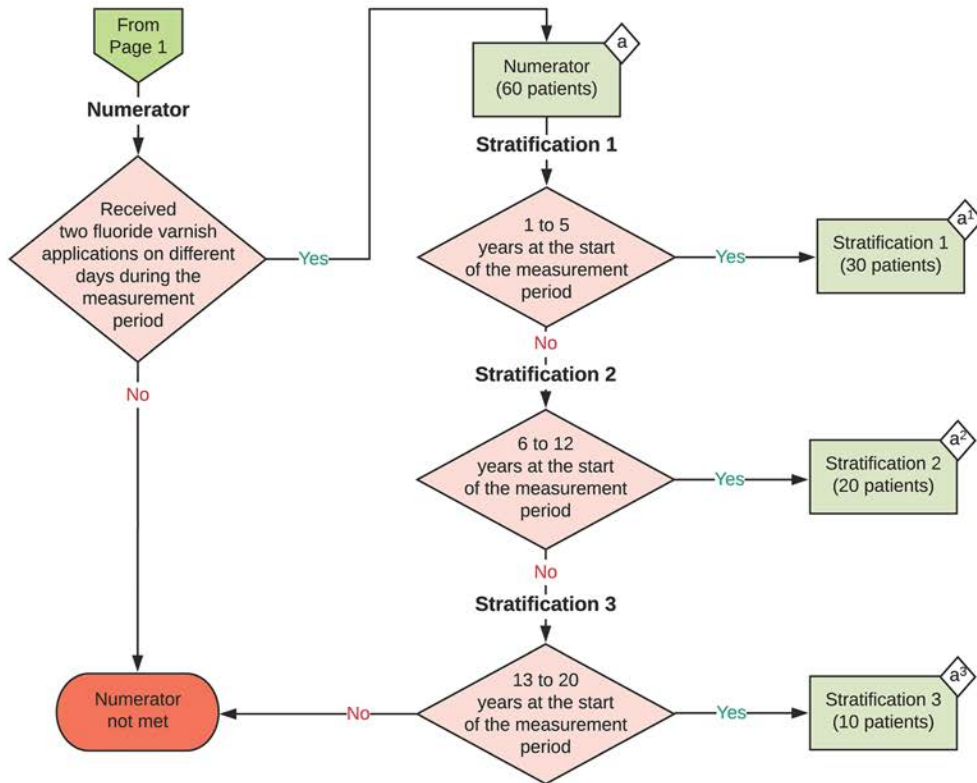
Percentage of children, 1-20 years of age, who received two fluoride varnish applications during the measurement period as determined by a dentist

This eQIM is a patient-based measure



2025 eQOM Flow
eQOM Identifier: CMS74v14

Primary Caries Prevention Intervention as Offered
by Dentists



Sample Calculation

Performance Rate =

$$\frac{\text{Numerator (a = 60 patients)}}{\text{Denominator (b = 100 patients) - Denominator Exclusions (x = 20 patients)}} = \frac{60}{80} = 75\%$$

Stratification 1 =

$$\frac{\text{Numerator (a}^1\text{ = 30 patients)}}{\text{Denominator (b = 100 patients) - Denominator Exclusions (x = 20 patients)}} = \frac{30}{80} = 38\%$$

Stratification 2 =

$$\frac{\text{Numerator (a}^2\text{ = 20 patients)}}{\text{Denominator (b = 100 patients) - Denominator Exclusions (x = 20 patients)}} = \frac{20}{80} = 25\%$$

Stratification 3 =

$$\frac{\text{Numerator (a}^3\text{ = 10 patients)}}{\text{Denominator (b = 100 patients) - Denominator Exclusions (x = 20 patients)}} = \frac{10}{80} = 13\%$$

eCQM Identifier: CMS74v14**eCQM Title: Primary Caries Prevention Intervention as Offered by Dentists**

NOTE: This flow diagram represents an overview of population criteria requirements. Refer to the eCQM specification for a complete list of data elements included in this measure and required for submission.

Description: Percentage of children, 1 to 20 years of age, who received two fluoride varnish applications during the measurement period as determined by a dentist.

This eCQM is a patient-based measure.

eCQM Flow Narrative**Initial Population**

Start by identifying the Initial Population, which includes children 1 to 20 years of age at the start of the measurement period with a clinical oral evaluation by a dentist during the measurement period.

Denominator

The Denominator equals the Initial Population. In the sample calculation provided at the end of the eCQM flow, the Denominator is equal to 100 patients.

Denominator Exclusions

The Denominator Exclusions criteria identify a subset of the Denominator population by excluding patients who are in hospice care for any part of the measurement period. In the sample calculation provided at the end of the eCQM flow, the Denominator Exclusions are equal to 20 patients.

Numerator

The Numerator criteria identify a subset of the Denominator population (that did not meet the Denominator Exclusions criteria) by including patients who received two fluoride varnish applications on different days during the measurement period. In the sample calculation provided at the end of the eCQM flow, the Numerator is equal to 60 patients.

Stratification 1

There are three strata for reporting separately by age group. Stratification 1 includes patients 1 to 5 years of age at the start of the measurement period. In the sample calculation provided at the end of the eCQM flow, Stratification 1 is equal to 30 patients.

Stratification 2

There are three strata for reporting separately by age group. Stratification 2 includes patients 6 to 12 years of age at the start of the measurement period. In the sample calculation provided at the end of the eCQM flow, Stratification 2 is equal to 20 patients.

Stratification 3

There are three strata for reporting separately by age group. Stratification 3 includes patients 13 to 20 years of age at the start of the measurement period. In the sample calculation provided at the end of the eCQM flow, Stratification 3 is equal to 10 patients.

Sample Calculation

A sample calculation is provided to help determine how the measure performance rate is derived. The measure performance rate is calculated by dividing the Numerator (total equals 60 patients) by the difference between the Denominator (total equals 100 patients) and the Denominator Exclusions (total equals 20 patients), which is equal to a score of 75 percent. Stratification 1 is calculated by dividing the Numerator of Stratification 1 (total equals 30 patients) by the difference between the Denominator (total equals 100 patients) and the Denominator Exclusions (total equals 20 patients), which is equal to a score of 38 percent. Stratification 2 is calculated by dividing the Numerator of Stratification 2 (total equals 20 patients) by the difference between the Denominator (total equals 100 patients) and the Denominator Exclusions (total equals 20 patients), which is equal to a score of 25 percent. Stratification 3 is calculated by dividing the Numerator of Stratification 3 (total equals 10 patients) by the difference between the Denominator (total equals 100 patients) and the Denominator Exclusions (total equals 20 patients), which is equal to a score of 13 percent.