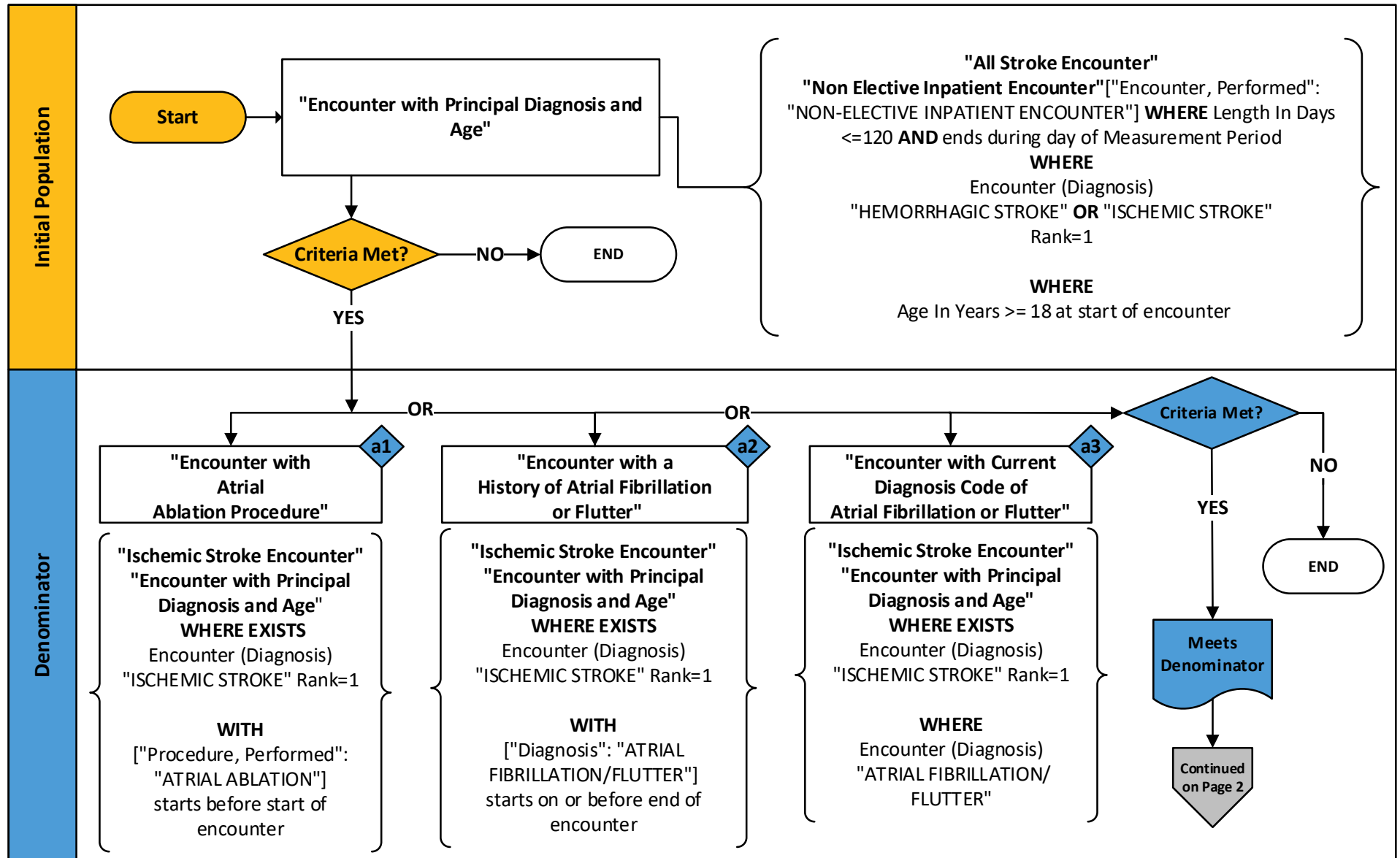


# 2023 eCQM Flow – CMS71v12: Anticoagulation Therapy for Atrial Fibrillation/Flutter (STK-03)\*

\*This flow diagram represents an overview of population criteria requirements. Please refer to the eCQM measure specification for a complete list of definitions, direct reference codes, data or timing elements included in this measure and required for submission.

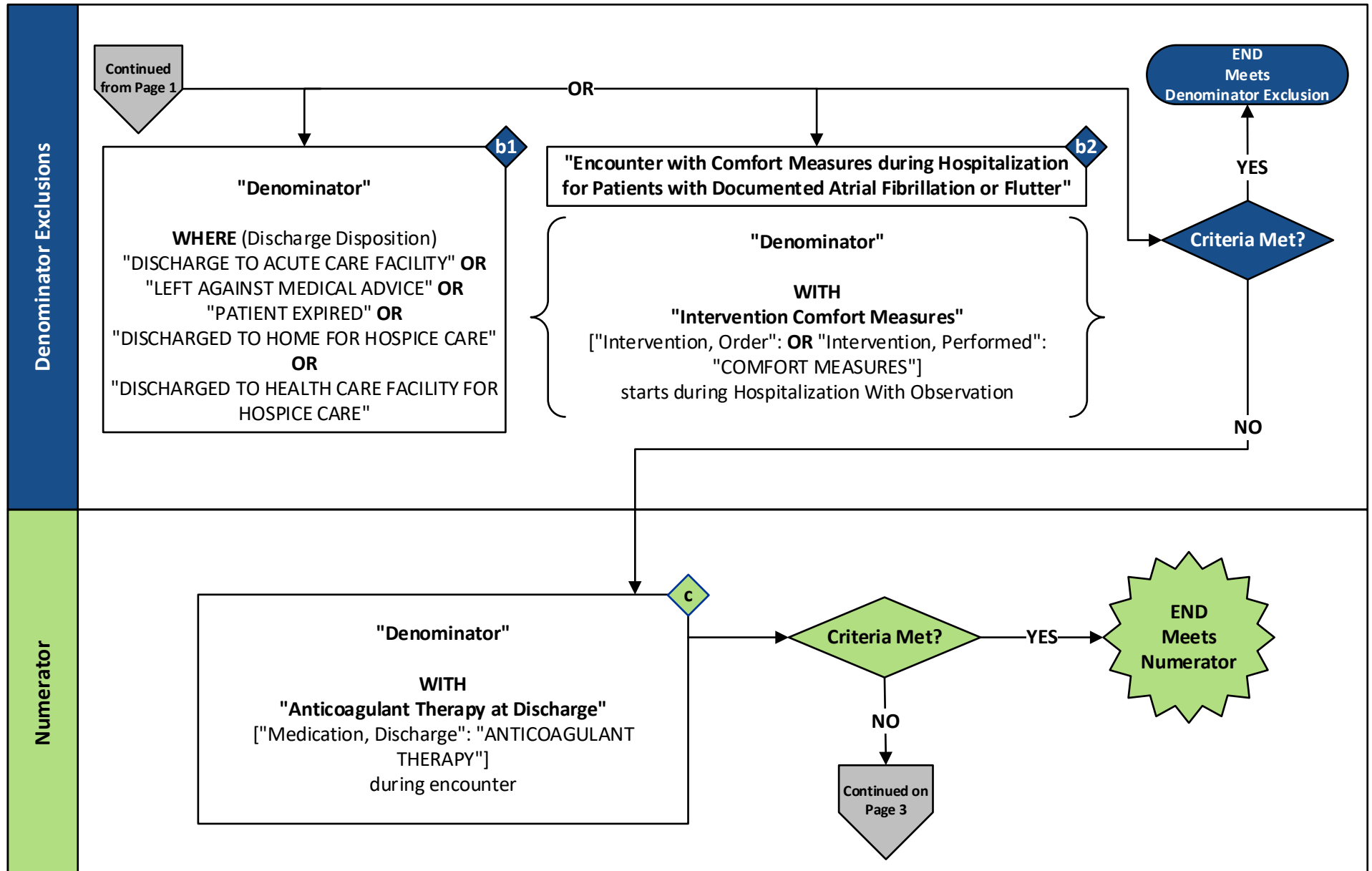
## Measure Flow Diagram



# 2023 eCQM Flow – CMS71v12: Anticoagulation Therapy for Atrial Fibrillation/Flutter (STK-03)\*

\*This flow diagram represents an overview of population criteria requirements. Please refer to the eCQM measure specification for a complete list of definitions, direct reference codes, data or timing elements included in this measure and required for submission.

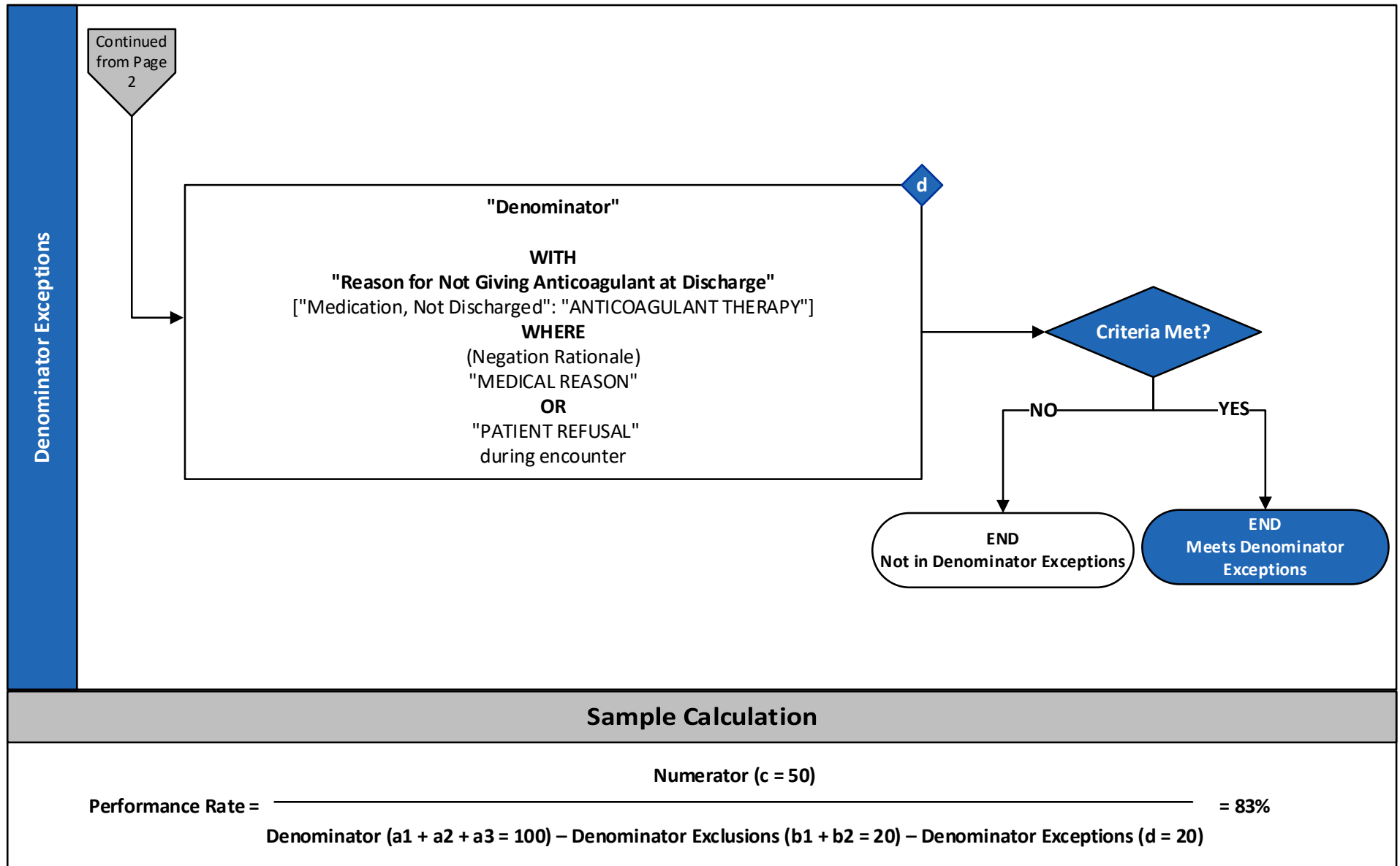
## Measure Flow Diagram (Continued)



# 2023 eCQM Flow – CMS71v12: Anticoagulation Therapy for Atrial Fibrillation/Flutter (STK-03)\*

\*This flow diagram represents an overview of population criteria requirements. Please refer to the eCQM measure specification for a complete list of definitions, direct reference codes, data or timing elements included in this measure and required for submission.

## Measure Flow Diagram (Continued)



## 2023 eCQM Flow – CMS71v12: Anticoagulation Therapy for Atrial Fibrillation/Flutter (STK-03)\*

*\*This flow diagram represents an overview of population criteria requirements. Please refer to the eCQM measure specification for a complete list of definitions, direct reference codes, data or timing elements included in this measure and required for submission.*

### Measure Flow Narrative

The measure flow diagram on the preceding pages illustrates the steps to determine the population criteria for this measure.

<b>Measure Description</b>	This measure assesses ischemic stroke patients with atrial fibrillation/flutter who are prescribed or continuing to take anticoagulation therapy at hospital discharge
<b>Initial Population</b>	<p>Start by identifying the initial population criteria as inpatient hospitalizations with:</p> <ul style="list-style-type: none"> <li>• patients age 18 and older</li> <li>• discharged from inpatient care (non-elective admissions)</li> <li>• a principal diagnosis of ischemic or hemorrhagic stroke</li> <li>• a length of stay less than or equal to 120 days that ends during the measurement period</li> </ul>
<b>Denominator</b>	<p>The denominator criteria further constrains the initial population by inpatient hospitalizations for patients:</p> <ul style="list-style-type: none"> <li>• with a principal diagnosis of ischemic stroke</li> <li>• who have one of the following: <ul style="list-style-type: none"> <li>• a history of atrial ablation</li> <li>• a current diagnosis of atrial fibrillation/flutter</li> <li>• a history of atrial fibrillation/flutter</li> </ul> </li> </ul>
<b>Denominator Exclusions</b>	<p>The denominator exclusions criteria are used to identify a subset of the denominator population by excluding inpatient hospitalizations with any of the following:</p> <ul style="list-style-type: none"> <li>• patients admitted for elective carotid intervention (implicitly modeled by inclusion of only non-elective hospitalizations)</li> <li>• a documented discharge disposition of: <ul style="list-style-type: none"> <li>• discharged to another hospital; or</li> <li>• left against medical advice; or</li> <li>• expired; or</li> <li>• discharged to either a health care facility or home, for hospice care</li> </ul> </li> <li>• have comfort measures documented</li> </ul>

## 2023 eCQM Flow – CMS71v12: Anticoagulation Therapy for Atrial Fibrillation/Flutter (STK-03)\*

*\*This flow diagram represents an overview of population criteria requirements. Please refer to the eCQM measure specification for a complete list of definitions, direct reference codes, data or timing elements included in this measure and required for submission.*

### Measure Flow Narrative (Continued)

The measure flow diagram on the preceding pages illustrates the steps to determine the population criteria for this measure.

<b>Numerator</b>	The numerator criteria identify a subset of the denominator population (that did not meet the denominator exclusions criteria) by including inpatient hospitalizations for patients prescribed or continuing to take anticoagulation therapy at hospital discharge
<b>Denominator Exceptions</b>	The denominator exceptions criteria identify a subset of the denominator population (that did not meet the denominator exclusions criteria or numerator criteria) by excluding inpatient hospitalizations for patients with a documented reason for not prescribing anticoagulation therapy at hospital discharge - either a qualifying medical reason or patient refusal