

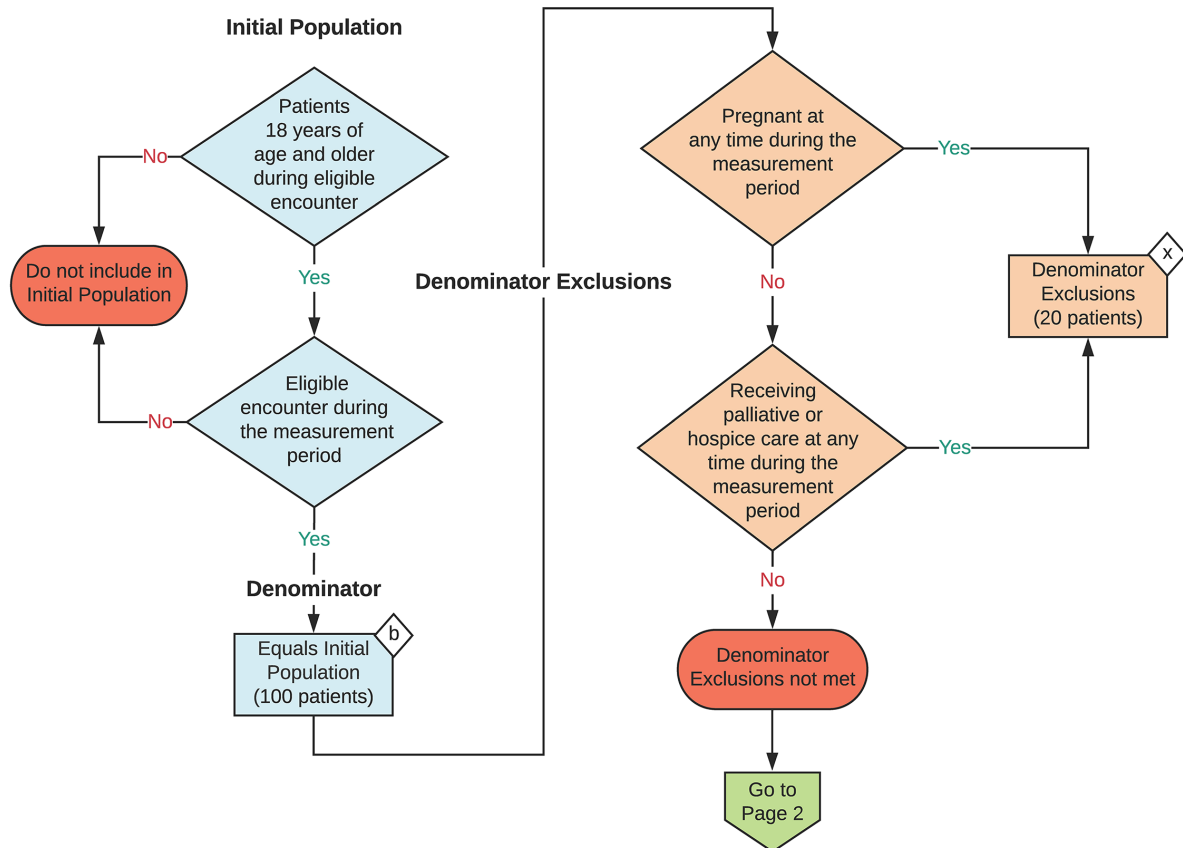
2023 eCQM Flow
eCQM Identifier: CMS69v11

NOTE: This flow diagram represents an overview of population criteria requirements. **Refer to the eCQM specification for a complete list of data elements included in this measure and required for submission.**

Preventive Care and Screening: Body Mass Index (BMI) Screening and Follow-Up Plan

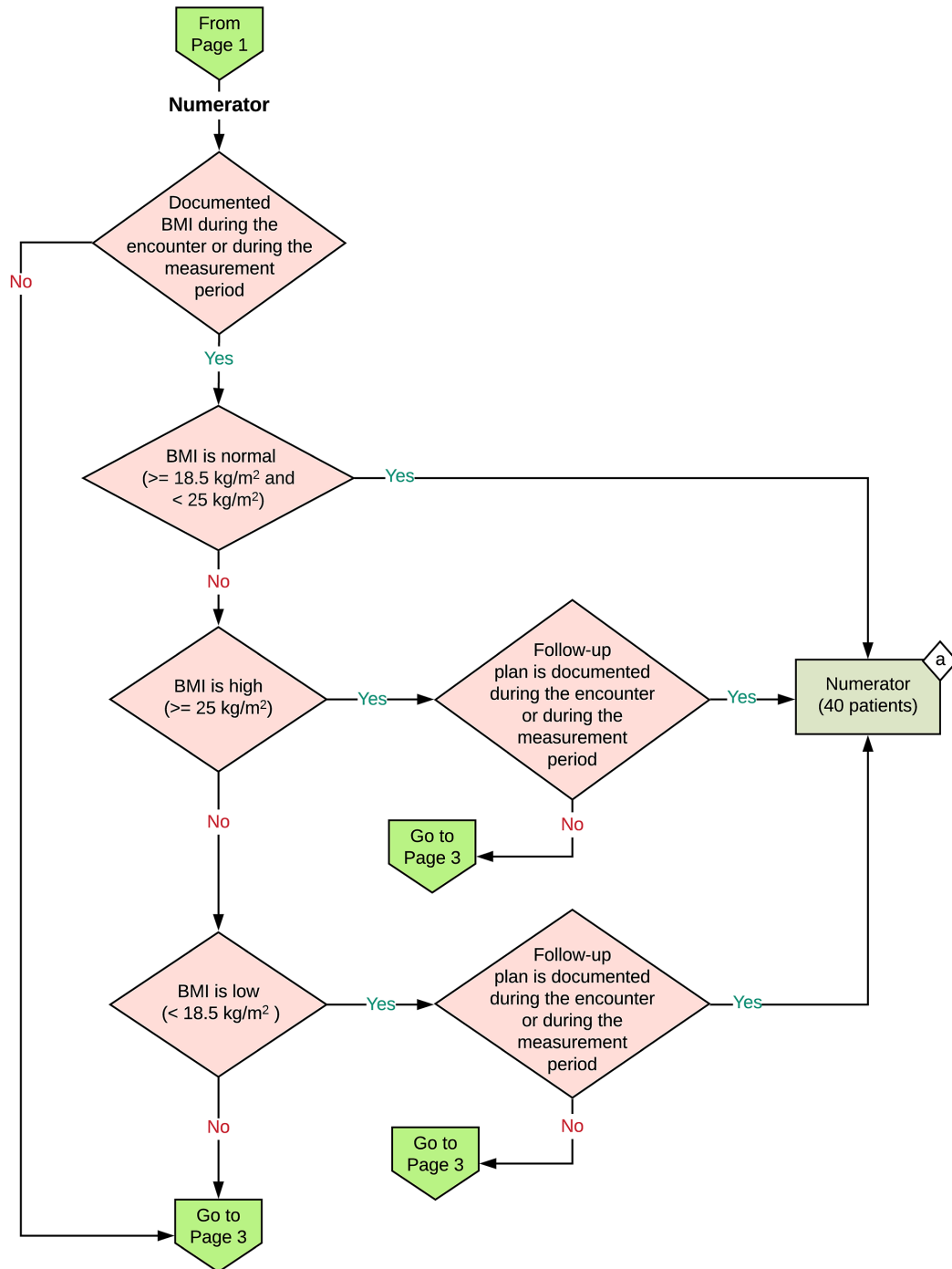
Percentage of patients aged 18 years and older with a BMI documented during the current encounter or during the measurement period AND who had a follow-up plan documented if BMI was outside of normal parameters

This eCQM is a patient-based measure



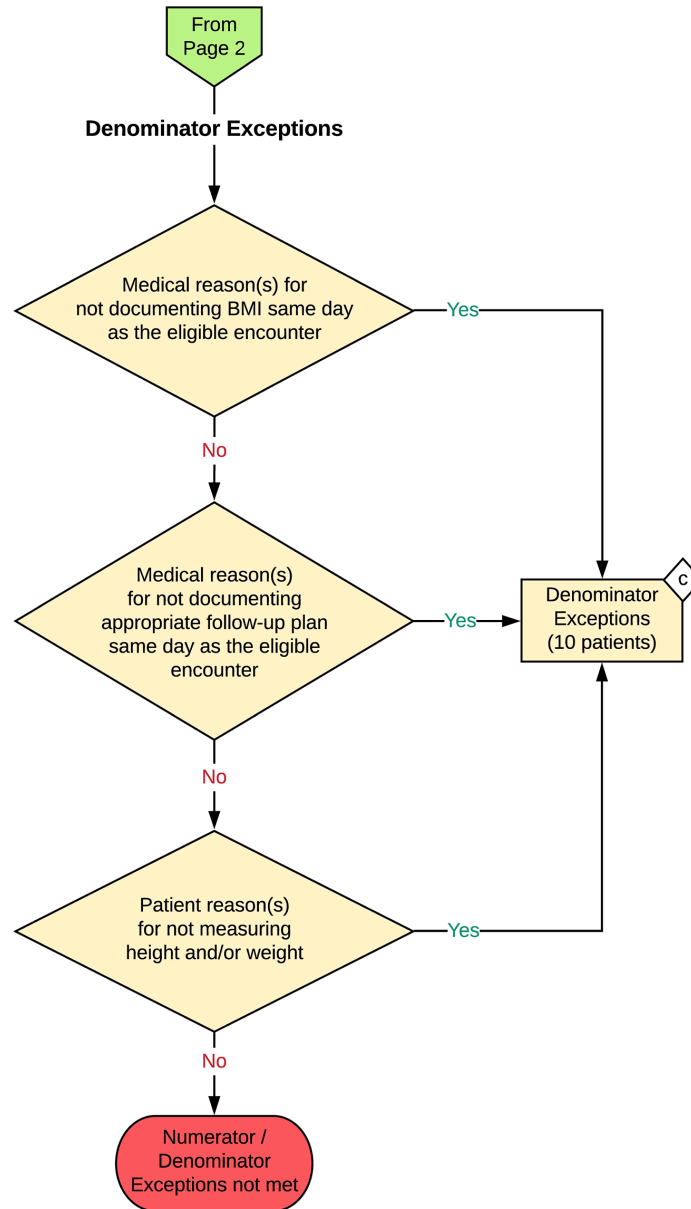
2023 eCQM Flow
eCQM Identifier: CMS69v11

Preventive Care and Screening: Body Mass Index (BMI)
Screening and Follow-Up Plan



2023 eCQM Flow
eCQM Identifier: CMS69v11

Preventive Care and Screening: Body Mass Index (BMI)
Screening and Follow-Up Plan



Sample Calculation

Performance Rate =

$$\frac{\text{Numerator (a = 40 patients)}}{\text{Denominator (b = 100 patients) - Denominator Exclusions (x = 20 patients) - Denominator Exceptions (c = 10 patients)}} = \frac{40}{70} = 57\%$$

eCQM Identifier: CMS69v11**eCQM Title: Preventive Care and Screening: Body Mass Index (BMI) Screening and Follow-Up Plan**

NOTE: This flow diagram represents an overview of population criteria requirements. Refer to the eCQM specification for a complete list of data elements included in this measure and required for submission.

Description: Percentage of patients aged 18 years and older with a BMI documented during the current encounter or during the measurement period AND had a follow-up plan documented if the BMI was outside of normal parameters.

This eCQM is a patient-based measure.

eCQM Flow Narrative**Initial Population**

Start by identifying the Initial Population, which includes patients 18 years of age and older during the encounter with an eligible encounter during the measurement period.

Denominator

The Denominator equals the Initial Population. In the sample calculation provided at the end of the eCQM flow, the Denominator is equal to 100 patients.

Denominator Exclusions

The Denominator Exclusions criteria identify a subset of the Denominator population by excluding patients who are pregnant at any time during the measurement period and patients receiving palliative care or hospice care at any time during the measurement period. In the sample calculation provided at the end of the eCQM flow, the Denominator Exclusions are equal to 20 patients.

Numerator

The Numerator criteria identify a subset of the Denominator population (that did not meet the Denominator Exclusions criteria) by including patients with a documented BMI during the eligible encounter or during the measurement period. Among these patients, the Numerator criteria include patients whose BMI is normal (greater than or equal to 18.5 kilograms per square meter and less than 25 kilograms per square meter), patients whose BMI is high (greater than or equal to 25 kilograms per square meter) and who have a follow-up plan that is documented during the encounter or during the measurement period and patients whose BMI is low (less than 18.5 kilograms per square meter) and who have a follow-up plan that is documented during the encounter or during the measurement period. In the sample calculation provided at the end of the eCQM flow, the Numerator is equal to 40 patients.

Denominator Exceptions

The Denominator Exceptions criteria identify patients from the Denominator that did not meet the Denominator Exclusions or Numerator population criteria due to a medical reason(s) for not documenting BMI the same day as the eligible encounter, a medical reason(s) for not documenting the appropriate follow-up plan the same day as the eligible encounter, or a patient reason for not measuring height and/or weight. In the sample calculation provided at the end of the eCQM flow, the Denominator Exceptions are equal to 10 patients.

Sample Calculation

A sample calculation is provided to help determine how the measure performance rate is derived. The measure performance rate is calculated by dividing the Numerator (total equals 40 patients) by the difference between the Denominator (total equals 100 patients), the Denominator Exclusions (total equals 20 patients), and the Denominator Exceptions (total equals 10 patients), which is equal to a score of 57 percent.