

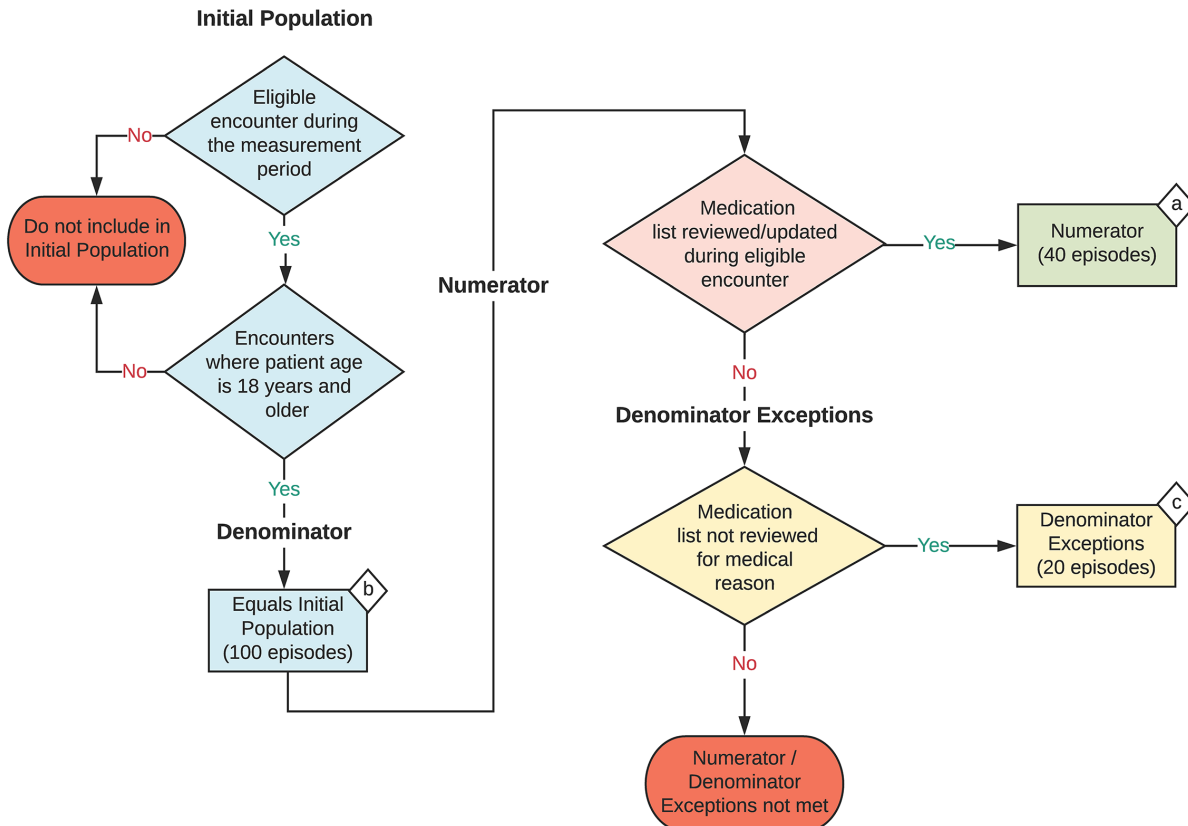
2023 eCQM Flow
eCQM Identifier: CMS68v12

NOTE: This flow diagram represents an overview of population criteria requirements. Refer to the eCQM specification for a complete list of data elements included in this measure and required for submission.

Documentation of Current Medications in the Medical Record

Percentage of visits for patients aged 18 years and older for which the eligible clinician attests to documenting a list of current medications using all immediate resources available on the date of the encounter

This eCQM is an episode-based measure



Sample Calculation

Performance Rate =

$$\frac{\text{Numerator (a = 40 episodes)}}{\text{Denominator (b = 100 episodes) - Denominator Exceptions (c = 20 episodes)}} = \frac{40}{80} = 50\%$$

eCQM Identifier: CMS68v12**eCQM Title: Documentation of Current Medications in the Medical Record**

NOTE: This flow diagram represents an overview of population criteria requirements. Refer to the eCQM specification for a complete list of data elements included in this measure and required for submission.

Description: Percentage of visits for patients aged 18 years and older for which the eligible clinician attests to documenting a list of current medications using all immediate resources available on the date of the encounter.

This eCQM is an episode-based measure.

eCQM Flow Narrative**Initial Population**

Start by identifying the Initial Population, which includes patients age 18 years of age and older with an eligible encounter during the measurement period.

Denominator

The Denominator equals the Initial Population. In the sample calculation provided at the end of the eCQM flow, the Denominator is equal to 100 episodes.

Numerator

The Numerator criteria identify a subset of the Denominator population by including episodes where a patient's medication list was reviewed/updated during the eligible encounter. In the sample calculation provided at the end of the eCQM flow, the Numerator is equal to 40 episodes.

Denominator Exceptions

The Denominator Exceptions criteria identify episodes from the Denominator population that did not meet the Numerator population criteria due to a medical reason for not reviewing the medication list. In the sample calculation provided at the end of the eCQM flow, the Denominator Exceptions are equal to 20 episodes.

Sample Calculation

A sample calculation is provided to help determine how the measure performance rate is derived. The measure performance rate is calculated by dividing the Numerator (total equals 40 episodes) by the difference between the Denominator (total equals 100 episodes) and the Denominator Exceptions (total equals 20 episodes), which is equal to a score of 50 percent.