

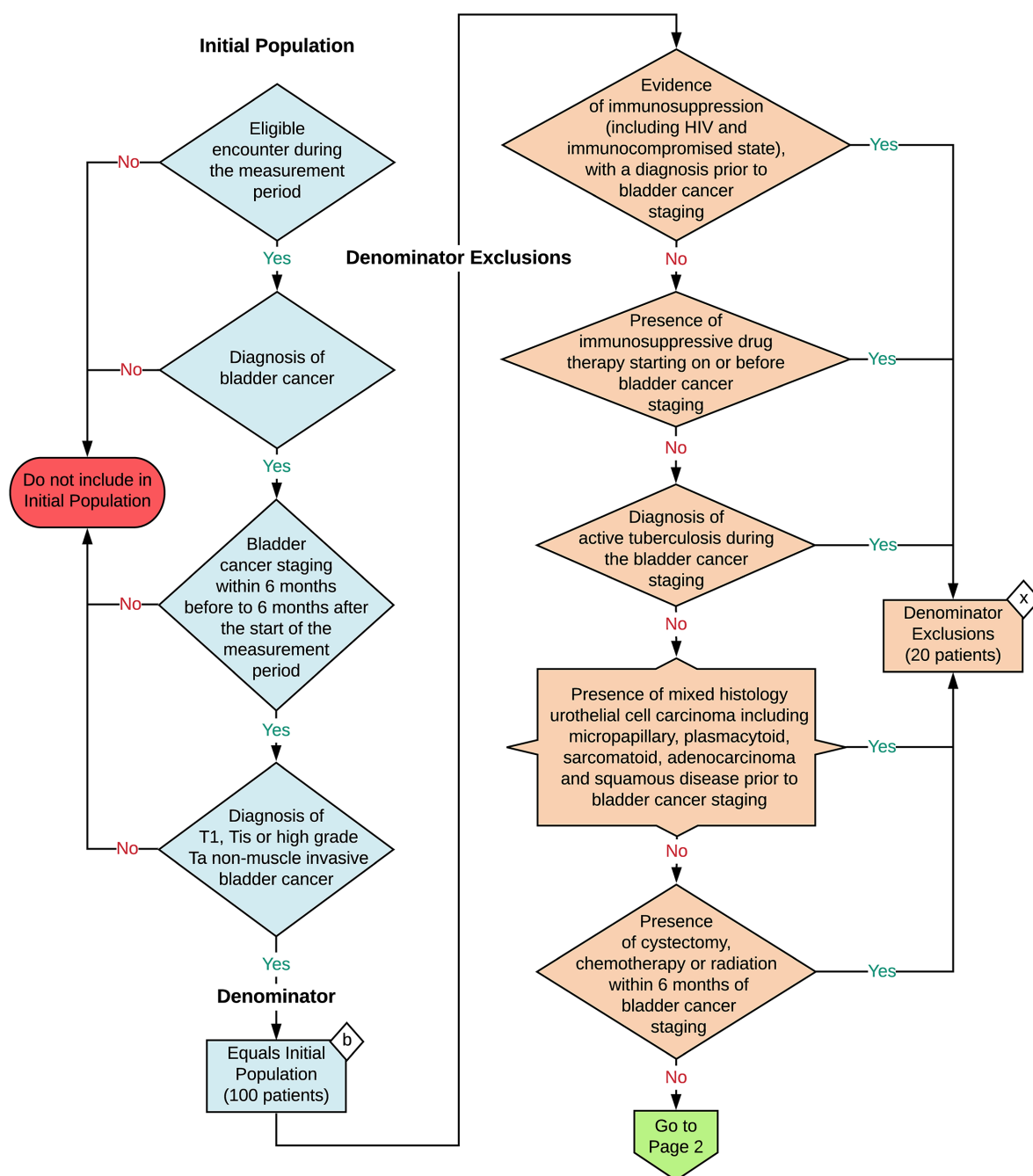
2024 eCQM Flow eCQM Identifier: CMS646v4

NOTE: This flow diagram represents an overview of population criteria requirements. **Refer to the eCQM specification for a complete list of data elements included in this measure and required for submission.**

Intravesical Bacillus-Calmette-Guerin for non-muscle invasive bladder cancer

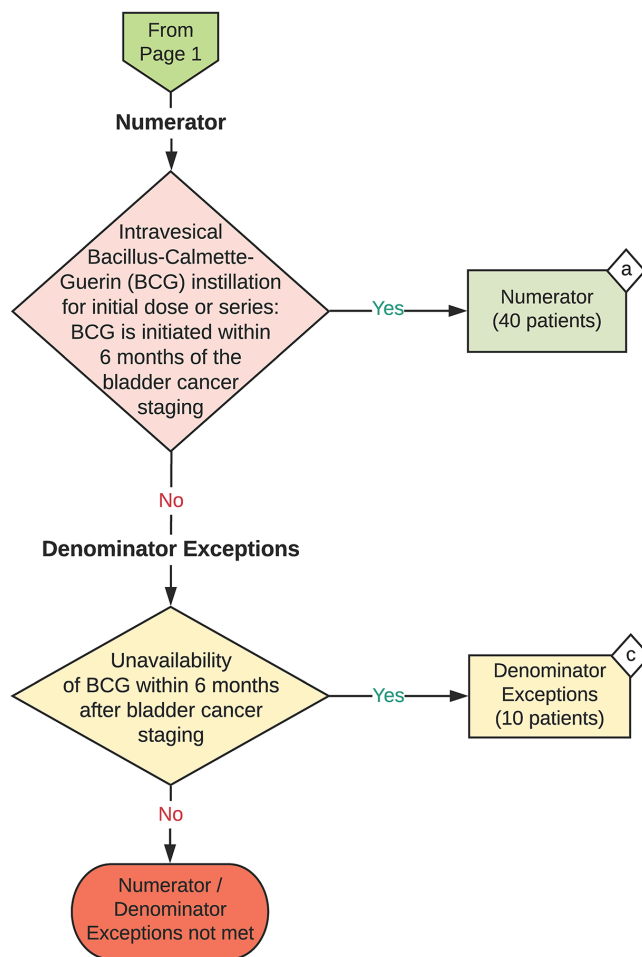
Percentage of patients initially diagnosed with non-muscle invasive bladder cancer and who received intravesical Bacillus-Calmette-Guerin (BCG) within 6 months of bladder cancer staging

This eCQM is a patient-based measure



2024 eCQM Flow
eCQM Identifier: CMS646v4

Intravesical Bacillus-Calmette-Guerin for
non-muscle invasive bladder cancer



Sample Calculation

Performance Rate =

Numerator (a = 40 patients)

$$\frac{\text{Numerator (a = 40 patients)}}{\text{Denominator (b = 100 patients) - Denominator Exclusions (x = 20 patients) - Denominator Exceptions (x = 10 patients)}} = \frac{40}{70} = 57\%$$

eCQM Identifier: CMS646v4**eCQM Title: Intravesical Bacillus-Calmette-Guerin for non-muscle invasive bladder cancer**

NOTE: This flow diagram represents an overview of population criteria requirements. Refer to the eCQM specification for a complete list of data elements included in this measure and required for submission

Description: Percentage of patients initially diagnosed with non-muscle invasive bladder cancer and who received intravesical Bacillus-Calmette-Guerin (BCG) within 6 months of bladder cancer staging.

This eCQM is a patient-based measure.

eCQM Flow Narrative**Initial Population**

Start by identifying the Initial Population, which includes all patients initially diagnosed with T1, Tis or high grade Ta non-muscle invasive bladder cancer with bladder cancer staging within 6 months before to 6 months after the start of the measurement period and a qualified encounter in the measurement period.

Denominator

The Denominator equals the Initial Population. In the sample calculation provided at the end of the eCQM flow, the Denominator is equal to 100 patients.

Denominator Exclusions

The Denominator Exclusions criteria identify a subset of the Denominator population by excluding patients that are immunosuppressed (e.g., HIV and immunocompromised) with a diagnosis prior to bladder cancer staging or are on immunosuppressive drug therapy starting on or before bladder cancer staging. The Denominator Exclusions criteria also excludes patients with a active diagnosis of tuberculosis during the bladder cancer staging ; a mixed histology urothelial cell carcinoma including micropapillary, plasmacytoid, sarcomatoid, adenocarcinoma and squamous disease prior to bladder cancer staging; or have undergone cystectomy, chemotherapy or radiation within 6 months of bladder cancer staging. In the sample calculation provided at the end of the eCQM flow, the Denominator Exclusions are equal to 20 patients.

Numerator

The Numerator criteria identify a subset of the Denominator population (that did not meet the Denominator Exclusions criteria) by including patients with an intravesical BacillusCalmette-Guerin (BCG) instillation for initial dose or series. BCG is initiated within 6 months of the bladder cancer staging. In the sample calculation provided at the end of the eCQM flow, the Numerator is equal to 40 patients.

Denominator Exceptions

The Denominator Exceptions criteria identify patients from the Denominator that did not meet the Numerator population criteria due to unavailability of BCG within 6 months after bladder cancer staging. In the sample calculation provided at the end of the eCQM flow, the Denominator Exceptions are equal to 10 patients.

Sample Calculation

A sample calculation is provided to help determine how the measure performance rate is derived. The measure performance rate is calculated by dividing the Numerator (total equals 40 patients) by the difference between the Denominator (total equals 100 patients), the Denominator Exclusions (total equals 20 patients), and the Denominator Exceptions (total equals 10 patients) which is equal to a score of 57 percent.