

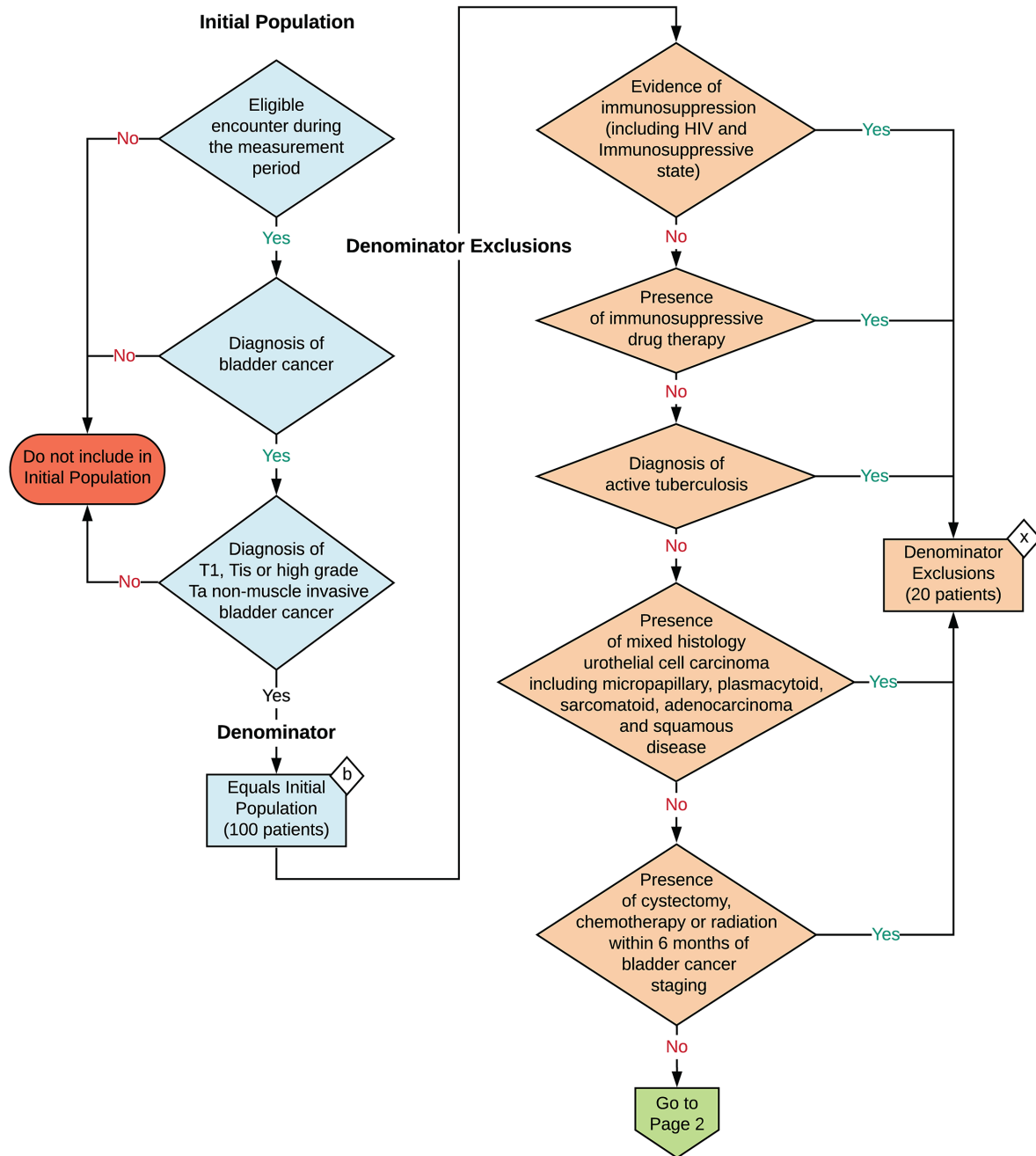
2023 eCQM Flow
eCQM Identifier: CMS646v3

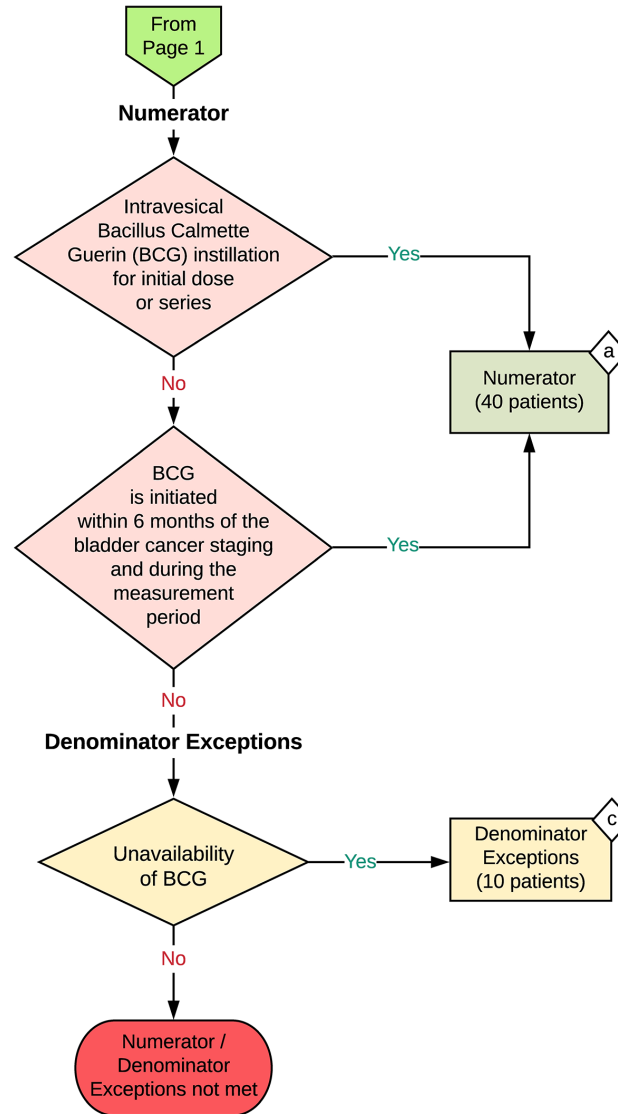
NOTE: This flow diagram represents an overview of population criteria requirements. **Refer to the eCQM specification for a complete list of data elements included in this measure and required for submission.**

Intravesical Bacillus-Calmette-Guerin for non-muscle invasive bladder cancer

Percentage of patients initially diagnosed with non muscle invasive bladder cancer and who received intravesical Bacillus-Calmette-Guerin (BCG) within 6 months of bladder cancer staging

This eCQM is a patient-based measure





Sample Calculation

Performance Rate =

$$\frac{\text{Numerator (a = 40 patients)}}{\text{Denominator (b = 100 patients) - Denominator Exclusions (x = 20 patients) - Denominator Exceptions (x = 10 patients)}} = \frac{40}{70} = 57\%$$

eCQM Identifier: CMS646v3**eCQM Title: Intravesical Bacillus-Calmette-Guerin for non-muscle invasive bladder cancer**

NOTE: This flow diagram represents an overview of population criteria requirements. Refer to the eCQM specification for a complete list of data elements included in this measure and required for submission

Description: Percentage of patients initially diagnosed with non-muscle invasive bladder cancer and who received intravesical Bacillus-Calmette-Guerin (BCG) within 6 months of bladder cancer staging.

This eCQM is a patient-based measure.

eCQM Flow Narrative**Initial Population**

Start by identifying the Initial Population, which includes all patients initially diagnosed with T1, Tis or high grade Ta non-muscle invasive bladder cancer and a qualified encounter in the measurement period.

Denominator

The Denominator equals the Initial Population. In the sample calculation provided at the end of the eCQM flow, the Denominator is equal to 100 patients.

Denominator Exclusions

The Denominator Exclusions criteria identify a subset of the Denominator population by excluding patients that are immunosuppressed (e.g., HIV and immunocompromised) or are on immunosuppressive drug therapy. The Denominator Exclusions criteria also excludes patients with a active diagnosis of tuberculosis, a mixed histology urothelial cell carcinoma including micropapillary, plasmacytoid, sarcomatoid, adenocarcinoma and squamous disease or have undergone cystectomy, chemotherapy or radiation within 6 months of Bladder Cancer Staging. In the sample calculation provided at the end of the eCQM flow, the Denominator Exclusions are equal to 20 patients.

Numerator

The Numerator criteria identify a subset of the Denominator population (that did not meet the Denominator Exclusions criteria) by including patients with an intravesical Bacillus-Calmette Guerin (BCG) instillation for initial dose or series. BCG is initiated within 6 months of the bladder cancer staging and during the measurement period. In the sample calculation provided at the end of the eCQM flow, the Numerator is equal to 40 patients.

Denominator Exceptions

The Denominator Exceptions criteria identify patients from the Denominator that did not meet the Numerator population criteria due to unavailability of BCG. In the sample calculation provided at the end of the eCQM flow, the Denominator Exceptions are equal to 10 patients.

Sample Calculation

A sample calculation is provided to help determine how the measure performance rate is derived. The measure performance rate is calculated by dividing the Numerator (total equals 40 patients) by the difference between the Denominator (total equals 100 patients), the Denominator Exclusions (total

equals 20 patients), and the Denominator Exceptions (total equals 10 patients) which is equal to a score of 57 percent.