

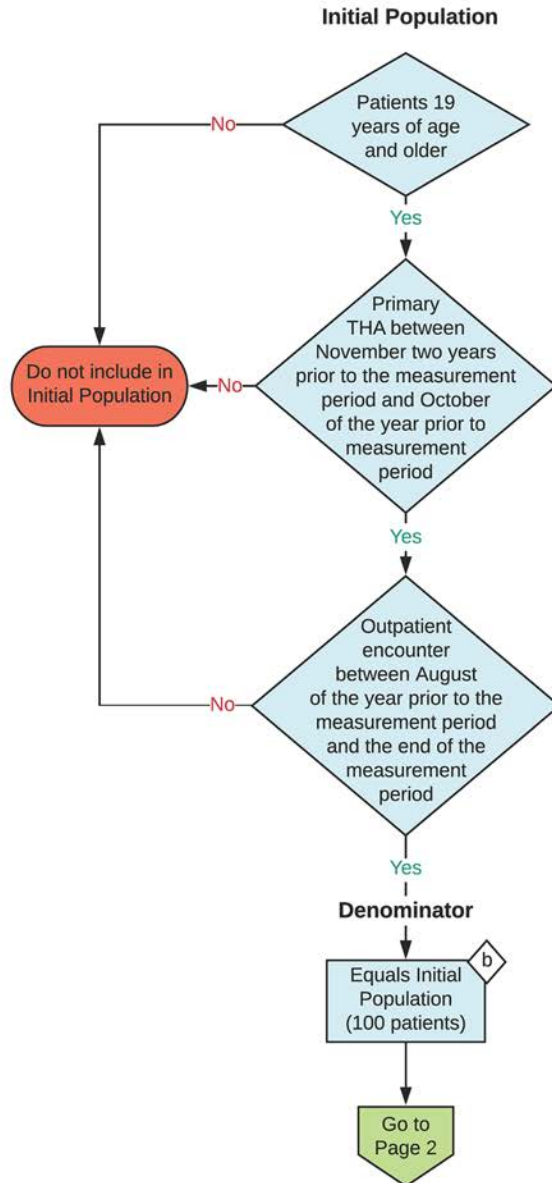
2025 eCQM Flow
eCQM Identifier: CMS56v13

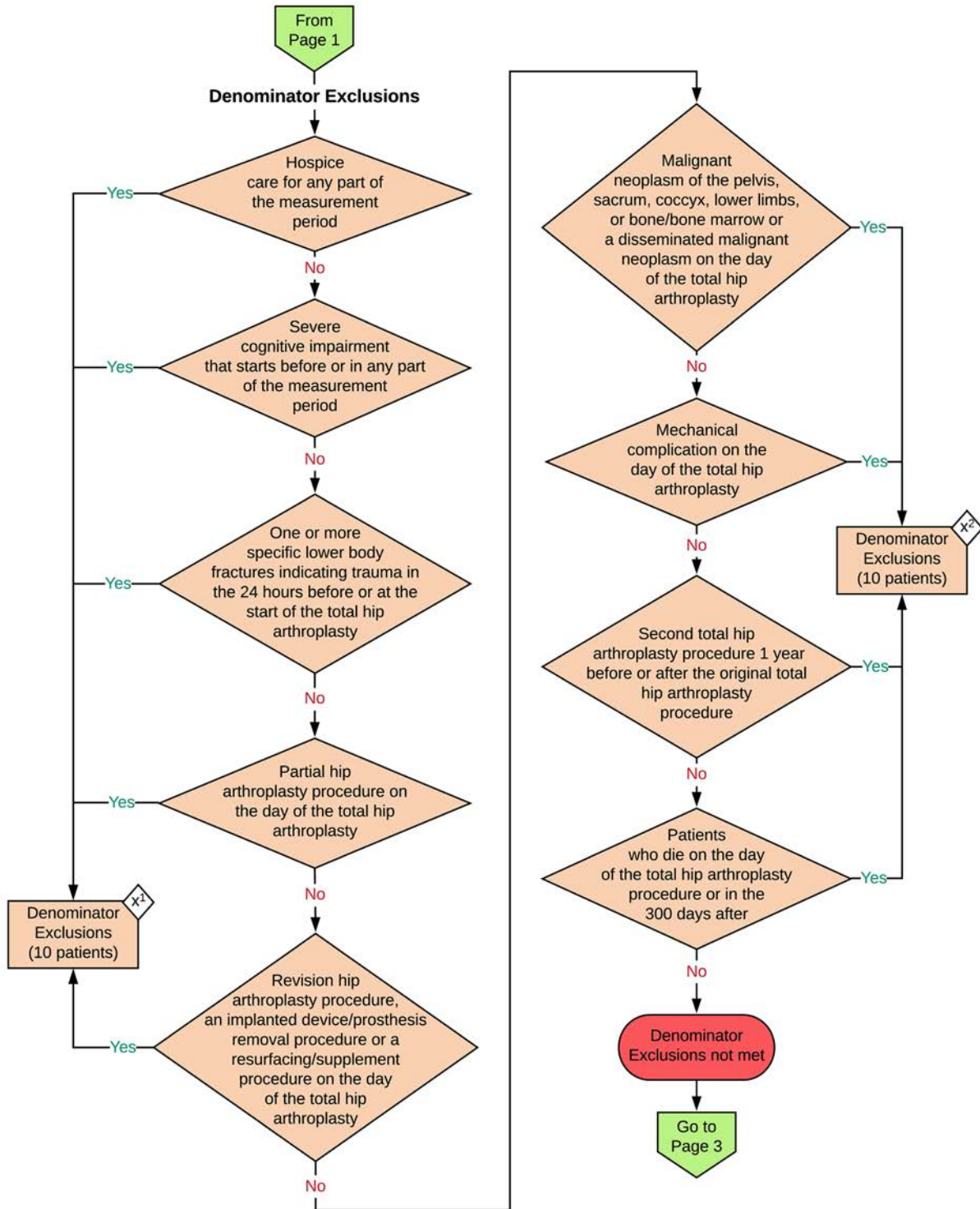
NOTE: This flow diagram represents an overview of population criteria requirements. Refer to the eCQM specification for a complete list of data elements included in this measure and required for submission.

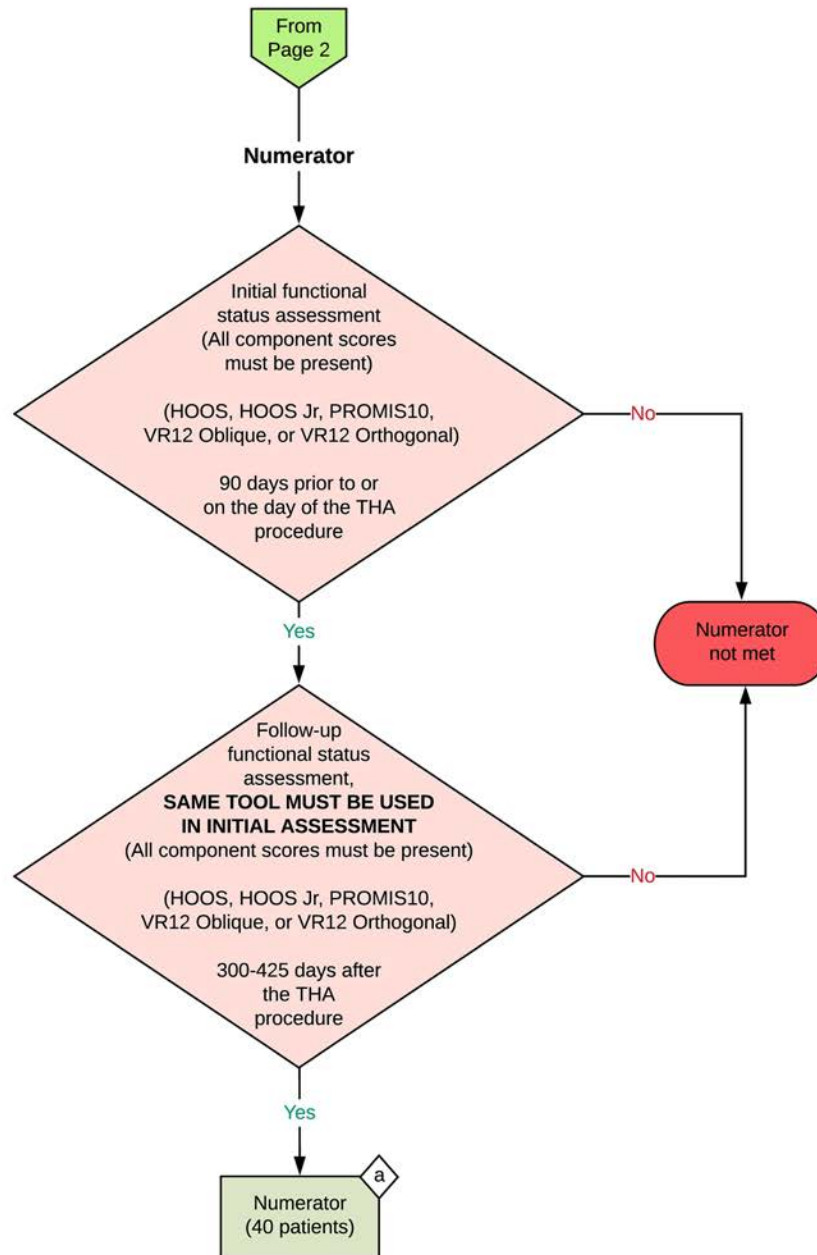
Functional Status Assessment for Total Hip Replacement

Percentage of patients 19 years of age and older who received an elective primary total hip arthroplasty (THA) and completed a functional status assessment within 90 days prior to the surgery and in the 300-425 days after the surgery

This eCQM is a patient-based measure







Sample Calculation

Performance Rate =

Numerator (a = 40 patients)		$\frac{40}{80} = 50\%$
Denominator (b = 100 patients) - Denominator Exclusions (x ¹ + x ² = 20 patients)		$\frac{40}{80} = 50\%$

CQM Identifier: CMS56v13**eCQM Title: Functional Status Assessment for Total Hip Replacement**

NOTE: This flow diagram represents an overview of population criteria requirements. Refer to the eCQM specification for a complete list of data elements included in this measure and required for submission.

Description: Percentage of patients 19 years of age and older who received an elective primary total hip arthroplasty (THA) and completed a functional status assessment within 90 days prior to the surgery and in the 300-425 days after the surgery.

This eCQM is a patient-based measure.

eCQM Flow Narrative**Initial Population**

Start by identifying the Initial Population, which includes patients 19 years of age and older with a primary THA between November two years prior to the measurement period and October of the year prior to measurement period; and who had an outpatient encounter between August of the year prior to the measurement period and the end of the measurement period.

Denominator

The Denominator equals the Initial Population. In the sample calculation provided at the end of the eCQM flow, the Denominator is equal to 100 patients.

Denominator Exclusions

The Denominator Exclusions criteria identify a subset of the Denominator population by excluding patients who are in hospice care for any part of the measurement period; patients with severe cognitive impairment that starts before or in any part of the measurement period; patients with one or more specific lower body fractures indicating trauma in the 24 hours before or at the start of the total hip arthroplasty; patients with a partial hip arthroplasty procedure on the day of the total hip arthroplasty; patients with a revision hip arthroplasty procedure, an implanted device/prosthesis removal procedure or a resurfacing/supplement procedure on the day of the total hip arthroplasty; patients with a malignant neoplasm of the pelvis, sacrum, coccyx, lower limbs, or bone/bone marrow or a disseminated malignant neoplasm on the day of the total hip arthroplasty; patients with a mechanical complication on the day of the total hip arthroplasty; patients with a second total hip arthroplasty procedure 1 year before or after the original total hip arthroplasty procedure; patients who die on the day of the total hip arthroplasty procedure or in the 300 days after. In the sample calculation provided at the end of the eCQM flow, the Denominator Exclusions are equal to 20 patients.

Numerator

The Numerator criteria identify a subset of the Denominator population (that did not meet the Denominator Exclusions criteria) by including patients with an initial functional status assessment with all component scores present (HOOS, HOOS Jr, PROMIS10, VR12 Oblique, or VR12 Orthogonal) 90 days prior to or on the day of the THA procedure and a follow-up functional status assessment using the same tool used in the initial assessment and with all component scores present (HOOS, HOOS Jr, PROMIS10, VR12 Oblique, or VR12 Orthogonal) 300 to 425 days after the THA procedure. In the sample calculation provided at the end of the eCQM flow, the Numerator is equal to 40 patients.

Sample Calculation

A sample calculation is provided to help determine how the measure performance rate is derived. The measure performance rate is calculated by dividing the Numerator (total equals 40 patients) by the difference between the Denominator (total equals 100 patients) and the Denominator Exclusions (total equals 20 patients), which is equal to a score of 50 percent.