

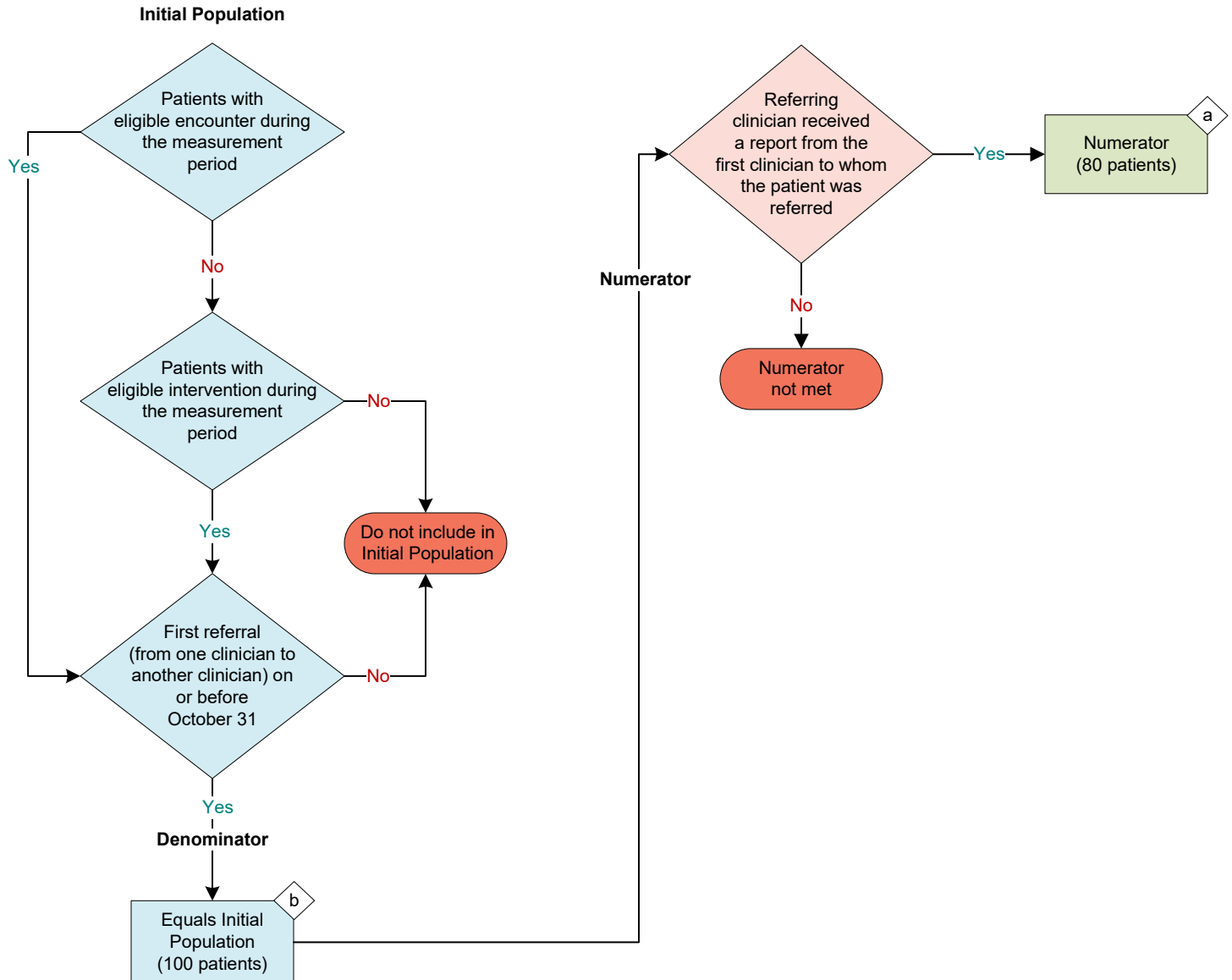
2026 eCQM Flow
eCQM Identifier: CMS50v14

NOTE: This flow diagram represents an overview of population criteria requirements. **Refer to the eCQM specification for a complete list of data elements included in this measure and required for submission.**

Closing the Referral Loop: Receipt of Specialist Report

Percentage of patients with referrals, regardless of age, for which the referring clinician receives a report from the clinician to whom the patient was referred

This eCQM is a patient-based measure



Performance Rate =

Sample Calculation

$$\frac{\text{Numerator (a = 80 patients)}}{\text{Denominator (b = 100 patients)}} = \frac{80}{100} = 80\%$$

eCQM Identifier: CMS50v14**eCQM Title: Closing the Referral Loop: Receipt of Specialist Report**

NOTE: This flow diagram represents an overview of population criteria requirements. Refer to the eCQM specification for a complete list of data elements included in this measure and required for submission.

Description: Percentage of patients with referrals, regardless of age, for which the referring clinician receives a report from the clinician to whom the patient was referred.

This eCQM is a patient-based measure.

eCQM Flow Narrative**Initial Population**

Start by identifying the Initial Population, which includes patients who had an eligible encounter or eligible intervention during the measurement period and were first referred by one clinician to another clinician on or before October 31.

Denominator

The Denominator equals the Initial Population. In the sample calculation provided at the end of the eCQM flow, the Denominator is equal to 100 patients.

Numerator

The Numerator criteria identify a subset of the Denominator population by including patients whose referring clinician received a report from the first clinician to whom the patient was referred. In the sample calculation provided at the end of the eCQM flow, the Numerator is equal to 80 patients.

Sample Calculation

A sample calculation is provided to help determine how the measure performance rate is derived. The measure performance rate is calculated by dividing the Numerator (total equals 80 patients) by the Denominator (total equals 100 patients), which is equal to a score of 80 percent.