

**2025 eCQM Flow**  
**eCQM Identifier: CMS347v8**

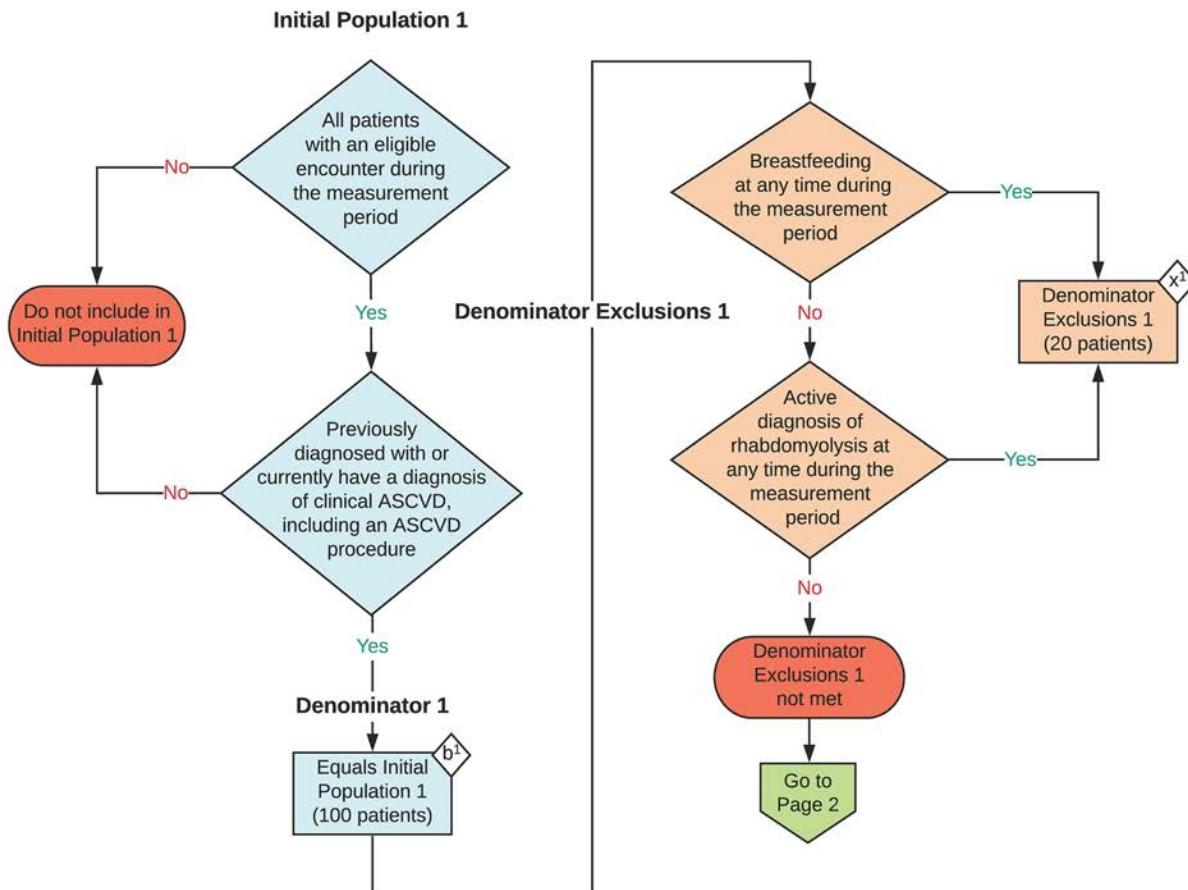
**NOTE:** This flow diagram represents an overview of population criteria requirements. Refer to the eCQM specification for a complete list of data elements included in this measure and required for submission.

**Statin Therapy for the Prevention and Treatment of Cardiovascular Disease**

Percentage of the following patients - all considered at high risk of cardiovascular events - who were prescribed or were on statin therapy during the measurement period:

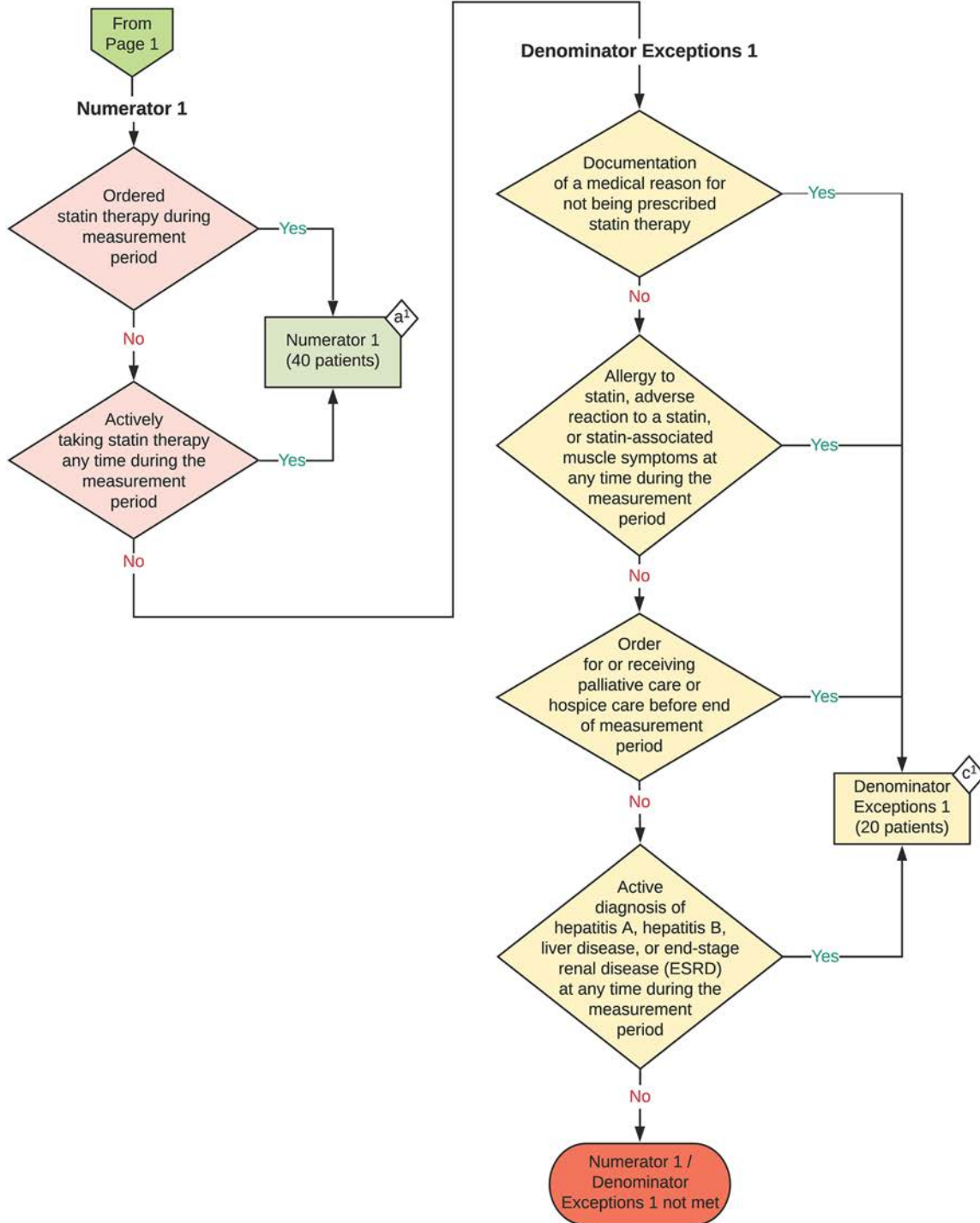
- \*All patients who were previously diagnosed with or currently have a diagnosis of clinical atherosclerotic cardiovascular disease (ASCVD), including an ASCVD procedure; OR
- \*Patients aged 20 to 75 years who have ever had a low-density lipoprotein cholesterol (LDL-C) level  $\geq 190$  mg/dL or were previously diagnosed with or currently have an active diagnosis of familial hypercholesterolemia; OR
- \*Patients aged 40-75 years with a diagnosis of diabetes; OR
- \*Patients aged 40 to 75 with a 10-year ASCVD risk score of  $\geq 20$  percent

**This eCQM is a patient-based measure**



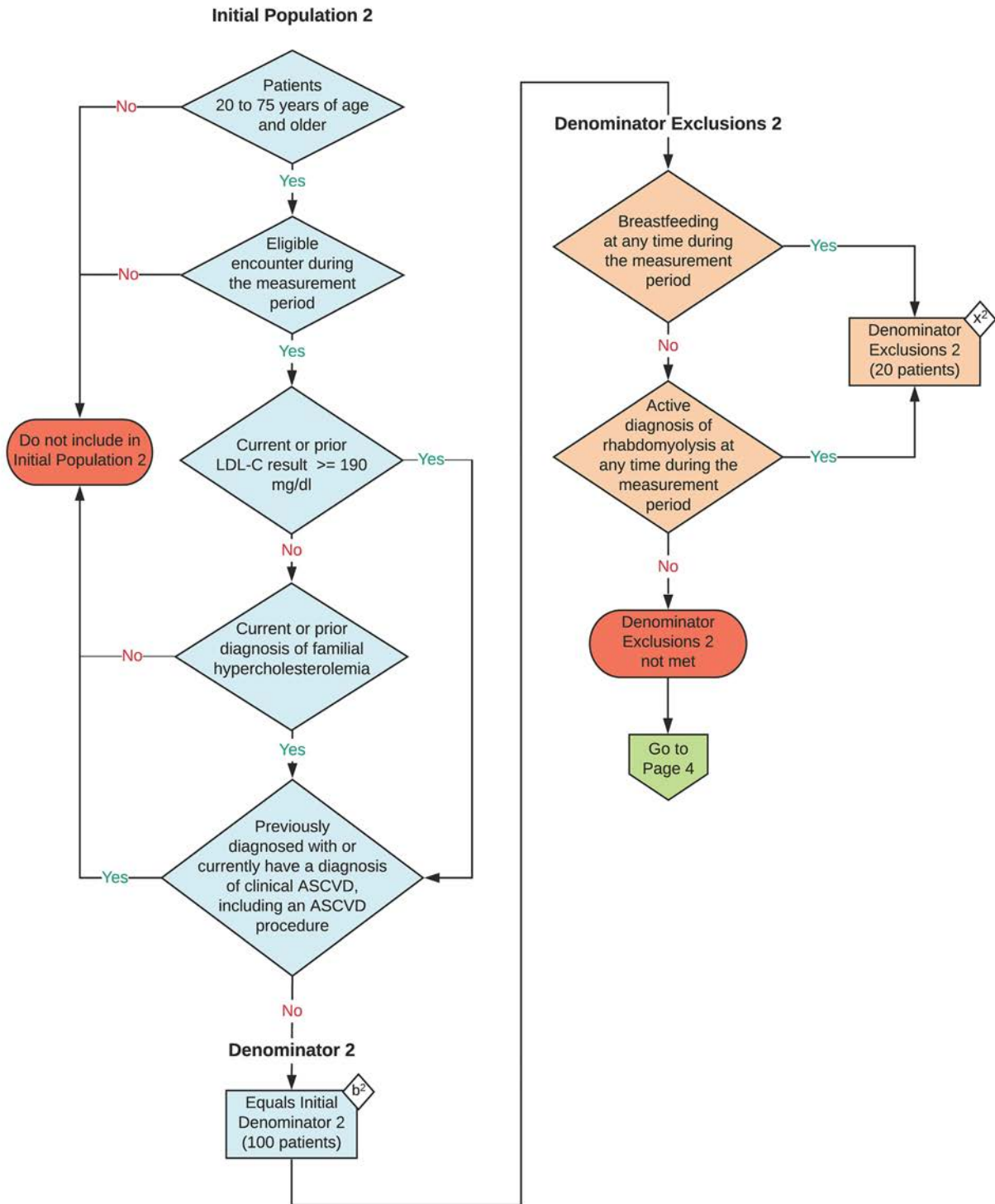
2025 eCQM Flow  
eCQM Identifier: CMS347v8

Statin Therapy for the Prevention and Treatment of  
Cardiovascular Disease



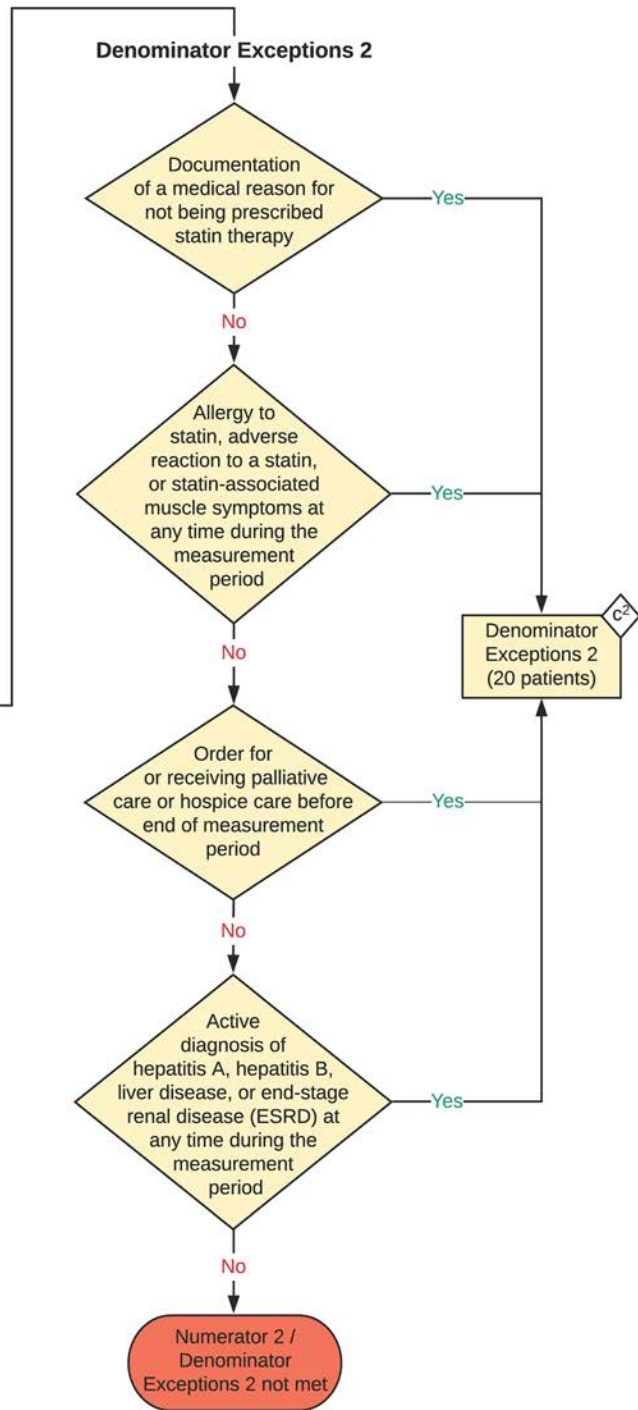
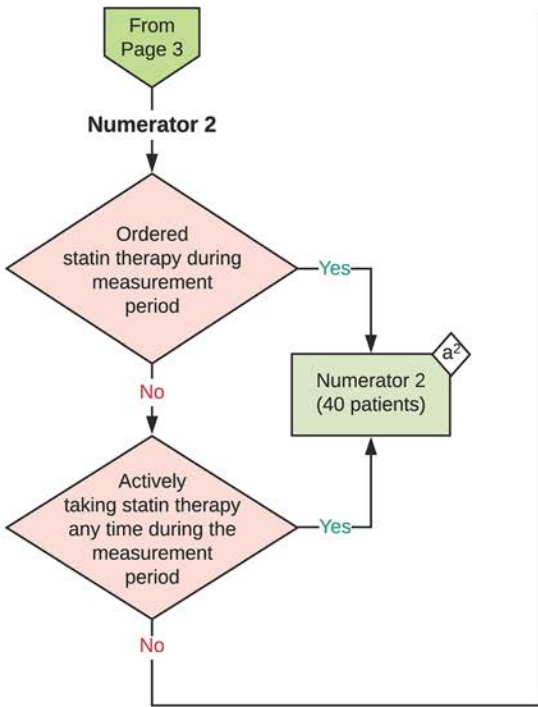
2025 eCQM Flow  
eCQM Identifier: CMS347v8

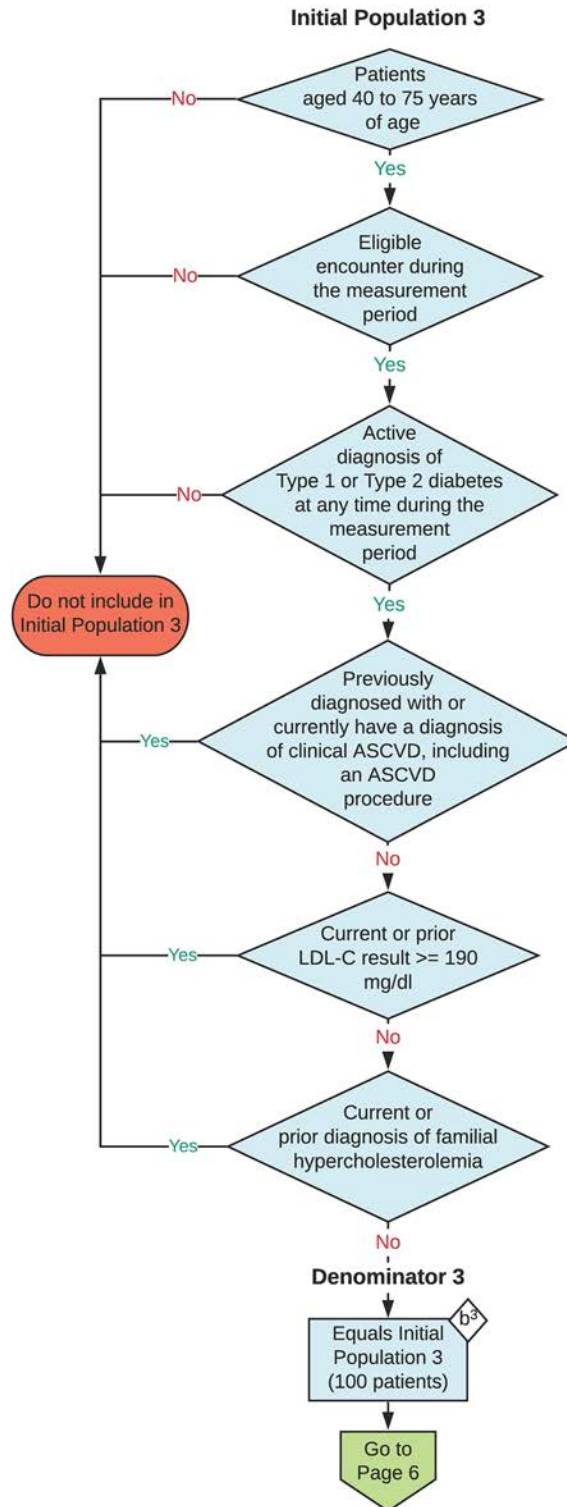
Statin Therapy for the Prevention and Treatment of  
Cardiovascular Disease

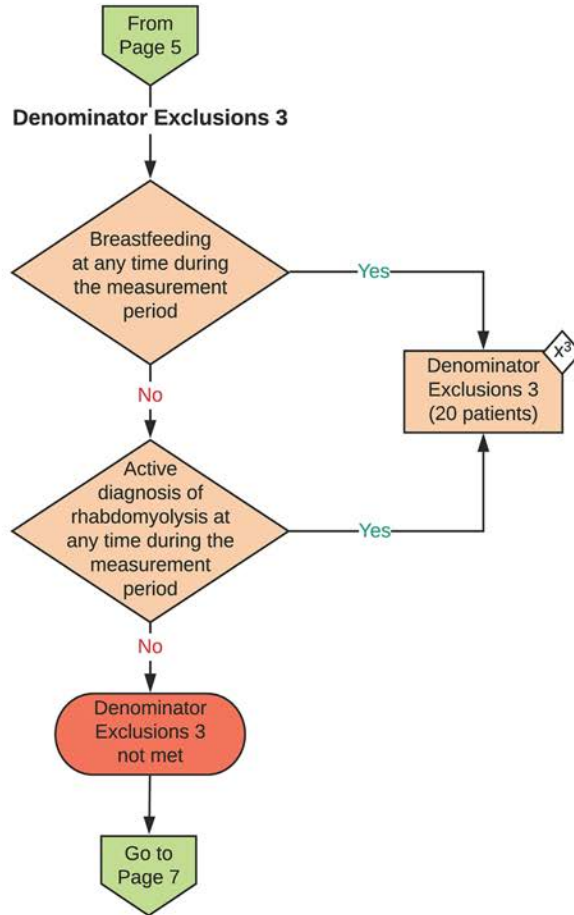


2025 eCQM Flow  
eCQM Identifier: CMS347v8

Statin Therapy for the Prevention and Treatment of  
Cardiovascular Disease

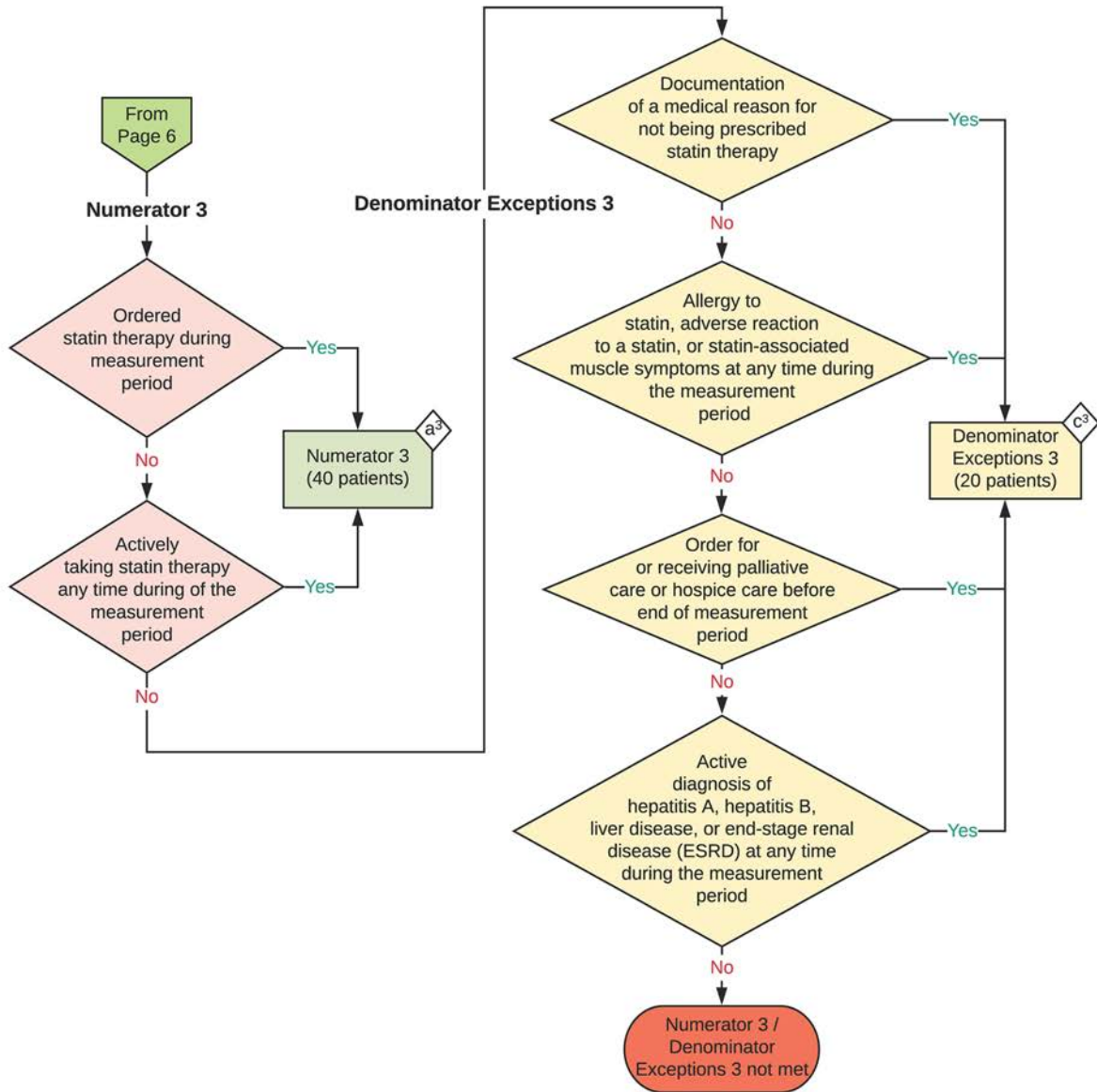


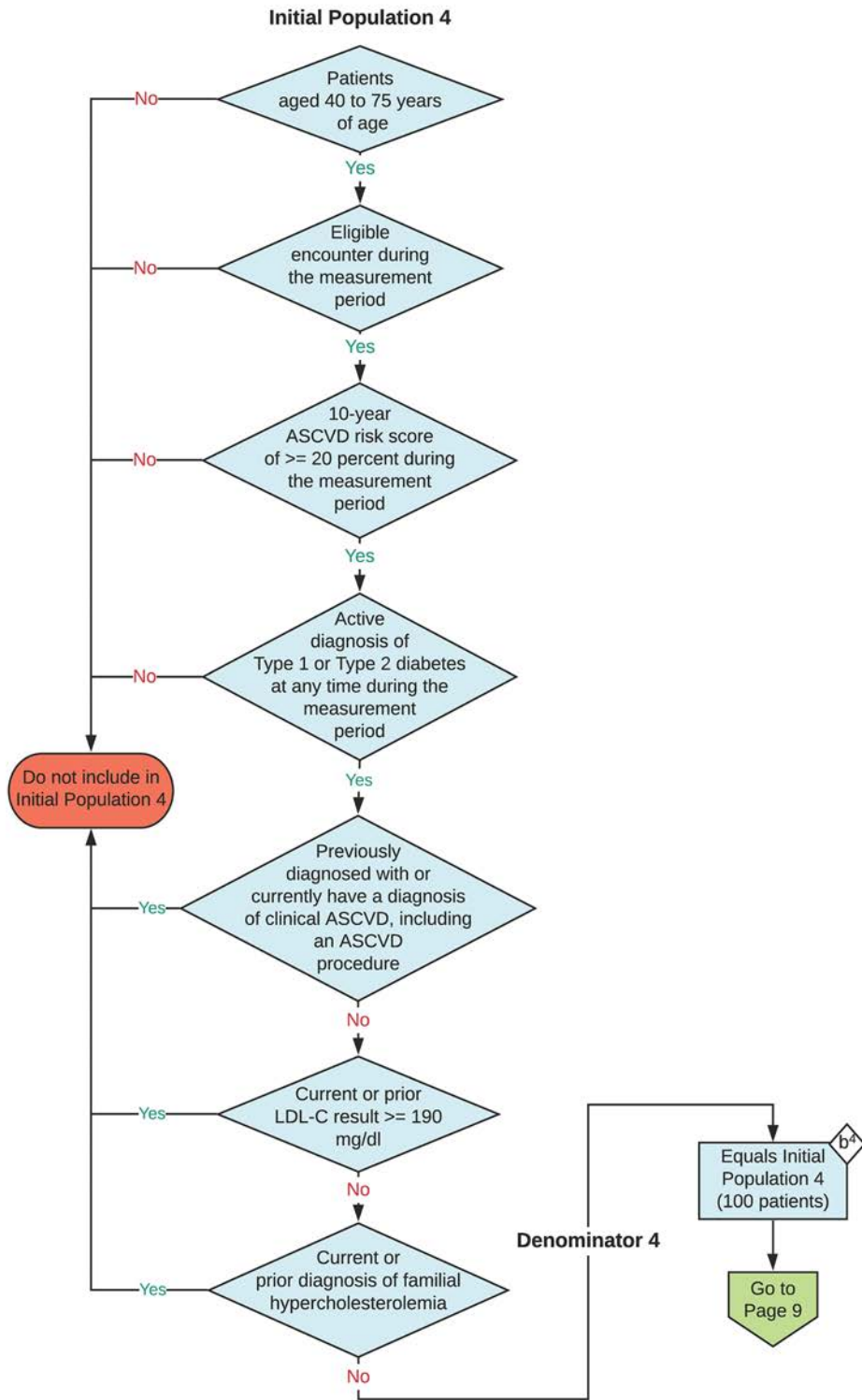




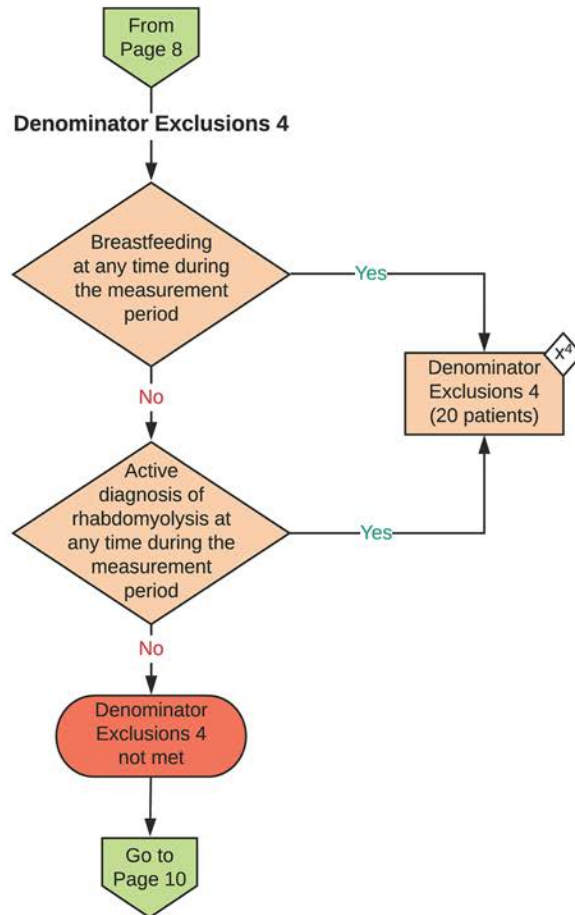
2025 eCQM Flow  
eCQM Identifier: CMS347v8

**Statin Therapy for the Prevention and Treatment of Cardiovascular Disease**



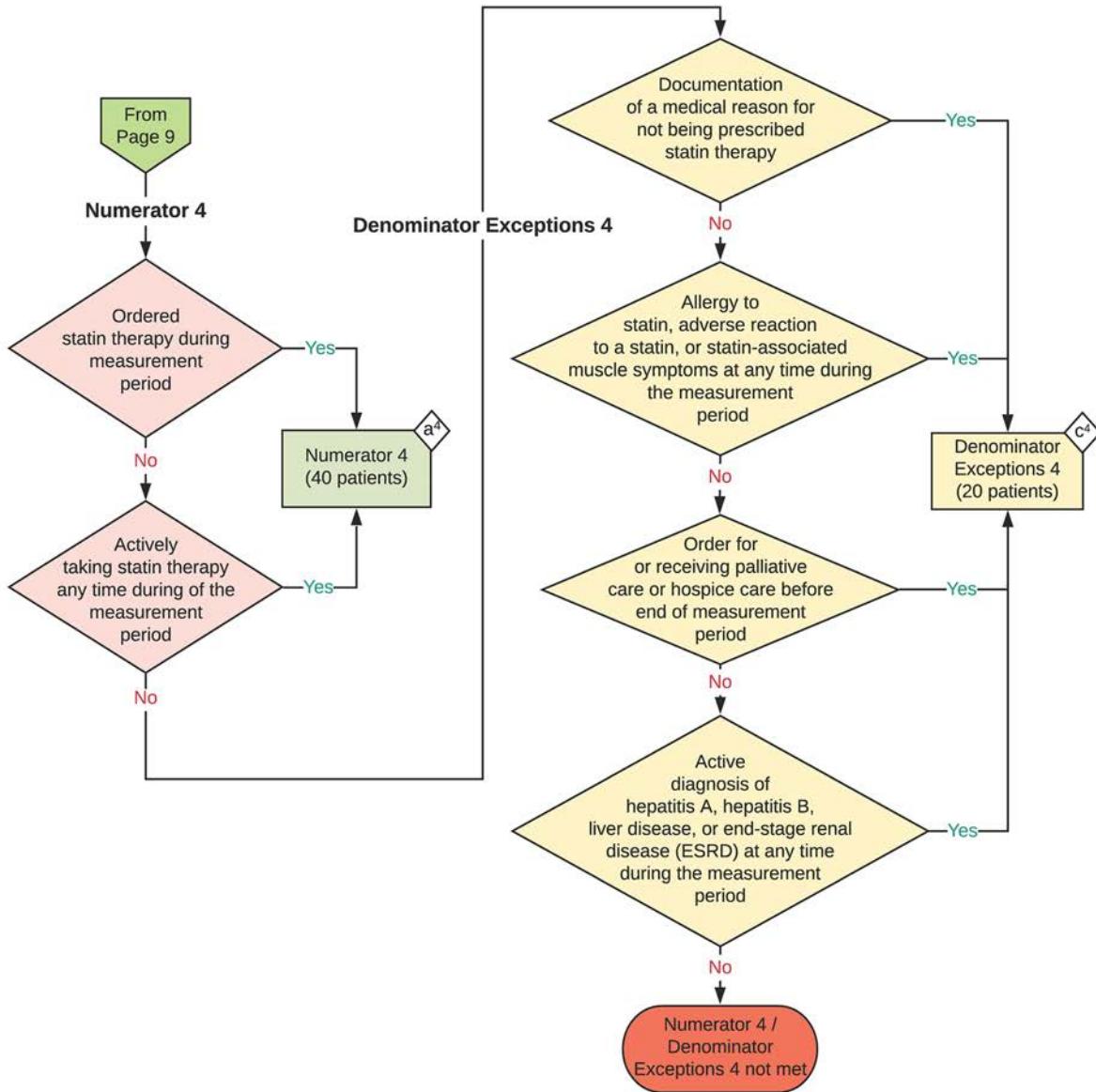






2025 eCQM Flow  
eCQM Identifier: CMS347v8

**Statin Therapy for the Prevention and Treatment of Cardiovascular Disease**



**Sample Calculation:**

**Performance Rate\* (Population 1, 2, 3 and 4) =**

$$\frac{\text{Numerator 1 (a}^1 + \text{a}^2 + \text{a}^3 + \text{a}^4 = 160 \text{ patients)}}{\text{Denominator (b}^1 + \text{b}^2 + \text{b}^3 + \text{b}^4 = 400 \text{ patients) - Denominator Exclusions (x}^1 + \text{x}^2 + \text{x}^3 + \text{x}^4 = 80 \text{ patients) - Denominator Exceptions (c}^1 + \text{c}^2 + \text{c}^3 + \text{c}^4 = 80 \text{ patients)}} = \frac{160}{240} = 67\%$$

\* This eCQM is intended to have one performance rate

**eCQM Identifier: CMS347v8****eCQM Title: Statin Therapy for the Prevention and Treatment of Cardiovascular Disease**

**NOTE:** This flow diagram represents an overview of population criteria requirements. Refer to the eCQM specification for a complete list of data elements included in this measure and required for submission.

**Description:** Percentage of the following patients - all considered at high risk of cardiovascular events - who were prescribed or were on statin therapy during the measurement period:

\*All patients who were previously diagnosed with or currently have a diagnosis of clinical atherosclerotic cardiovascular disease (ASCVD), including an ASCVD procedure; OR

\*Patients aged 20 to 75 years who have ever had a low-density lipoprotein cholesterol (LDL-C) level  $\geq$  190 mg/dL or were previously diagnosed with or currently have an active diagnosis of familial hypercholesterolemia; OR

\*Patients aged 40-75 years with a diagnosis of diabetes; OR

\*Patients aged 40 to 75 with a 10-year ASCVD risk score of  $\geq$  20 percent

**This eCQM is a patient-based measure.**

**eCQM Flow Narrative****Initial Population 1**

Start by identifying the Initial Population 1, which includes all patients with an eligible encounter during the measurement period who were previously diagnosed with or currently have a diagnosis of clinical atherosclerotic cardiovascular disease (ASCVD), including an ASCVD procedure.

**Denominator 1**

The Denominator 1 is the same as Initial Population 1. In the sample calculation provided at the end of the eCQM flow, Denominator 1 is equal to 100 patients.

**Denominator Exclusions 1**

The Denominator Exclusions 1 criteria identify a subset of the Denominator 1 population by excluding patients who are breastfeeding at any time during the measurement period and patients who have an active diagnosis of rhabdomyolysis at any time during the measurement period. In the sample calculation provided at the end of the eCQM flow, the Denominator Exclusions 1 are equal to 20 patients.

**Numerator 1**

The Numerator 1 criteria identify a subset of the Denominator 1 population (that did not meet the Denominator Exclusions 1 criteria) by including patients who were ordered statin therapy during the measurement period or who were actively taking statin therapy any time during the measurement period. In the sample calculation provided at the end of the eCQM flow, Numerator 1 is equal to 40 patients.

**Denominator Exceptions 1**

The Denominator Exceptions 1 criteria identify patients from the Denominator 1 that did not meet the Denominator Exclusions 1 or Numerator 1 population criteria due to an adverse reaction, such as an

allergy to statin medication at any time during the measurement period, or statin-associated muscle symptoms during the measurement period; or an order for or receiving palliative care or hospice care before the end of the measurement period; or an active diagnosis of hepatitis A, hepatitis B, liver disease, or end-stage renal disease (ESRD) at any time during the measurement period; or documentation of a medical reason for not being prescribed statin therapy. In the sample calculation provided at the end of the eCQM flow, the Denominator Exceptions 1 are equal to 20 patients.

### **Initial Population 2**

Start by identifying the Initial Population 2, which includes patients 20 to 75 years and older with an eligible encounter during the measurement period who have ever had a laboratory result of LDL-C  $\geq 190$  mg/dL or a current or prior diagnosis of familial hypercholesterolemia without a prior or active diagnosis of clinical ASCVD or ever had an ASCVD procedure.

### **Denominator 2**

The Denominator 2 criteria is the same as Initial Population 2. In the sample calculation provided at the end of the eCQM flow, Denominator 2 is equal to 100 patients.

### **Denominator Exclusions 2**

The Denominator Exclusions 2 criteria identify a subset of the Denominator 2 population by excluding patients who are breastfeeding at any time during the measurement period, and patients who have an active diagnosis of rhabdomyolysis at any time during the measurement period. In the sample calculation provided at the end of the eCQM flow, the Denominator Exclusions 2 are equal to 20 patients.

### **Numerator 2**

The Numerator 2 criteria identify a subset of the Denominator 2 population (that did not meet the Denominator Exclusions 2 criteria) by including patients who were ordered statin therapy during the measurement period or who were actively taking statin therapy any time during the measurement period. In the sample calculation provided at the end of the eCQM flow, Numerator 2 is equal to 40 patients.

### **Denominator Exceptions 2**

The Denominator Exceptions 2 criteria identify patients from the Denominator 2 that did not meet the Denominator Exclusions 2 or Numerator 2 population criteria due to an adverse reaction, such as an allergy to statin medication at any time during the measurement period, or statin-associated muscle symptoms during the measurement period; or an order for or receiving palliative care or hospice care before the end of the measurement period; or an active diagnosis of hepatitis A, hepatitis B, liver disease, or end-stage renal disease (ESRD) at any time during the measurement period; or documentation of a medical reason for not being prescribed statin therapy. In the sample calculation provided at the end of the eCQM flow, the Denominator Exceptions 2 are equal to 20 patients.

### **Initial Population 3**

Start by identifying the Initial Population 3, which includes patients aged 40 to 75 years with an eligible encounter during the measurement period with an active diagnosis of Type 1 or Type 2 diabetes without a previous or active diagnosis of clinical ASCVD or ever had an ASCVD procedure, and without a current or prior laboratory result of LDL-C  $\geq 190$  mg/dL, and without a current or prior diagnosis of familial hypercholesterolemia.

### **Denominator 3**

The Denominator 3 criteria is the same as Initial Population 3. In the sample calculation provided at the end of the eCQM flow, Denominator 3 is equal to 100 patients.

**Denominator Exclusions 3**

The Denominator Exclusions 3 criteria identify a subset of the Denominator 3 population by excluding patients who are breastfeeding at any time during the measurement period and patients who have an active diagnosis of rhabdomyolysis at any time during the measurement period. In the sample calculation provided at the end of the eCQM flow, the Denominator Exclusions 3 are equal to 20 patients.

**Numerator 3**

The Numerator 3 criteria identify a subset of the Denominator 3 population (that did not meet the Denominator Exclusions 3 criteria) by including patients who were ordered statin therapy during the measurement period or who were actively taking statin therapy any time during the measurement period. In the sample calculation provided at the end of the eCQM flow, Numerator 3 is equal to 40 patients.

**Denominator Exceptions 3**

The Denominator Exceptions 3 criteria identify patients from the Denominator 3 that did not meet the Denominator Exclusions 3 or Numerator 3 population criteria due to an adverse reaction, such as an allergy to statin medication at any time during the measurement period, or statin-associated muscle symptoms during the measurement period; or an order for or receiving palliative care or hospice care before the end of the measurement period; or an active diagnosis of hepatitis A, hepatitis B, liver disease, or end-stage renal disease (ESRD) at any time during the measurement period; or documentation of a medical reason for not being prescribed statin therapy. In the sample calculation provided at the end of the eCQM flow, the Denominator Exceptions 3 are equal to 20 patients.

**Initial Population 4**

Start by identifying the Initial Population 4, which includes patients aged 40 to 75 years with an eligible encounter during the measurement period with a 10-year ASCVD risk score (i.e., 2013 ACC/AHA ASCVD Risk Estimator or the ACC Risk Estimator Plus) of  $\geq 20$  percent with an active diagnosis of Type 1 or Type 2 diabetes and without a prior or current diagnosis of clinical ASCVD or ever had an ASCVD procedure, and without a laboratory result of LDL-C  $\geq 190$  mg/dL, and without a previously or current diagnosis of familial hypercholesterolemia.

**Denominator 4**

The Denominator 4 criteria is the same as Initial Population 4. In the sample calculation provided at the end of the eCQM flow, Denominator 4 is equal to 100 patients.

**Denominator Exclusions 4**

The Denominator Exclusions 4 criteria identify a subset of the Denominator 4 population by excluding patients who are breastfeeding at any time during the measurement period, and patients who have an active diagnosis of rhabdomyolysis at any time during the measurement period. In the sample calculation provided at the end of the eCQM flow, the Denominator Exclusions 4 are equal to 20 patients.

**Numerator 4**

The Numerator 4 criteria identify a subset of the Denominator 4 population (that did not meet the Denominator Exclusions 4 criteria) by including patients who were ordered statin therapy during the measurement period or who were actively taking statin therapy any time during the measurement period. In the sample calculation provided at the end of the eCQM flow, Numerator 4 is equal to 40 patients.

**Denominator Exceptions 4**

The Denominator Exceptions 4 criteria identify patients from the Denominator 4 that did not meet the Denominator Exclusions 4 or Numerator 4 population criteria due to an adverse reaction, such as an allergy to statin medication at any time during the measurement period, or statin-associated muscle symptoms during the measurement period; or an order for or receiving palliative care or hospice care before the end of the measurement period; or an active diagnosis of hepatitis A, hepatitis B, liver disease, or end-stage renal disease (ESRD) at any time during the measurement period; or documentation of a medical reason for not being prescribed statin therapy. In the sample calculation provided at the end of the eCQM flow, the Denominator Exceptions 4 are equal to 20 patients.

**Sample Calculation**

A sample calculation is provided to help determine how the measure performance rate is derived. The measure performance rate is calculated by summing Numerator 1, Numerator 2, Numerator 3 and Numerator 4 (total equals 160 patients) then dividing by the difference between the sum of the Denominators (Denominator 1, Denominator 2, Denominator 3 and Denominator 4), the sum of the Denominator Exclusions (Denominator Exclusions 1, Denominator Exclusions 2, Dominator Exclusions 3 and Denominator Exclusions 4) and the sum of the Denominator Exceptions (Denominator Exceptions 1, Denominator Exceptions 2, Denominator Exceptions 3 and Denominator Exceptions 4) (total equals 240 patients), which is equal to a score of 67 percent.