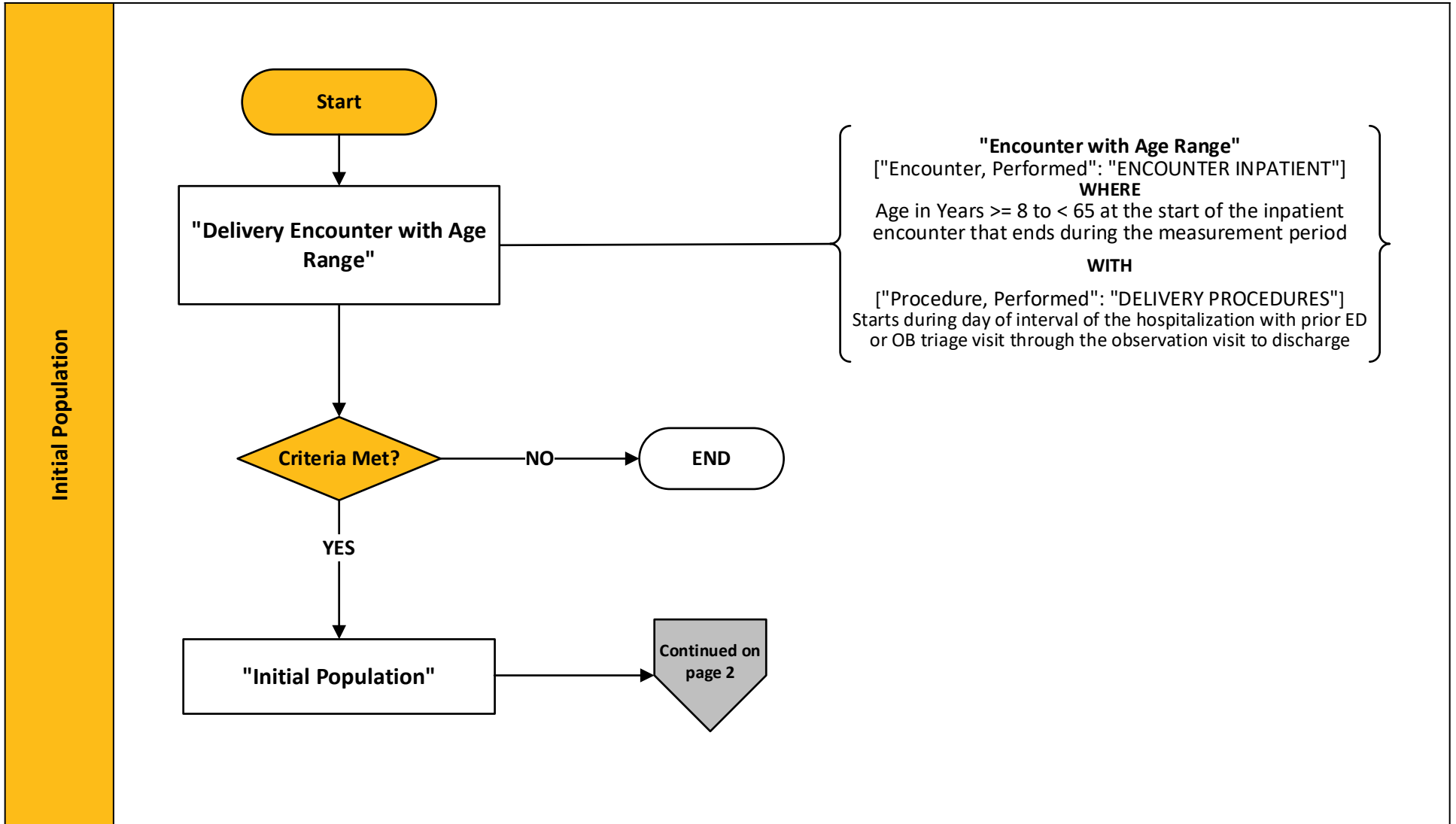


2024 eCQM Flow – CMS334v5: Cesarean Birth (PC-02)*

*This flow diagram represents an overview of population criteria requirements. Please refer to the eCQM measure specification for a complete list of definitions, direct reference codes, data or timing elements included in this measure and required for submission.

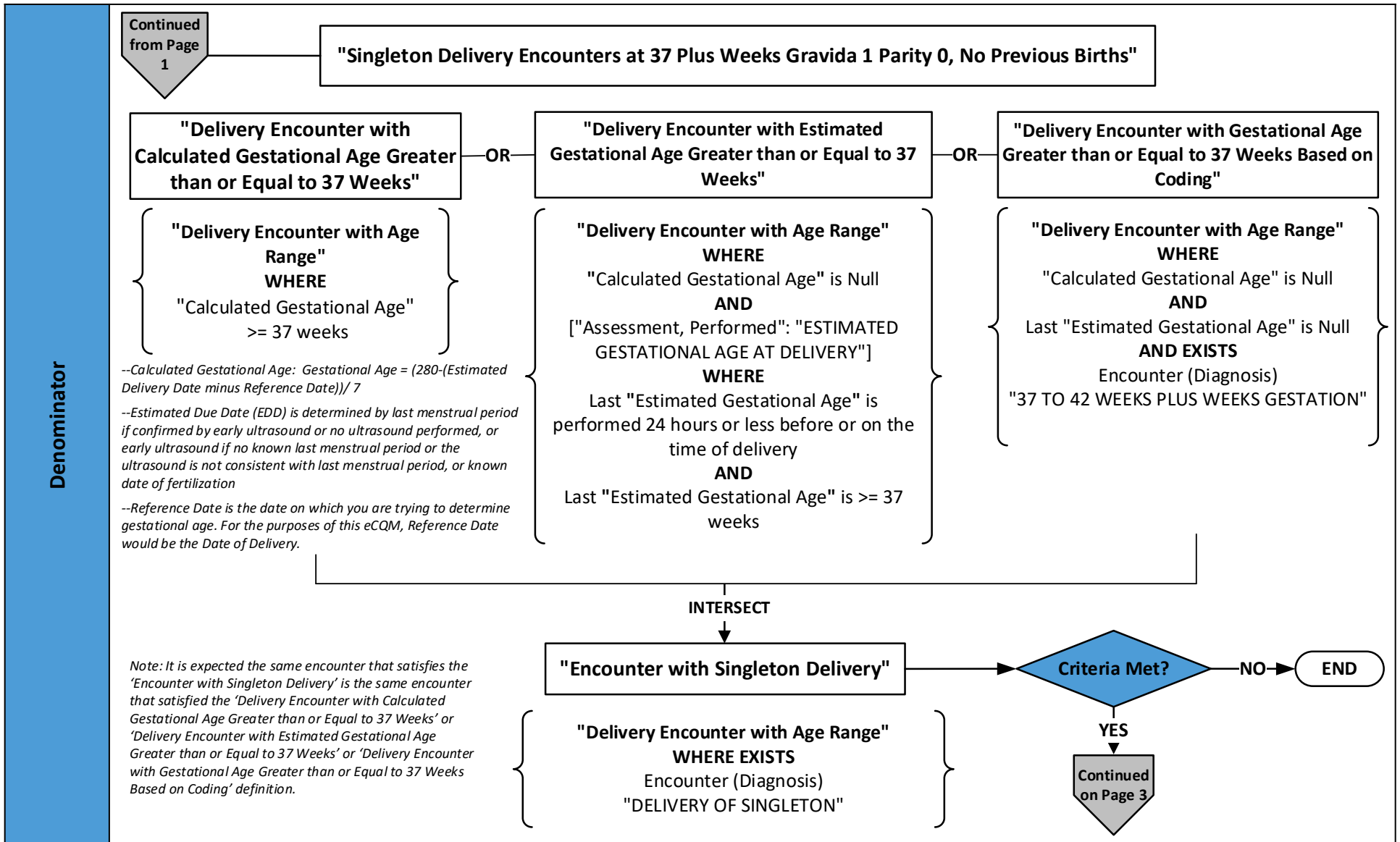
Measure Flow Diagram



2024 eCQM Flow – CMS334v5: Cesarean Birth (PC-02)*

*This flow diagram represents an overview of population criteria requirements. Please refer to the eCQM measure specification for a complete list of definitions, direct reference codes, data or timing elements included in this measure and required for submission.

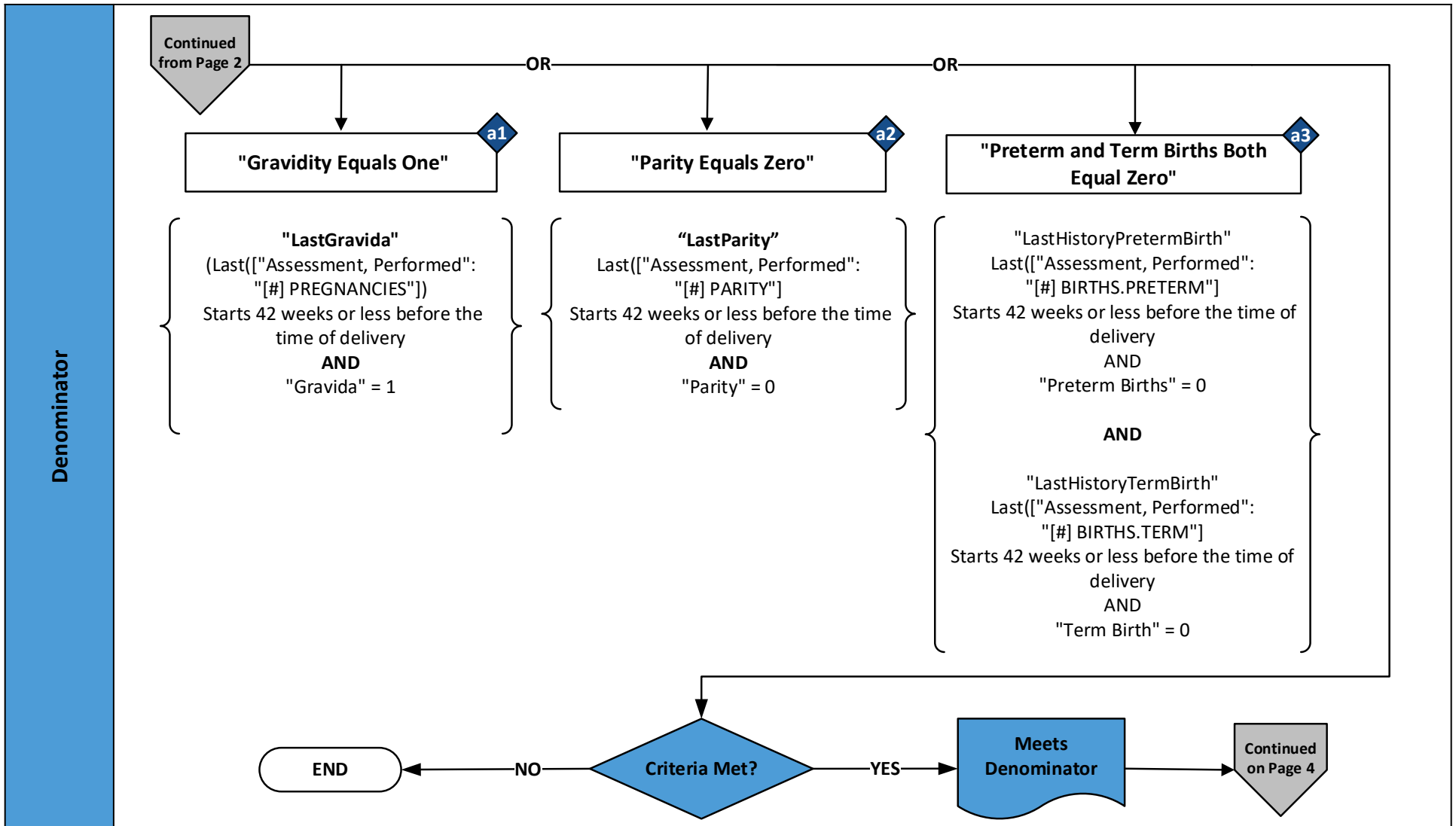
Measure Flow Diagram (Continued)



2024 eCQM Flow – CMS334v5: Cesarean Birth (PC-02)*

*This flow diagram represents an overview of population criteria requirements. Please refer to the eCQM measure specification for a complete list of definitions, direct reference codes, data or timing elements included in this measure and required for submission.

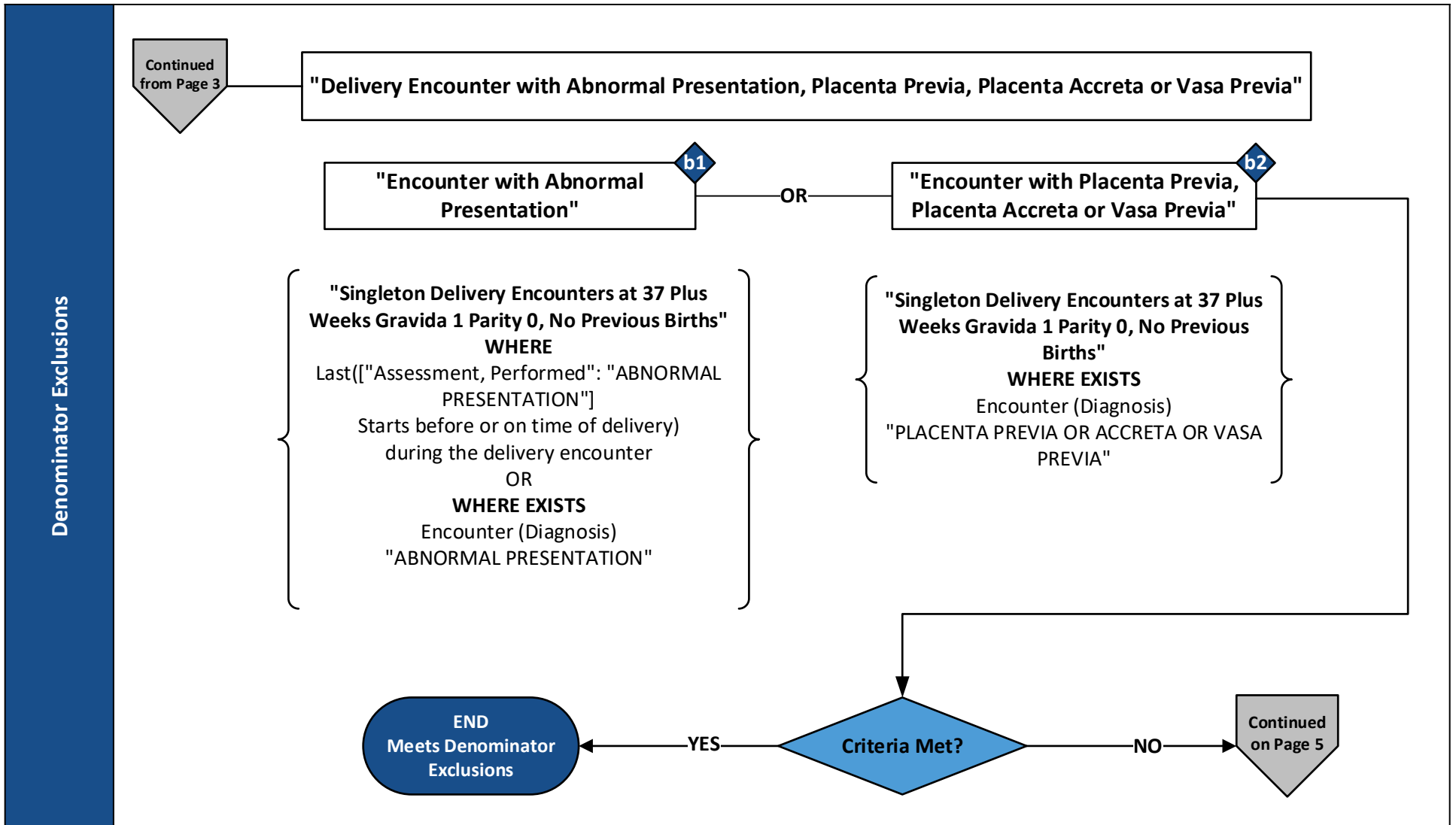
Measure Flow Diagram (Continued)



2024 eCQM Flow – CMS334v5: Cesarean Birth (PC-02)*

*This flow diagram represents an overview of population criteria requirements. Please refer to the eCQM measure specification for a complete list of definitions, direct reference codes, data or timing elements included in this measure and required for submission.

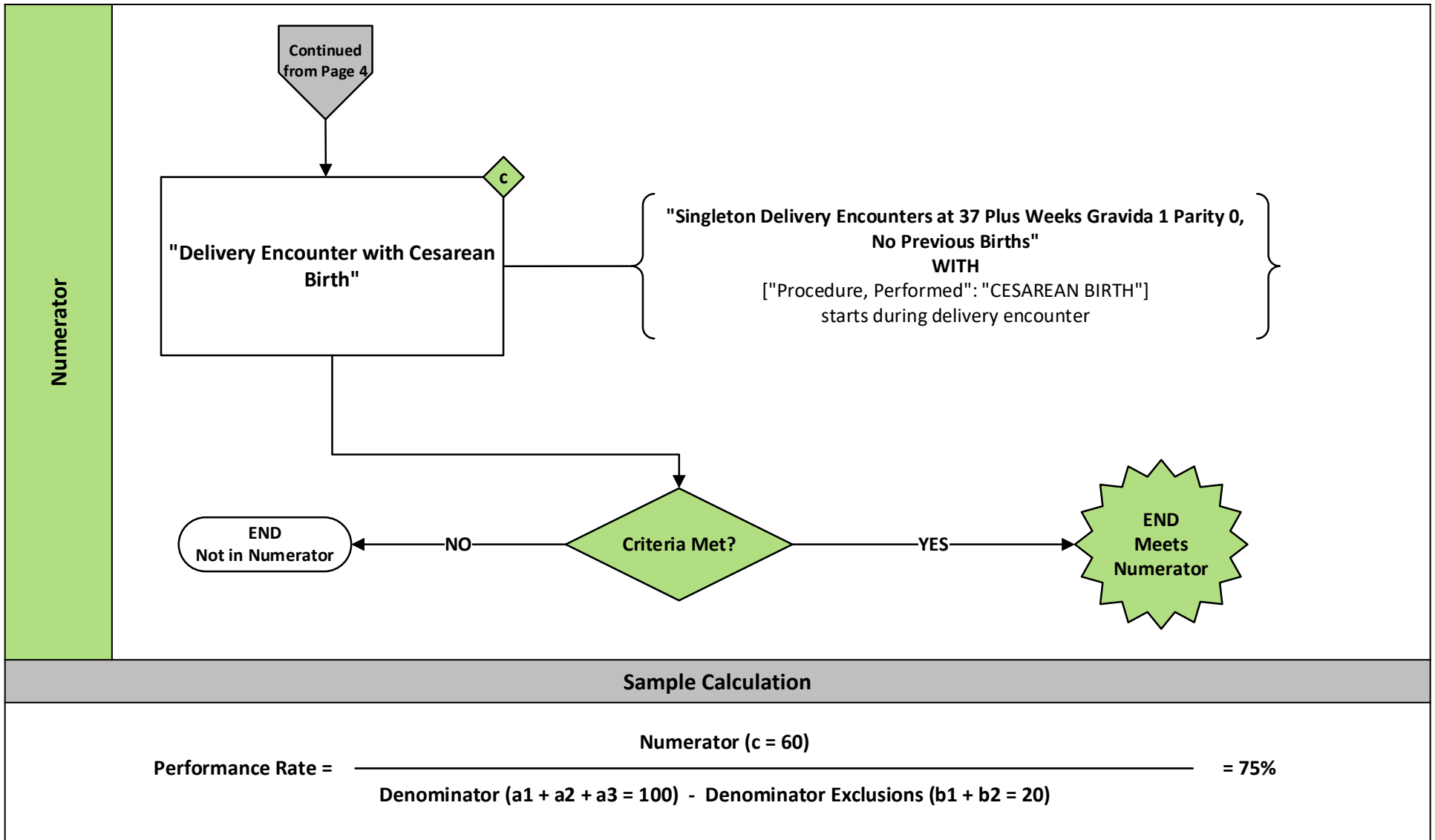
Measure Flow Diagram (Continued)



2024 eCQM Flow – CMS334v5: Cesarean Birth (PC-02)*

*This flow diagram represents an overview of population criteria requirements. Please refer to the eCQM measure specification for a complete list of definitions, direct reference codes, data or timing elements included in this measure and required for submission.

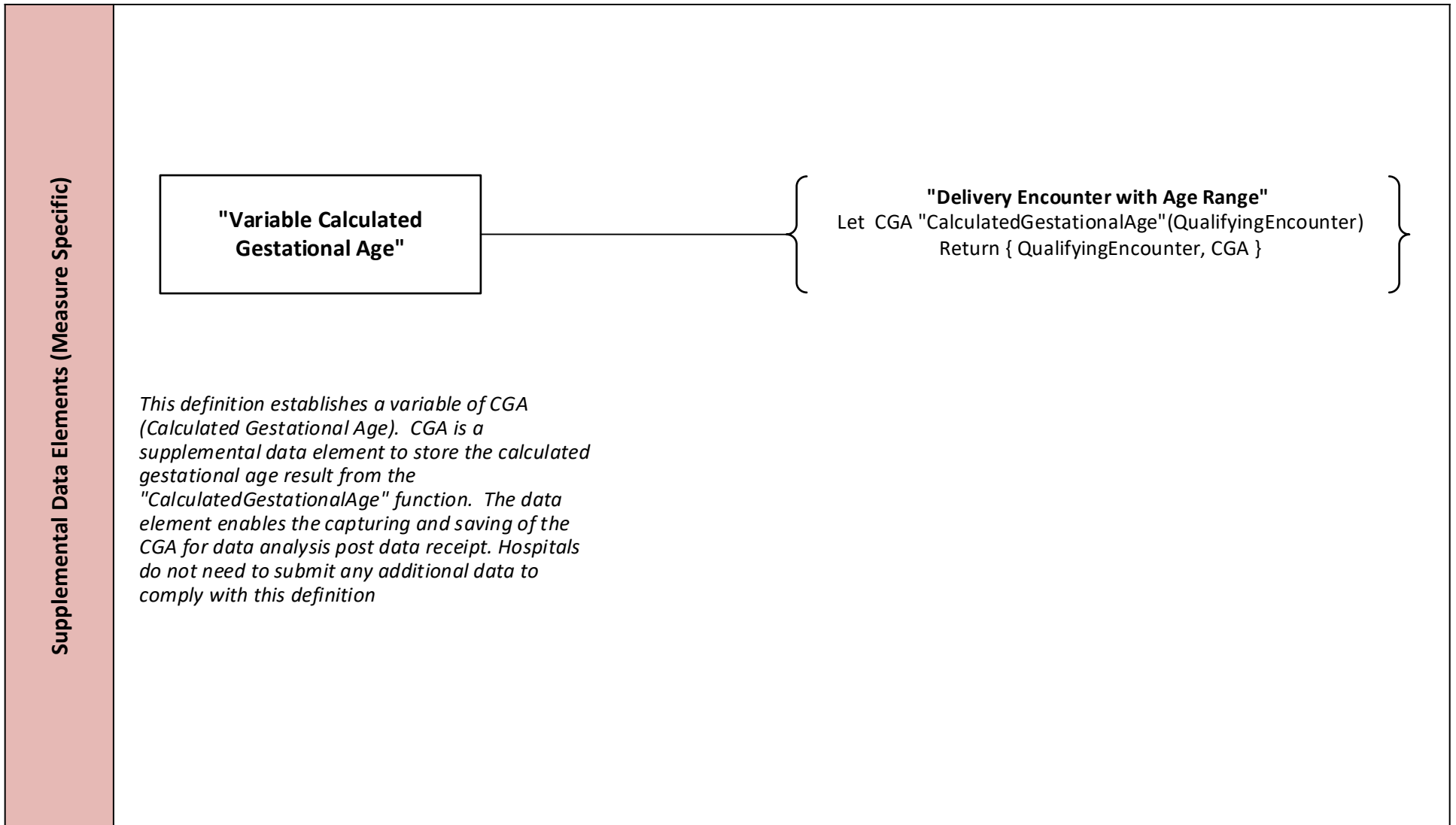
Measure Flow Diagram (Continued)



2024 eCQM Flow – CMS334v5: Cesarean Birth (PC-02)*

*This flow diagram represents an overview of population criteria requirements. Please refer to the eCQM measure specification for a complete list of definitions, direct reference codes, data or timing elements included in this measure and required for submission.

Measure Flow Diagram (Continued)



2024 eCQM Flow – CMS334v5: Cesarean Birth (PC-02)*

**This flow diagram represents an overview of population criteria requirements. Please refer to the eCQM measure specification for a complete list of definitions, direct reference codes, data or timing elements included in this measure and required for submission.*

Measure Flow Narrative

The measure flow diagram on the preceding pages illustrates the steps to determine the population criteria for this measure.

Measure Description	This measure is reported as the rate of nulliparous women with a term, singleton baby in a vertex position delivered by cesarean birth
Initial Population	Inpatient hospitalizations for patients age ≥ 8 years and < 65 admitted to the hospital for inpatient acute care who undergo a delivery procedure with a discharge date that ends during the measurement period
Denominator	Inpatient hospitalizations for nulliparous patients delivered of a live term singleton newborn ≥ 37 weeks' gestation The eCQM logic concludes that a patient is nulliparous when ONE of the following is true: <ol style="list-style-type: none"> 1. Parity equals zero 2. Gravidity equals one 3. Preterm and Term births both equal zero.
Denominator Exclusions	Inpatient hospitalizations for patients with abnormal presentation, placenta previa, placenta accreta or vasa previa during the encounter
Numerator	Inpatient hospitalizations for patients who deliver by cesarean section

2024 eCQM Flow – CMS334v5: Cesarean Birth (PC-02)*

**This flow diagram represents an overview of population criteria requirements. Please refer to the eCQM measure specification for a complete list of definitions, direct reference codes, data or timing elements included in this measure and required for submission.*

Measure Flow Narrative (Continued)

The measure flow diagram on the preceding pages illustrates the steps to determine the population criteria for this measure.

Supplemental Data Elements (Measure Specific)	For every patient evaluated by this measure also identify calculated gestational age.
--	---