

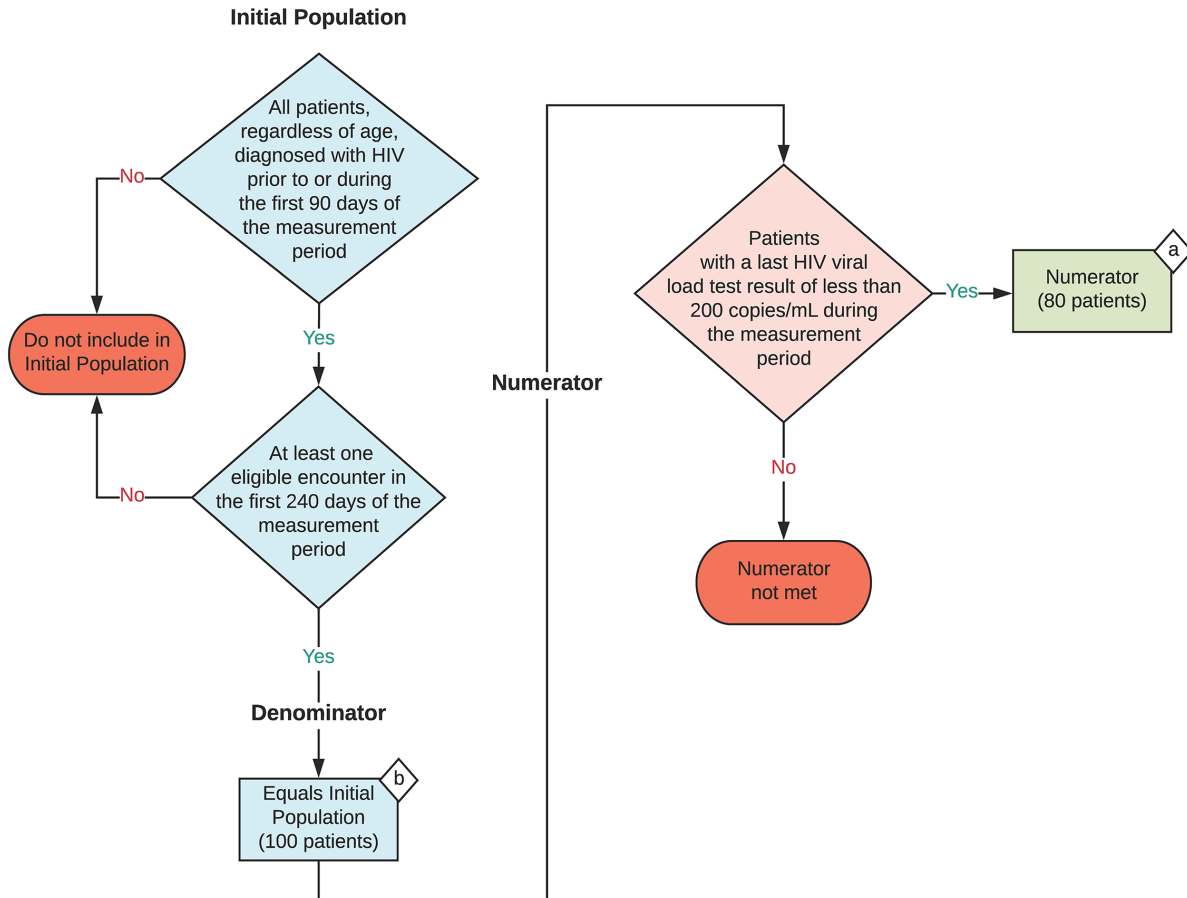
**2024 eCQM Flow**  
**eCQM Identifier: CMS314v1**

**NOTE:** This flow diagram represents an overview of population criteria requirements. Refer to the eCQM specification for a complete list of data elements included in this measure and required for submission.

**HIV Viral Suppression**

Percentage of patients, regardless of age, diagnosed with HIV prior to or during the first 90 days of the measurement period, with an eligible encounter in the first 240 days of the measurement period, whose last HIV viral load test result was less than 200 copies/mL during the measurement period

This eCQM is a patient-based measure



**Sample Calculation**

**Performance Rate =**

$$\frac{\text{Numerator (a = 80 patients)}}{\text{Denominator (b = 100 patients)}} = \frac{80}{100} = 80\%$$

**CQM Identifier: CMS314v1**  
**eCQM Title: HIV Viral Suppression**

**NOTE:** This flow diagram represents an overview of population criteria requirements. Refer to the eCQM specification for a complete list of data elements included in this measure and required for submission.

**Description:** Percentage of patients, regardless of age, diagnosed with HIV prior to or during the first 90 days of the measurement period, with an eligible encounter in the first 240 days of the measurement period, whose last HIV viral load test result was less than 200 copies/mL during the measurement period.

**This eCQM is a patient-based measure.**

**eCQM Flow Narrative**

**Initial Population**

Start by identifying the Initial Population, which includes all patients, regardless of age, diagnosed with HIV prior to or during the first 90 days of the measurement period with at least one eligible encounter in the first 240 days of the measurement period.

**Denominator**

The Denominator equals the Initial Population. In the sample calculation provided at the end of the eCQM flow, the Denominator is equal to 100 patients.

**Numerator**

The Numerator criteria identify a subset of the Denominator by including patients with a last HIV viral load test result of less than 200 copies/mL during the measurement period. In the sample calculation provided at the end of the eCQM flow, the Numerator is equal to 80 patients.

**Sample Calculation**

A sample calculation is provided to help determine how the measure performance rate is derived. The measure performance rate is calculated by dividing the Numerator (total equals 80 patients) by the Denominator (total equals 100 patients), which is equal to a score of 80 percent.