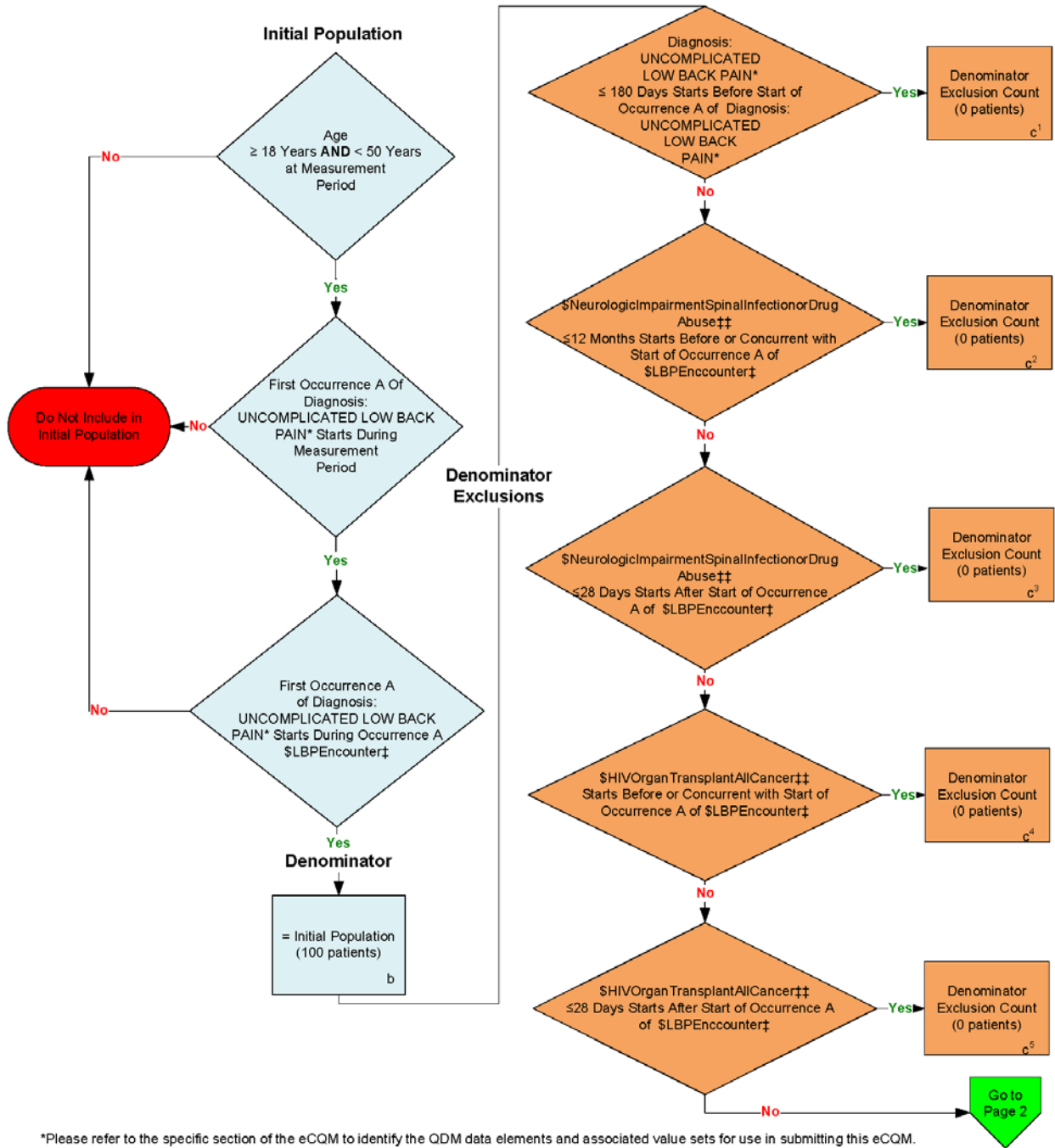
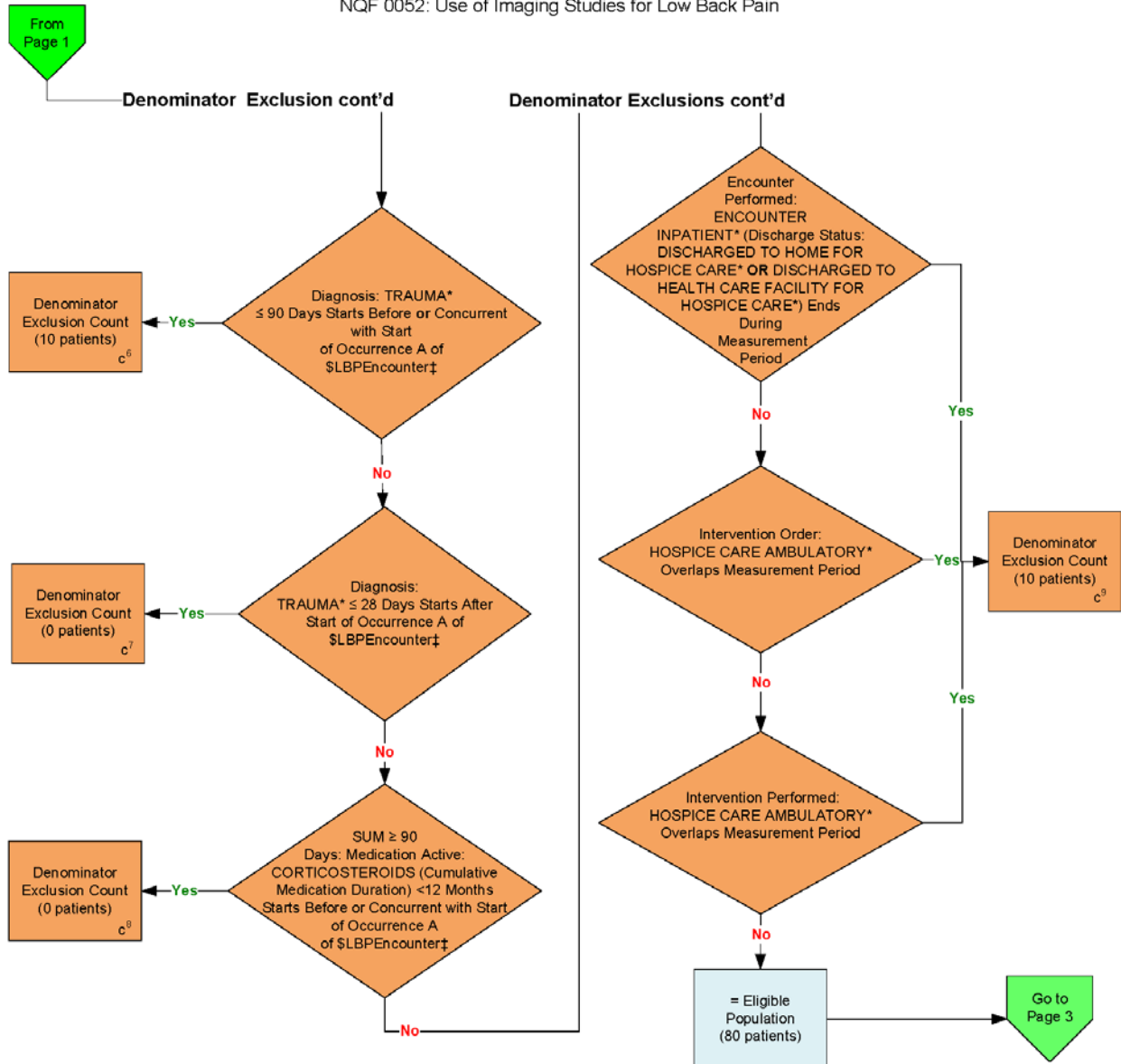


**2018 eCQM Flow**  
**Measure Identifier: CMS166v7**  
 NQF 0052: Use of Imaging Studies for Low Back Pain



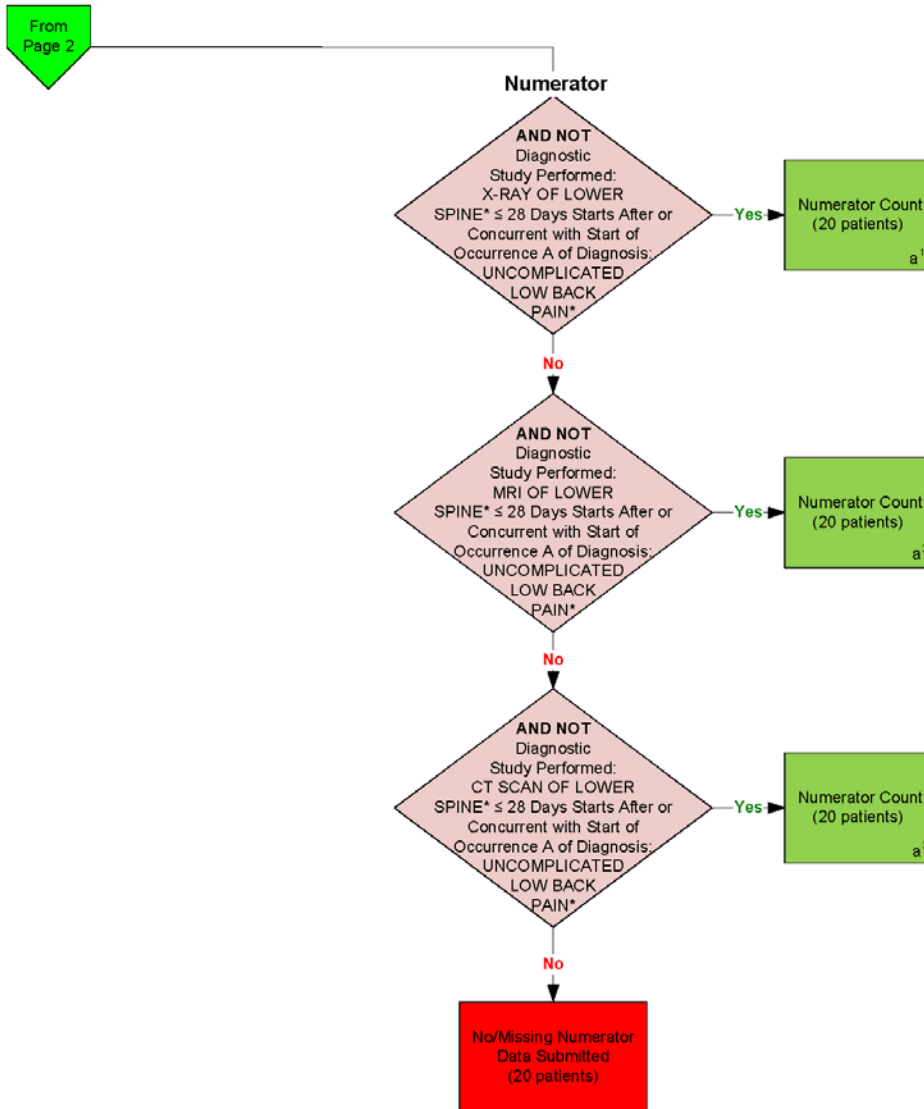
\*Please refer to the specific section of the eCQM to identify the QDM data elements and associated value sets for use in submitting this eCQM.  
 †For a list of appropriate encounters, please refer to the QDM Variables, QDM data elements and associated value sets as specific data elements have not been listed.  
 ‡‡ Please refer to the specific section of the eCQM to identify the QDM Variables, QDM data elements and associated value sets for use in submitting this eCQM.

**2018 eCQM Flow**  
**Measure Identifier: CMS166v7**  
 NQF 0052: Use of Imaging Studies for Low Back Pain



\*Please refer to the specific section of the eCOM to identify the QDM data elements and associated value sets for use in submitting this eCOM.  
 ‡For a list of appropriate encounters, please refer to the QDM Variables, QDM data elements and associated value sets as specific data elements have not been listed.

**2018 eCQM Flow**  
**Measure Identifier: CMS166v7**  
 NQF 0052: Use of Imaging Studies for Low Back Pain



\*Please refer to the specific section of the eCQM to identify the QDM data elements and associated value sets for use in submitting this eCQM.

**SAMPLE CALCULATION:**

**Performance Rate =**  

$$\frac{\text{Numerator } (a^1 + a^2 + a^3 = 60 \text{ patients})}{\text{Denominator } (b=100 \text{ patients}) - \text{Denominator Exclusions } (c^1 + c^2 + c^3 + c^4 + c^5 + c^6 + c^7 + c^8 + c^9 = 20 \text{ patients}) - \text{Denominator Exceptions } (N/A)} = 75.00\%$$

**2018 eCQM Flows**  
**Measure Identifier: CMS166v7**  
**NQF 0052: Use of Imaging Studies for Low Back Pain**

Please refer to the specific section of the eCQM to identify the Population Criteria and associated value sets for use in submitting this eCQM.

1. Start Initial Population
2. Check Age:
  - a. If the AGE is greater than or equal to 18 years AND less than 50 years at measurement period equals No, do not include in Initial Population. Stop Processing.
  - b. If the AGE is greater than or equal to 18 years AND less than 50 years at measurement period equals Yes, proceed to First Occurrence A of Diagnosis.
3. Check First Occurrence A of Diagnosis:
  - a. If First Occurrence A of Diagnosis QDM data element, UNCOMPLICATED LOW BACK PAIN, starts during measurement period equals Yes, proceed to check First Occurrence A of Diagnosis.
  - b. If First Occurrence A of Diagnosis QDM data element, UNCOMPLICATED LOW BACK PAIN, starts during measurement period equals No, do not include in the Initial Population. Stop Processing.
4. Check Occurrence A of Diagnosis:
  - a. If Occurrence A of Diagnosis QDM data element, UNCOMPLICATED LOW BACK PAIN, starts during Occurrence A \$LBPEncounter: Encounter Performed QDM data element, OFFICE VISIT, less than or equal to 337 days starts after start of measurement period equals Yes, include in the Initial Population and continue on to the Denominator Exclusion.
  - b. If Occurrence A of Diagnosis QDM data element, UNCOMPLICATED LOW BACK PAIN, starts during Occurrence A \$LBPEncounter: Encounter Performed QDM data element, OFFICE VISIT, less than or equal to 337 days starts after start of measurement period equals No, proceed to check next Occurrence A of Diagnosis.
  - c. If Occurrence A of Diagnosis QDM data element, UNCOMPLICATED LOW BACK PAIN, starts during Occurrence A \$LBPEncounter: Encounter Performed QDM data element, EMERGENCY DEPARTMENT VISIT, less than or equal to 337 days starts after start of measurement period equals Yes, include in the Initial Population and continue on to the Denominator Exclusion
  - d. If Occurrence A of Diagnosis QDM data element, UNCOMPLICATED LOW BACK PAIN, starts during Occurrence A \$LBPEncounter: Encounter Performed QDM data element, EMERGENCY DEPARTMENT VISIT, less than or equal to 337 days starts after start of measurement period equals No, proceed to check next Occurrence A of Diagnosis.
  - e. If Occurrence A of Diagnosis QDM data element, UNCOMPLICATED LOW BACK PAIN, starts during Occurrence A \$LBPEncounter: Encounter Performed QDM data element, FACE-TO-FACE INTERACTION, less than or equal to 337 days starts after start of measurement period equals Yes, include in the Initial Population and continue on to the Denominator Exclusion.
  - f. If Occurrence A of Diagnosis QDM data element, UNCOMPLICATED LOW BACK PAIN, starts during Occurrence A \$LBPEncounter: Encounter Performed QDM data element, FACE-TO-FACE INTERACTION, less than or equal to 337 days starts after start of measurement period equals No, do not include in the Initial Population. Stop Processing.

- g. If Occurrence A of Diagnosis QDM data element, UNCOMPLICATED LOW BACK PAIN, starts during Occurrence A \$LBPEncounter: Encounter Performed QDM data element, TELEHEALTH SERVICES, less than or equal to 337 days starts after start of measurement period equals Yes, include in the Initial Population and continue on to the Denominator Exclusion.
  - h. If Occurrence A of Diagnosis QDM data element, UNCOMPLICATED LOW BACK PAIN, starts during Occurrence A \$LBPEncounter: Encounter Performed QDM data element, TELEHEALTH SERVICES, less than or equal to 337 days starts after start of measurement period equals No, do not include in the Initial Population. Stop Processing.
  - i. If Occurrence A of Diagnosis QDM data element, UNCOMPLICATED LOW BACK PAIN, starts during Occurrence A \$LBPEncounter: Encounter Performed QDM data element, PHYSICAL THERAPY, less than or equal to 337 days starts after start of measurement period equals Yes, include in the Initial Population and continue on to the Denominator Exclusion.
  - j. If Occurrence A of Diagnosis QDM data element, UNCOMPLICATED LOW BACK PAIN, starts during Occurrence A \$LBPEncounter: Encounter Performed QDM data element, PHYSICAL THERAPY, less than or equal to 337 days starts after start of measurement period equals No, do not include in the Initial Population. Stop Processing.
  - k. If Occurrence A of Diagnosis QDM data element, UNCOMPLICATED LOW BACK PAIN, starts during Occurrence A \$LBPEncounter: Encounter Performed QDM data element, OSTEOPATHIC OR CHIROPRACTICE MANIPULATIVE TREATMENT, less than or equal to 337 days starts after start of measurement period equals Yes, include in the Initial Population and continue on to the Denominator Exclusion.
  - l. If Occurrence A of Diagnosis QDM data element, UNCOMPLICATED LOW BACK PAIN, starts during Occurrence A \$LBPEncounter: Encounter Performed QDM data element, OSTEOPATHIC OR CHIROPRACTICE MANIPULATIVE TREATMENT, less than or equal to 337 days starts after start of measurement period equals No, do not include in the Initial Population. Stop Processing.
5. Start Denominator
- a. Denominator equals the Initial Population. Denominator is represented by Letter b in the sample calculation listed at the end of this document. Letter b equals 100 patients in the sample calculation.
6. Start Denominator Exclusions
7. Check Diagnosis:
- a. If the Diagnosis QDM data element, UNCOMPLICATED LOW BACK PAIN, less than or equal to 180 days starts before start of Occurrence A of Diagnosis QDM data element, UNCOMPLICATED LOW BACK PAIN equals Yes, include in Denominator Exclusions count. Denominator Exclusion is represented by Letter c<sup>1</sup> in the sample calculation listed at the end of this document. Letter c<sup>1</sup> equals 0 patients in the sample calculation.
  - b. If the Diagnosis QDM data element, UNCOMPLICATED LOW BACK PAIN, less than or equal to 180 days starts before start of Occurrence A of Diagnosis QDM data element, UNCOMPLICATED LOW BACK PAIN equals No, proceed to check \$NeurologicImpairmentSpinalInfectionorDrugAbuse.
8. Check \$NeurologicImpairmentSpinalInfectionorDrugAbuse:
- a. If the \$NeurologicImpairmentSpinalInfectionorDrugAbuse: Diagnosis QDM data element, IV DRUG ABUSE, or QDM data element, NEUROLOGIC IMPAIRMENT, or QDM data element, SPINAL INFECTION less than or equal to 12 months starts before or concurrent with start of Occurrence A \$LBPEncounter (Encounter Performed QDM data element, OFFICE VISIT, OR QDM data element,

EMERGENCY DEPARTMENT VISIT, or QDM data element, FACE-TO-FACE INTERACTION, or QDM data element, TELEHEALTH SERVICES, or QDM data element, PHYSICAL THERAPY, or QDM data element, OSTEOPATHIC OR CHIROPRACTICE MANIPULATIVE TREATMENT, less than or equal to 337 days starts after start of measurement period) equals Yes, include in Denominator Exclusions count. Denominator Exclusion is represented by Letter c<sup>2</sup> in the sample calculation listed at the end of this document. Letter c<sup>2</sup> equals 0 patients in the sample calculation.

- b. If the \$NeurologicImpairmentSpinalInfectionorDrugAbuse: Diagnosis QDM data element, IV DRUG ABUSE, or QDM data element, NEUROLOGIC IMPAIRMENT, or QDM data element, SPINAL INFECTION less than or equal to 12 months starts before or concurrent with start of Occurrence A \$LBPEncounter (Encounter Performed QDM data element, OFFICE VISIT, OR QDM data element, EMERGENCY DEPARTMENT VISIT, or QDM data element, FACE-TO-FACE INTERACTION, or QDM data element, TELEHEALTH SERVICES, or QDM data element, PHYSICAL THERAPY, or QDM data element, OSTEOPATHIC OR CHIROPRACTICE MANIPULATIVE TREATMENT, less than or equal to 337 days starts after start of measurement period) equals No, proceed to check next \$NeurologicImpairmentSpinalInfectionorDrugAbuse.

9. Check \$NeurologicImpairmentSpinalInfectionorDrugAbuse:

- a. If the \$NeurologicImpairmentSpinalInfectionorDrugAbuse: Diagnosis QDM data element, IV DRUG ABUSE, or QDM data element, NEUROLOGIC IMPAIRMENT, or QDM data element, SPINAL INFECTION less than or equal to 28 days starts after start of Occurrence A \$LBPEncounter (Encounter Performed QDM data element, OFFICE VISIT, OR QDM data element, EMERGENCY DEPARTMENT VISIT, or QDM data element, FACE-TO-FACE INTERACTION, or QDM data element, TELEHEALTH SERVICES, or QDM data element, PHYSICAL THERAPY, or QDM data element, OSTEOPATHIC OR CHIROPRACTICE MANIPULATIVE TREATMENT, less than or equal to 337 days starts after start of measurement period) equals Yes, include in Denominator Exclusions count. Denominator Exclusion is represented by Letter c<sup>3</sup> in the sample calculation listed at the end of this document. Letter c<sup>3</sup> equals 0 patients in the sample calculation.
- b. If the \$NeurologicImpairmentSpinalInfectionorDrugAbuse: Diagnosis QDM data element, IV DRUG ABUSE, or QDM data element, NEUROLOGIC IMPAIRMENT, or QDM data element, SPINAL INFECTION less than or equal to 28 days starts after start of Occurrence A \$LBPEncounter (Encounter Performed QDM data element, OFFICE VISIT, OR QDM data element, EMERGENCY DEPARTMENT VISIT, or QDM data element, FACE-TO-FACE INTERACTION, or QDM data element, TELEHEALTH SERVICES, or QDM data element, PHYSICAL THERAPY, or QDM data element, OSTEOPATHIC OR CHIROPRACTICE MANIPULATIVE TREATMENT, less than or equal to 337 days starts after start of measurement period) equals No, proceed to check next \$HIVOrganTransplantAllCancer.

10. Check \$HIVOrganTransplantAllCancer:

- a. If \$HIVOrganTransplantAllCancer: Diagnosis, QDM data element, ALL CANCER, or QDM data element, HIV or Procedure Performed, QDM data element, MAJOR ORGAN TRANSPLANT OTHER THAN KIDNEY or Procedure Performed, QDM data element, KIDNEY TRANSPLANT, starts before or concurrent with start of Occurrence A of \$LBPEncounter (Encounter Performed QDM data element, OFFICE VISIT, OR QDM data element, EMERGENCY DEPARTMENT VISIT, or QDM data element, FACE-TO-FACE INTERACTION, or QDM data element, TELEHEALTH SERVICES, or QDM data element, PHYSICAL THERAPY, or QDM data element, OSTEOPATHIC OR CHIROPRACTICE MANIPULATIVE TREATMENT, less than or equal to 337 days starts after start of measurement period) equals Yes, include in Denominator Exclusions count. Denominator Exclusion is represented by Letter c<sup>4</sup> in the sample calculation listed at the end of this document. Letter c<sup>4</sup> equals 0 patients in the sample calculation.

- b. If \$HIVOrganTransplantAllCancer: Diagnosis, QDM data element, ALL CANCER, or QDM data element, HIV or Procedure Performed, QDM data element, MAJOR ORGAN TRANSPLANT OTHER THAN KIDNEY or Procedure Performed, QDM data element, KIDNEY TRANSPLANT, starts before or concurrent with start of Occurrence A of \$LBPEncounter (Encounter Performed QDM data element, OFFICE VISIT, OR QDM data element, EMERGENCY DEPARTMENT VISIT, or QDM data element, FACE-TO-FACE INTERACTION, or QDM data element, TELEHEALTH SERVICES, or QDM data element, PHYSICAL THERAPY, or QDM data element, OSTEOPATHIC OR CHIROPRACTICE MANIPULATIVE TREATMEN, less than or equal to 337 days starts after start of measurement period) equals No, proceed to check next \$HIVOrganTransplantAllCancer.

11. Check \$HIVOrganTransplantAllCancer:

- a. If \$HIVOrganTransplantAllCancer: Diagnosis, QDM data element, ALL CANCER, or QDM data element, HIV or Procedure Performed, QDM data element, MAJOR ORGAN TRANSPLANT OTHER THAN KIDNEY or Procedure Performed, QDM data element, KIDNEY TRANSPLANT, less than or equal to 28 days starts after start of Occurrence A of \$LBPEncounter (Encounter Performed QDM data element, OFFICE VISIT, OR QDM data element, EMERGENCY DEPARTMENT VISIT, or QDM data element, FACE-TO-FACE INTERACTION, or QDM data element, TELEHEALTH SERVICES, or QDM data element, PHYSICAL THERAPY, or QDM data element, OSTEOPATHIC OR CHIROPRACTICE MANIPULATIVE TREATMEN, less than or equal to 337 days starts after start of measurement period) equals Yes, include in Denominator Exclusions count. Denominator Exclusion is represented by Letter c<sup>5</sup> in the sample calculation listed at the end of this document. Letter c<sup>5</sup> equals 0 patients in the sample calculation.
- b. If \$HIVOrganTransplantAllCancer: Diagnosis, QDM data element, ALL CANCER, or QDM data element, HIV or Procedure Performed, QDM data element, MAJOR ORGAN TRANSPLANT OTHER THAN KIDNEY or Procedure Performed, QDM data element, KIDNEY TRANSPLANT, less than or equal to 28 days starts after start of Occurrence A of \$LBPEncounter (Encounter Performed QDM data element, OFFICE VISIT, OR QDM data element, EMERGENCY DEPARTMENT VISIT, or QDM data element, FACE-TO-FACE INTERACTION, or QDM data element, TELEHEALTH SERVICES, or QDM data element, PHYSICAL THERAPY, or QDM data element, OSTEOPATHIC OR CHIROPRACTICE MANIPULATIVE TREATMEN, less than or equal to 337 days starts after start of measurement period) equals No, proceed to check Diagnosis.

12. Check Diagnosis:

- a. If Diagnosis: QDM data element, TRAUMA, less than or equal to 90 days starts before or concurrent with start of Occurrence A of \$LBPEncounter (Encounter Performed QDM data element, OFFICE VISIT, OR QDM data element, EMERGENCY DEPARTMENT VISIT, or QDM data element, FACE-TO-FACE INTERACTION, or QDM data element, TELEHEALTH SERVICES, or QDM data element, PHYSICAL THERAPY, or QDM data element, OSTEOPATHIC OR CHIROPRACTICE MANIPULATIVE TREATMEN, less than or equal to 337 days starts after start of measurement period) equals Yes, include in Denominator Exclusions count. Denominator Exclusion is represented by Letter c<sup>6</sup> in the sample calculation listed at the end of this document. Letter c<sup>6</sup> equals 10 patients in the sample calculation.
- b. If Diagnosis: QDM data element, TRAUMA, less than or equal to 90 days starts before or concurrent with start of Occurrence A of \$LBPEncounter (Encounter Performed QDM data element, OFFICE VISIT, OR QDM data element, EMERGENCY DEPARTMENT VISIT, or QDM data element, FACE-TO-FACE INTERACTION, or QDM data element, TELEHEALTH SERVICES, or QDM data element, PHYSICAL THERAPY, or QDM data element, OSTEOPATHIC OR CHIROPRACTICE MANIPULATIVE TREATMEN, less than or equal to 337 days starts after start of measurement period) equals No, proceed to check next diagnosis.

13. Check Diagnosis:

- a. If Diagnosis: QDM data element, TRAUMA, less than or equal to 28 days starts after start of Occurrence A of \$LBPEncounter (Encounter Performed QDM data element, OFFICE VISIT, OR QDM data element, EMERGENCY DEPARTMENT VISIT, or QDM data element, FACE-TO-FACE INTERACTION, or QDM data element, TELEHEALTH SERVICES, or QDM data element, PHYSICAL THERAPY, or QDM data element, OSTEOPATHIC OR CHIROPRACTICE MANIPULATIVE TREATMEN, less than or equal to 337 days starts after start of measurement period) equals Yes, include in Denominator Exclusions count. Denominator Exclusion is represented by Letter c<sup>7</sup> in the sample calculation listed at the end of this document. Letter c<sup>7</sup> equals 0 patients in the sample calculation.
  - b. If Diagnosis: QDM data element, TRAUMA, less than or equal to 28 days starts after start of Occurrence A of \$LBPEncounter (Encounter Performed QDM data element, OFFICE VISIT, OR QDM data element, EMERGENCY DEPARTMENT VISIT, or QDM data element, FACE-TO-FACE INTERACTION, or QDM data element, TELEHEALTH SERVICES, or QDM data element, PHYSICAL THERAPY, or QDM data element, OSTEOPATHIC OR CHIROPRACTICE MANIPULATIVE TREATMEN, less than or equal to 337 days starts after start of measurement period) equals No, proceed to check next Medication Active.
14. Check Medication Active (Sum greater than or equal to 90 days):
- a. If Medication Active, QDM data element, CORTICOSTERIODS, (Sum greater than of equal to 90 days), (cumulative medication duration) less than 12 months starts before or concurrent with start of Occurrence A of \$LBPEncounter (Encounter Performed QDM data element, OFFICE VISIT, OR QDM data element, EMERGENCY DEPARTMENT VISIT, or QDM data element, FACE-TO-FACE INTERACTION, or QDM data element, TELEHEALTH SERVICES, or QDM data element, PHYSICAL THERAPY, or QDM data element, OSTEOPATHIC OR CHIROPRACTICE MANIPULATIVE TREATMEN, less than or equal to 337 days starts after start of measurement period) equals Yes, include in Denominator Exclusions count. Denominator Exclusion is represented by Letter c<sup>8</sup> in the sample calculation listed at the end of this document. Letter c<sup>8</sup> equals 0 patients in the sample calculation.
  - b. If Medication Active, QDM data element, CORTICOSTERIODS, (Sum greater than of equal to 90 days), (cumulative medication duration) less than 12 months starts before or concurrent with start of Occurrence A of \$LBPEncounter (Encounter Performed QDM data element, OFFICE VISIT, OR QDM data element, EMERGENCY DEPARTMENT VISIT, or QDM data element, FACE-TO-FACE INTERACTION, or QDM data element, TELEHEALTH SERVICES, or QDM data element, PHYSICAL THERAPY, or QDM data element, OSTEOPATHIC OR CHIROPRACTICE MANIPULATIVE TREATMEN, less than or equal to 337 days starts after start of measurement period) equals No, proceed to next Encounter Performed.
15. Check Encounter, Performed:
- a. If Encounter, Performed, QDM data element, ENCOUNTER INPATIENT (Discharge Status: DISCHARGED TO HOME FOR HOSPICE CARE OR Discharge status: DISCHARGED TO HEALTH CARE FACILITY FOR HOSPICE CARE) ends during measurement period equals Yes, include in the Denominator Exclusion count. Denominator Exclusion is Letter c<sup>9</sup> in the sample calculation listed at the end of this document. Letter c<sup>9</sup> equals 10 patients in the sample calculation.
  - b. If Encounter, Performed, QDM data element, ENCOUNTER INPATIENT (Discharge Status: DISCHARGED TO HOME FOR HOSPICE CARE OR Discharge status: DISCHARGED TO HEALTH CARE FACILITY FOR HOSPICE CARE) ends during measurement period equals No, proceed to next Denominator Exclusion.
16. Check Interventional Order:
- a. If Intervention Order QDM data element, HOSPICE CARE AMBULATORY, overlaps measurement period and equals Yes, include in the Denominator Exclusion count. Denominator Exclusion is Letter c<sup>9</sup> in the sample calculation listed at the end of this document. Letter c<sup>9</sup> equals 10 patients in the sample calculation.



- b. If Intervention Order QDM data element, HOSPICE CARE AMBULATORY, overlaps measurement period and equals No, proceed to next Denominator Exclusion.
17. Check Intervention Performed:
- a. If Intervention Performed QDM data element, HOSPICE CARE AMBULATORY, overlaps measurement period and equals Yes, include in the Denominator Exclusion count. Denominator Exclusion is Letter c<sup>9</sup> in the sample calculation listed at the end of this document. Letter c<sup>9</sup> equals 10 patients in the sample calculation.
  - b. If Intervention Performed QDM data element, HOSPICE CARE AMBULATORY, overlaps measurement period and equals No, proceed to Numerator.
18. Start Numerator
19. Check AND NOT Diagnostic Study Performed:
- a. If AND NOT Diagnostic Study Performed QDM data element, X-RAY OF LOWER SPINE, less than or equal to 28 days starts after or concurrent with start of Occurrence A of Diagnosis, QDM data element, UNCOMPLICATED LOW BACK PAIN equals Yes, include in Numerator Count. Numerator is represented by Letter a<sup>1</sup> in the sample calculation listed at the end of this document. Letter a<sup>1</sup> equals 20 patients in the sample calculation.
  - b. If AND NOT Diagnostic Study Performed QDM data element, X-RAY OF LOWER SPINE, less than or equal to 28 days starts after or concurrent with start of Occurrence A of Diagnosis, QDM data element, UNCOMPLICATED LOW BACK PAIN equals No, proceed to check next AND NOT Diagnostic Study Performed.
20. Check AND NOT Diagnostic Study Performed:
- a. If AND NOT Diagnostic Study Performed QDM data element, MRI OF LOWER SPINE, less than or equal to 28 days starts after or concurrent with start of Occurrence A of Diagnosis, QDM data element, UNCOMPLICATED LOW BACK PAIN equals Yes, include in Numerator Count. Numerator is represented by Letter a<sup>2</sup> in the sample calculation listed at the end of this document. Letter a<sup>2</sup> equals 20 patients in the sample calculation.
  - b. If AND NOT Diagnostic Study Performed QDM data element, MRI OF LOWER SPINE, less than or equal to 28 days starts after or concurrent with start of Occurrence A of Diagnosis, QDM data element, UNCOMPLICATED LOW BACK PAIN equals No, proceed to check next AND NOT Diagnostic Study Performed.
21. Check AND NOT Diagnostic Study Performed:
- a. If AND NOT Diagnostic Study Performed QDM data element, CT SCAN OF LOWER SPINE, less than or equal to 28 days starts after or concurrent with start of Occurrence A of Diagnosis, QDM data element, UNCOMPLICATED LOW BACK PAIN, equals Yes, include in Numerator Count. Numerator is represented by Letter a<sup>3</sup> in the sample calculation listed at the end of this document. Letter a<sup>3</sup> equals 20 patients in the sample calculation.
  - b. If AND NOT Diagnostic Study Performed QDM data element, CT SCAN OF LOWER SPINE, less than or equal to 28 days starts after or concurrent with start of Occurrence A of Diagnosis, QDM data element, UNCOMPLICATED LOW BACK PAIN, equals No, include in the No/Missing Data Submitted count. Stop Processing.

**SAMPLE CALCULATION:**

**Performance Rate =**

$$\frac{\text{Numerator } (a^1 + a^2 + a^3 = 60 \text{ patients})}{\text{Denominator } (b=100 \text{ patients}) - \text{Denominator Exclusions } (c^1 + c^2 + c^3 + c^4 + c^5 + c^6 + c^7 + c^8 + c^9 = 20 \text{ patients}) - \text{Denominator Exceptions } (N/A)} = 75.00\%$$