

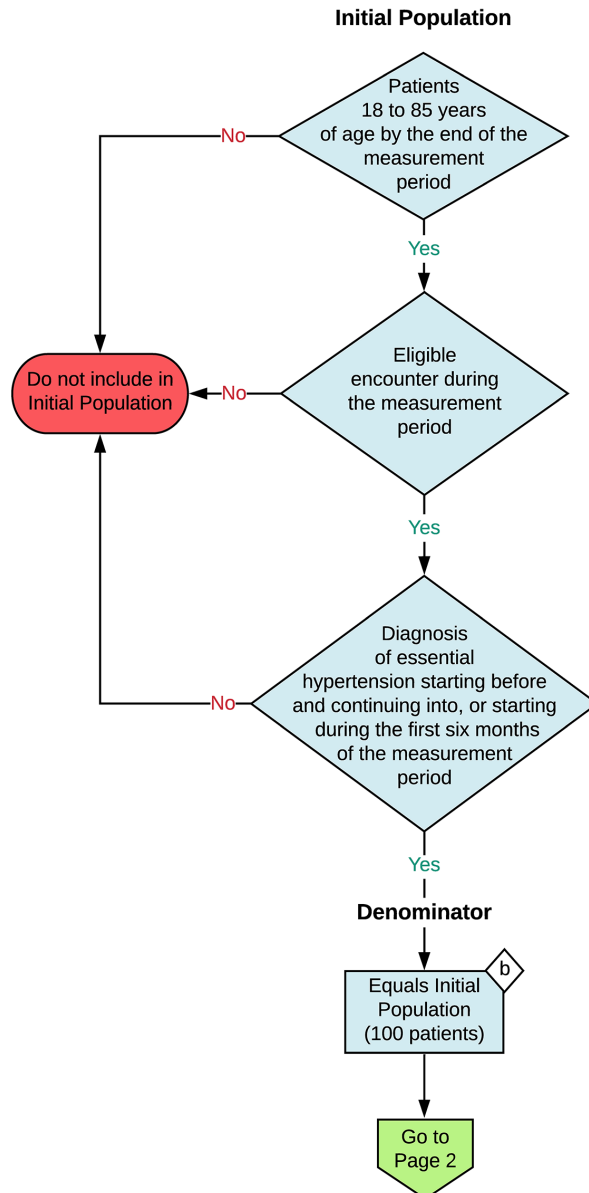
**2023 eCQM Flow**  
**eCQM Identifier: CMS165v11**

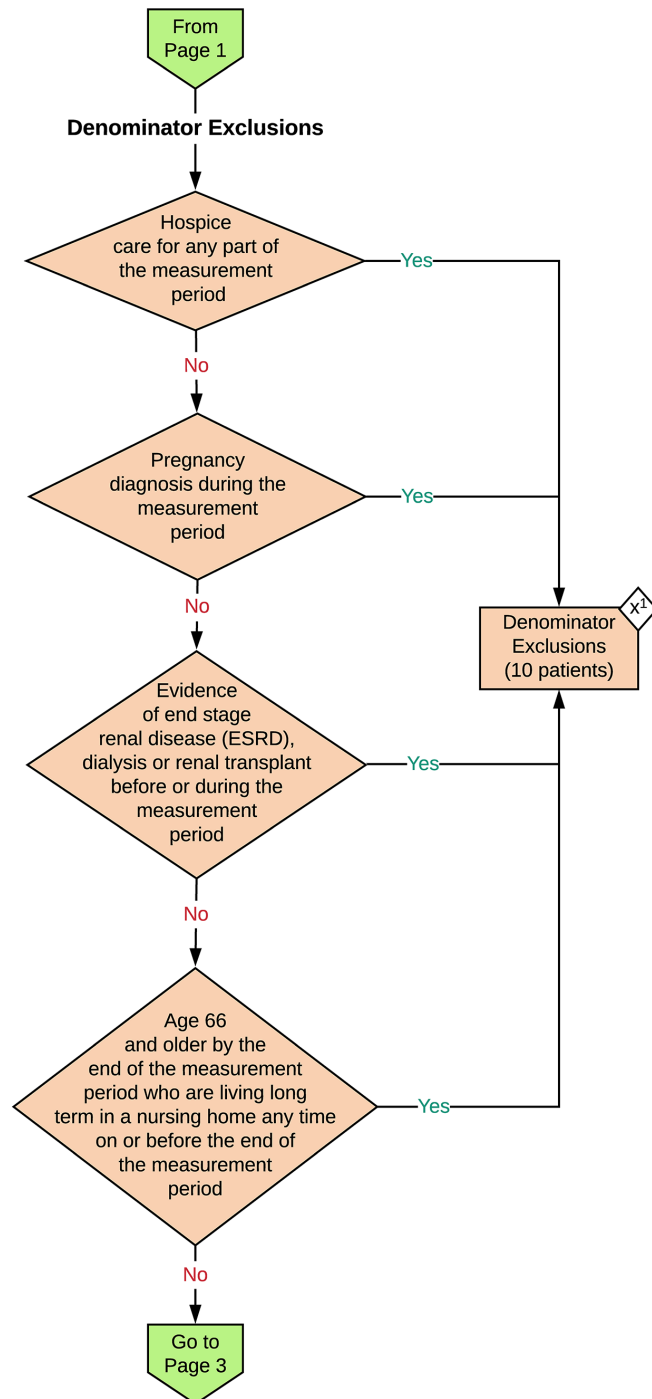
**NOTE:** This flow diagram represents an overview of population criteria requirements. **Refer to the eCQM specification for a complete list of data elements included in this measure and required for submission.**

**Controlling High Blood Pressure**

Percentage of patients 18-85 years of age who had a diagnosis of essential hypertension starting before and continuing into, or starting during the first six months of the measurement period, and whose most recent blood pressure is adequately controlled (<140/90mmHg) during the measurement period

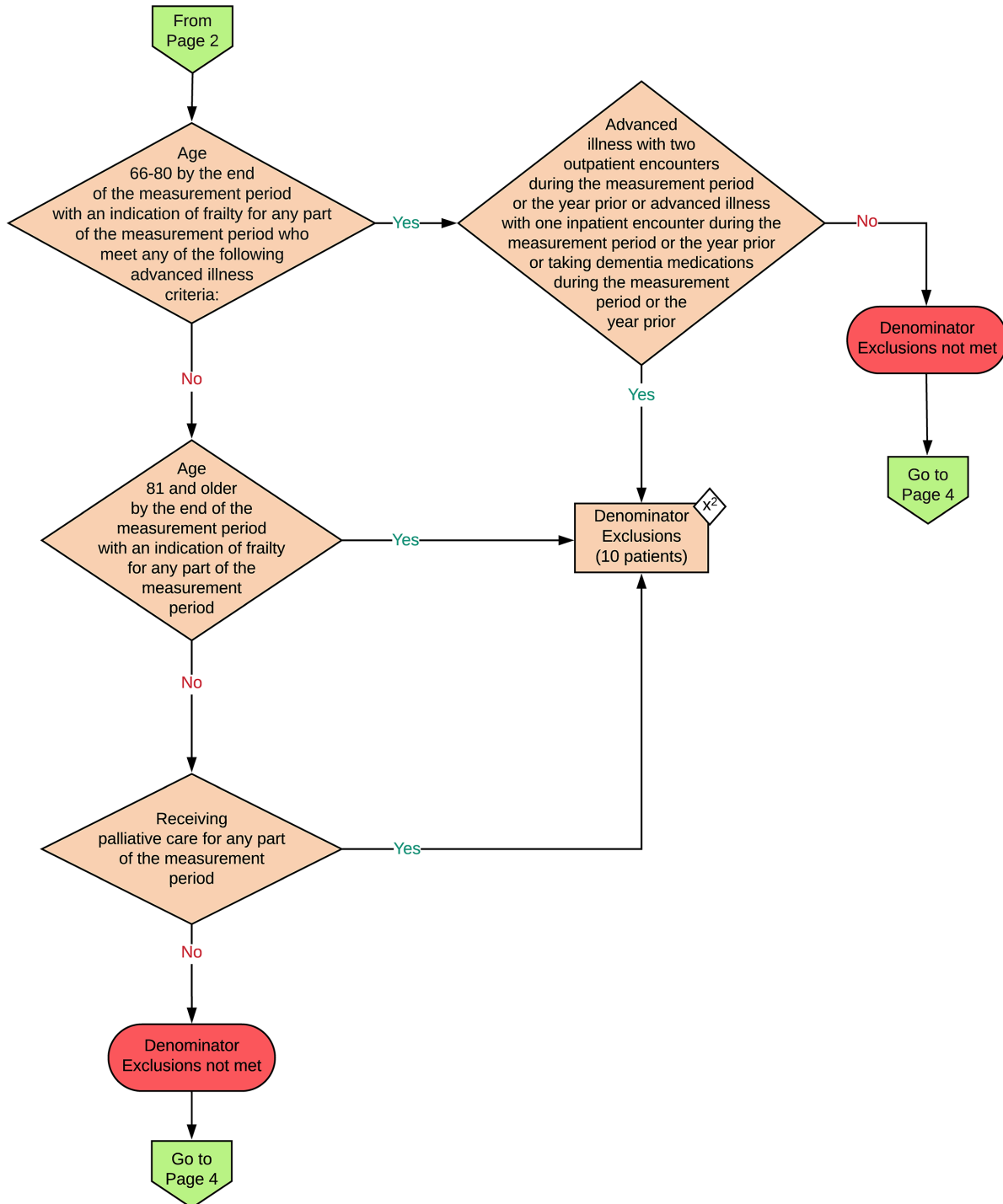
This eCQM is a patient-based measure

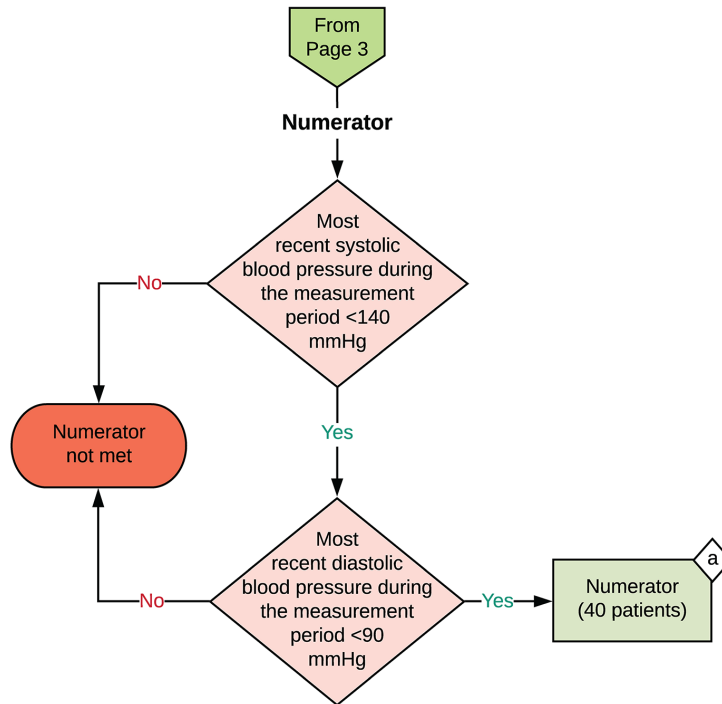




2023 eCQM Flow  
eCQM Identifier: CMS165v11

Controlling High Blood Pressure





**Sample Calculation**

**Performance Rate =**

$$\frac{\text{Numerator (a = 40 patients)}}{\text{Denominator (b = 100 patients) - Denominator Exclusions (x<sup>1</sup> + x<sup>2</sup> = 20 patients)}} = \frac{40}{80} = 50\%$$

**eCQM Identifier: CMS165v11**  
**eCQM Title: Controlling High Blood Pressure**

**NOTE:** This flow diagram represents an overview of population criteria requirements. Refer to the eCQM specification for a complete list of data elements included in this measure and required for submission.

**Description:** Percentage of patients 18 to 85 years of age who had a diagnosis of essential hypertension starting before and continuing into, or starting during the first six months of the measurement period, and whose most recent blood pressure is adequately controlled (<140/90 millimeters of mercury) during the measurement period.

**This eCQM is a patient-based measure.**

**eCQM Flow Narrative**

**Initial Population**

Start by identifying the Initial Population, which includes patients 18 to 85 years of age by the end of the measurement period with an eligible encounter during the measurement period and a diagnosis of essential hypertension starting before and continuing into, or starting during the first six months of the measurement period.

**Denominator**

The Denominator equals the Initial Population. In the sample calculation provided at the end of the eCQM flow, the Denominator is equal to 100 patients.

**Denominator Exclusions**

The Denominator Exclusions criteria identify a subset of the Denominator population by excluding patients in hospice care for any part of the measurement period, patients with a diagnosis of pregnancy during the measurement period, patients who had evidence of end stage renal disease (ESRD), dialysis or renal transplant before or during the measurement period, patients age 66 and older by the end of the measurement period who are living long term in a nursing home any time on or before the end of the measurement period, patients age 66-80 by the end of the measurement period with an indication of frailty for any part of the measurement period and advanced illness with two outpatient encounters during the measurement period or the year prior, patients age 66-80 by the end of the measurement period with an indication of frailty for any part of the measurement period and advanced illness with one inpatient encounter during the measurement period or the year prior, patients age 66-80 by the end of the measurement period with an indication of frailty for any part of the measurement period and advanced illness taking dementia medications during the measurement period or the year prior, patients age 81 and older by the end of the measurement period with frailty for any part of the measurement period, and patients receiving palliative care for any part of the measurement period. In the sample calculation provided at the end of the eCQM flow, the Denominator Exclusions are equal to 20 patients.

**Numerator**

The Numerator criteria identify a subset of the Denominator population (that did not meet the Denominator Exclusions criteria) by including patients with most recent systolic blood pressure during the measurement period less than 140 millimeters of mercury and most recent diastolic blood pressure during the measurement period less than 90 millimeters of mercury. In the sample calculation provided at the end of the eCQM flow, the Numerator is equal to 40 patients.

**Sample Calculation**

A sample calculation is provided to help determine how the measure performance rate is derived. The measure performance rate is calculated by dividing the Numerator (total equals 40 patients) by the difference between the Denominator (total equals 100 patients) and the Denominator Exclusions (total equals 20 patients), which is equal to a score of 50 percent.