

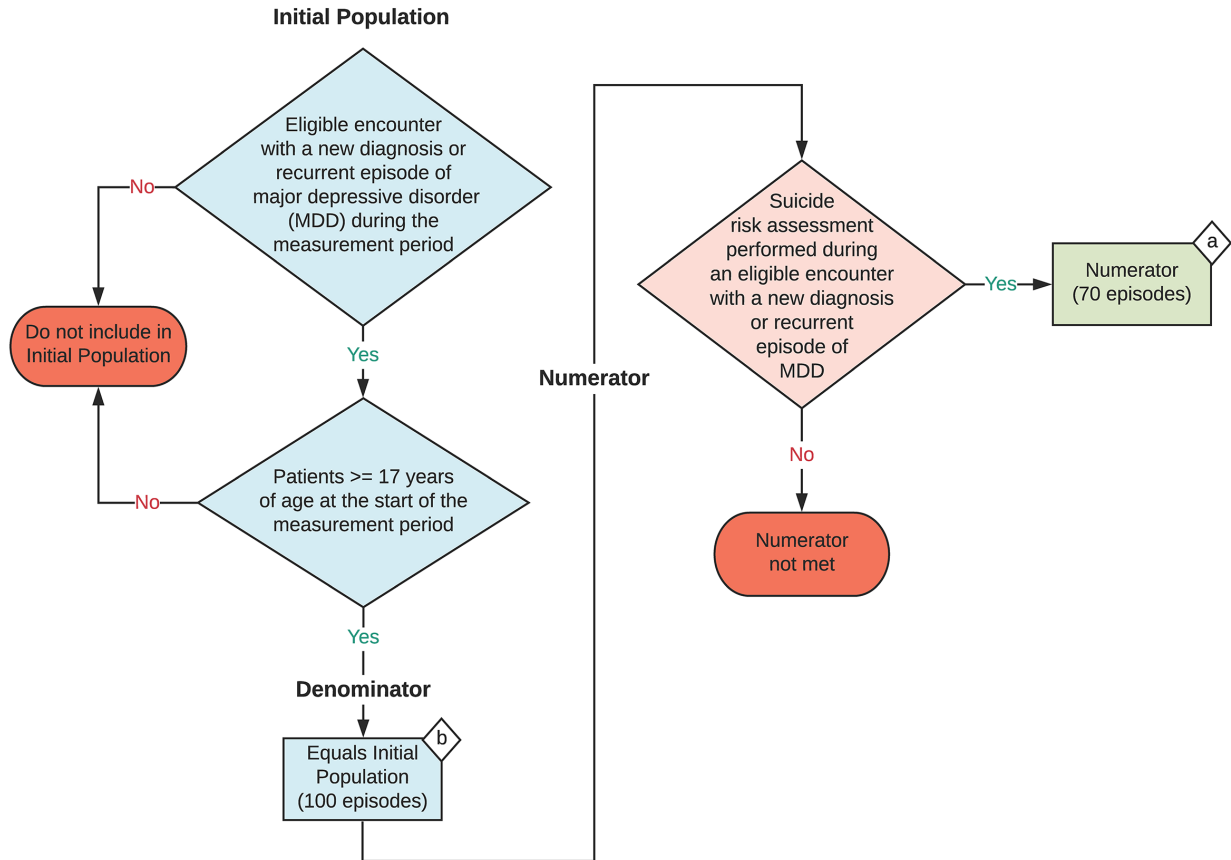
**2023 eCQM Flow**  
**eCQM Identifier: CMS161v11**  
**NQF Number: 0104e**

**NOTE:** This flow diagram represents an overview of population criteria requirements. **Refer to the eCQM specification for a complete list of data elements included in this measure and required for submission.**

**Adult Major Depressive Disorder (MDD): Suicide Risk Assessment**

Percentage of all patient visits for those patients that turn 18 or older during the measurement period in which a new or recurrent diagnosis of major depressive disorder (MDD) was identified and a suicide risk assessment was completed during the visit.

**This eCQM is an episode-based measure**



**Sample Calculation**

**Performance Rate =**

$$\frac{\text{Numerator (a = 70 episodes)}}{\text{Denominator (b = 100 episodes)}} = \frac{70}{100} = 70\%$$

**eCQM Identifier: CMS161v11**

**NQF Number: 0104e**

**eCQM Title: Adult Major Depressive Disorder (MDD): Suicide Risk Assessment**

**NOTE:** This flow diagram represents an overview of population criteria requirements. Refer to the eCQM specification for a complete list of data elements included in this measure and required for submission.

**Description:** Percentage of all patient visits for those patients that turn 18 or older during the measurement period in which a new or recurrent diagnosis of major depressive disorder (MDD) was identified and a suicide risk assessment was completed during the visit.

**This eCQM is an episode-based measure.**

### **eCQM Flow Narrative**

#### **Initial Population**

Start by identifying the Initial Population, which includes eligible encounters with a new diagnosis or recurrent episode of major depressive disorder (MDD) where the patient is 17 years of age and older at the start of the measurement period.

#### **Denominator**

The Denominator equals the Initial Population. In the sample calculation provided at the end of the eCQM flow, the Denominator is equal to 100 episodes.

#### **Numerator**

The Numerator criteria identify a subset of the Denominator population by including episodes for which a suicide risk assessment was performed during the eligible encounter in which a new diagnosis or recurrent episode of MDD was identified. In the sample calculation provided at the end of the eCQM flow, the Numerator is equal to 70 episodes.

#### **Sample Calculation**

A sample calculation is provided to help determine how the measure performance rate is derived. The measure performance rate is calculated by dividing the Numerator (total equals 70 episodes) by the Denominator (total equals 100 episodes), which is equal to a score of 70 percent in the sample calculation.