

**2023 eCQM Flow**  
**eCQM Identifier: CMS155v11**

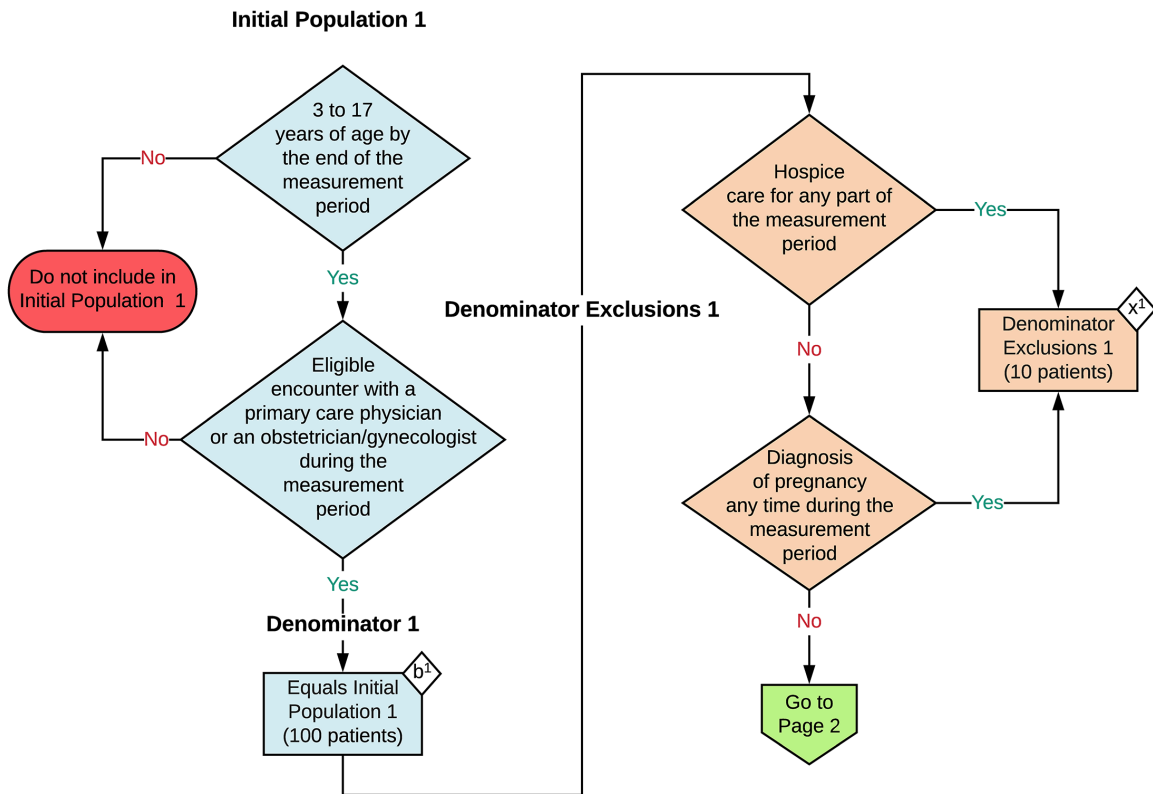
**NOTE:** This flow diagram represents an overview of population criteria requirements. Refer to the eCQM specification for a complete list of data elements included in this measure and required for submission.

**Weight Assessment and Counseling for Nutrition and Physical Activity for Children/Adolescents**

Percentage of patients 3 to 17 years of age who had an outpatient visit with a primary care physician (PCP) or obstetrician/gynecologist (OB/GYN) and who had evidence of the following during the measurement period.

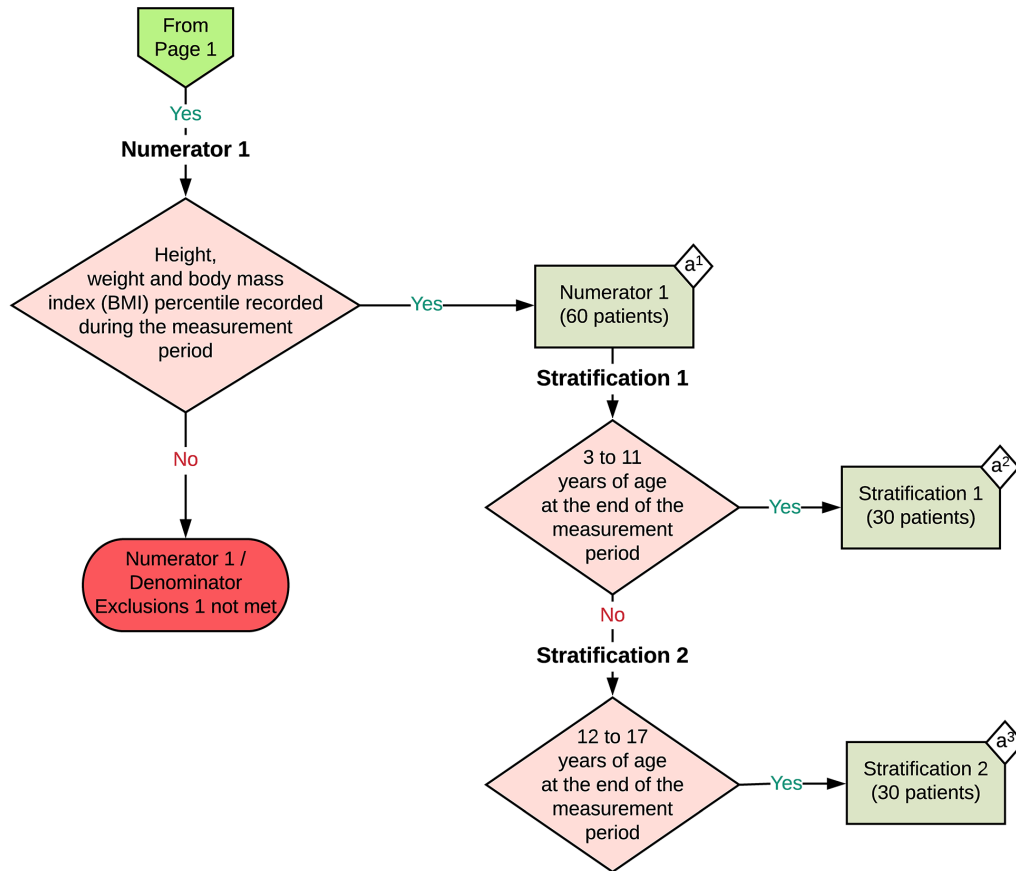
1. Percentage of patients with height, weight, and body mass index (BMI) percentile documentation
2. Percentage of patients with counseling for nutrition
3. Percentage of patients with counseling for physical activity

**This eCQM is a patient-based measure**



2023 eCQM Flow  
eCQM Identifier: CMS155v11

Weight Assessment and Counseling for Nutrition and  
Physical Activity for Children/Adolescents



**Sample Calculation: Population 1**

**Performance Rate 1 =**

$$\frac{\text{Numerator 1 (a}^1 = 60 \text{ patients)}}{\text{Denominator 1 (b}^1 = 100 \text{ patients) - Denominator Exclusions 1 (x}^1 = 10 \text{ patients)}} = \frac{60}{90} = 67\%$$

**Stratification 1 of Performance Rate 1 =**

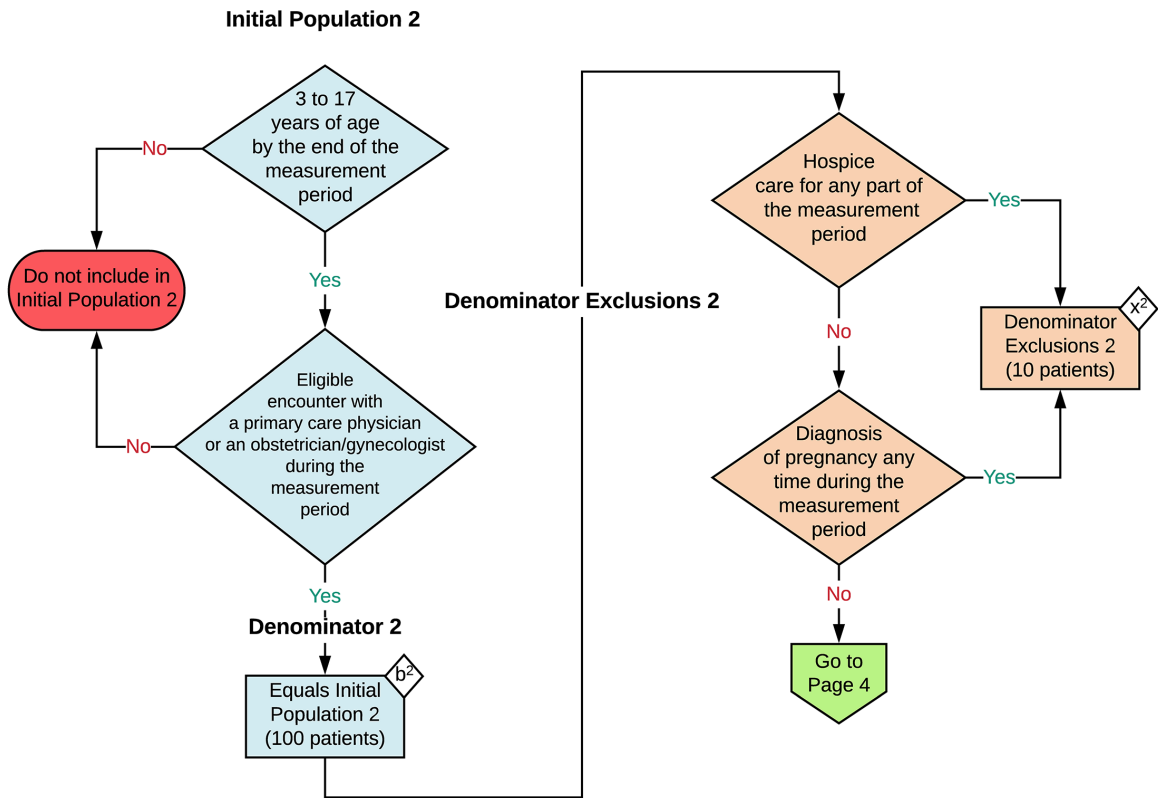
$$\frac{\text{Numerator 1 (a}^2 = 30 \text{ patients)}}{\text{Denominator 1 (b}^1 = 100 \text{ patients) - Denominator Exclusions 1 (x}^1 = 10 \text{ patients)}} = \frac{30}{90} = 33\%$$

**Stratification 2 of Performance Rate 1 =**

$$\frac{\text{Numerator 1 (a}^3 = 30 \text{ patients)}}{\text{Denominator 1 (b}^1 = 100 \text{ patients) - Denominator Exclusions 1 (x}^1 = 10 \text{ patients)}} = \frac{30}{90} = 33\%$$

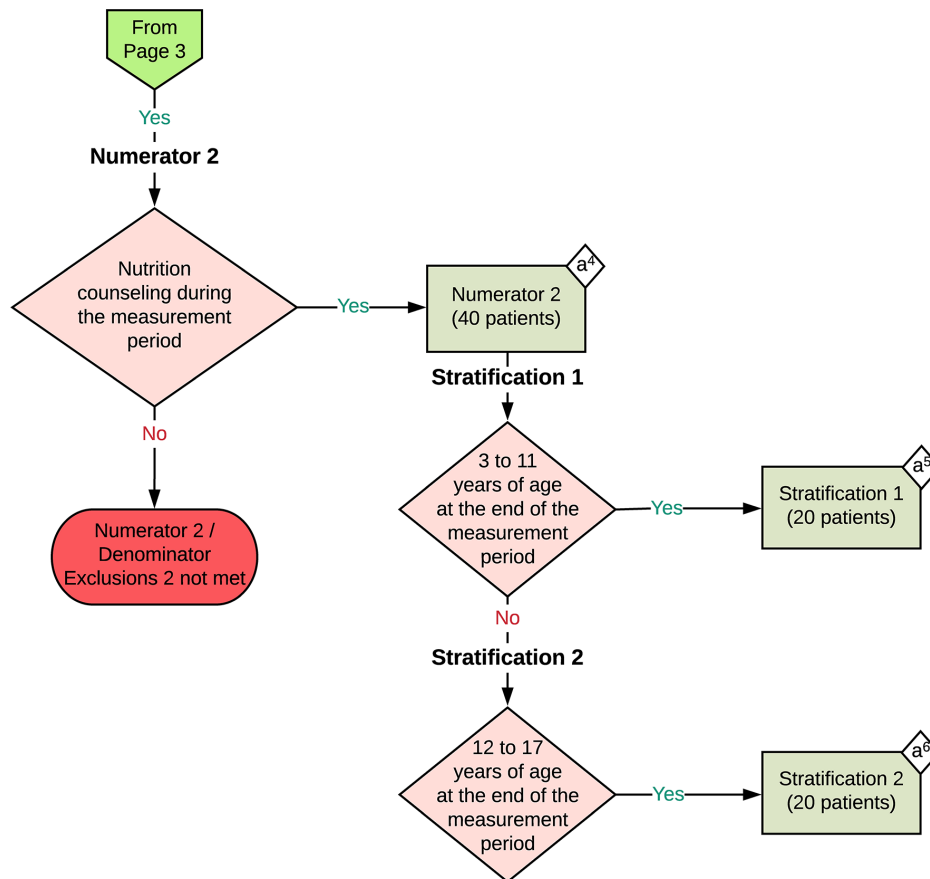
2023 eCQM Flow  
eCQM Identifier: CMS155v11

Weight Assessment and Counseling for Nutrition and  
Physical Activity for Children/Adolescents



2023 eCQM Flow  
eCQM Identifier: CMS155v11

Weight Assessment and Counseling for Nutrition and  
Physical Activity for Children/Adolescents



**Sample Calculation: Population 2**

**Performance Rate 2 =**

$$\frac{\text{Numerator 2 (a}^4 = 40 \text{ patients)}}{\text{Denominator 2 (b}^2 = 100 \text{ patients) - Denominator Exclusions 2 (x}^2 = 10 \text{ patients)}} = \frac{40}{90} = 44 \%$$

**Stratification 1 of Performance Rate 2 =**

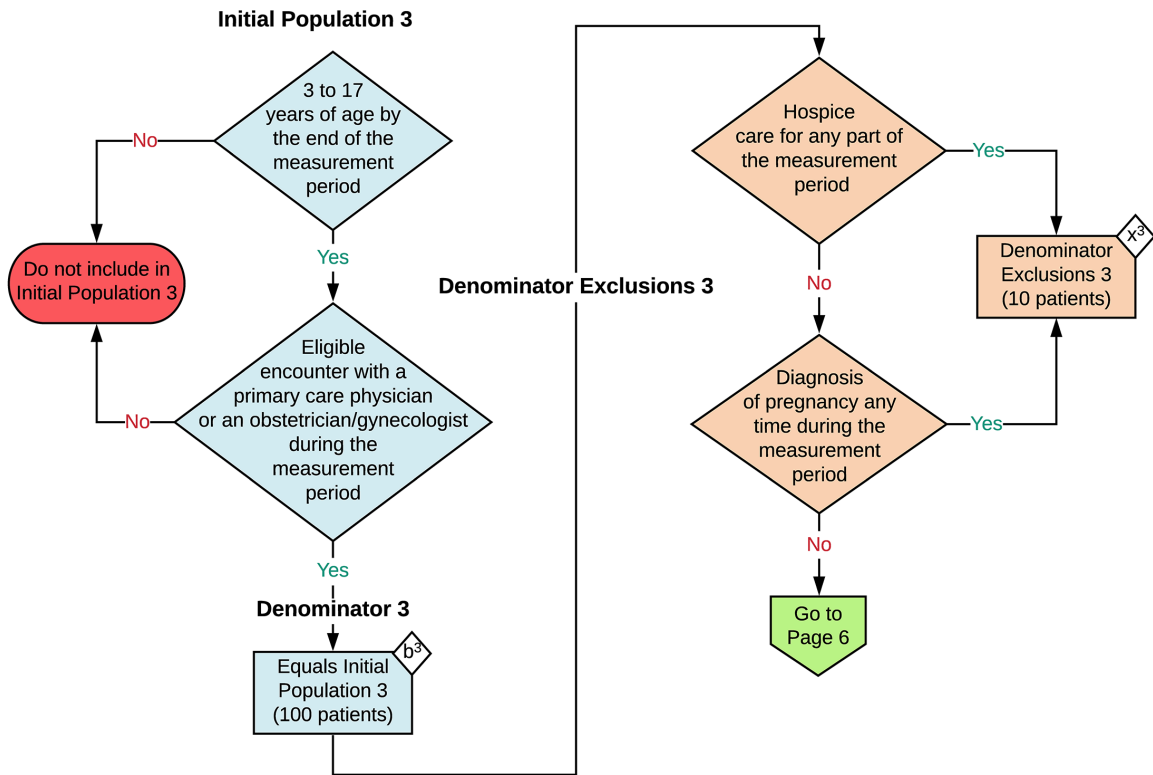
$$\frac{\text{Numerator 2 (a}^5 = 20 \text{ patients)}}{\text{Denominator 2 (b}^2 = 100 \text{ patients) - Denominator Exclusions 2 (x}^2 = 10 \text{ patients)}} = \frac{20}{90} = 22 \%$$

**Stratification 2 of Performance Rate 2 =**

$$\frac{\text{Numerator 2 (a}^6 = 20 \text{ patients)}}{\text{Denominator 2 (b}^2 = 100 \text{ patients) - Denominator Exclusions 2 (x}^2 = 10 \text{ patients)}} = \frac{20}{90} = 22 \%$$

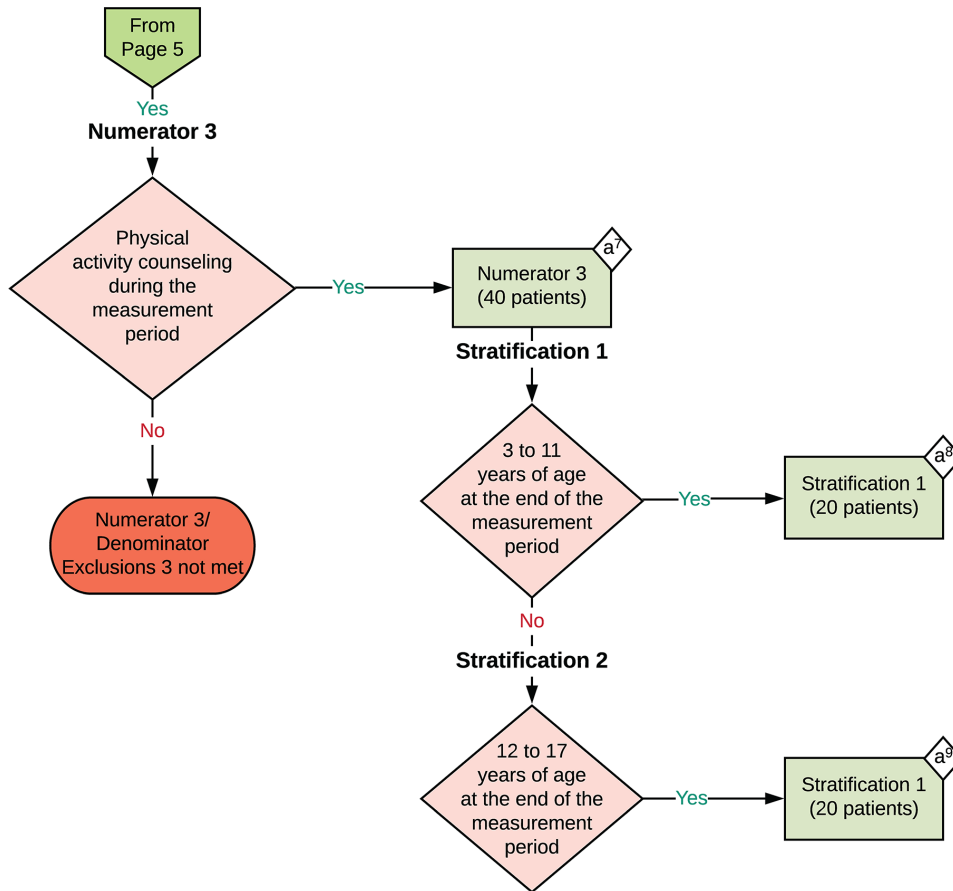
2023 eCQM Flow  
eCQM Identifier: CMS155v11

Weight Assessment and Counseling for Nutrition and Physical Activity for Children/Adolescents



2023 eCQM Flow  
eCQM Identifier: CMS155v11

Weight Assessment and Counseling for Nutrition and Physical Activity for Children/Adolescents



Sample Calculation: Population 3

**Performance Rate 3 =**

$$\frac{\text{Numerator 3 (a}^7 = 40 \text{ patients)}}{\text{Denominator 3 (b}^3 = 100 \text{ patients) - Denominator Exclusions 3 (x}^3 = 10 \text{ patients)}} = \frac{40}{90} = 44 \%$$

**Stratification 1 of Performance Rate 3 =**

$$\frac{\text{Numerator 3 (a}^8 = 20 \text{ patients)}}{\text{Denominator 3 (b}^3 = 100 \text{ patients) - Denominator Exclusions 3 (x}^3 = 10 \text{ patients)}} = \frac{20}{90} = 22 \%$$

**Stratification 2 of Performance Rate 3 =**

$$\frac{\text{Numerator 3 (a}^9 = 20 \text{ patients)}}{\text{Denominator 3 (b}^3 = 100 \text{ patients) - Denominator Exclusions 3 (x}^3 = 10 \text{ patients)}} = \frac{20}{90} = 22 \%$$

**eCQM Identifier: CMS155v11****eCQM Title: Weight Assessment and Counseling for Nutrition and Physical Activity for Children/Adolescents**

**NOTE:** This flow diagram represents an overview of population criteria requirements. Refer to the eCQM specification for a complete list of data elements included in this measure and required for submission.

**Description:** Percentage of patients 3 to 17 years of age who had an outpatient visit with a primary care physician (PCP) or obstetrician/gynecologist (OB/GYN) and who had evidence of the following during the measurement period.

- Percentage of patients with height, weight, and body mass index (BMI) percentile documentation
- Percentage of patients with counseling for nutrition
- Percentage of patients with counseling for physical activity

**This eCQM is a patient-based measure.**

**eCQM Flow Narrative****Initial Population 1**

Start by identifying the Initial Population 1, which includes patients 3 to 17 years of age by the end of the measurement period with an eligible encounter with a primary care physician (PCP) or an eligible encounter with an obstetrician/gynecologist (OB/GYN) during the measurement period.

**Denominator 1**

Denominator 1 equals the Initial Population 1. In the sample calculation provided at the end of the eCQM flow, Denominator 1 is equal to 100 patients.

**Denominator Exclusions 1**

The Denominator Exclusions 1 criteria identify a subset of the Denominator 1 population by excluding patients with a diagnosis of pregnancy any time during the measurement period or who are in hospice care for any part of the measurement period. In the sample calculation provided at the end of the eCQM flow, the Denominator Exclusions 1 are equal to 10 patients.

**Numerator 1**

The Numerator 1 criteria identify a subset of the Denominator 1 population (that did not meet the Denominator Exclusions 1 criteria) by including patients whose height, weight and body mass index (BMI) percentile were recorded during the measurement period. In the sample calculation provided at the end of the eCQM flow, Numerator 1 is equal to 60 patients.

**Stratification 1**

There are two strata for reporting separately by age group. Stratification 1 includes patients 3 to 11 years of age at the end of the measurement period. In the sample calculation provided at the end of the eCQM flow, Stratification 1 is equal to 30 patients.

**Stratification 2**

There are two strata for reporting separately by age group. Stratification 2 includes patients 12 to 17 years of age at the end of the measurement period. In the sample calculation provided at the end of the eCQM flow, Stratification 2 is equal to 30 patients.

**Sample Calculation: Population 1**

A sample calculation for Population 1 is provided to help determine how the measure performance rate 1 is derived. The measure performance rate 1 is calculated by dividing the Numerator 1 (total equals 60 patients) by the difference between the Denominator 1 (total equals 100 patients) and the Denominator Exclusions 1 (total equals 10 patients), which is equal to a score of 67 percent. Stratification 1 of performance rate 1 is calculated by dividing the Numerator 1 of Stratification 1 (total equals 30 patients) by the difference between the Denominator 1 (total equals 100 patients) and the Denominator Exclusions 1 (total equals 10 patients), which is equal to a score of 33 percent. Stratification 2 of performance rate 1 is calculated by dividing the Numerator 1 of Stratification 2 (total equals 30 patients) by the difference between the Denominator 1 (total equals 100 patients) and the Denominator Exclusions 1 (total equals 10 patients), which is equal to a score of 33 percent.

**Initial Population 2**

Continue by identifying the Initial Population 2, which includes patients 3 to 17 years of age by the end of the measurement period with an eligible encounter with a primary care physician (PCP) or an eligible encounter with an obstetrician/gynecologist (OB/GYN) during the measurement period.

**Denominator 2**

Denominator 2 equals the Initial Population 2. In the sample calculation provided at the end of the eCQM flow, Denominator 2 is equal to 100 patients.

**Denominator Exclusions 2**

The Denominator Exclusions 2 criteria identify a subset of the Denominator 2 population by excluding patients with a diagnosis of pregnancy any time during the measurement period or who are in hospice care for any part of the measurement period. In the sample calculation provided at the end of the eCQM flow, the Denominator Exclusions 2 are equal to 10 patients.

**Numerator 2**

The Numerator 2 criteria identify a subset of the Denominator 2 population (that did not meet the Denominator Exclusions 2 criteria) by including patients who received nutrition counseling during the measurement period. In the sample calculation provided at the end of the eCQM flow, Numerator 2 is equal to 40 patients.

**Stratification 1**

There are two strata for reporting separately by age group. Stratification 1 includes patients 3 to 11 years of age at the end of the measurement period. In the sample calculation provided at the end of the eCQM flow, Stratification 1 is equal to 20 patients.

**Stratification 2**

There are two strata for reporting separately by age group. Stratification 2 includes patients 12 to 17 years of age at the end of the measurement period. In the sample calculation provided at the end of the eCQM flow, Stratification 2 is equal to 20 patients.



**Sample Calculation: Population 2**

A sample calculation for Population 2 is provided to help determine how the measure performance rate 2 is derived. The measure performance rate 2 is calculated by dividing the Numerator 2 (total equals 40 patients) by the difference between the Denominator 2 (total equals 100 patients) and the Denominator Exclusions 2 (total equals 10 patients), which is equal to a score of 44 percent. Stratification 1 of performance rate 2 is calculated by dividing the Numerator 2 of Stratification 1 (total equals 20 patients) by the difference between the Denominator 2 (total equals 100 patients) and the Denominator Exclusions 2 (total equals 10 patients), which is equal to a score of 22 percent. Stratification 2 of performance rate 2 is calculated by dividing the Numerator 2 of Stratification 2 (total equals 20 patients) by the difference between the Denominator 2 (total equals 100 patients) and the Denominator Exclusions 2 (total equals 10 patients), which is equal to a score of 22 percent.

**Initial Population 3**

Continue by identifying the Initial Population 3, which includes patients 3 to 17 years of age by the end of the measurement period with an eligible encounter with a primary care physician (PCP) or an eligible encounter with an obstetrician/gynecologist (OB/GYN) during the measurement period.

**Denominator 3**

Denominator 3 equals the Initial Population 3. In the sample calculation provided at the end of the eCQM flow, Denominator 3 is equal to 100 patients.

**Denominator Exclusions 3**

The Denominator Exclusions 3 criteria identify a subset of the Denominator 3 population by excluding patients with a diagnosis of pregnancy any time during the measurement period or who are in hospice care for any part of the measurement period. In the sample calculation provided at the end of the eCQM flow, the Denominator Exclusions 3 are equal to 10 patients.

**Numerator 3**

The Numerator 3 criteria identify a subset of the Denominator 3 population (that did not meet the Denominator Exclusions 3 criteria) by including patients who received physical activity counseling during the measurement period. In the sample calculation provided at the end of the eCQM flow, Numerator 3 is equal to 40 patients.

**Stratification 1**

There are two strata for reporting separately by age group. Stratification 1 includes patients 3 to 11 years of age at the end of the measurement period. In the sample calculation provided at the end of the eCQM flow, Stratification 1 is equal to 20 patients.

**Stratification 2**

There are two strata for reporting separately by age group. Stratification 2 includes patients 12 to 17 years of age at the end of the measurement period. In the sample calculation provided at the end of the eCQM flow, Stratification 2 is equal to 20 patients.

**Sample Calculation: Population 3**

A sample calculation for Population 3 is provided to help determine how the measure performance rate 3 is derived. The measure performance rate 3 is calculated by dividing the Numerator 3 (total equals 40 patients) by the difference between the Denominator 3 (total equals 100 patients) and the Denominator Exclusions 3 (total equals 10 patients), which is equal to a score of 44 percent. Stratification 1 of performance rate 3 is calculated by dividing the Numerator 3 of Stratification 1 (total equals 20 patients) by the difference between the Denominator 3 (total equals 100 patients) and the Denominator Exclusions 3 (total equals 10 patients), which is equal to a score of 22 percent. Stratification 2 of

performance rate 3 is calculated by dividing the Numerator 3 of Stratification 2 (total equals 20 patients) by the difference between the Denominator 3 (total equals 100 patients) and the Denominator Exclusions 3 (total equals 10 patients), which is equal to a score of 22 percent.