

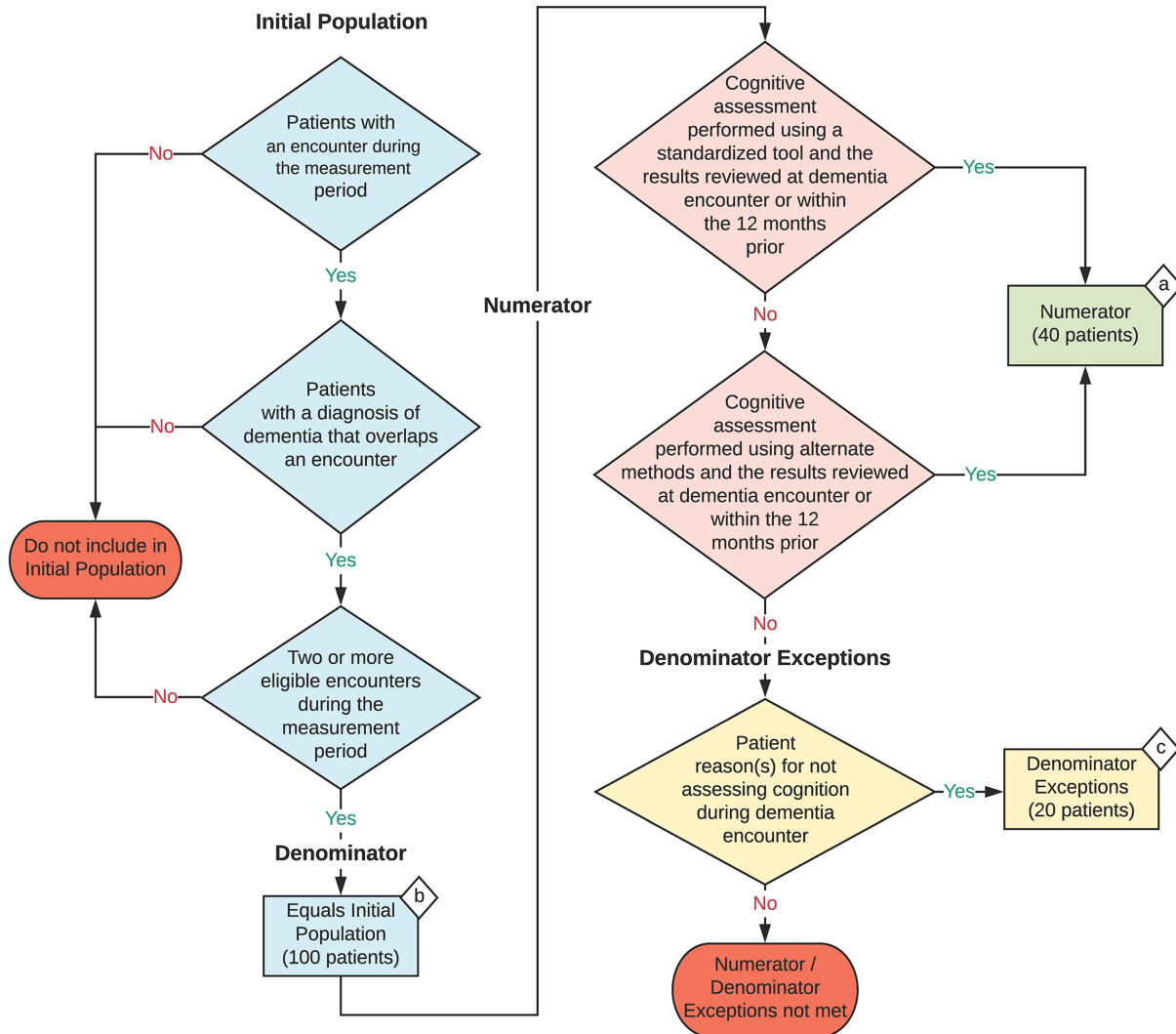
2024 eCQM Flow
eCQM Identifier: CMS149v12
NQF Number: 2872e

NOTE: This flow diagram represents an overview of population criteria requirements. Refer to the eCQM specification for a complete list of data elements included in this measure and required for submission.

Dementia: Cognitive Assessment

Percentage of patients, regardless of age, with a diagnosis of dementia for whom an assessment of cognition is performed and the results reviewed at least once within a 12-month period

This eCQM is a patient-based measure



Sample Calculation

Performance Rate =

$$\frac{\text{Numerator (a = 40 patients)}}{\text{Denominator (b = 100 patients) - Denominator Exceptions (c = 20 patients)}} = \frac{40}{80} = 50\%$$

eCQM Identifier: CMS149v12
NQF Number: 2872e
eCQM Title: Dementia: Cognitive Assessment

NOTE: This flow diagram represents an overview of population criteria requirements. Refer to the eCQM specification for a complete list of data elements included in this measure and required for submission.

Description: Percentage of patients, regardless of age, with a diagnosis of dementia for whom an assessment of cognition is performed and the results reviewed at least once within a 12-month period.

This eCQM is a patient-based measure.

eCQM Flow Narrative

Initial Population

Start by identifying the Initial Population, which includes patients with two or more eligible encounters during the measurement period and a diagnosis of dementia that overlaps an encounter.

Denominator

The Denominator equals the Initial Population. In the sample calculation provided at the end of the eCQM flow, the Denominator is equal to 100 patients.

Numerator

The Numerator criteria identify a subset of the Denominator population by including patients for whom a cognitive assessment was performed using a standardized tool or alternate methods at dementia encounter or within the 12 months prior. In the sample calculation provided at the end of the eCQM flow, the Numerator is equal to 40 patients.

Denominator Exceptions

The Denominator Exceptions criteria identify patients from the Denominator that did not meet the Numerator population criteria due to a patient reason(s) for not assessing cognition. In the sample calculation provided at the end of the eCQM flow, the Denominator Exceptions are equal to 20 patients.

Sample Calculation

A sample calculation is provided to help determine how the measure performance rate is derived. The measure performance rate is calculated by dividing the Numerator (total equals 40 patients) by the difference between the Denominator (total equals 100 patients) and the Denominator Exceptions (total equals 20 patients), which is equal to a score of 50 percent.