

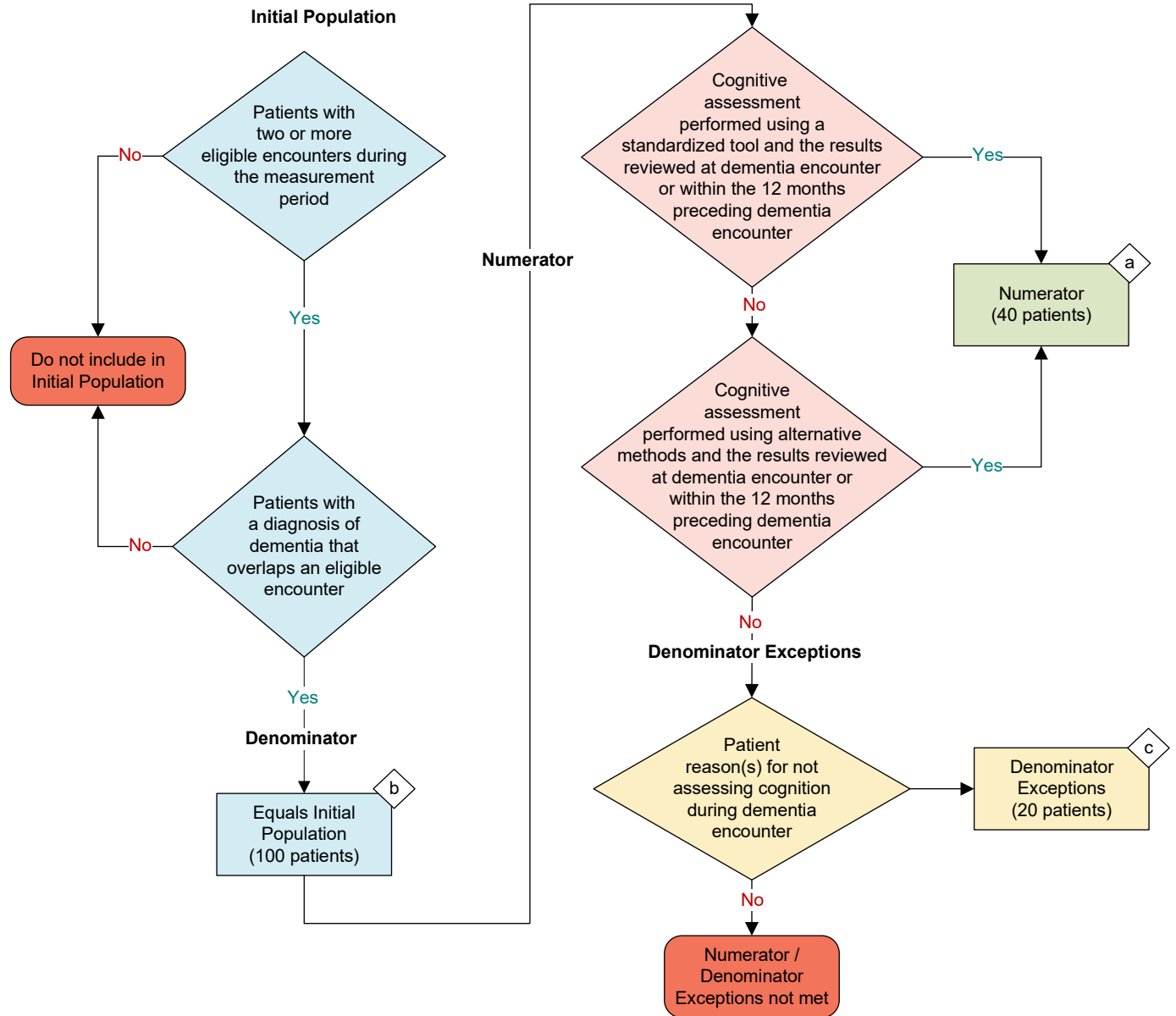
**2026 eCQM Flow**  
**eCQM Identifier: CMS149v14**  
**CBE Number: 2872e**

**NOTE:** This flow diagram represents an overview of population criteria requirements. **Refer to the eCQM specification for a complete list of data elements included in this measure and required for submission.**

### Dementia: Cognitive Assessment

Percentage of patients, regardless of age, with a diagnosis of dementia for whom an assessment of cognition is performed and the results reviewed at least once within the 12 months preceding a dementia encounter during the measurement period

**This eCQM is a patient-based measure**



### Performance Rate =

### Sample Calculation

$$\frac{\text{Numerator (a = 40 patients)}}{\text{Denominator (b = 100 patients) - Denominator Exceptions (c = 20 patients)}} = \frac{40}{80} = 50\%$$

**eCQM Identifier: CMS149v14****CBE #2872e****eCQM Title: Dementia: Cognitive Assessment**

**NOTE:** This flow diagram represents an overview of population criteria requirements. Refer to the eCQM specification for a complete list of data elements included in this measure and required for submission.

**Description:** Percentage of patients, regardless of age, with a diagnosis of dementia for whom an assessment of cognition is performed and the results reviewed at least once within the 12 months preceding a dementia encounter during the measurement period.

**This eCQM is a patient-based measure.**

**eCQM Flow Narrative****Initial Population**

Start by identifying the Initial Population, which includes patients with two or more eligible encounters during the measurement period and a diagnosis of dementia that overlaps an encounter.

**Denominator**

The Denominator equals the Initial Population. In the sample calculation provided at the end of the eCQM flow, the Denominator is equal to 100 patients.

**Numerator**

The Numerator criteria identify a subset of the Denominator population by including patients for whom a cognitive assessment was performed using a standardized tool or alternate methods at a dementia encounter or within the 12 months preceding a dementia encounter. In the sample calculation provided at the end of the eCQM flow, the Numerator is equal to 40 patients.

**Denominator Exceptions**

The Denominator Exceptions criteria identify patients from the Denominator that did not meet the Numerator population criteria due to a patient reason(s) for not assessing cognition. In the sample calculation provided at the end of the eCQM flow, the Denominator Exceptions are equal to 20 patients.

**Sample Calculation**

A sample calculation is provided to help determine how the measure performance rate is derived. The measure performance rate is calculated by dividing the Numerator (total equals 40 patients) by the difference between the Denominator (total equals 100 patients) and the Denominator Exceptions (total equals 20 patients), which is equal to a score of 50 percent.