

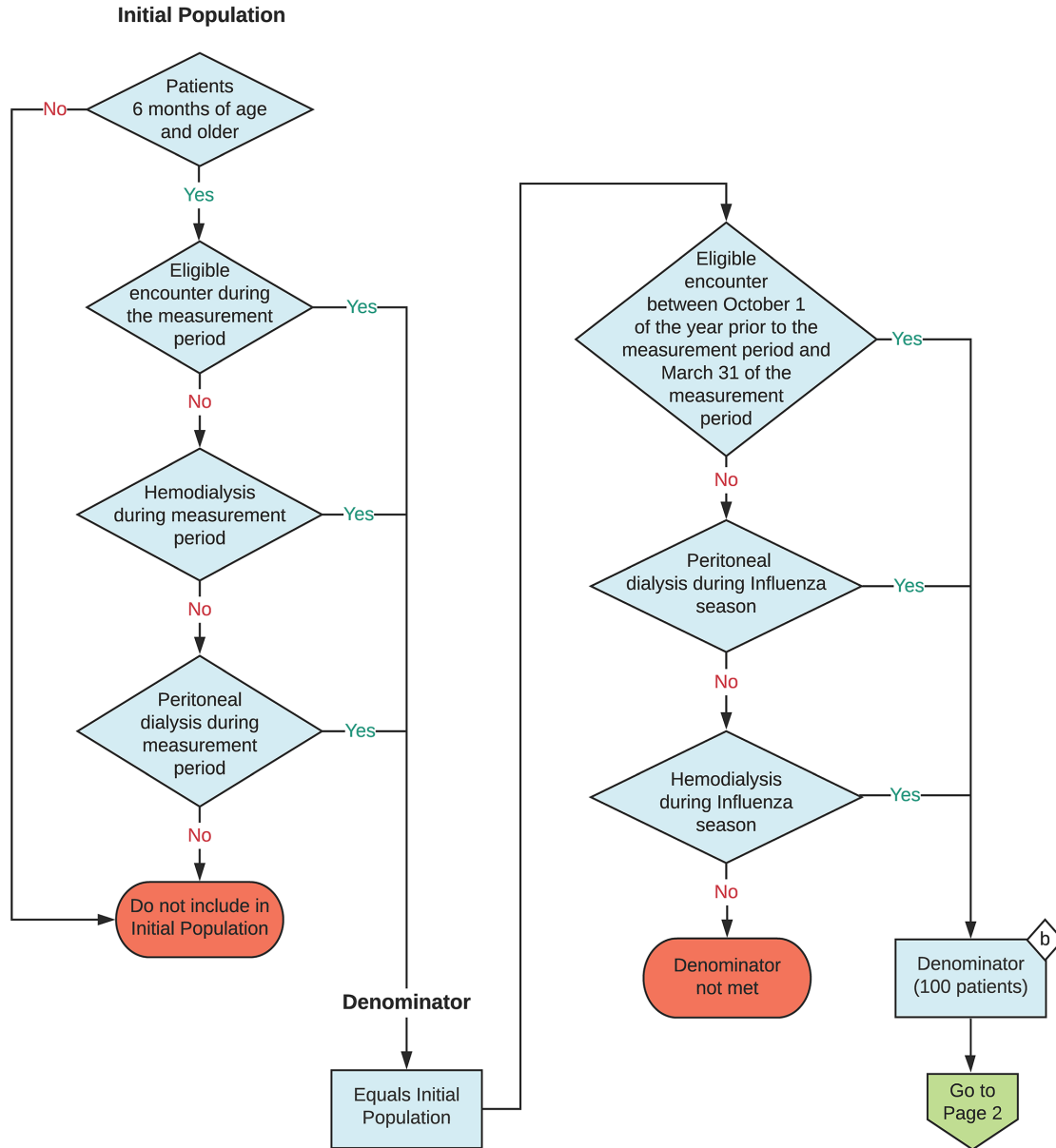
2023 eCQM Flow
eCQM Identifier: CMS147v12
NQF Number: 0041e

NOTE: This flow diagram represents an overview of population criteria requirements. Refer to the eCQM specification for a complete list of data elements included in this measure and required for submission.

Preventive Care and Screening: Influenza Immunization

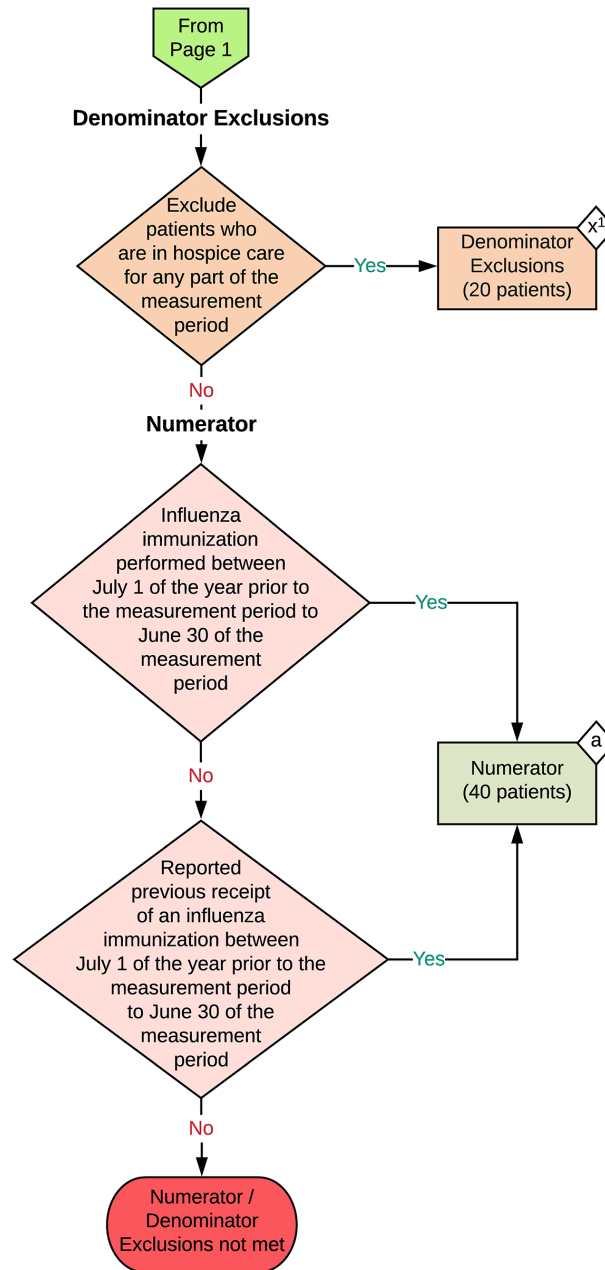
Percentage of patients aged 6 months and older seen for a visit between October 1 and March 31 who received an influenza immunization OR who reported previous receipt of an influenza immunization

This eCQM is a patient-based measure



2023 eCQM Flow
 eCQM Identifier: CMS147v12
 NQF Number: 0041e

Preventive Care and Screening: Influenza Immunization



Sample Calculation

Performance Rate =

Numerator (a = 40 patients)		=	$\frac{40}{80}$	= 50 %
Denominator (b = 100 patients) - Denominator Exclusions (x = 20 patients)				

eCQM Identifier: CMS147v12

NQF Number: 0041e

eCQM Title: Preventive Care and Screening: Influenza Immunization

NOTE: This flow diagram represents an overview of population criteria requirements. Refer to the eCQM specification for a complete list of data elements included in this measure and required for submission.

Description: Percentage of patients aged 6 months and older seen for a visit between October 1 and March 31 who received an influenza immunization OR who reported previous receipt of an influenza immunization.

This eCQM is a patient-based measure.

eCQM Flow Narrative

Initial Population

Start by identifying the Initial Population, which includes patients 6 months of age and older who have an eligible encounter during the measurement period, are receiving hemodialysis during the measurement period, or are receiving peritoneal dialysis during the measurement period..

Denominator

The Denominator equals the Initial Population and seen for a visit between October 1 of the year prior to the measurement period and March 31 of the measurement period. In the sample calculation provided at the end of the eCQM flow, the Denominator is equal to 100 patients.

Denominator Exclusions

The Denominator Exclusions criteria identify a subset of the Denominator population by excluding patients who are in hospice care for any part of the measurement period. In the sample calculation provided at the end of the eCQM flow, the Denominator Exclusions is equal to 20 patients.

Numerator

The Numerator criteria identify a subset of the Denominator population. The Numerator criteria include patients that either had the influenza immunization or reported previous receipt of an influenza immunization between July 1 of the year prior to the measurement period to June 30 of the measurement period. In the sample calculation provided at the end of the eCQM flow, the Numerator is equal to 40 patients.

Sample Calculation

A sample calculation is provided to help determine how the measure performance rate is derived. The measure performance rate is calculated by dividing the Numerator (total equals 40 patients) by the difference between the Denominator (total equals 100 patients) and the Denominator Exclusions (total equals 20 patients), which is equal to a score of 50 percent.