

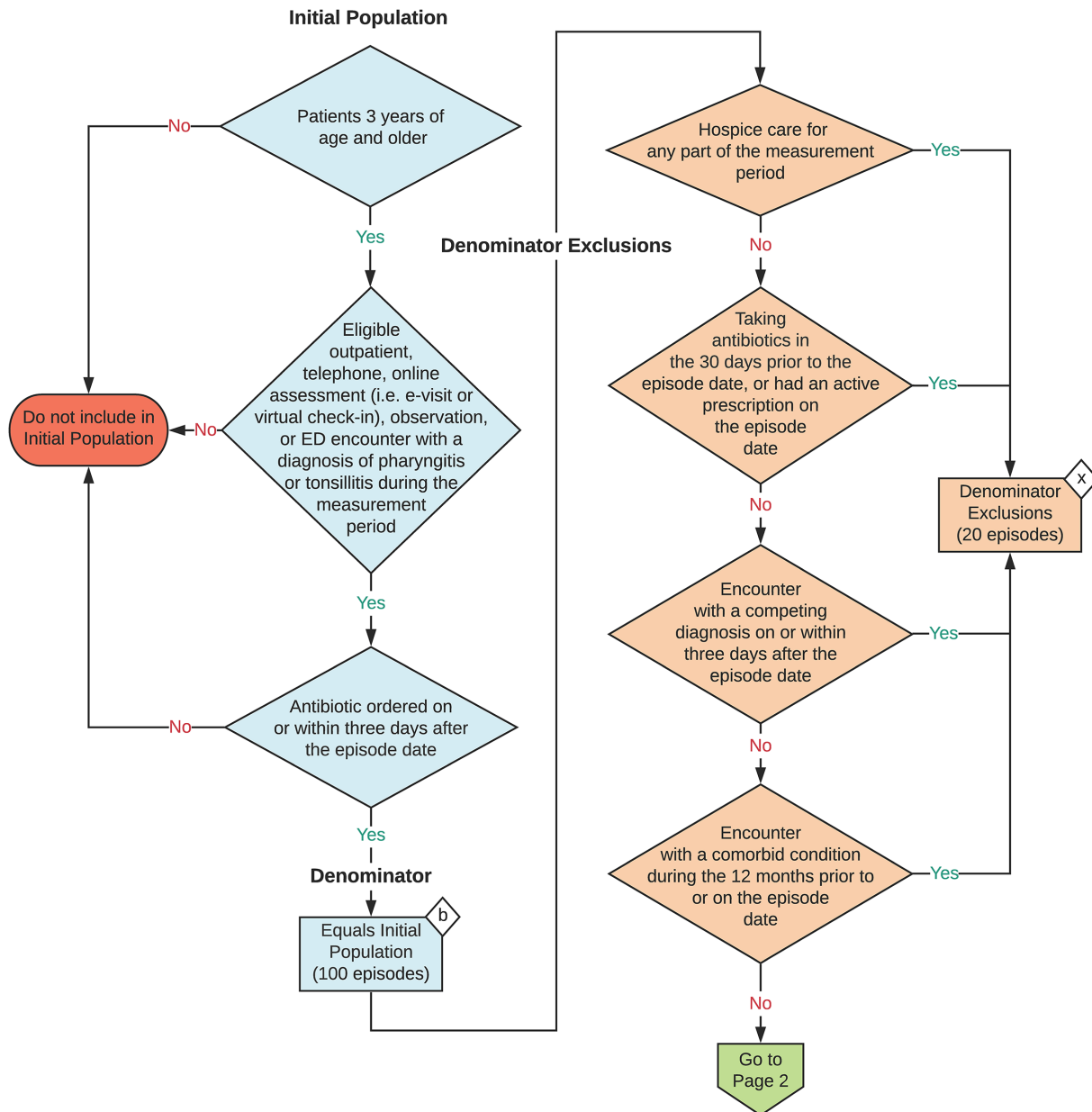
2023 eCQM Flow
eCQM Identifier: CMS146v11

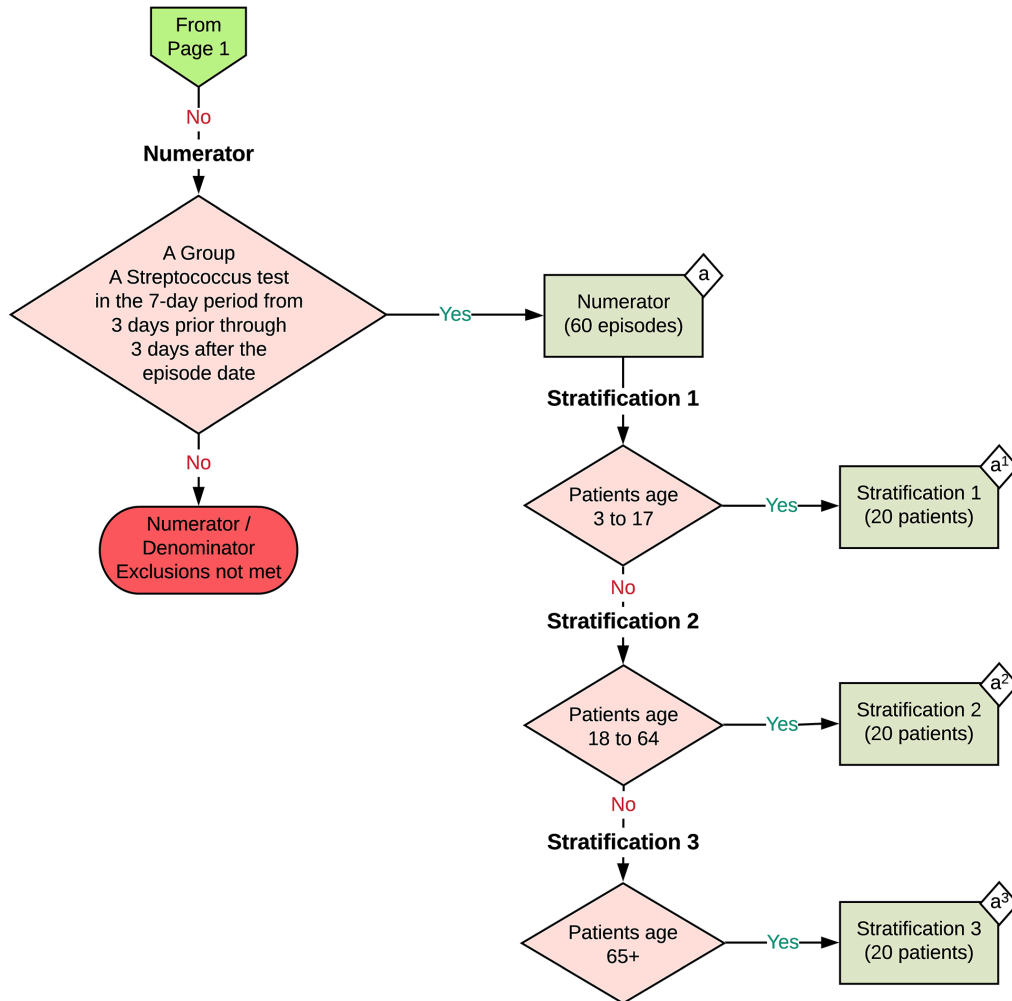
NOTE: This flow diagram represents an overview of population criteria requirements. Refer to the eCQM specification for a complete list of data elements included in this measure and required for submission.

Appropriate Testing for Pharyngitis

Percentage of episodes for patients 3 years and older with a diagnosis of pharyngitis that resulted in an antibiotic order and a group A streptococcus (strep) test in the seven-day period from three days prior to the episode date through three days after the episode date

This eCQM is an episode-based measure





Sample Calculation

Performance Rate =

$$\frac{\text{Numerator (a = 60 patients)}}{\text{Denominator (b = 100 patients) - Denominator Exclusions (x = 20 patients)}} = \frac{60}{80} = 75 \%$$

Stratification 1 of Performance Rate =

$$\frac{\text{Numerator (a}^1\text{ = 20 patients)}}{\text{Denominator (b = 100 patients) - Denominator Exclusions (x = 20 patients)}} = \frac{20}{80} = 25 \%$$

Stratification 2 of Performance Rate =

$$\frac{\text{Numerator (a}^2\text{ = 20 patients)}}{\text{Denominator (b = 100 patients) - Denominator Exclusions (x = 20 patients)}} = \frac{20}{80} = 25 \%$$

Stratification 3 of Performance Rate =

$$\frac{\text{Numerator (a}^3\text{ = 20 patients)}}{\text{Denominator (b = 100 patients) - Denominator Exclusions (x = 20 patients)}} = \frac{20}{80} = 25 \%$$

eCQM Identifier: CMS146v11
eCQM Title: Appropriate Testing for Pharyngitis

NOTE: This flow diagram represents an overview of population criteria requirements. Refer to the eCQM specification for a complete list of data elements included in this measure and required for submission.

Description: Percentage of episodes for patients 3 years of age and older with a diagnosis of pharyngitis that resulted in an antibiotic order and a group A streptococcus (strep) test in the seven-day period from three days prior to the episode date through three days after the episode date.

This eCQM is an episode-based measure.

eCQM Flow Narrative

Initial Population

Start by identifying the Initial Population, which includes outpatient, telephone, online assessment (i.e. e-visit or virtual check-in), observation, or emergency department (ED) encounter with a diagnosis of pharyngitis or tonsillitis, and an antibiotic order on or within 3 days after the eligible encounter (episode date) among patients 3 years or older.

Denominator

The Denominator equals the Initial Population. In the sample calculation provided at the end of the eCQM flow, the Denominator is equal to 100 episodes.

Denominator Exclusions

The Denominator Exclusions criteria identify a subset of the Denominator population by excluding episodes where the patient had hospice care for any part of the measurement period, episodes where the patient is taking antibiotics in the 30 days prior to the episode date or had an active prescription on the episode date, episodes where the patient had a competing diagnosis on or within three days after the episode date, or episodes where the patient had a comorbid condition during the 12 months prior to or on the episode date. In the sample calculation provided at the end of the eCQM flow, the Denominator Exclusions are equal to 20 episodes.

Numerator

The Numerator criteria identify a subset of the Denominator population (that did not meet the Denominator Exclusions criteria) by including episodes with a Group A Streptococcus test in the 7-day period from three days prior through three days after the episode date. In the sample calculation provided at the end of the eCQM flow, the Numerator is equal to 60 episodes.

Sample Calculation

A sample calculation is provided to help determine how the measure performance rate is derived. The measure performance rate is calculated by dividing the Numerator (total equals 60 episodes) by the difference between the Denominator (total equals 100 episodes) and the Denominator Exclusions (total equals 20 episodes), which is equal to a score of 75 percent.

Stratification 1

There are three strata for reporting separately by age group. Stratification 1 includes patients 3 to 17 years of age. In the sample calculation provided at the end of the eCQM flow, Stratification 1 is equal to 20 patients.

Stratification 2

There are three strata for reporting separately by age group. Stratification 2 includes patients 18 to 64 years of age. In the sample calculation provided at the end of the eCQM flow, Stratification 2 is equal to 20 patients.

Stratification 3

There are three strata for reporting separately by age group. Stratification 3 includes patients 65 years of age and older. In the sample calculation provided at the end of the eCQM flow, Stratification 3 is equal to 20 patients.