

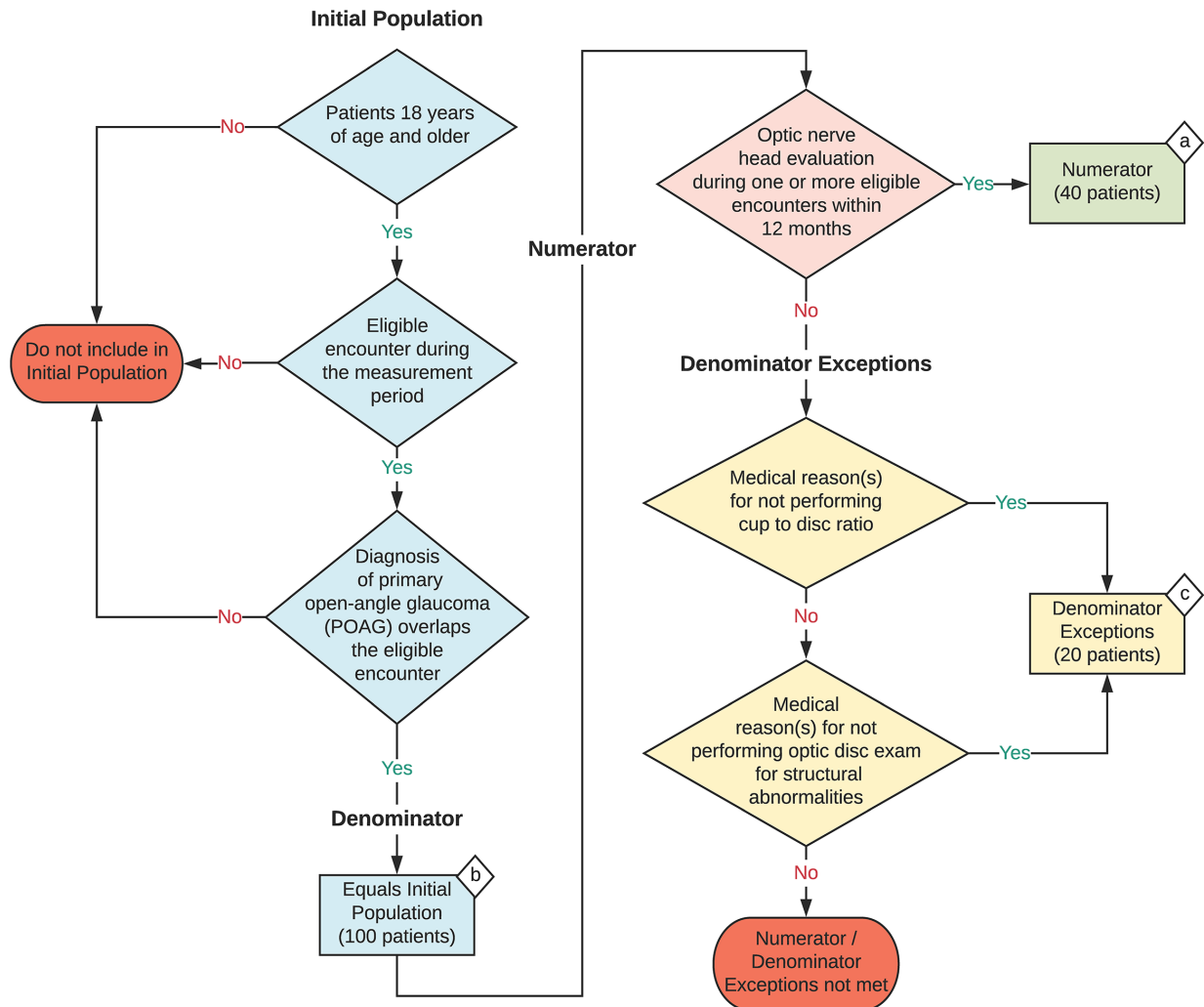
**2023 eCQM Flow**  
**eCQM Identifier: CMS143v11**  
**NQF Number: 0086e**

**NOTE:** This flow diagram represents an overview of population criteria requirements. Refer to the eCQM specification for a complete list of data elements included in this measure and required for submission.

**Primary Open-Angle Glaucoma (POAG): Optic Nerve Evaluation**

Percentage of patients aged 18 years and older with a diagnosis of primary open-angle glaucoma (POAG) who have an optic nerve head evaluation during one or more visits within 12 months

This eCQM is a patient-based measure



**Sample Calculation**

**Performance Rate =**

$$\frac{\text{Numerator (a = 40 patients)}}{\text{Denominator (b = 100 patients) - Denominator Exceptions (c = 20 patients)}} = \frac{40}{80} = 50\%$$

**eCQM Identifier: CMS143v11**

**NQF Number: 0086e**

**eCQM Title: Primary Open-Angle Glaucoma (POAG): Optic Nerve Evaluation**

**NOTE:** This flow diagram represents an overview of population criteria requirements. Refer to the eCQM specification for a complete list of data elements included in this measure and required for submission.

**Description:** Percentage of patients aged 18 years and older with a diagnosis of primary open-angle glaucoma (POAG) who have an optic nerve head evaluation during one or more visits within 12 months.

**This eCQM is a patient-based measure.**

### **eCQM Flow Narrative**

#### **Initial Population**

Start by identifying the Initial Population, which includes patients 18 years of age and older who have an eligible encounter during the measurement period and a diagnosis of primary open-angle glaucoma (POAG) during the eligible encounter.

#### **Denominator**

The Denominator equals the Initial Population. In the sample calculation provided at the end of the eCQM flow, the Denominator is equal to 100 patients.

#### **Numerator**

The Numerator criteria identify a subset of the Denominator population by including patients who have an optic nerve head evaluation during one or more eligible encounters within 12 months. In the sample calculation provided at the end of the eCQM flow, the Numerator is equal to 40 patients.

#### **Denominator Exceptions**

The Denominator Exceptions criteria identify patients from the Denominator that did not meet the Numerator population criteria due to a medical reason(s) for not performing cup to disc ratio or a medical reason(s) for not performing optic disc exam for structural abnormalities. In the sample calculation provided at the end of the eCQM flow, the Denominator Exceptions are equal to 20 patients.

#### **Sample Calculation**

A sample calculation is provided to help determine how the measure performance rate is derived. The measure performance rate is calculated by dividing the Numerator (total equals 40 patients) by the difference between the Denominator (total equals 100 patients) and the Denominator Exceptions (total equals 20 patients), which is equal to a score of 50 percent.