

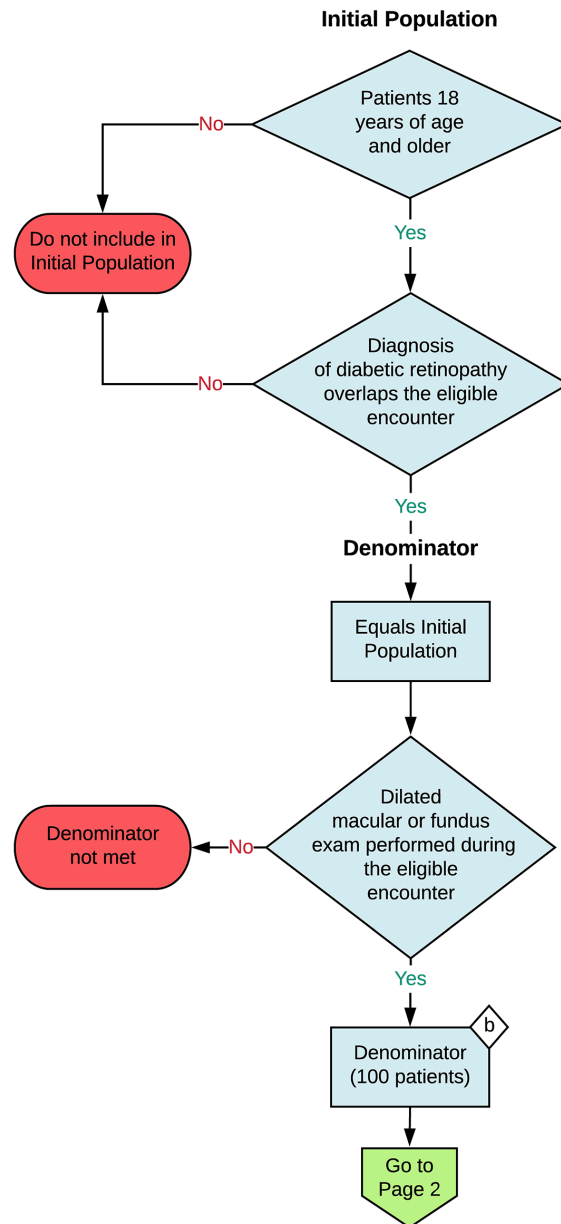
2024 eCQM Flow
eCQM Identifier: CMS142v12

NOTE: This flow diagram represents an overview of population criteria requirements. **Refer to the eCQM specification for a complete list of data elements included in this measure and required for submission.**

Diabetic Retinopathy: Communication with the Physician Managing Ongoing Diabetes Care

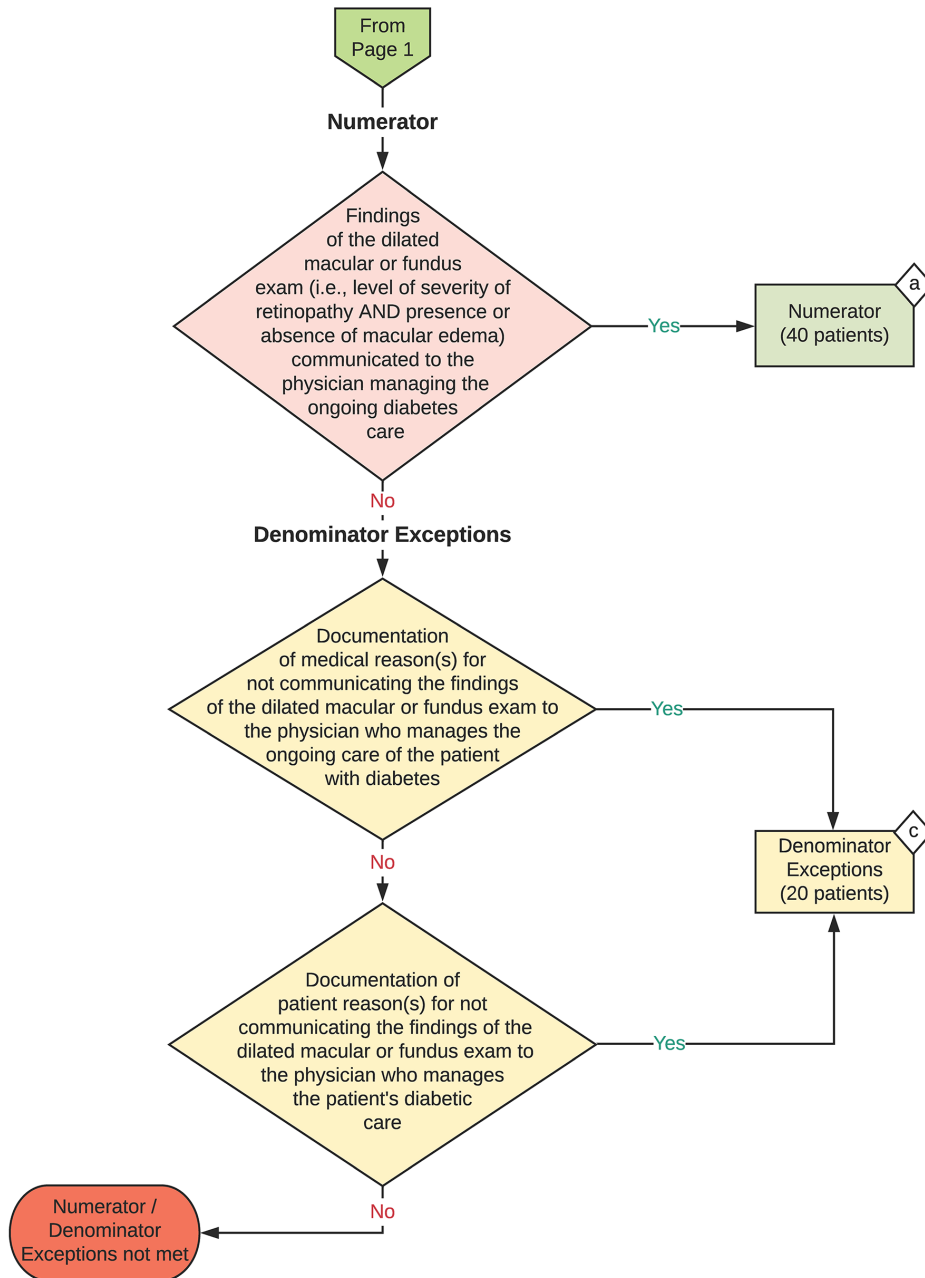
Percentage of patients aged 18 years and older with a diagnosis of diabetic retinopathy who had a dilated macular or fundus exam performed with documented communication to the physician who manages the ongoing care of the patient with diabetes mellitus regarding the findings of the macular or fundus exam at least once during the measurement period

This eCQM is a patient-based measure



2024 eCQM Flow
eCQM Identifier: CMS142v12

**Diabetic Retinopathy: Communication with the Physician
Managing Ongoing Diabetes Care**



Sample Calculation

Performance Rate =

Numerator (a = 40 patients)	=	$\frac{40}{80}$
Denominator (b = 100 patients) - Denominator Exceptions (c = 20 patients)	=	$\frac{40}{80} = 50\%$

eCQM Identifier: CMS142v12**eCQM Title: Diabetic Retinopathy: Communication with the Physician Managing Ongoing Diabetes Care**

NOTE: This flow diagram represents an overview of population criteria requirements. Refer to the eCQM specification for a complete list of data elements included in this measure and required for submission.

Description: Percentage of patients aged 18 years and older with a diagnosis of diabetic retinopathy who had a dilated macular or fundus exam performed with documented communication to the physician who manages the ongoing care of the patient with diabetes mellitus regarding the findings of the macular or fundus exam at least once during the measurement period.

This eCQM is a patient-based measure.

eCQM Flow Narrative**Initial Population**

Start by identifying the Initial Population, which includes patients 18 years of age and older with a diagnosis of diabetic retinopathy that overlaps the eligible encounter during the measurement period.

Denominator

The Denominator criteria further constrain the Initial Population to patients with a dilated macular or fundus exam performed during the eligible encounter. In the sample calculation provided at the end of the eCQM flow, the Denominator is equal to 100 patients.

Numerator

The Numerator criteria identify a subset of the Denominator population by including patients for whom the findings of the dilated macular or fundus exam (i.e., level of severity of retinopathy AND presence or absence of macular edema) were communicated to the physician managing the ongoing diabetes care. In the sample calculation provided at the end of the eCQM flow, the Numerator is equal to 40 patients.

Denominator Exceptions

The Denominator Exceptions criteria identify patients from the Denominator that did not meet the Numerator population criteria due to documentation of a medical reason or a patient reason for not communicating the findings of the dilated macular or fundus exam to the physician who manages the ongoing care of the patient with diabetes. In the sample calculation provided at the end of the eCQM flow, the Denominator Exceptions are equal to 20 patients.

Sample Calculation

A sample calculation is provided to help determine how the measure performance rate is derived. The measure performance rate is calculated by dividing the Numerator (total equals 40 patients) by the difference between the Denominator (total equals 100 patients) and the Denominator Exceptions (total equals 20 patients), which is equal to a score of 50 percent.