

2023 eCQM Flow
eCQM Identifier: CMS138v11
NQF Number: 0028e

NOTE: This flow diagram represents an overview of population criteria requirements. Refer to the eCQM specification for a complete list of data elements included in this measure and required for submission.

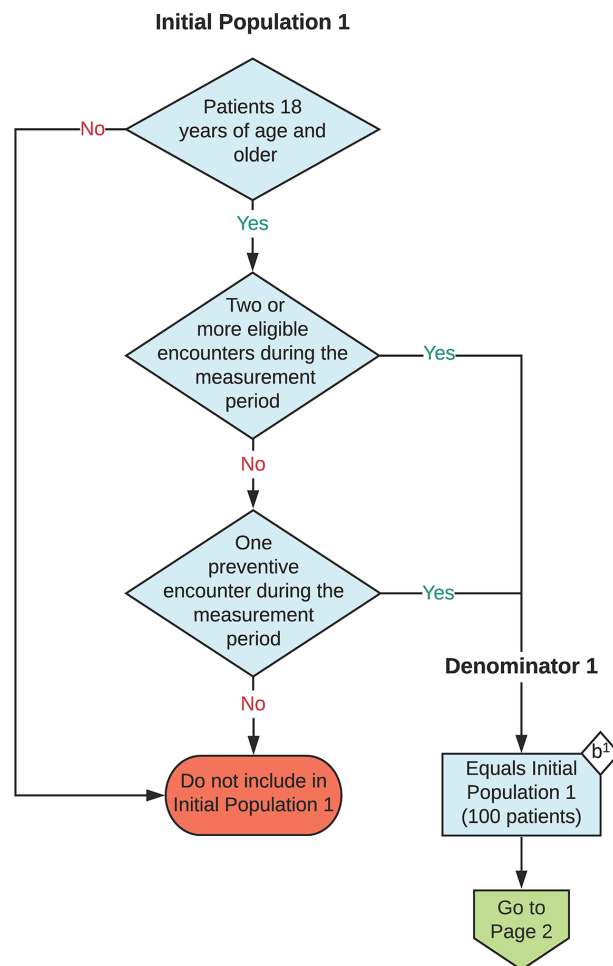
Preventive Care and Screening: Tobacco Use: Screening and Cessation Intervention

Percentage of patients aged 18 years and older who were screened for tobacco use one or more times during the measurement period AND who received tobacco cessation intervention during the measurement period or in the six months prior to the measurement period if identified as a tobacco user.

Three rates are reported:

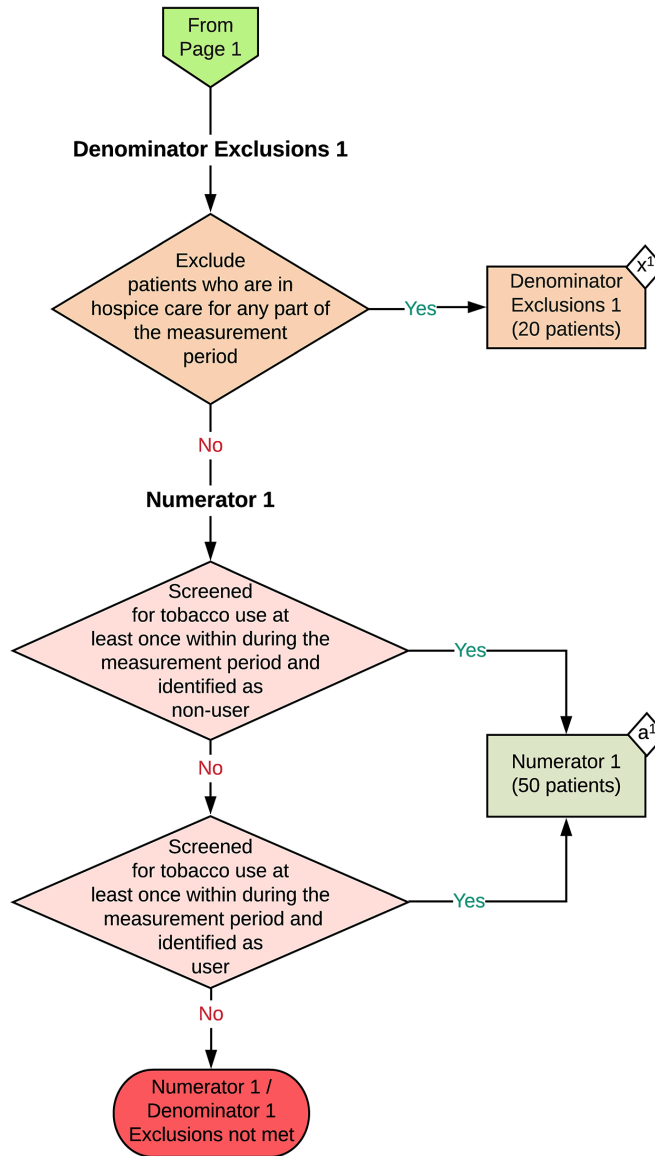
- a. Percentage of patients aged 18 years and older who were screened for tobacco use one or more times during the measurement period
- b. Percentage of patients aged 18 years and older who were identified as a tobacco user during the measurement period who received tobacco cessation intervention during the measurement period or in the six months prior to the measurement period
- c. Percentage of patients aged 18 years and older who were screened for tobacco use one or more times during the measurement period AND who received tobacco cessation intervention during the measurement period or in the six months prior to the measurement period if identified as a tobacco user

This eCQM is a patient-based measure



2023 eCQM Flow
 eCQM Identifier: CMS138v11
 NQF Number: 0028e

Preventive Care and Screening: Tobacco Use: Screening
 and Cessation Intervention



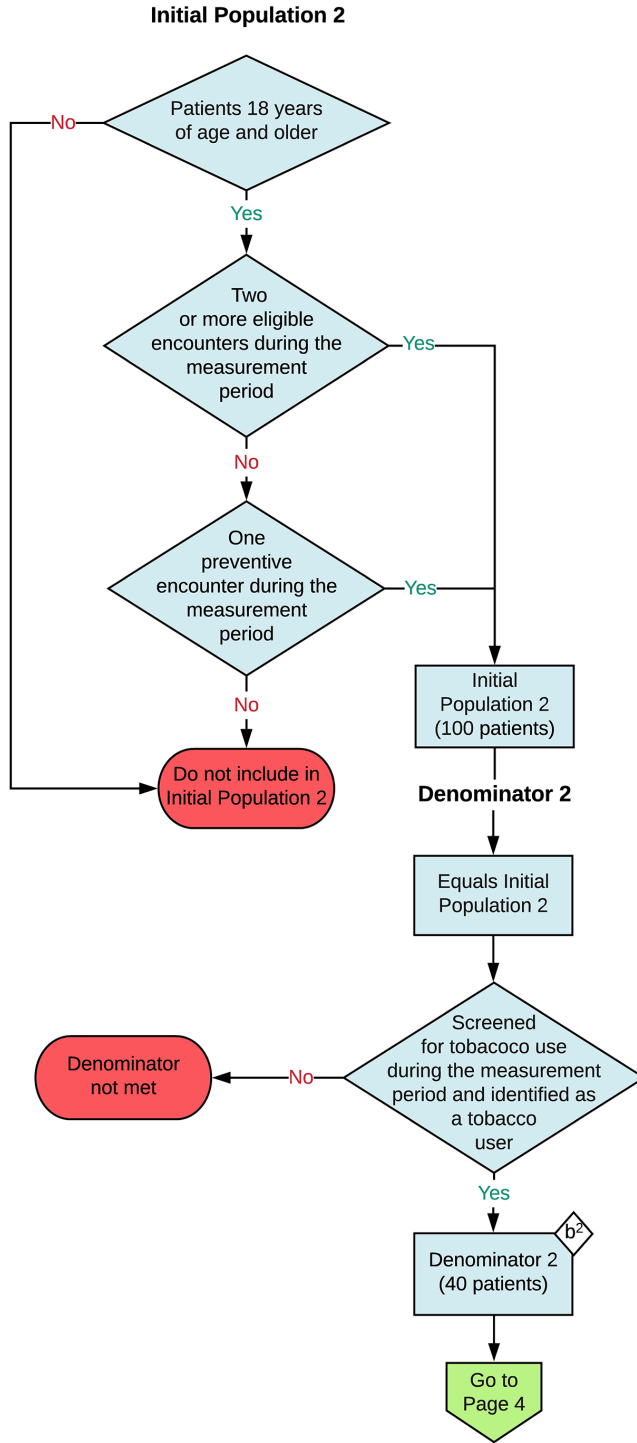
Sample Calculation: Population 1

Performance Rate 1 =

$$\frac{\text{Numerator (a}^1 = 50 \text{ patients)}}{\text{Denominator (b}^1 = 100 \text{ patients) - Denominator Exclusions (x}^1 = 20 \text{ patients)}} = \frac{50}{80} = 63\%$$

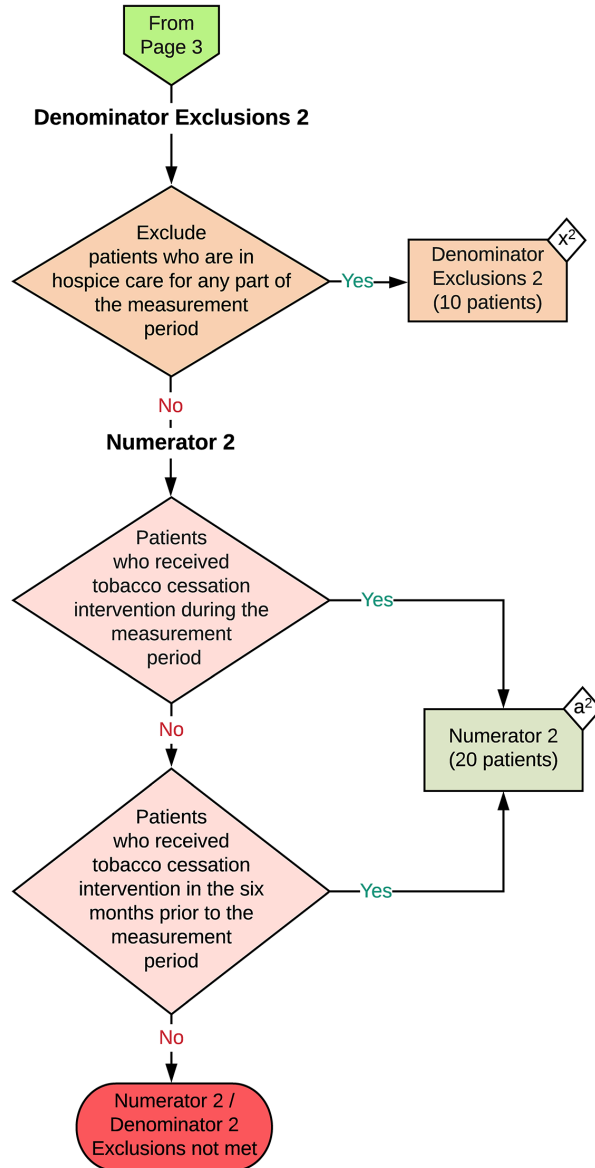
2023 eCQM Flow
 eCQM Identifier: CMS138v11
 NQF Number: 0028e

Preventive Care and Screening: Tobacco Use: Screening
 and Cessation Intervention



2023 eCQM Flow
 eCQM Identifier: CMS138v11
 NQF Number: 0028e

Preventive Care and Screening: Tobacco Use: Screening
 and Cessation Intervention



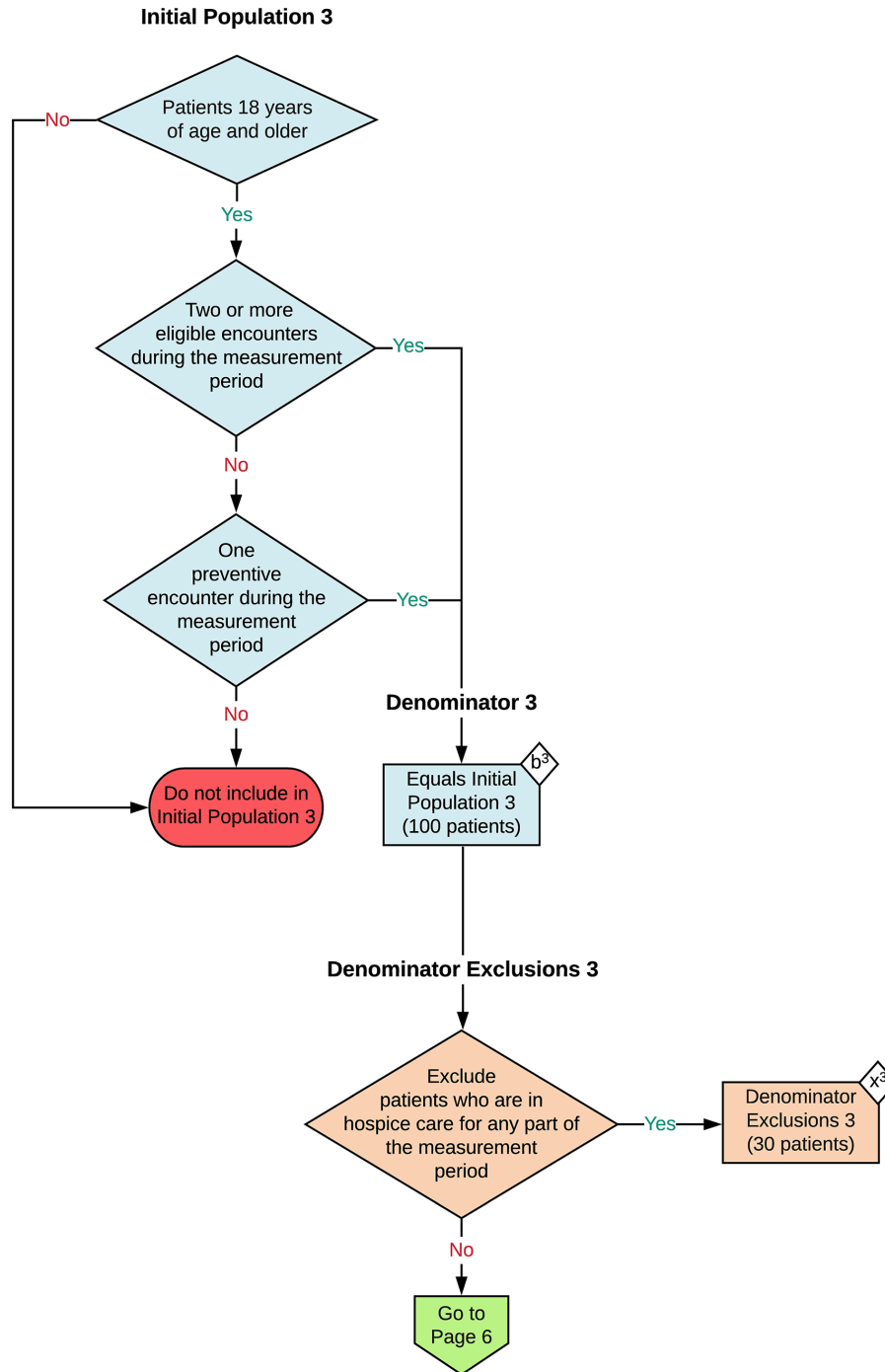
Sample Calculation: Population 2

Performance Rate 2 =

$$\frac{\text{Numerator (a}^2 = 20 \text{ patients)}}{\text{Denominator (b}^2 = 40 \text{ patients) - Denominator Exclusions (x}^2 = 10 \text{ patients)}} = \frac{20}{30} = 67\%$$

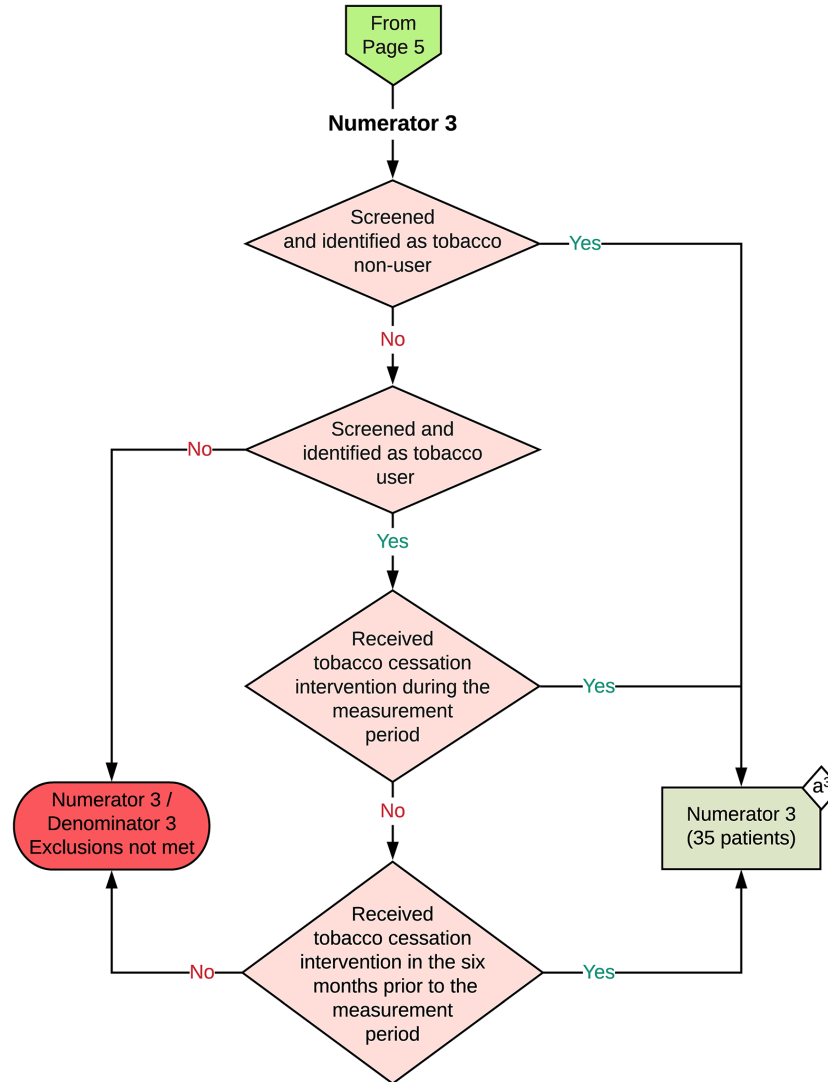
2023 eCQM Flow
eCQM Identifier: CMS138v11
NQF Number: 0028e

Preventive Care and Screening: Tobacco Use: Screening
and Cessation Intervention



2023 eCQM Flow
 eCQM Identifier: CMS138v11
 NQF Number: 0028e

Preventive Care and Screening: Tobacco Use: Screening
 and Cessation Intervention



Sample Calculation: Population 3

Performance Rate 3 =

$$\frac{\text{Numerator (a}^3 = 35 \text{ patients)}}{\text{Denominator (b}^3 = 100 \text{ patients) - Denominator Exclusions (x}^3 = 30 \text{ patients)}} = \frac{35}{70} = 50\%$$

eCQM Identifier: CMS138v11

NQF Number: 0028e

eCQM Title: Preventive Care and Screening: Tobacco Use: Screening and Cessation Intervention

NOTE: This flow diagram represents an overview of population criteria requirements. Refer to the eCQM specification for a complete list of data elements included in this measure and required for submission.

Description: Percentage of patients aged 18 years and older who were screened for tobacco use one or more times during the measurement period AND who received tobacco cessation intervention during the measurement period or in the six months prior to the measurement period if identified as a tobacco user. Three rates are reported:

- a. Percentage of patients aged 18 years and older who were screened for tobacco use one or more times during the measurement period;
- b. Percentage of patients aged 18 years and older who were identified as a tobacco user during the measurement period who received tobacco cessation intervention during the measurement period or in the six months prior to the measurement period;
- c. Percentage of patients aged 18 years and older who were screened for tobacco use one or more times during the measurement period AND who received tobacco cessation intervention during the measurement period or in the six months prior to the measurement period if identified as a tobacco user.

This eCQM is a patient-based measure.

eCQM Flow Narrative

Initial Population 1

Start by identifying the Initial Population 1, which includes patients 18 years of age and older with two or more eligible encounters or at least one preventive encounter during the measurement period.

Denominator 1

Denominator 1 equals the Initial Population 1. In the sample calculation for population 1 provided on page 2, Denominator 1 is equal to 100 patients.

Denominator Exclusions 1

The Denominator Exclusions 1 criteria identify a subset of the Denominator 1 population by excluding patients who are in hospice care for any part of the measurement period. In the sample calculation for population 1 provided on page 2, Denominator Exclusions 1 is equal to 20 patients.

Numerator 1

The Numerator 1 criteria identify a subset of the Denominator 1 population by including patients who were screened for tobacco use at least once during the measurement period and identified as either a tobacco non-user or a tobacco user. In the sample calculation for population 1 provided on page 2, Numerator 1 is equal to 50 patients.

Sample Calculation: Population 1

A sample calculation for population 1 is provided to help determine how the measure performance rate 1 is derived. The measure performance rate 1 is calculated by dividing the Numerator 1 (total equals 50

patients) by the difference between the Denominator 1 (total equals 100 patients) and the Denominator Exclusions 1 (total equals 20 patients), which is equal to a score of 63 percent.

Initial Population 2

Start by identifying the Initial Population 2, which includes patients 18 years of age and older with two or more eligible encounters or at least one preventive encounter during the measurement period.

Denominator 2

The Denominator 2 criteria further constrain the Initial Population 2 to patients who were screened for tobacco use during the measurement period and identified as a tobacco user. In the sample calculation for population 2 provided on page 4, Denominator 2 is equal to 40 patients.

Denominator Exclusions 2

The Denominator Exclusions 2 criteria identify a subset of the Denominator 2 population by excluding patients who are in hospice care for any part of the measurement period. In the sample calculation for population 2 provided on page 4, Denominator Exclusions 2 is equal to 10 patients.

Numerator 2

The Numerator 2 criteria identify a subset of the Denominator 2 population by including patients who received tobacco cessation intervention during the measurement period or in the six months prior to the measurement period. In the sample calculation for population 2 provided on page 4, Numerator 2 is equal to 20 patients.

Sample Calculation: Population 2

A sample calculation for population 2 is provided to help determine how the measure performance rate 2 is derived. The measure performance rate 2 is calculated by dividing the Numerator 2 (total equals 20 patients) by the difference between the Denominator 2 (total equals 40 patients) and the Denominator Exclusions 2 (total equals 10 patients), which is equal to a score of 67 percent.

Initial Population 3

Start by identifying the Initial Population 3, which includes patients 18 years of age and older with two or more eligible encounters or at least one preventive encounter during the measurement period.

Denominator 3

Denominator 3 equals the Initial Population 3. In the sample calculation for population 3 provided on page 6, Denominator 3 is equal to 100 patients.

Denominator Exclusions 3

The Denominator Exclusions 3 criteria identify a subset of the Denominator 3 population by excluding patients who are in hospice care for any part of the measurement period. In the sample calculation for population 3 provided on page 6, Denominator Exclusions 3 is equal to 30 patients.

Numerator 3

The Numerator 3 criteria identify a subset of the Denominator 3 population by including patients who were screened for tobacco use and identified as a tobacco non-user; OR who were screened for tobacco use and identified as a tobacco user who received tobacco cessation intervention during the measurement period or in the six months prior to the measurement period. In the sample calculation for population 3 provided on page 6, Numerator 3 is equal to 35 patients.

Sample Calculation: Population 3

A sample calculation for population 3 is provided to help determine how the measure performance rate 3 is derived. The measure performance rate 3 is calculated by dividing the Numerator 3 (total equals 35 patients) by the difference between the Denominator 3 (total equals 100 patients) and the Denominator Exclusions 3 (total equals 30 patients), which is equal to a score of 50 percent.