

2023 eCQM Flow
eCQM Identifier: CMS137v11

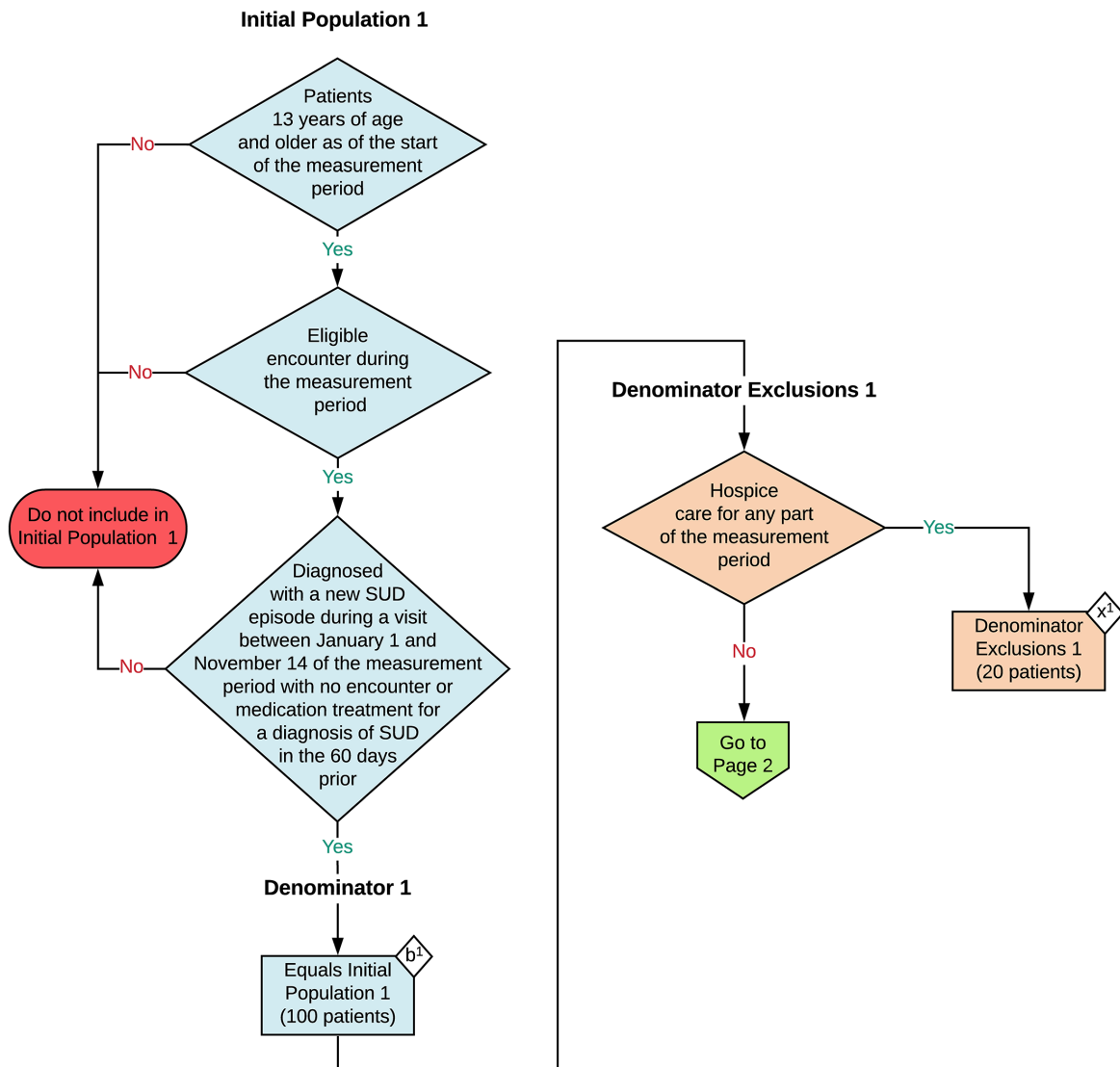
NOTE: This flow diagram represents an overview of population criteria requirements. Refer to the eCQM specification for a complete list of data elements included in this measure and required for submission.

Initiation and Engagement of Substance Use Disorder Treatment

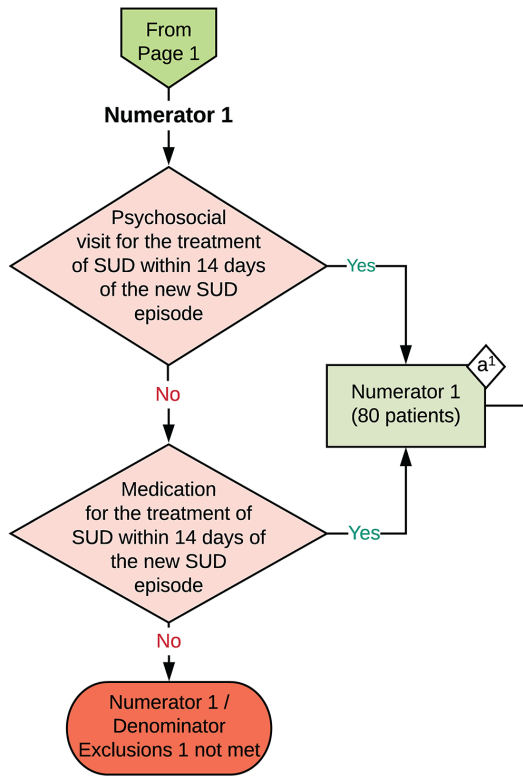
Percentage of patients 13 years of age and older with a new substance use disorder (SUD) episode who received the following (Two rates are reported):

- a. Percentage of patients who initiated treatment, including either an intervention or medication for the treatment of SUD, within 14 days of the new SUD episode.
- b. Percentage of patients who engaged in ongoing treatment, including two additional interventions or short-term medications, or one long-term medication for the treatment of SUD, within 34 days of the initiation.

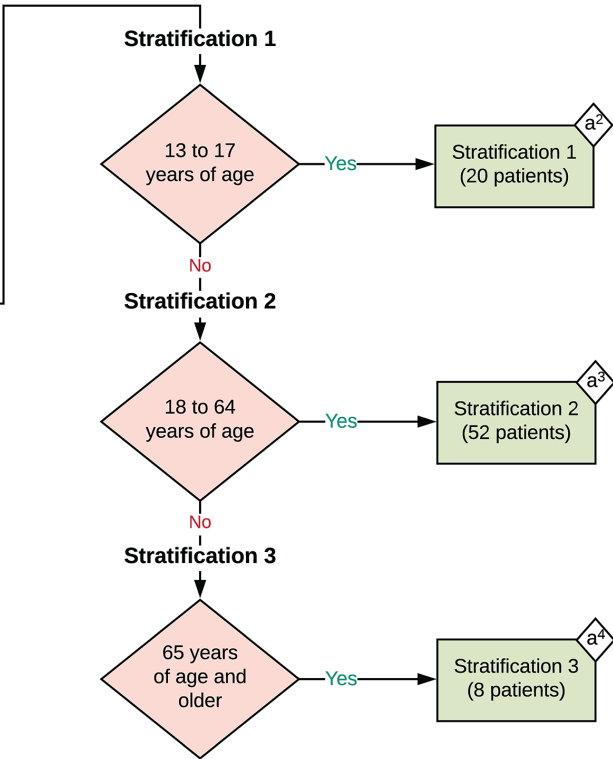
This eCQM is a patient-based measure



2023 eCQM Flow
eCQM Identifier: CMS137v11



Initiation and Engagement of Substance Use Disorder Treatment



Sample Calculation: Population 1

Performance Rate 1 =

$$\frac{\text{Numerator 1 (a}^1 = 80 \text{ patients)}}{\text{Denominator 1 (b}^1 = 100 \text{ patients) - Denominator Exclusions 1 (x}^1 = 20 \text{ patients)}} = \frac{80}{80} = 100\%$$

Stratification 1 of Performance Rate 1 =

$$\frac{\text{Numerator 1 (a}^2 = 20 \text{ patients)}}{\text{Denominator 1 (b}^1 = 100 \text{ patients) - Denominator Exclusions 1 (x}^1 = 20 \text{ patients)}} = \frac{20}{80} = 25\%$$

Stratification 2 of Performance Rate 1 =

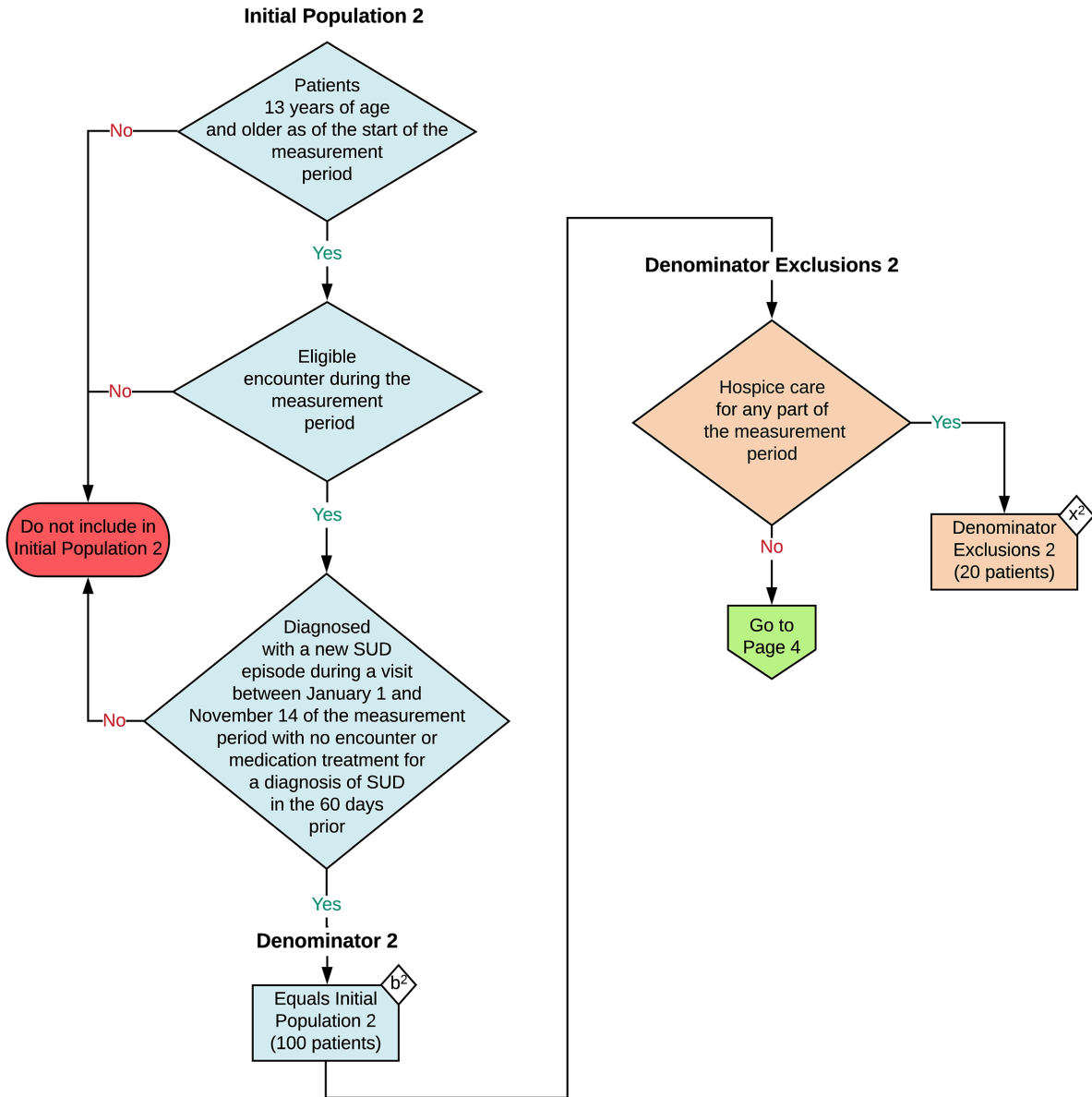
$$\frac{\text{Numerator 1 (a}^3 = 52 \text{ patients)}}{\text{Denominator 1 (b}^1 = 100 \text{ patients) - Denominator Exclusions 1 (x}^1 = 20 \text{ patients)}} = \frac{52}{80} = 65\%$$

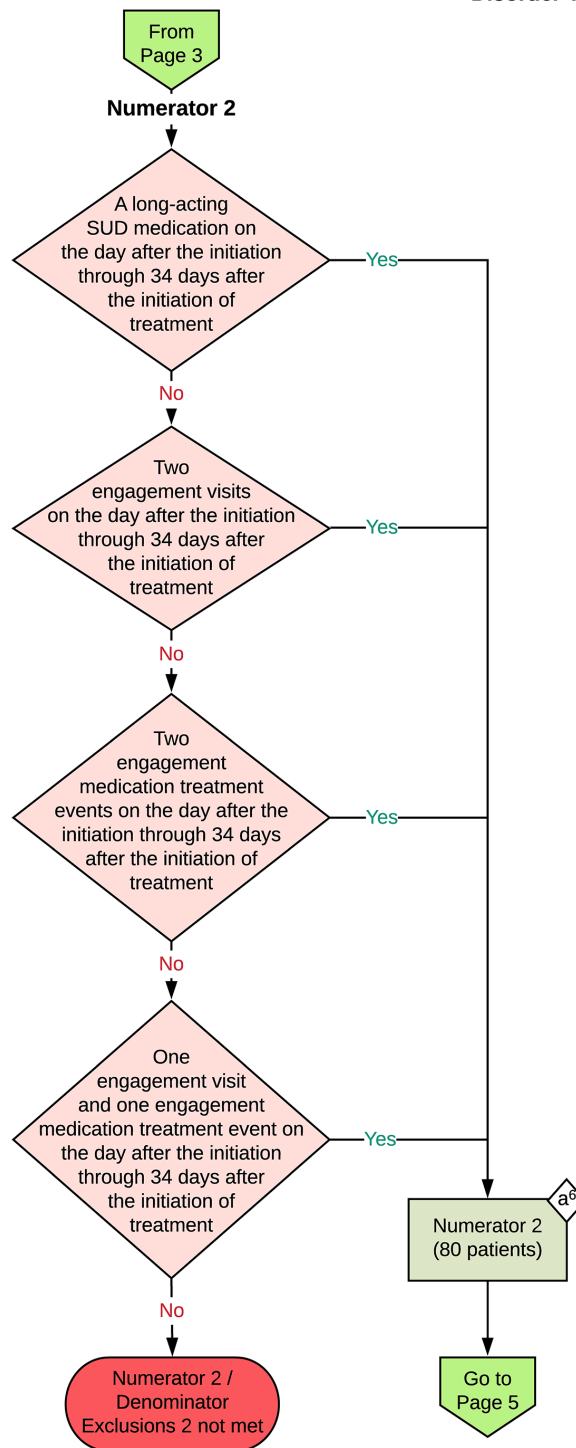
Stratification 3 of Performance Rate 3 =

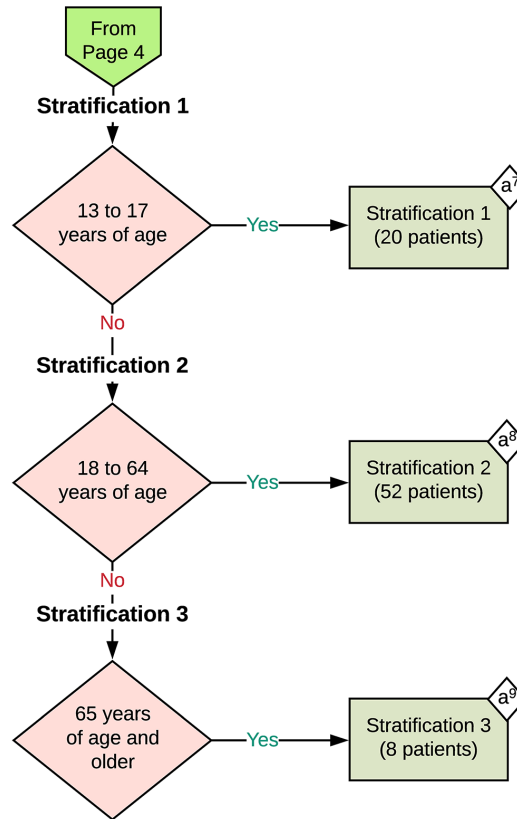
$$\frac{\text{Numerator 1 (a}^4 = 8 \text{ patients)}}{\text{Denominator 1 (b}^1 = 100 \text{ patients) - Denominator Exclusions 1 (x}^1 = 20 \text{ patients)}} = \frac{8}{80} = 10\%$$

2023 eCQM Flow
eCQM Identifier: CMS137v11

Initiation and Engagement of Substance Use
Disorder Treatment







Sample Calculation: Population 2

Performance Rate 2 =

$$\frac{\text{Numerator 2 (a}^6 = 80 \text{ patients)}}{\text{Denominator 2 (b}^2 = 100 \text{ patients) - Denominator Exclusions 2 (x}^2 = 20 \text{ patients)}} = \frac{80}{80} = 100 \%$$

Stratification 1 of Performance Rate 2 =

$$\frac{\text{Numerator 2 (a}^7 = 20 \text{ patients)}}{\text{Denominator 2 (b}^2 = 100 \text{ patients) - Denominator Exclusions 2 (x}^2 = 20 \text{ patients)}} = \frac{20}{80} = 25 \%$$

Stratification 2 of Performance Rate 2 =

$$\frac{\text{Numerator 2 (a}^8 = 52 \text{ patients)}}{\text{Denominator 2 (b}^2 = 100 \text{ patients) - Denominator Exclusions 2 (x}^2 = 20 \text{ patients)}} = \frac{52}{80} = 65 \%$$

Stratification 3 of Performance Rate 2 =

$$\frac{\text{Numerator 2 (a}^9 = 8 \text{ patients)}}{\text{Denominator 2 (b}^2 = 100 \text{ patients) - Denominator Exclusions 2 (x}^2 = 20 \text{ patients)}} = \frac{8}{80} = 10 \%$$

eCQM Identifier: CMS137v11**eCQM Title: Initiation and Engagement of Substance Use Disorder Treatment**

NOTE: This flow diagram represents an overview of population criteria requirements. Refer to the eCQM specification for a complete list of data elements included in this measure and required for submission.

Description: Percentage of patients 13 years of age and older with a new substance use disorder (SUD) episode who received the following (Two rates are reported):

- a. Percentage of patients who initiated treatment including either an intervention or medication for the treatment of SUD, within 14 days of the new SUD episode.
- b. Percentage of patients who engaged in ongoing treatment including two additional interventions or short-term medications, or one long-term medication for the treatment of SUD within 34 days of the initiation.

This eCQM is a patient-based measure.

eCQM Flow Narrative**Initial Population 1**

Start by identifying the Initial Population 1, which includes patients 13 years of age and older as of the start of the measurement period with an eligible encounter during the measurement period, who were diagnosed with a new SUD episode during a visit between January 1 and November 14 of the measurement period with no encounter or medication treatment for a diagnosis of SUD in the 60 days prior.

Denominator 1

Denominator 1 is equal to the Initial Population 1. In the sample calculation provided at the end of the eCQM flow, Denominator 1 is equal to 100 patients.

Denominator Exclusions 1

The Denominator Exclusions 1 criteria identify a subset of the Denominator 1 population by excluding patients who are in hospice care for any part of the measurement period. In the sample calculation provided at the end of the eCQM flow, the Denominator Exclusions 1 are equal to 20 patients.

Numerator 1

The Numerator 1 criteria identify a subset of the Denominator 1 population (that did not meet the Denominator Exclusions 1 criteria) by including patients whose initiation of treatment included either an intervention or a medication for the treatment of SUD within 14 days of the new SUD episode. In the sample calculation provided at the end of the eCQM flow, Numerator 1 is equal to 80 patients.

Stratification 1

There are three strata for reporting separately by age group. Stratification 1 includes patients 13 to 17 years of age. In the sample calculation provided at the end of the eCQM flow, Stratification 1 is equal to 20 patients.

Stratification 2

There are three strata for reporting separately by age group. Stratification 2 includes patients 18 to 64 years of age. In the sample calculation provided at the end of the eCQM flow, Stratification 2 is equal to 52 patients.

Stratification 3

There are three strata for reporting separately by age group. Stratification 3 includes patients 65 years of age and older. In the sample calculation provided at the end of the eCQM flow, Stratification 3 is equal to 8 patients.

Sample Calculation: Population 1

A sample calculation for population 1 is provided to help determine how the measure performance rate 1 is derived. The measure performance rate 1 is calculated by dividing the Numerator 1 (total equals 80 patients) by the difference between the Denominator 1 (total equals 100 patients) and the Denominator Exclusions 1 (total equals 20 patients), which is equal to a score of 100 percent. Stratification 1 of performance rate 1 is calculated by dividing the Numerator 1 of Stratification 1 (total equals 20 patients) by the difference between the Denominator 1 (total equals 100 patients) and the Denominator Exclusions 1 (total equals 20 patients), which is equal to a score of 25 percent. Stratification 2 of performance rate 1 is calculated by dividing the Numerator 1 of Stratification 2 (total equals 52 patients) by the difference between the Denominator 1 (total equals 100 patients) and the Denominator Exclusions 1 (total equals 20 patients), which is equal to a score of 65 percent. Stratification 3 of performance rate 1 is calculated by dividing the Numerator 1 of Stratification 3 (total equals 8 patients) by the difference between the Denominator 1 (total equals 100 patients) and the Denominator Exclusions 1 (total equals 20 patients), which is equal to a score of 10 percent.

Initial Population 2

Continue by identifying the Initial Population 2, which includes patients 13 years of age and older as of the start of the measurement period with an eligible encounter during the measurement period, who were diagnosed with a new SUD episode during a visit between January 1 and November 14 of the measurement period with no encounter or medication treatment for a diagnosis of SUD in the 60 days prior.

Denominator 2

Denominator 2 is equal to the Initial Population 2. In the sample calculation provided at the end of the eCQM flow, Denominator 2 is equal to 100 patients.

Denominator Exclusions 2

The Denominator Exclusions 2 criteria identify a subset of the Denominator 2 population by excluding patients who are in hospice care for any part of the measurement period. In the sample calculation provided at the end of the eCQM flow, the Denominator Exclusions 2 are equal to 20 patients.

Numerator 2

The Numerator 2 criteria identify a subset of the Denominator 2 population (that did not meet the Denominator Exclusions 2 criteria) by including patients who continued treatment with a long-acting SUD medication on the day after initiation through 34 days after the initiation of treatment, or who continued treatment on the day after initiation through 34 days after the initiation of treatment with one of the following options: a) two engagement visits, b) two engagement medication treatment events, c) one engagement visit and one engagement medication treatment event. In the sample calculation provided at the end of the eCQM flow, Numerator 2 is equal to 80 patients.

Stratification 1

There are three strata for reporting separately by age group. Stratification 1 includes patients 13 to 17 years of age. In the sample calculation provided at the end of the eCQM flow, Stratification 1 is equal to 20 patients.

Stratification 2

There are three strata for reporting separately by age group. Stratification 2 includes patients 18 to 64 years of age. In the sample calculation provided at the end of the eCQM flow, Stratification 2 is equal to 52 patients.

Stratification 3

There are three strata for reporting separately by age group. Stratification 3 includes patients 65 years of age and older. In the sample calculation provided at the end of the eCQM flow, Stratification 3 is equal to 8 patients.

Sample Calculation: Population 2

A sample calculation for population 2 is provided to help determine how the measure performance rate 2 is derived. The measure performance rate 2 is calculated by dividing the Numerator 2 (total equals 80 patients) by the difference between the Denominator 2 (total equals 100 patients) and the Denominator Exclusions 2 (total equals 20 patients), which is equal to a score of 100 percent. Stratification 1 of performance rate 2 is calculated by dividing the Numerator 2 of Stratification 1 (total equals 20 patients) by the difference between the Denominator 2 (total equals 100 patients) and the Denominator Exclusions 2 (total equals 20 patients), which is equal to a score of 25 percent. Stratification 2 of performance rate 2 is calculated by dividing the Numerator 2 of Stratification 2 (total equals 52 patients) by the difference between the Denominator 2 (total equals 100 patients) and the Denominator Exclusions 2 (total equals 20 patients), which is equal to a score of 65 percent. Stratification 3 of performance rate 2 is calculated by dividing the Numerator 2 of Stratification 3 (total equals 8 patients) by the difference between the Denominator 2 (total equals 100 patients) and the Denominator Exclusions 2 (total equals 20 patients), which is equal to a score of 10 percent.