

2023 eCQM Flow
eCQM Identifier: CMS136v12

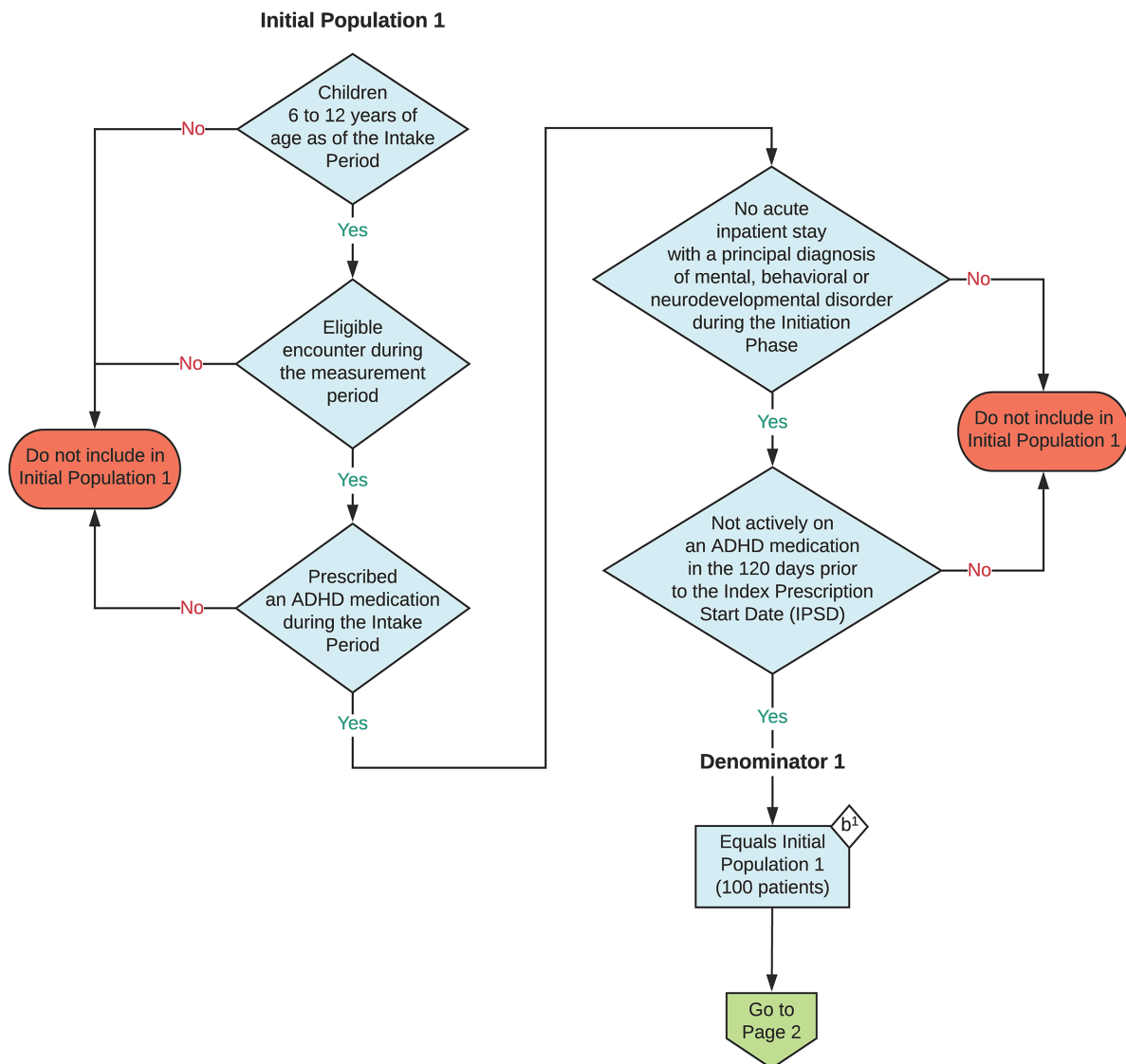
NOTE: This flow diagram represents an overview of population criteria requirements. Refer to the eCQM specification for a complete list of data elements included in this measure and required for submission.

Follow-Up Care for Children Prescribed ADHD Medication (ADD)

Percentage of children 6-12 years of age and newly prescribed a medication for attention-deficit/hyperactivity disorder (ADHD) who had appropriate follow-up care. Two rates are reported.

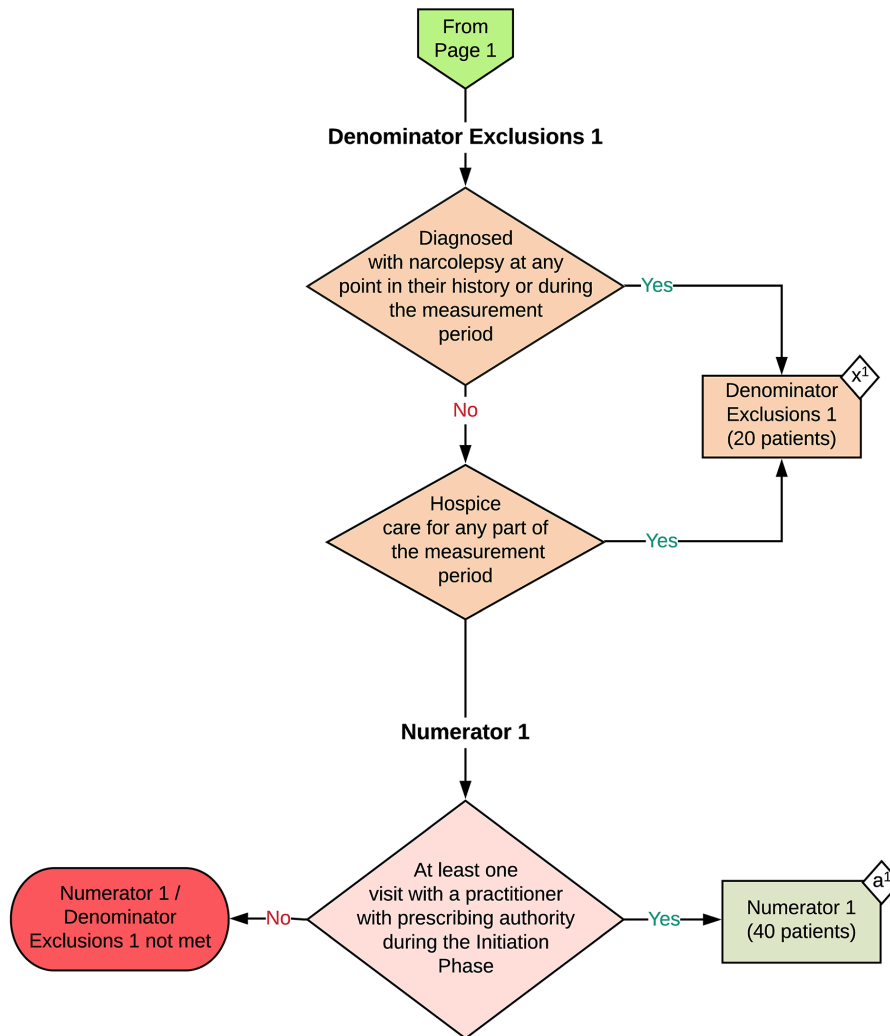
- a. Percentage of children who had one follow-up visit with a practitioner with prescribing authority during the 30-Day Initiation Phase.
- b. Percentage of children who remained on ADHD medication for at least 210 days and who, in addition to the visit in the Initiation Phase, had at least two additional follow-up visits with a practitioner within 270 days (9 months) after the Initiation Phase ended

This eCQM is a patient-based measure



2023 eCQM Flow
eCQM Identifier: CMS136v12

Follow-Up Care for Children Prescribed
ADHD Medication (ADD)



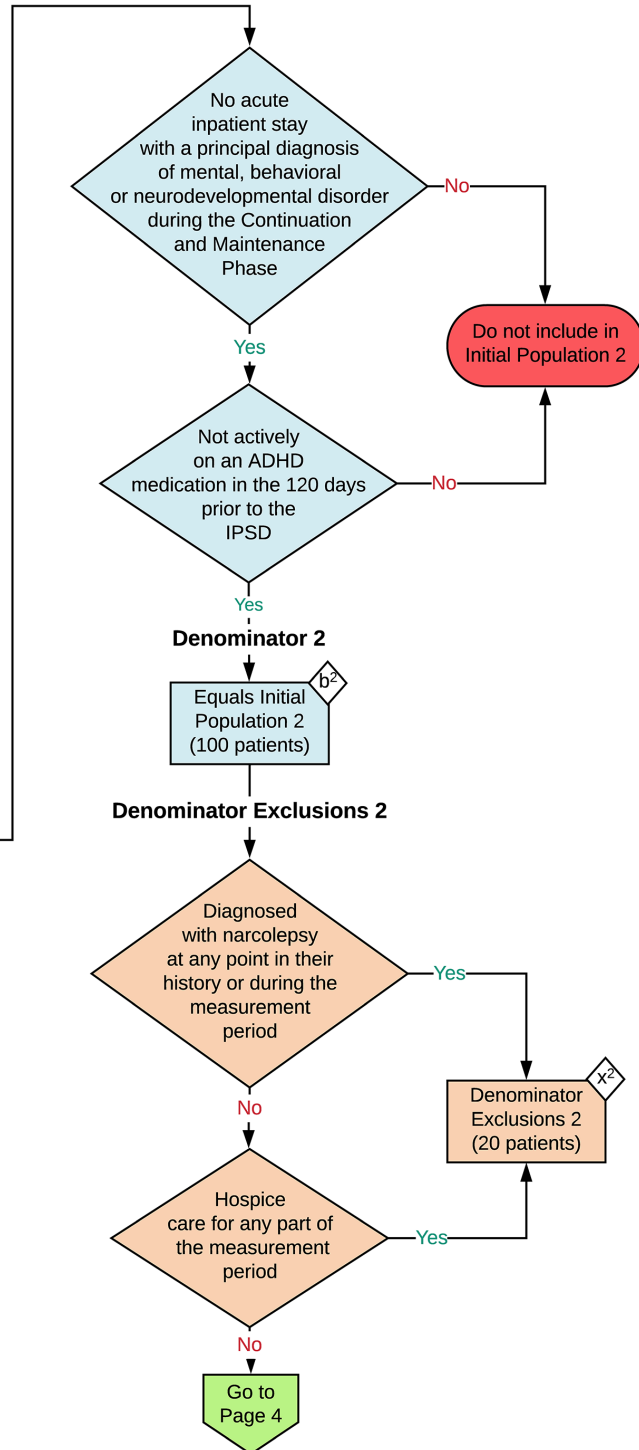
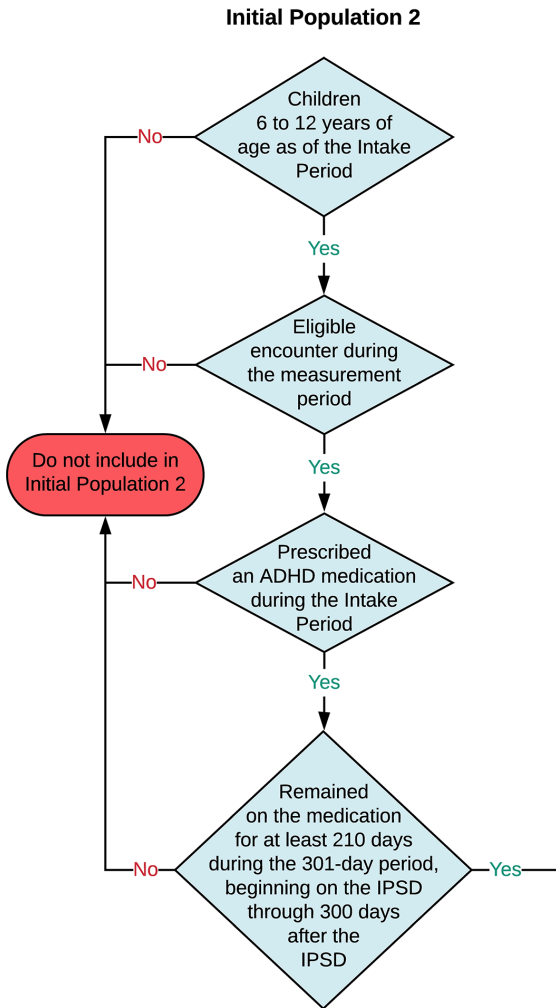
Sample Calculation: Population 1

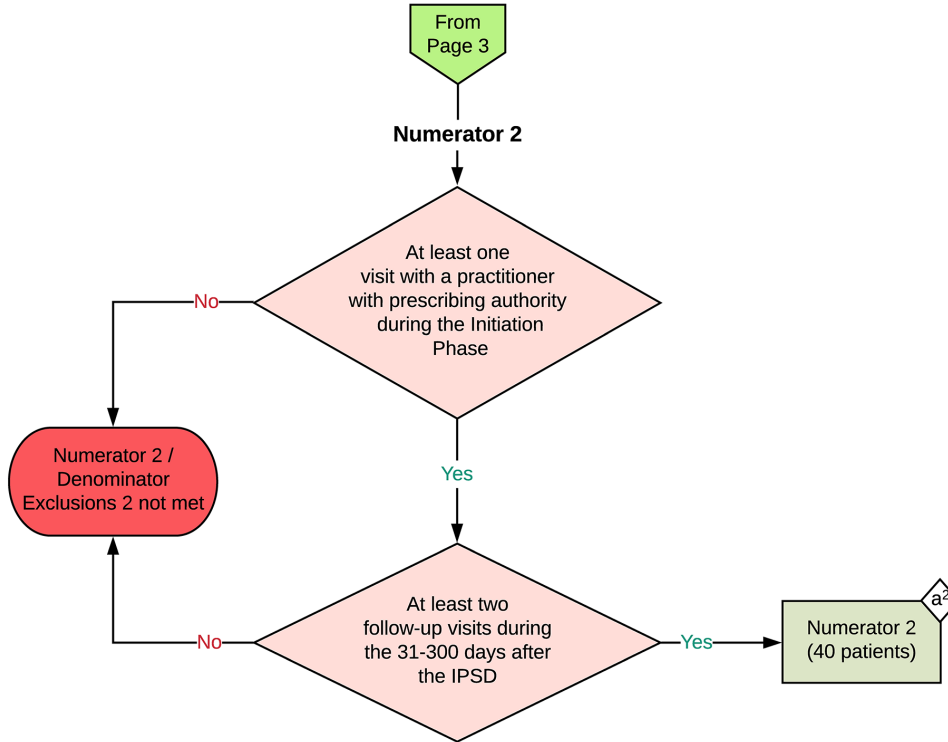
Performance Rate 1 =

$$\frac{\text{Numerator 1 (a}^1 = 40 \text{ patients)}}{\text{Denominator 1 (b}^1 = 100 \text{ patients) - Denominator Exclusions 1 (x}^1 = 20 \text{ patients)}} = \frac{40}{80} = 50\%$$

2023 eCQM Flow
eCQM Identifier: CMS136v12

Follow-Up Care for Children Prescribed
ADHD Medication (ADD)





Sample Calculation: Population 2

Performance Rate 2 =

$$\frac{\text{Numerator 2 (a}^2 = 40 \text{ patients)}}{\text{Denominator 2 (b}^2 = 100 \text{ patients) - Denominator Exclusions 2 (x}^2 = 20 \text{ patients)}} = \frac{40}{80} = 50 \%$$

eCQM Identifier: CMS136v12**eCQM Title: Follow-Up Care for Children Prescribed ADHD Medication (ADD)**

NOTE: This flow diagram represents an overview of population criteria requirements. Refer to the eCQM specification for a complete list of data elements included in this measure and required for submission.

Description: Percentage of children 6 to 12 years of age and newly prescribed a medication for attention-deficit/hyperactivity disorder (ADHD) who had appropriate follow-up care. Two rates are reported.

- a. Percentage of children who had one follow-up visit with a practitioner with prescribing authority during the 30-Day Initiation Phase.
- b. Percentage of children who remained on ADHD medication for at least 210 days and who, in addition to the visit in the Initiation Phase, had at least two additional follow-up visits with a practitioner within 270 days (9 months) after the Initiation Phase ended.

This eCQM is a patient-based measure.

eCQM Flow Narrative**Initial Population 1**

Start by identifying the Initial Population 1, which includes children 6 to 12 years of age as of the Intake Period with an eligible encounter during the measurement period who were prescribed an ADHD medication during the Intake Period. Children are removed if they were actively on ADHD medication in the 120 days prior to the IPSD, or had an acute inpatient stay with a principal diagnosis of mental, behavioral or neurodevelopmental disorder during the Initiation Phase.

Denominator 1

The Denominator 1 equals the Initial Population 1. In the sample calculation provided at the end of the eCQM flow, Denominator 1 is equal to 100 patients.

Denominator Exclusions 1

The Denominator Exclusions 1 criteria identify a subset of the Denominator 1 population by excluding patients diagnosed with narcolepsy at any point in the history or during the measurement period, and patients who are in hospice care for any part of the measurement period. In the sample calculation provided at the end of the eCQM flow, the Denominator Exclusions 1 are equal to 20 patients.

Numerator 1

The Numerator 1 criteria identify a subset of the Denominator 1 population (that did not meet the Denominator Exclusions 1 criteria) by including patients who had at least one visit with a practitioner with prescribing authority during the Initiation Phase. In the sample calculation provided at the end of the eCQM flow, Numerator 1 is equal to 40 patients.

Sample Calculation: Population 1

A sample calculation for population 1 is provided to help determine how the measure performance rate 1 is derived. The measure performance rate 1 is calculated by dividing the Numerator 1 (total equals 40 patients) by the difference between the Denominator 1 (total equals 100 patients) and the Denominator Exclusions 1 (total equals 20 patients), which is equal to a score of 50 percent.

Initial Population 2

Continue by identifying the Initial Population 2, which includes children 6 to 12 years of age as of the Intake Period with an eligible encounter during the measurement period who were prescribed an ADHD medication during the Intake Period and who remained on the medication for at least 210 days during the 301-day period, beginning on the IPSD through 300 days after the IPSD. Children are removed if they were actively on ADHD medication in the 120 days prior to the IPSD, or had an acute inpatient stay with a principal diagnosis of mental, behavioral or neurodevelopmental disorder during the Continuation and Maintenance Phase.

Denominator 2

The Denominator 2 equals the Initial Population 2. In the sample calculation provided at the end of the eCQM flow, Denominator 2 is equal to 100 patients.

Denominator Exclusions 2

The Denominator Exclusions 2 criteria identify a subset of the Denominator 2 population by excluding patients diagnosed with narcolepsy at any point in the history or during the measurement period, and patients who are in hospice care for any part of the measurement period. In the sample calculation provided at the end of the eCQM flow, the Denominator Exclusions 2 are equal to 20 patients.

Numerator 2

The Numerator 2 criteria identify a subset of the Denominator 2 population (that did not meet the Denominator Exclusions 2 criteria) by including patients who had at least one visit with a practitioner with prescribing authority during the Initiation Phase and at least two follow-up visits during the 31-300 days after the IPSD. In the sample calculation provided at the end of the eCQM flow, Numerator 2 is equal to 40 patients.

Sample Calculation: Population 2

A sample calculation for population 2 is provided to help determine how the measure performance rate 2 is derived. The measure performance rate 2 is calculated by dividing the Numerator 2 (total equals 40 patients) by the difference between the Denominator 2 (total equals 100 patients) and the Denominator Exclusions 2 (total equals 20 patients), which is equal to a score of 50 percent.