

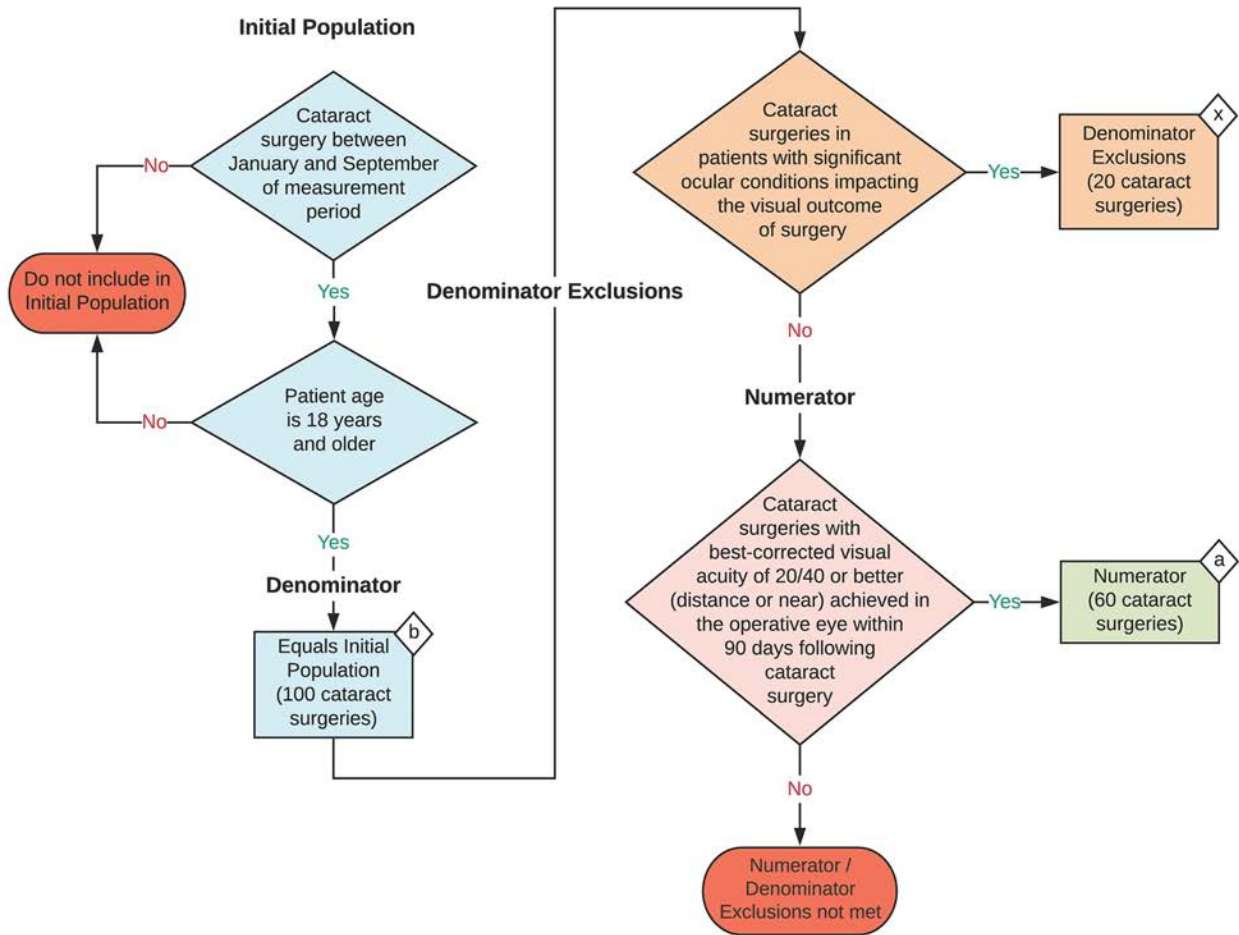
**2025 eCQM Flow**  
**eCQM Identifier: CMS133v13**  
**CBE Number: 0565e**

**NOTE:** This flow diagram represents an overview of population criteria requirements. Refer to the eCQM specification for a complete list of data elements included in this measure and required for submission.

**Cataracts: 20/40 or Better Visual Acuity within 90 Days Following Cataract Surgery**

Percentage of cataract surgeries for patients aged 18 and older with a diagnosis of uncomplicated cataract and no significant ocular conditions impacting the visual outcome of surgery and had best-corrected visual acuity of 20/40 or better (distance or near) achieved in the operative eye within 90 days following the cataract surgery

This eCQM is an episode-based measure



**Sample Calculation**

**Performance Rate =**

$$\frac{\text{Numerator (a = 60 cataract surgeries)}}{\text{Denominator (b = 100 cataract surgeries) - Denominator Exclusions (x = 20 cataract surgeries)}} = \frac{60}{80} = 75\%$$

**eCQM Identifier: CMS133v13****CBE Number: 0565e****eCQM Title: Cataracts: 20/40 or Better Visual Acuity within 90 Days Following Cataract Surgery**

**NOTE:** This flow diagram represents an overview of population criteria requirements. Refer to the eCQM specification for a complete list of data elements included in this measure and required for submission.

**Description:** Percentage of cataract surgeries for patients aged 18 and older with a diagnosis of uncomplicated cataract and no significant ocular conditions impacting the visual outcome of surgery and had best-corrected visual acuity of 20/40 or better (distance or near) achieved in the operative eye within 90 days following the cataract surgery.

**This eCQM is an episode-based measure.**

**eCQM Flow Narrative****Initial Population**

Start by identifying the Initial Population, which includes cataract surgeries between January and September of the measurement period for patients 18 years of age and older.

**Denominator**

The Denominator equals the Initial Population. In the sample calculation provided at the end of the eCQM flow, the Denominator is equal to 100 cataract surgeries.

**Denominator Exclusions**

The Denominator Exclusions criteria identify a subset of the Denominator population by excluding cataract surgeries in patients with significant ocular conditions impacting the visual outcome of surgery. In the sample calculation provided at the end of the eCQM flow, the Denominator Exclusions are equal to 20 cataract surgeries.

**Numerator**

The Numerator criteria identify a subset of the Denominator population (that did not meet the Denominator Exclusions criteria) by including cataract surgeries with best-corrected visual acuity of 20/40 or better (distance or near) achieved in the operative eye within 90 days following cataract surgery. In the sample calculation provided at the end of the eCQM flow, the Numerator is equal to 60 cataract surgeries.

**Sample Calculation**

A sample calculation is provided to help determine how the measure performance rate is derived. The measure performance rate is calculated by dividing the Numerator (total equals 60 cataract surgeries) by the difference between the Denominator (total equals 100 cataract surgeries) and the Denominator Exclusions (total equals 20 cataract surgeries), which is equal to a score of 75 percent.