

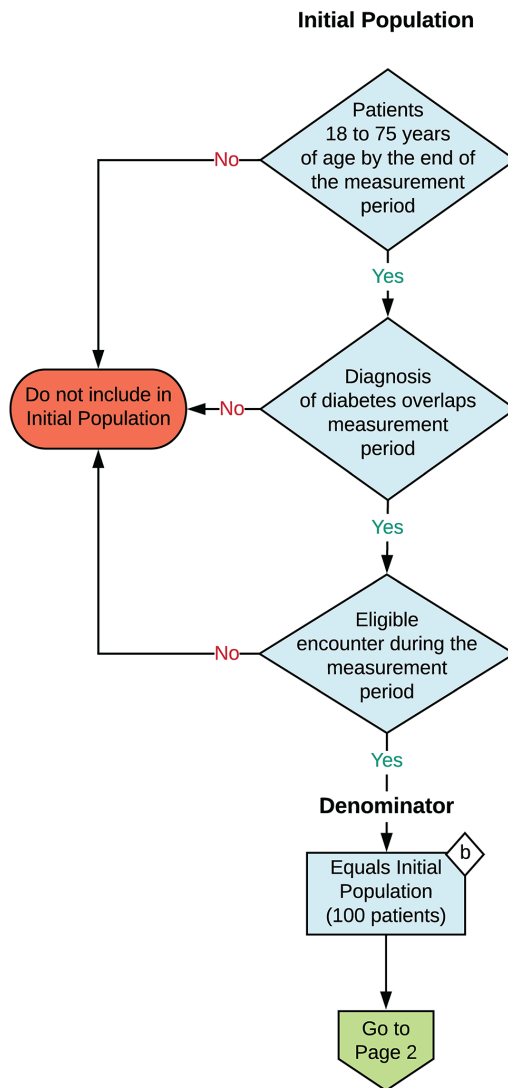
2024 eCQM Flow
eCQM Identifier: CMS131v12

NOTE: This flow diagram represents an overview of population criteria requirements. Refer to the eCQM specification for a complete list of data elements included in this measure and required for submission.

Diabetes: Eye Exam

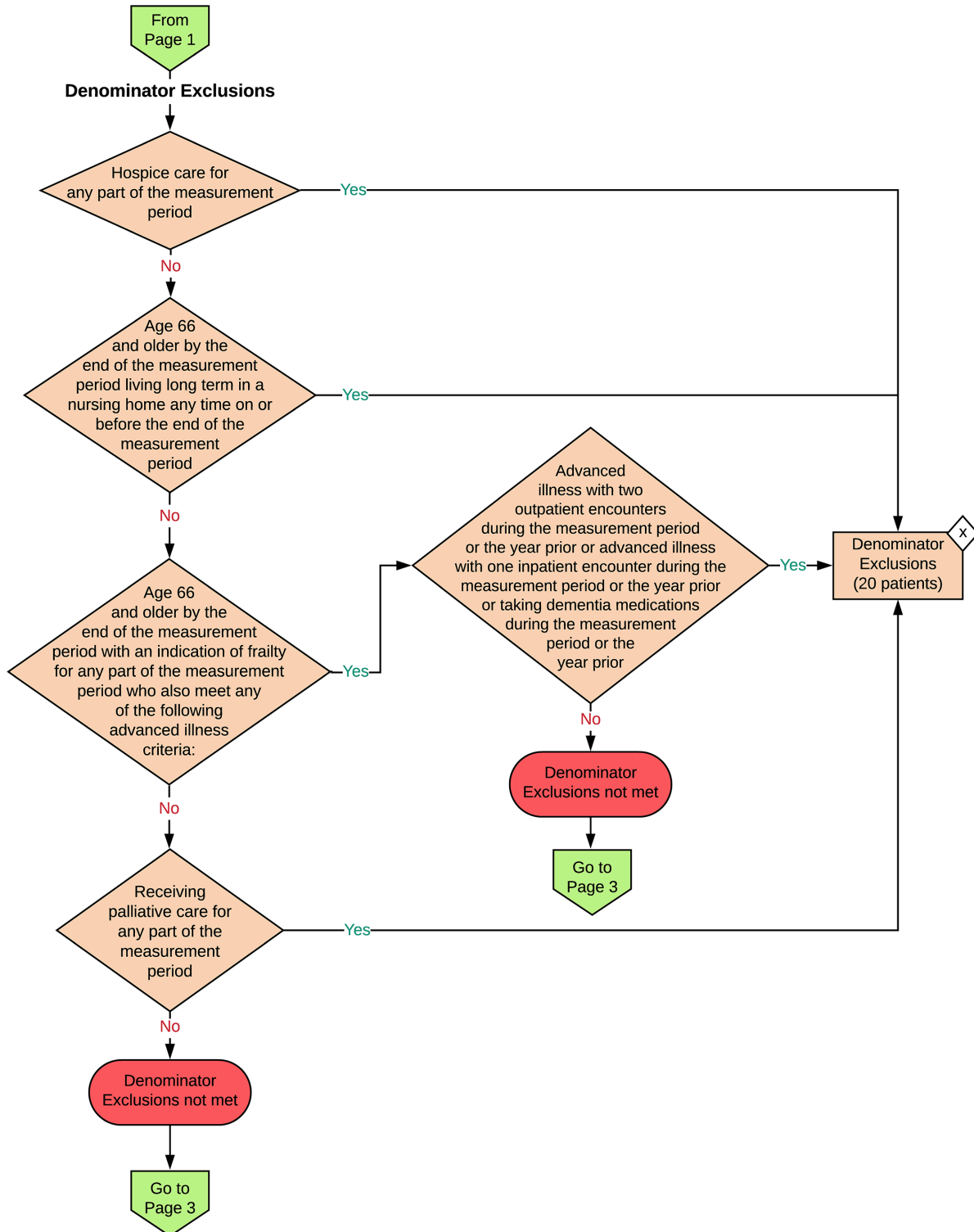
Percentage of patients 18-75 years of age with diabetes and an active diagnosis of retinopathy in any part of the measurement period who had a retinal or dilated eye exam by an eye care professional during the measurement period or diabetics with no diagnosis of retinopathy in any part of the measurement period who had a retinal or dilated eye exam by an eye care professional during the measurement period or in the 12 months prior to the measurement period

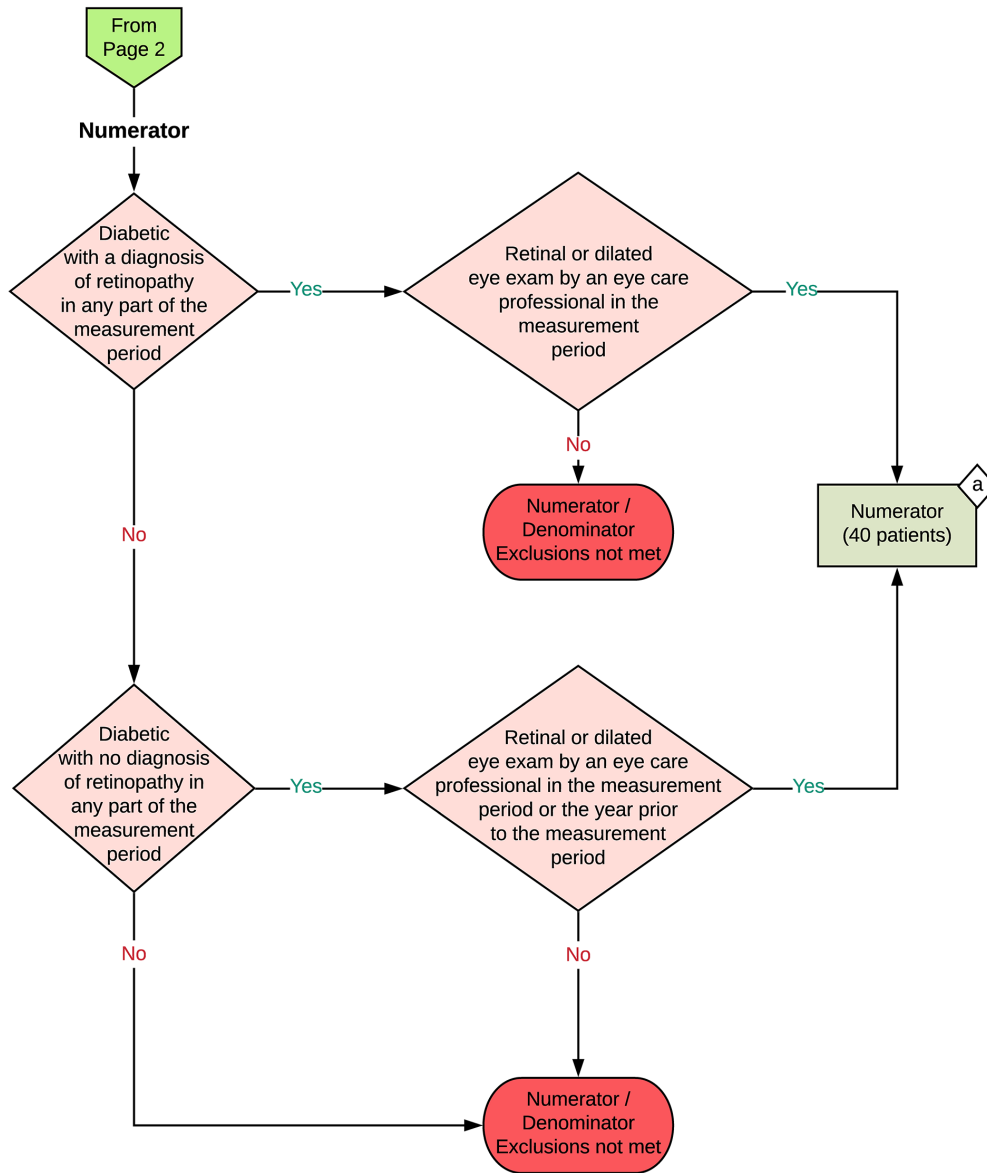
This eCQM is a patient-based measure



2024 eCQM Flow
eCQM Identifier: CMS131v12

Diabetes: Eye Exam





Sample Calculation

Performance Rate =

$$\frac{\text{Numerator (a = 40 patients)}}{\text{Denominator (b = 100 patients) - Denominator Exclusions (x = 20 patients)}} = \frac{40}{80} = 50\%$$

eCQM Identifier: CMS131v12
eCQM Title: Diabetes: Eye Exam

NOTE: This flow diagram represents an overview of population criteria requirements. Refer to the eCQM specification for a complete list of data elements included in this measure and required for submission.

Description: Percentage of patients 18 to 75 years of age with diabetes and an active diagnosis of retinopathy in any part of the measurement period who had a retinal or dilated eye exam by an eye care professional during the measurement period or diabetics with no diagnosis of retinopathy in any part of the measurement period who had a retinal or dilated eye exam by an eye care professional during the measurement period or in the 12 months prior to the measurement period.

This eCQM is a patient-based measure.

eCQM Flow Narrative

Initial Population

Start by identifying the Initial Population, which includes patients 18 to 75 years of age by the end of the measurement period with a diagnosis of diabetes which overlaps the measurement period and an eligible encounter during the measurement period.

Denominator

The Denominator equals the Initial Population. In the sample calculation provided at the end of the eCQM flow, the Denominator is equal to 100 patients.

Denominator Exclusions

The Denominator Exclusions criteria identify a subset of the Denominator population by excluding patients who are in hospice care for any part of the measurement period, patients age 66 and older by the end of the measurement period who are living long term in a nursing home any time on or before the end of the measurement period, patients age 66 and older by the end of the measurement period with frailty for any part of the measurement period and advanced illness with two outpatient encounters during the measurement period or the year prior, patients age 66 and older by the end of the measurement period with frailty for any part of the measurement period and advanced illness with one inpatient encounter during the measurement period or the year prior, patients age 66 and older by the end of the measurement period with frailty for any part of the measurement period and taking dementia medications during the measurement period or the year prior, and patients who are receiving palliative care for any part of the measurement period. In the sample calculation provided at the end of the eCQM flow, the Denominator Exclusions are equal to 20 patients.

Numerator

The Numerator criteria identify a subset of the Denominator population (that did not meet the Denominator Exclusions criteria) by including patients who are either diabetic with a diagnosis of retinopathy in any part of the measurement period and had a retinal or dilated eye exam by an eye care professional in the measurement period, or are diabetic with no diagnosis of retinopathy in any part of the measurement period and had a retinal or dilated eye exam by an eye care professional in the measurement period or in the year prior. In the sample calculation provided at the end of the eCQM flow, the Numerator is equal to 40 patients.

Sample Calculation

A sample calculation is provided to help determine how the measure performance rate is derived. The measure performance rate is calculated by dividing the Numerator (total equals 40 patients) by the difference between the Denominator (total equals 100 patients) and the Denominator Exclusions (total equals 20 patients), which is equal to a score of 50 percent.