

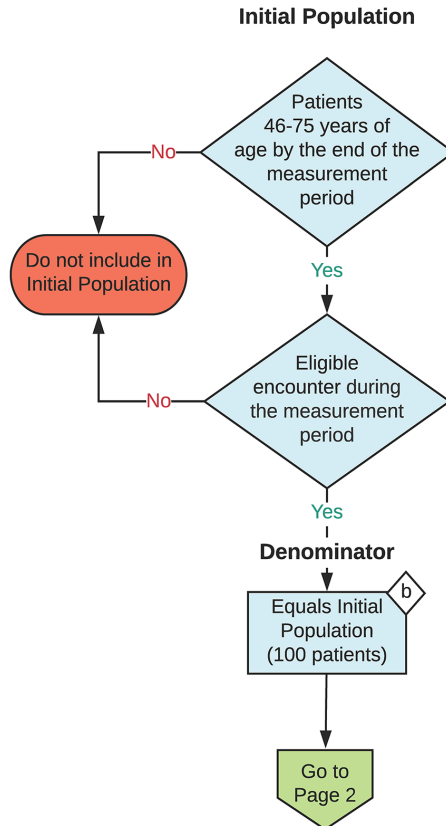
2023 eCQM Flow
eCQM Identifier: CMS130v11

NOTE: This flow diagram represents an overview of population criteria requirements. Refer to the eCQM specification for a complete list of data elements included in this measure and required for submission.

Colorectal Cancer Screening

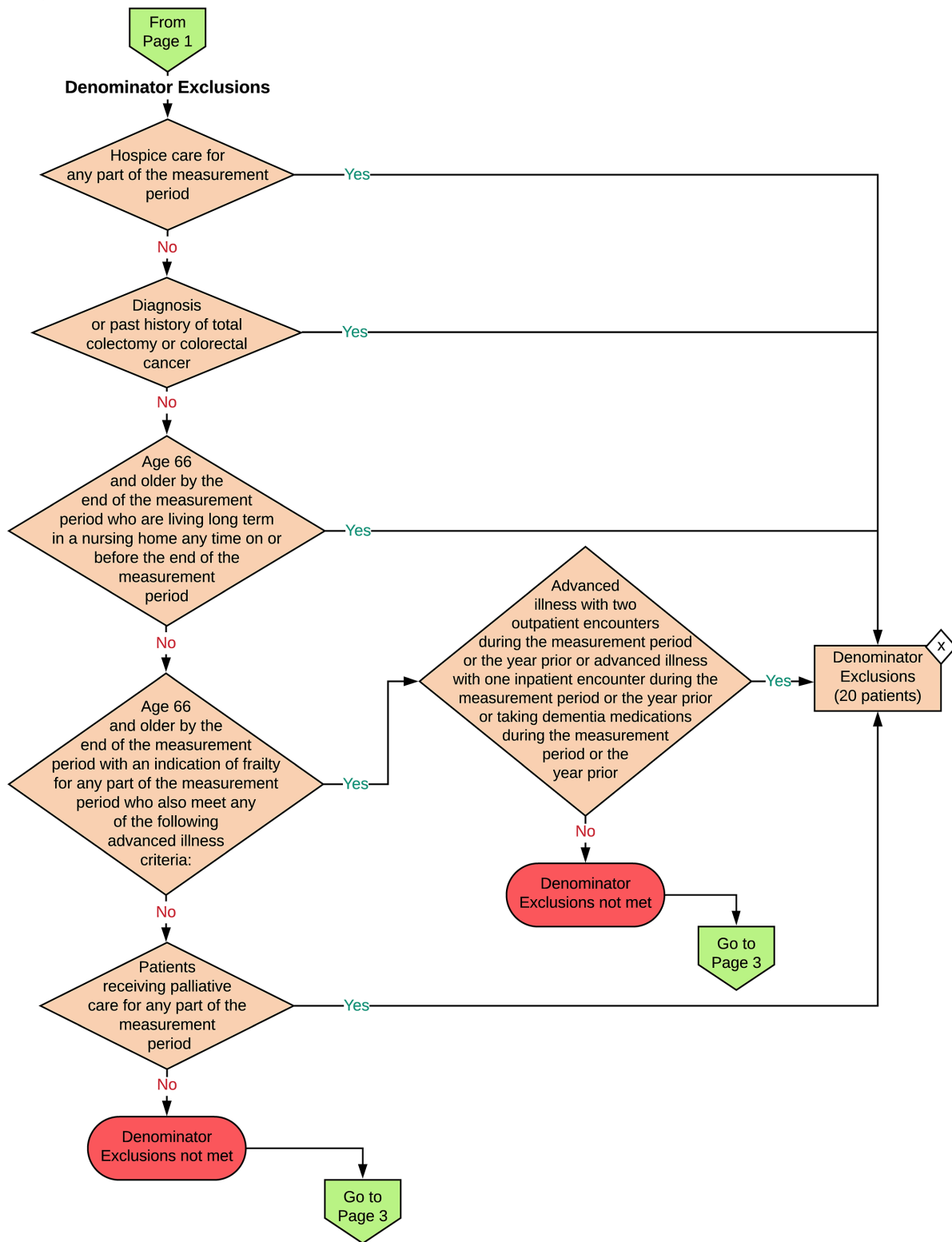
Percentage of adults 45-75 years of age who had appropriate screening for colorectal cancer

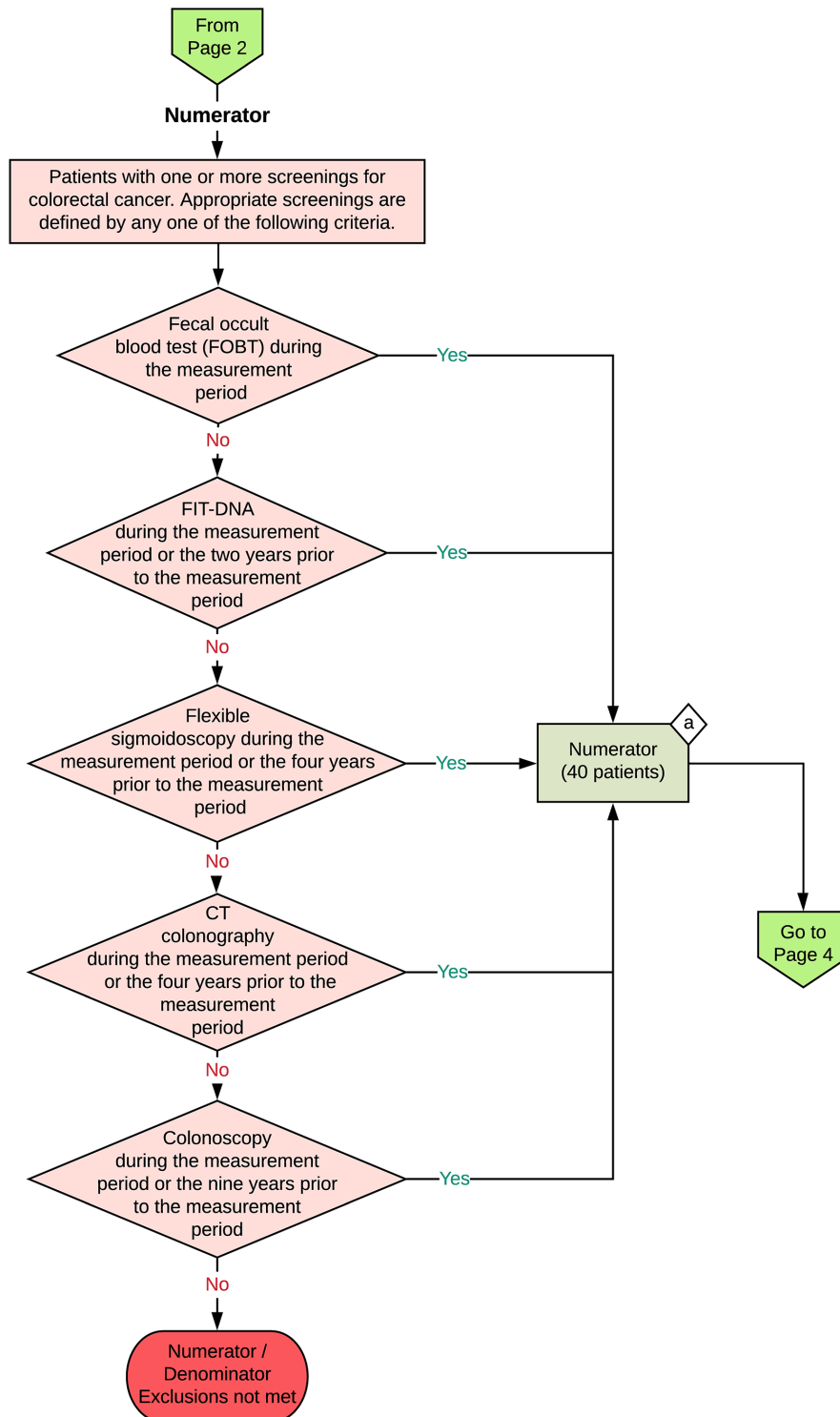
This eCQM is a patient-based measure

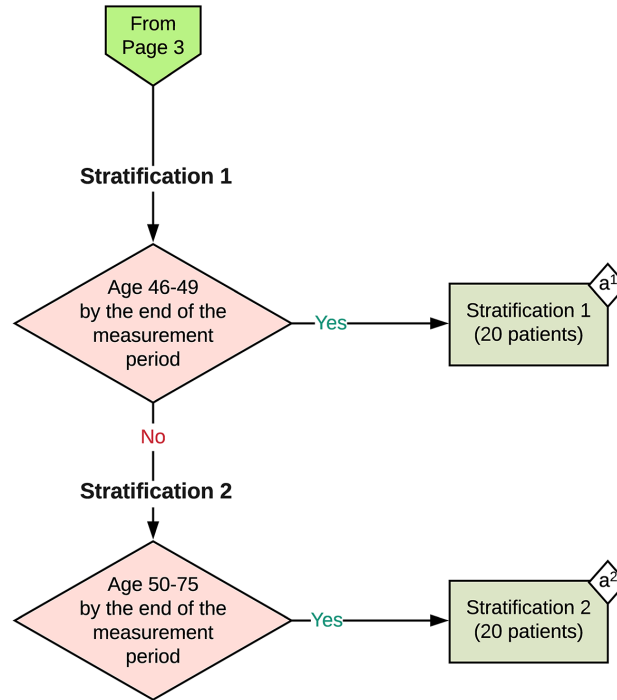


2023 eCQM Flow
eCQM Identifier: CMS130v11

Colorectal Cancer Screening







Sample Calculation

Performance Rate =

$$\frac{\text{Numerator (a = 40 patients)}}{\text{Denominator (b = 100 patients) - Denominator Exclusions (x = 20 patients)}} = \frac{40}{80} = 50\%$$

Stratification 1 of Performance Rate =

$$\frac{\text{Numerator (a¹ = 20 patients)}}{\text{Denominator (b = 100 patients) - Denominator Exclusions (x = 20 patients)}} = \frac{20}{80} = 25\%$$

Stratification 2 of Performance Rate =

$$\frac{\text{Numerator (a² = 20 patients)}}{\text{Denominator (b = 100 patients) - Denominator Exclusions (x = 20 patients)}} = \frac{20}{80} = 25\%$$

eCQM Identifier: CMS130v11
eCQM Title: Colorectal Cancer Screening

NOTE: This flow diagram represents an overview of population criteria requirements. Refer to the eCQM specification for a complete list of data elements included in this measure and required for submission.

Description: Percentage of adults 45 to 75 years of age who had appropriate screening for colorectal cancer.

This eCQM is a patient-based measure.

eCQM Flow Narrative

Initial Population

Start by identifying the Initial Population, which includes patients 46 to 75 years of age by the end of the measurement period with an eligible encounter during the measurement period.

Denominator

The Denominator equals the Initial Population. In the sample calculation provided at the end of the eCQM flow, the Denominator is equal to 100 patients.

Denominator Exclusions

The Denominator Exclusions criteria identify a subset of the Denominator population by excluding patients who are in hospice care for any part of the measurement period, patients with a diagnosis or past history of total colectomy or colorectal cancer, patients 66 and older by the end of the measurement period who are living long term in a nursing home any time on or before the end of the measurement period, patients age 66 and older by the end of the measurement period with frailty for any part of the measurement period and advanced illness with two outpatient encounters during the measurement period or the year prior, patients age 66 and older by the end of the measurement period with frailty for any part of the measurement period and advanced illness with one inpatient encounter during the measurement period or the year prior, patients age 66 and older by the end of the measurement period with frailty for any part of the measurement period and taking dementia medications during the measurement period or the year prior, and patients who are in palliative care for any part of the measurement period. In the sample calculation provided at the end of the eCQM flow, the Denominator Exclusions are equal to 20 patients.

Numerator

The Numerator criteria identify a subset of the Denominator population (that did not meet the Denominator Exclusions criteria) by including patients with one or more screenings for colorectal cancer. Appropriate screenings are defined by any one of the following criteria: fecal occult blood test (FOBT) during the measurement period, FIT-DNA during the measurement period or the two years prior to the measurement period, flexible sigmoidoscopy during the measurement period or the four years prior to the measurement period, CT colonography during the measurement period or the four years prior to the measurement period, or colonoscopy during the measurement period or the nine years prior to the measurement period. In the sample calculation provided at the end of the eCQM flow, the Numerator is equal to 40 patients.

Stratification 1

There are two strata for reporting separately by age group. Stratification 1 includes patients 46 to 49 years of age by the end of the measurement period. In the sample calculation provided at the end of the eCQM flow, Stratification 1 is equal to 20 patients.

Stratification 2

There are two strata for reporting separately by age group. Stratification 2 includes patients 50 to 75 years of age by the end of the measurement period. In the sample calculation provided at the end of the eCQM flow, Stratification 2 is equal to 20 patients.

Sample Calculation

A sample calculation is provided to help determine how the measure performance rate is derived. The measure performance rate is calculated by dividing the Numerator (total equals 40 patients) by the difference between the Denominator (total equals 100 patients) and the Denominator Exclusions (total equals 20 patients), which is equal to a score of 50 percent. Stratification 1 of the performance rate is calculated by dividing the Numerator of Stratification 1 (total equals 20 patients) by the difference between the Denominator (total equals 100 patients) and the Denominator Exclusions (total equals 20 patients), which is equal to a score of 25 percent. Stratification 2 of the performance rate is calculated by dividing the Numerator of Stratification 2 (total equals 20 patients) by the difference between the Denominator (total equals 100 patients) and the Denominator Exclusions (total equals 20 patients), which is equal to a score of 25 percent.