

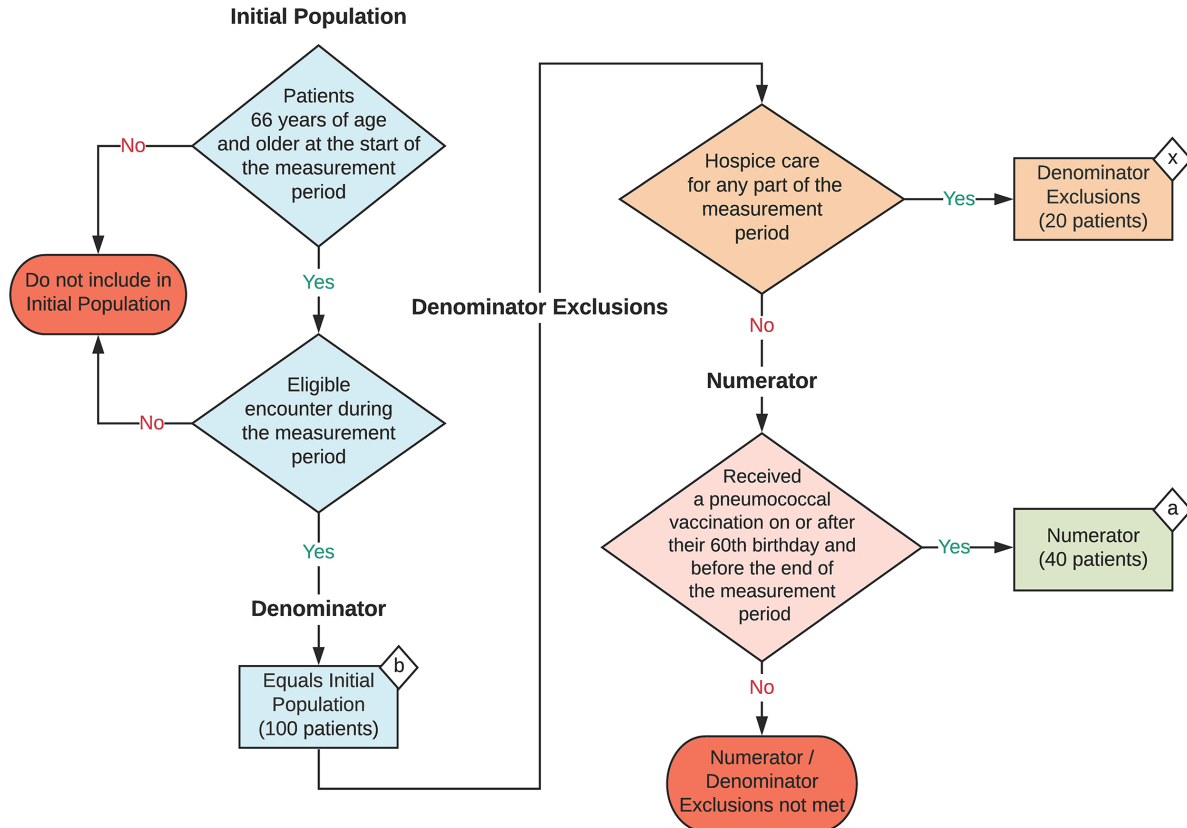
**2023 eCQM Flow**  
**eCQM Identifier: CMS127v11**

**NOTE:** This flow diagram represents an overview of population criteria requirements. Refer to the eCQM specification for a complete list of data elements included in this measure and required for submission.

**Pneumococcal Vaccination Status for Older Adults**

Percentage of patients 66 years of age and older who have received a pneumococcal vaccine

This eCQM is a patient-based measure



**Sample Calculation**

**Performance Rate =**

$$\frac{\text{Numerator (a = 40 patients)}}{\text{Denominator (b = 100 patients) - Denominator Exclusions (x = 20 patients)}} = \frac{40}{80} = 50\%$$

**eCQM Identifier: CMS127v11**  
**eCQM Title: Pneumococcal Vaccination Status for Older Adults**

**NOTE:** This flow diagram represents an overview of population criteria requirements. Refer to the eCQM specification for a complete list of data elements included in this measure and required for submission.

**Description:** Percentage of patients 66 years of age and older who have received a pneumococcal vaccine.

**This eCQM is a patient-based measure.**

**eCQM Flow Narrative**

**Initial Population**

Start by identifying the Initial Population, which includes patients 66 years of age and older at the start of the measurement period with an eligible encounter during the measurement period.

**Denominator**

The Denominator equals the Initial Population. In the sample calculation provided at the end of the eCQM flow, the Denominator is equal to 100 patients.

**Denominator Exclusions**

The Denominator Exclusions criteria identify a subset of the Denominator population by excluding patients whose hospice care overlaps the measurement period. In the sample calculation provided at the end of the eCQM flow, the Denominator Exclusions are equal to 20 patients.

**Numerator**

The Numerator criteria identify a subset of the Denominator population (that did not meet the Denominator Exclusions criteria) by including patients who received a pneumococcal vaccination on or after their 60<sup>th</sup> birthday and before the end of the measurement period. In the sample calculation provided at the end of the eCQM flow, the Numerator is equal to 40 patients.

**Sample Calculation**

A sample calculation is provided to help determine how the measure performance rate is derived. The measure performance rate is calculated by dividing the Numerator (total equals 40 patients) by the difference between the Denominator (total equals 100 patients) and Denominator Exclusions (total equals 20 patients) which is equal to a score of 50 percent.