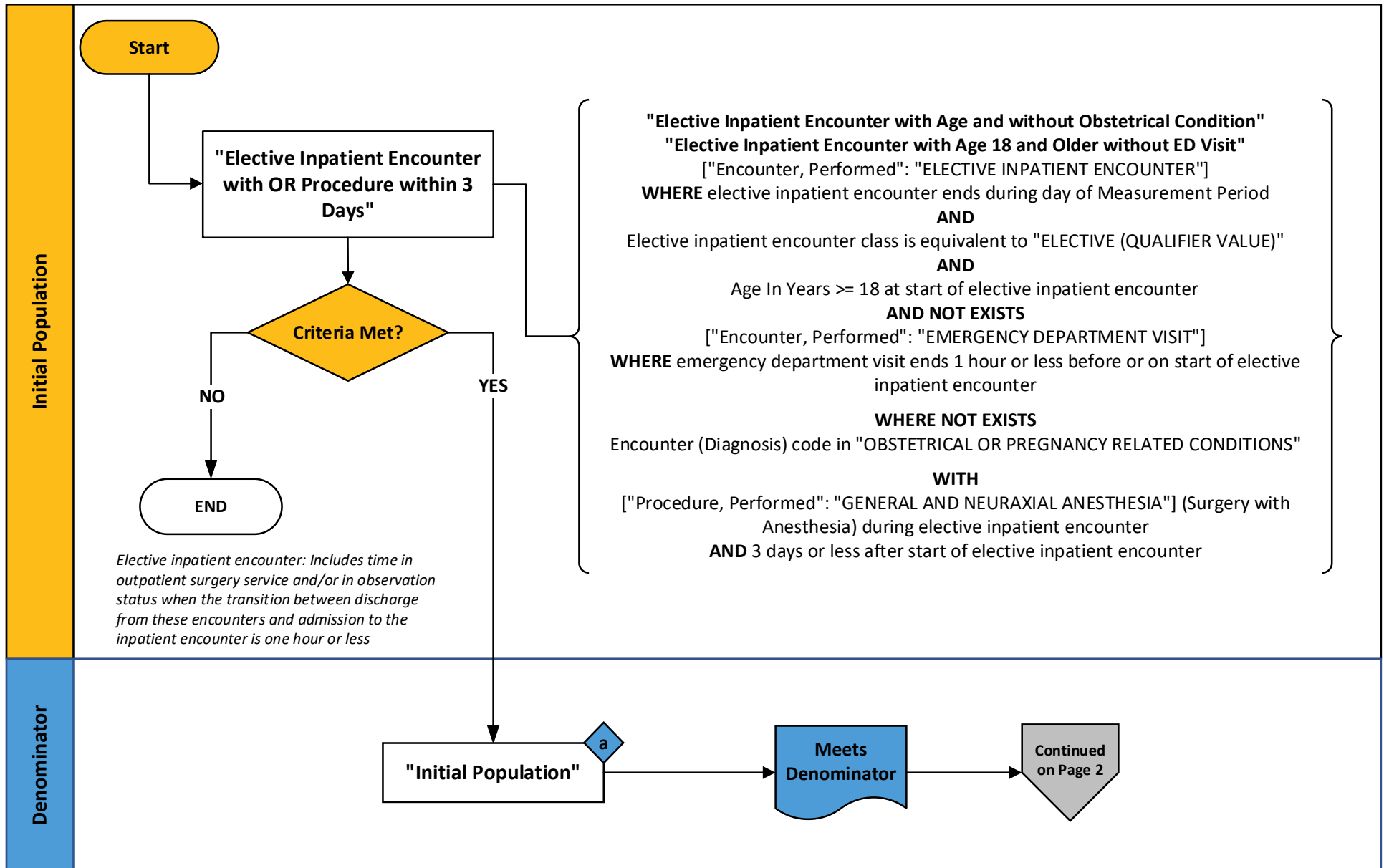


2026 eCQM Flow – CMS1218v2: Hospital Harm – Postoperative Respiratory Failure (HH-RF)* CBE# 4130e

*This flow diagram represents an overview of population criteria requirements. Please refer to the eCQM measure specification for a complete list of definitions, direct reference codes, data or timing elements included in this measure and required for submission.

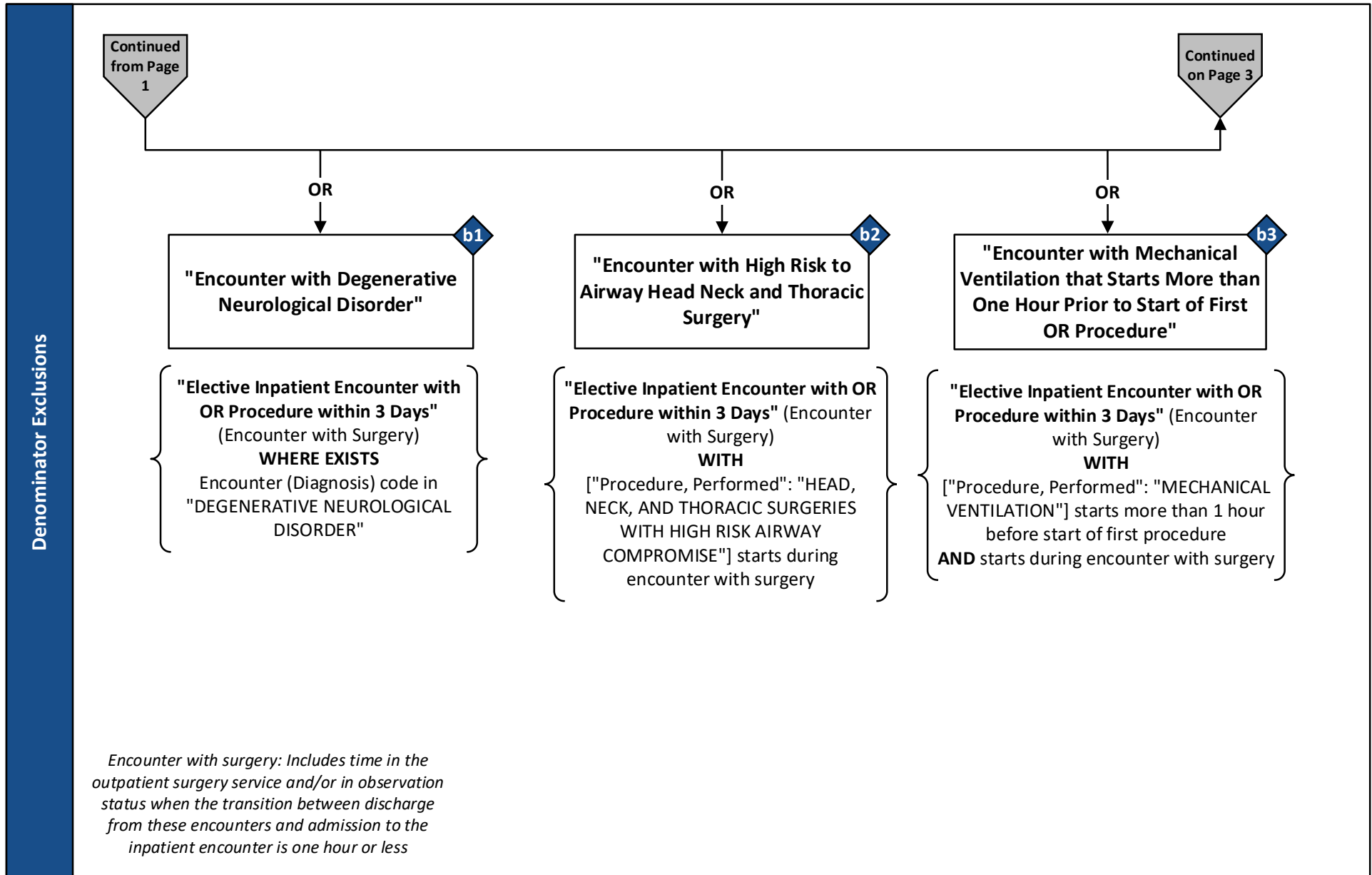
Measure Flow Diagram



2026 eCQM Flow – CMS1218v2: Hospital Harm – Postoperative Respiratory Failure (HH-RF)* CBE# 4130e

**This flow diagram represents an overview of population criteria requirements. Please refer to the eCQM measure specification for a complete list of definitions, direct reference codes, data or timing elements included in this measure and required for submission.*

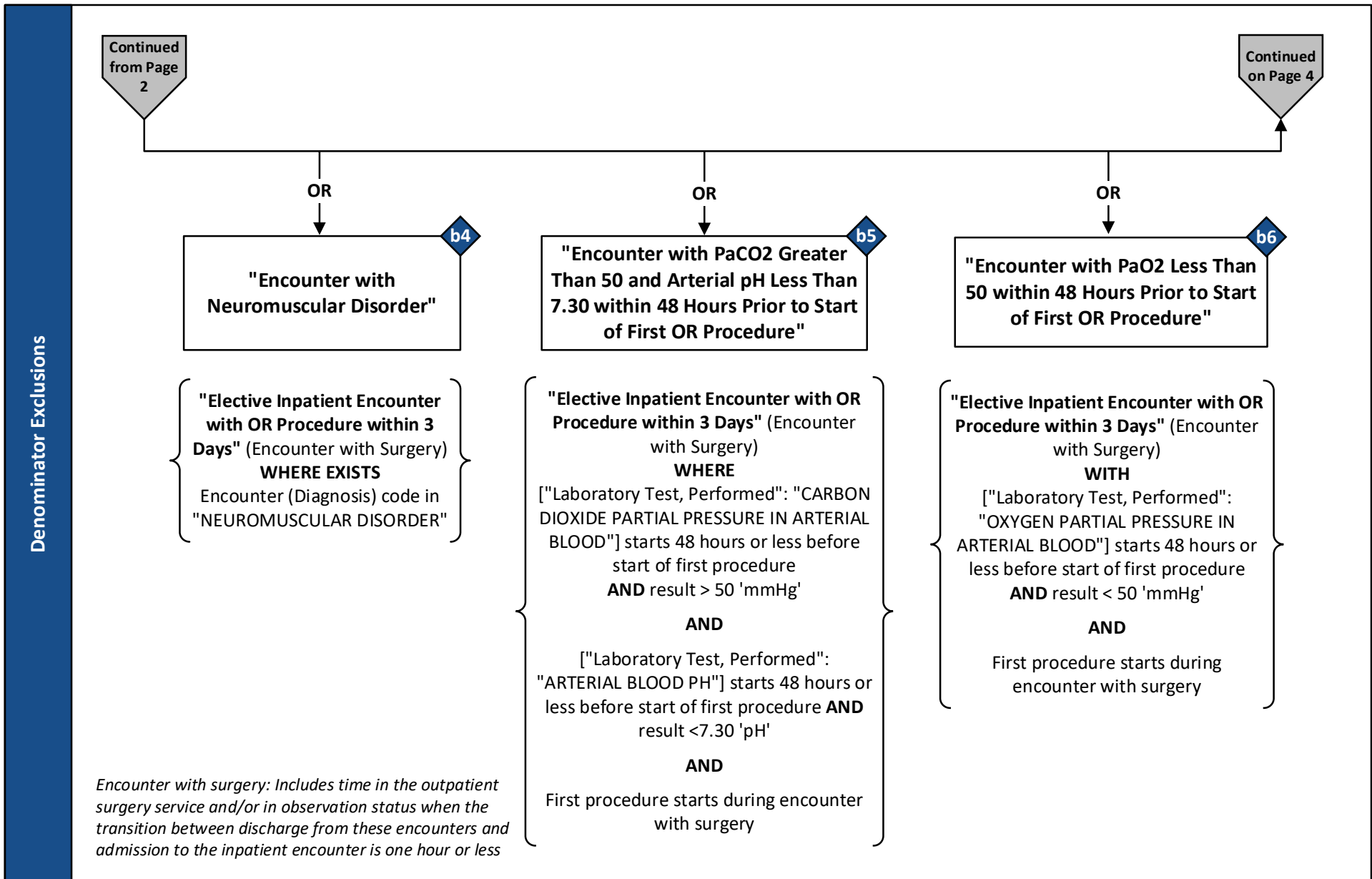
Measure Flow Diagram (Continued)



2026 eCQM Flow – CMS1218v2: Hospital Harm – Postoperative Respiratory Failure (HH-RF)* CBE# 4130e

*This flow diagram represents an overview of population criteria requirements. Please refer to the eCQM measure specification for a complete list of definitions, direct reference codes, data or timing elements included in this measure and required for submission.

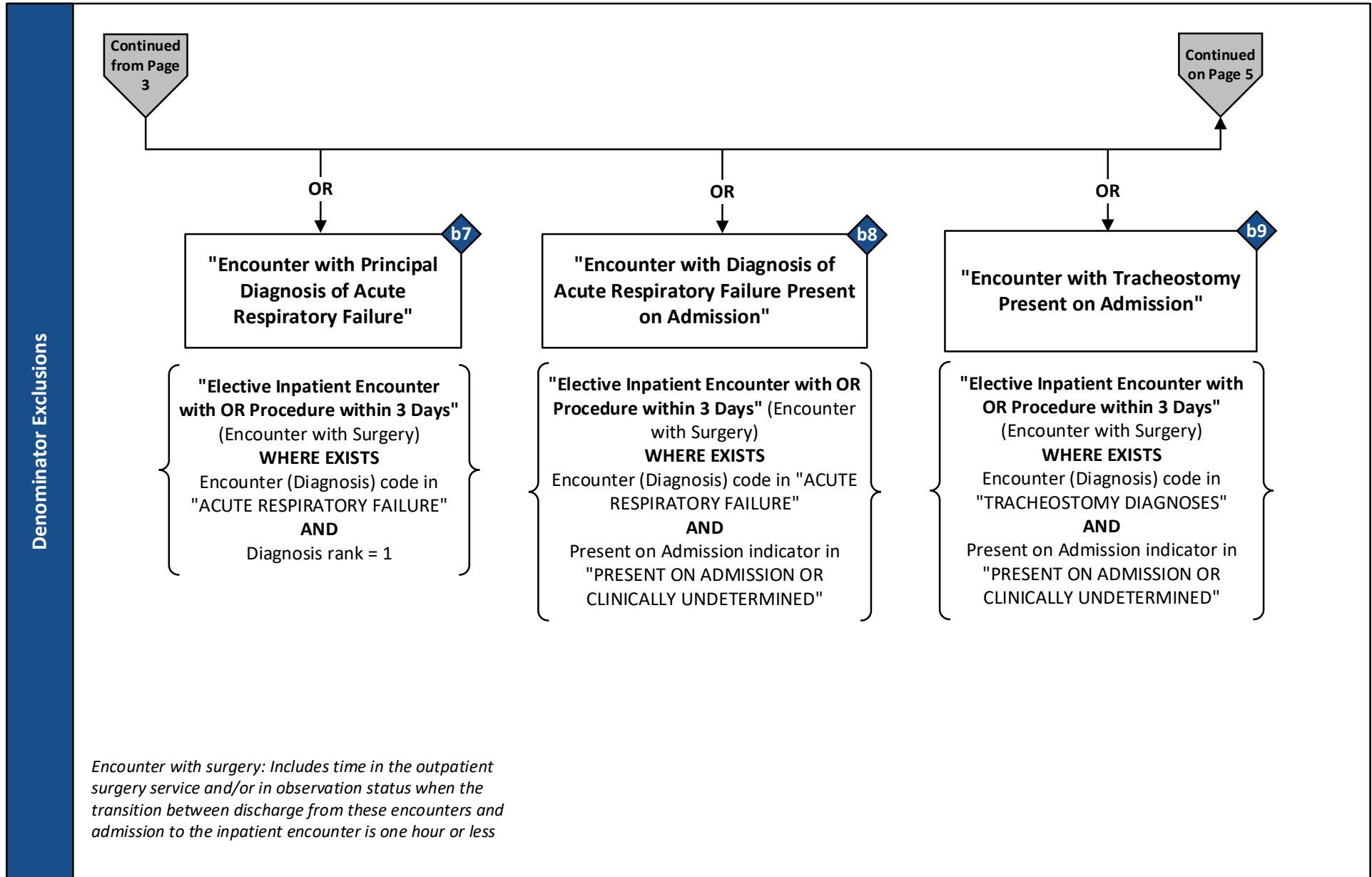
Measure Flow Diagram (Continued)



2026 eCQM Flow – CMS1218v2: Hospital Harm – Postoperative Respiratory Failure (HH-RF)* CBE# 4130e

*This flow diagram represents an overview of population criteria requirements. Please refer to the eCQM measure specification for a complete list of definitions, direct reference codes, data or timing elements included in this measure and required for submission.

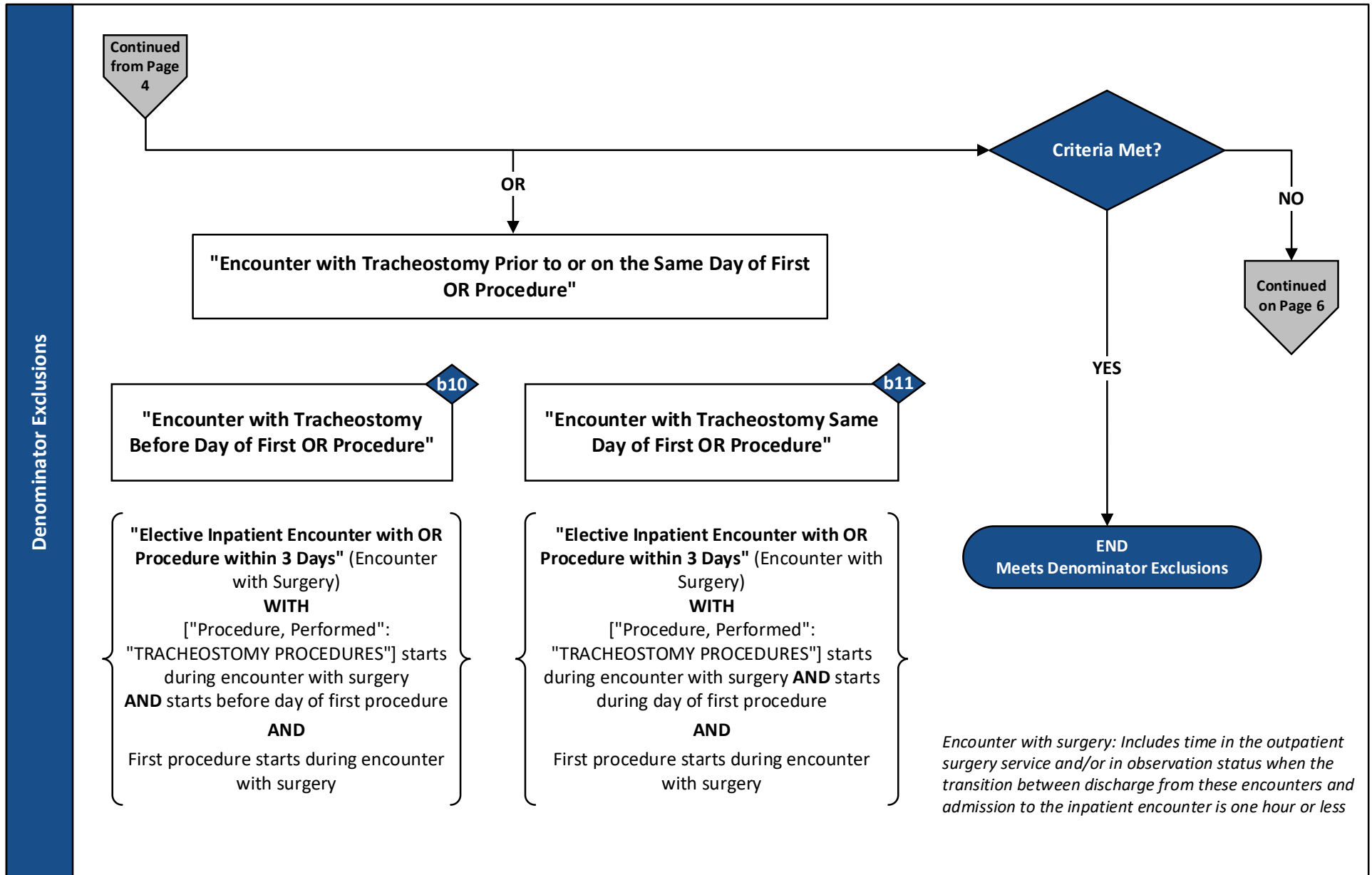
Measure Flow Diagram (Continued)



2026 eCQM Flow – CMS1218v2: Hospital Harm – Postoperative Respiratory Failure (HH-RF)* CBE# 4130e

*This flow diagram represents an overview of population criteria requirements. Please refer to the eCQM measure specification for a complete list of definitions, direct reference codes, data or timing elements included in this measure and required for submission.

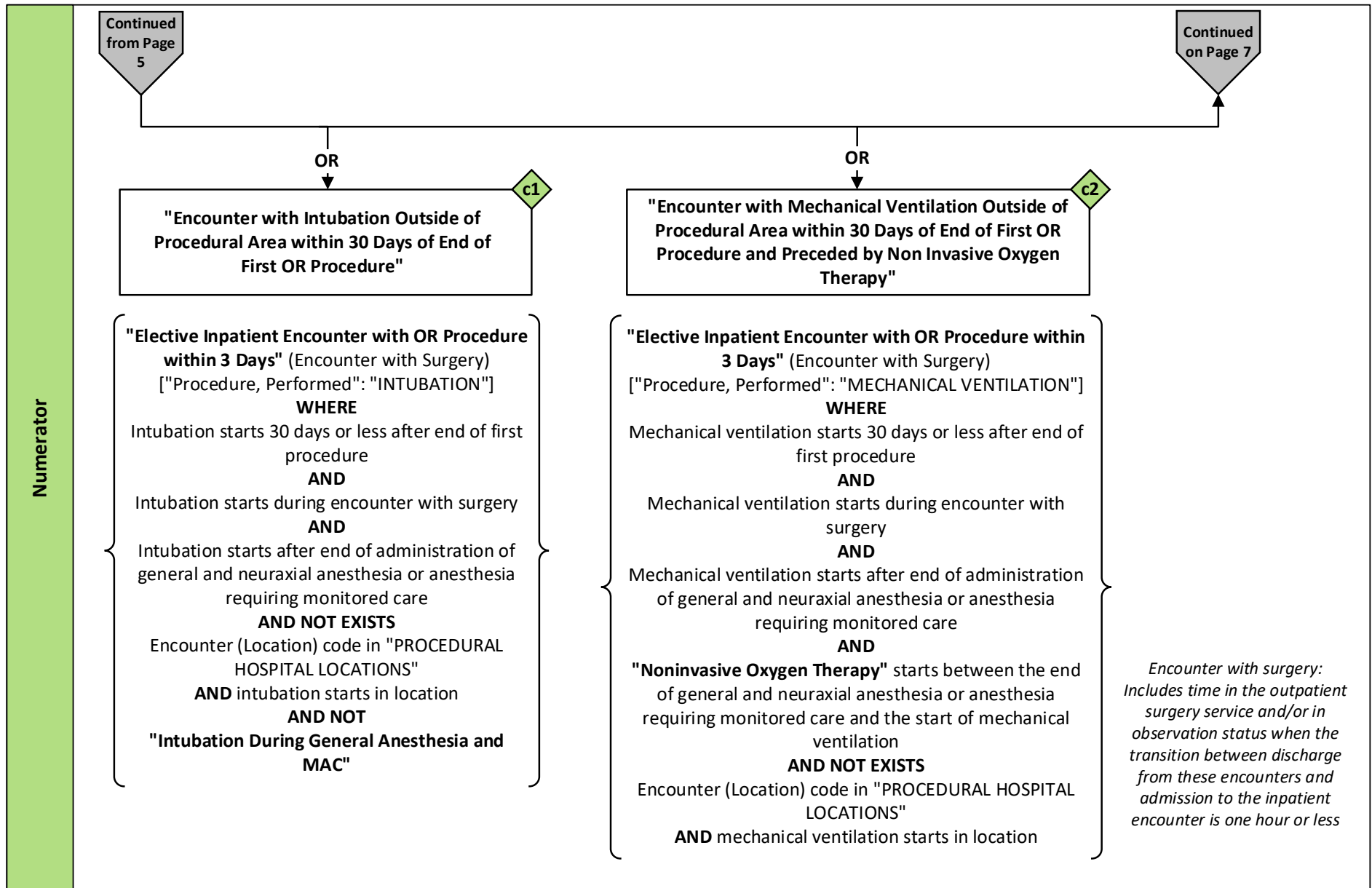
Measure Flow Diagram (Continued)



2026 eCQM Flow – CMS1218v2: Hospital Harm – Postoperative Respiratory Failure (HH-RF)* CBE# 4130e

*This flow diagram represents an overview of population criteria requirements. Please refer to the eCQM measure specification for a complete list of definitions, direct reference codes, data or timing elements included in this measure and required for submission.

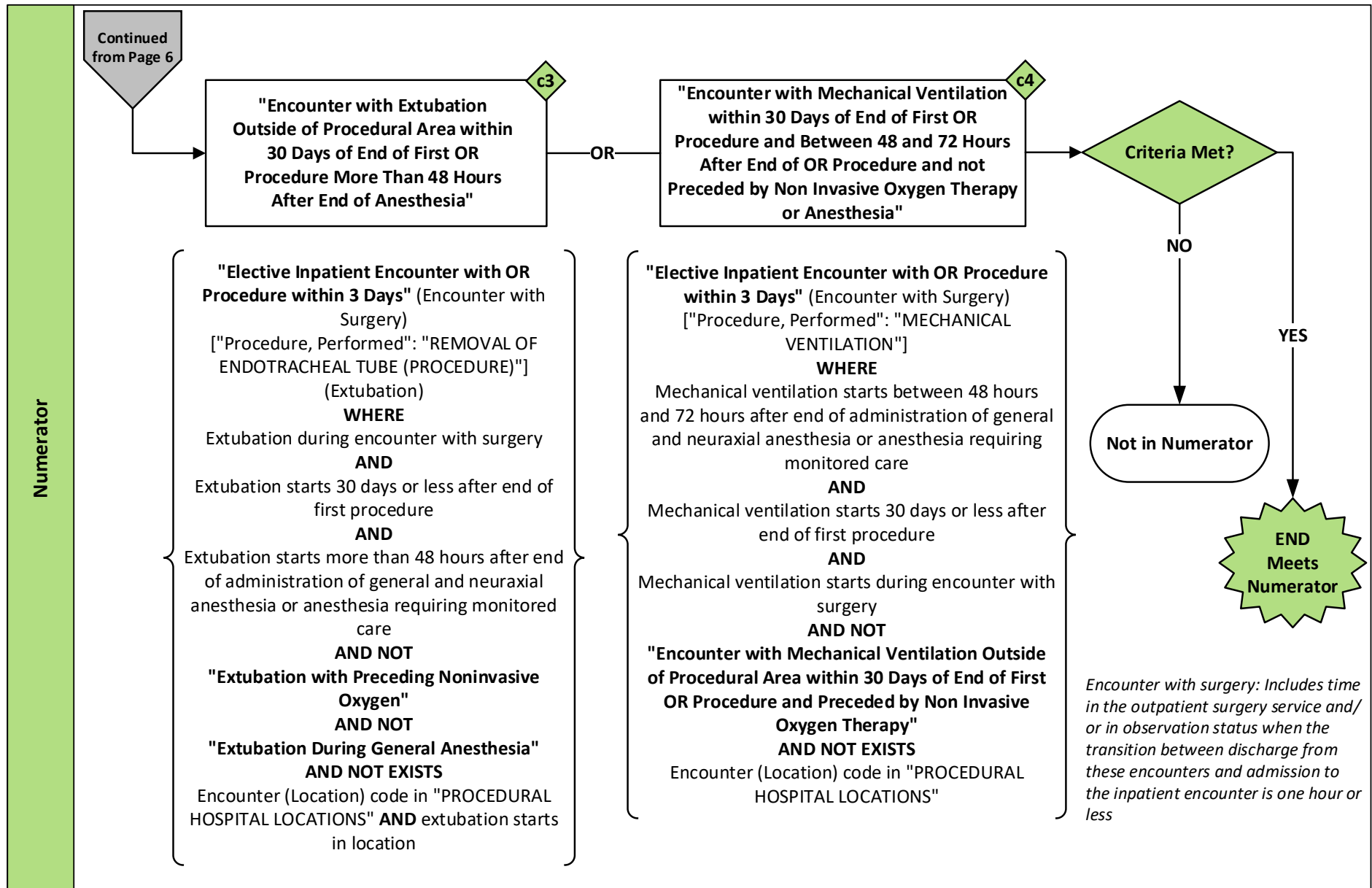
Measure Flow Diagram (Continued)



2026 eCQM Flow – CMS1218v2: Hospital Harm – Postoperative Respiratory Failure (HH-RF)* CBE# 4130e

*This flow diagram represents an overview of population criteria requirements. Please refer to the eCQM measure specification for a complete list of definitions, direct reference codes, data or timing elements included in this measure and required for submission.

Measure Flow Diagram (Continued)



2026 eCQM Flow – **CMS1218v2: Hospital Harm – Postoperative Respiratory Failure (HH-RF)*** CBE# 4130e

**This flow diagram represents an overview of population criteria requirements. Please refer to the eCQM measure specification for a complete list of definitions, direct reference codes, data or timing elements included in this measure and required for submission.*

Measure Flow Diagram (Continued)

Sample Calculation		
Performance Rate =	<div>Numerator (c1 + c2 + c3 + c4 = 40)</div> <div>Denominator (a = 100) – Denominator Exclusions (b1 +b2 + b3 + b4 + b5 + b6 + b7 + b8 + b9 + b10 + b11 = 20)</div>	= 50%

2026 eCQM Flow – CMS1218v2: Hospital Harm – Postoperative Respiratory Failure (HH-RF)* CBE# 4130e

**This flow diagram represents an overview of population criteria requirements. Please refer to the eCQM measure specification for a complete list of definitions, direct reference codes, data or timing elements included in this measure and required for submission.*

Measure Flow Narrative

The measure flow diagram on the preceding pages illustrates the steps to determine the population criteria for this measure.

Measure Description	This measure assesses the number of elective inpatient hospitalizations for patients aged 18 years and older without an obstetrical condition who have a procedure resulting in postoperative respiratory failure (PRF)
Initial Population	Start by identifying the initial population criteria as elective inpatient hospitalizations with no preceding emergency department visit that end during the measurement period for patients aged 18 and older without an obstetrical condition and at least one surgical procedure was performed within the first 3 days of the encounter
Denominator	The denominator equals the initial population
Denominator Exclusions	<p>The denominator exclusion criteria identify a subset of the denominator population by excluding inpatient hospitalizations for patients:</p> <ul style="list-style-type: none">• With a diagnosis for a degenerative neurological disorder• With any selected head, neck, and thoracic surgery involving significant risk of airway compromise or requiring airway protection• Who have mechanical ventilation that starts more than one hour prior to the start of the first operating room (OR) procedure• With a diagnosis for a neuromuscular disorder• With arterial partial pressure of carbon dioxide (PaCO₂)>50 mmHg combined with an arterial pH<7.30 within 48 hours or less prior to the start of the first OR procedure• With arterial partial pressure of oxygen (PaO₂)<50 mmHg within 48 hours or less prior to the start of the first OR procedure• With a principal diagnosis for acute respiratory failure• With a diagnosis for acute respiratory failure present on admission• With any diagnosis present on admission for the existence of a tracheostomy• Where a tracheostomy is performed before or on the same day as the first OR procedure

Measure Flow Narrative (Continued)

The measure flow diagram on the preceding pages illustrates the steps to determine the population criteria for this measure.

Numerator	<p>The numerator criteria identify a subset of the denominator population by including elective inpatient hospitalizations for patients with postoperative respiratory failure as evidenced by any of the following:</p> <p>Criterion A: Mechanical ventilation (MV) initiated within 30 days after first OR procedure, as evidenced by:</p> <p>A.1. Intubation that occurs outside of a procedural area and within 30 days after the end of the first OR procedure of the encounter.</p> <p>or</p> <p>A.2. MV that occurs outside of a procedural area within 30 days after the end of the first OR procedure of the encounter and is preceded by a period of non-invasive oxygen therapy between the end of the OR procedure and the MV occurrence, and without a subsequent OR procedure between the non-invasive oxygen therapy and the MV occurrence.</p> <p>or</p> <p>Criterion B: MV with a duration of more than 48 hours after the first OR procedure, as evidenced by:</p> <p>B.1. Extubation that occurs outside of a procedural area more than 48 hours after the end of an OR procedure and within 30 days after the end of the first OR procedure, and is not preceded by a period of non-invasive oxygen therapy or a subsequent OR procedure between the end of the OR procedure and the extubation occurrence.</p> <p>or</p> <p>B.2 Mechanical ventilation that occurs between 48 and 72 hours after the end of an OR procedure and within 30 days after the end of the first OR procedure, and is not preceded by a non-invasive oxygen therapy or a subsequent OR procedure between the end of the OR procedure and the MV occurrence.</p>
-----------	---

2026 eCQM Flow – CMS1218v2: Hospital Harm – Postoperative Respiratory Failure (HH-RF)* CBE# 4130e

**This flow diagram represents an overview of population criteria requirements. Please refer to the eCQM measure specification for a complete list of definitions, direct reference codes, data or timing elements included in this measure and required for submission.*

Measure Flow Narrative (Continued)

The measure flow diagram on the preceding pages illustrates the steps to determine the population criteria for this measure.

Risk Adjustment	<p>Variables are collected for the development of baseline risk adjustment model</p> <p>Report the first resulted vital sign values during the encounter in the Unified Code for Units of Measure (UCUM) units specified:</p> <ul style="list-style-type: none">• Body temperature: Cel, [degF]• Heart rate: {Beats}/min• Respiratory rate: {Breaths}/min• Systolic blood pressure: mm[Hg] <p>Report the first resulted laboratory test values during the encounter in UCUM units specified:</p> <ul style="list-style-type: none">• Albumin: g/dL, umol/L• Aspartate aminotransferase (AST/SGOT): U/L, IU/L• Bicarbonate: mmol/L• Bilirubin: mg/dL, umol/L• Blood urea nitrogen (BUN): mg/dL, umol/L• Carbon dioxide (partial pressure): mm[Hg]• Creatinine: mg/dL, umol/L• Hematocrit: %• Hemoglobin: g/dL, mmol/L• Leukocyte count: {cells}/uL, 10*3/uL, 10*9/L, /mm3• Oxygen (partial pressure): mm[Hg]• pH of arterial blood: [pH]• Platelet count: 10*3/uL, 10*9/L, /mm3• Sodium: meq/L, mmol/L• White blood cell count: {cells}/uL, 10*3/uL, 10*9/L, /mm3 <p>Additional variables used for risk adjustment:</p> <ul style="list-style-type: none">• American Society of Anesthesiologists (ASA) physical status class assessment that starts during the encounter• First Body mass index (BMI), reported using UCUM unit: kg/m2• Encounter diagnoses with their present on admission (POA) indicators• Most recent smoking status• Principal surgical procedures that start during the encounter <p>Please see the Hospital Harm - Postoperative Respiratory Failure Risk Adjustment Methodology Report on the eCQM-specific page on the eCQI Resource Center website: https://ecqi.healthit.gov/.</p>
------------------------	---