

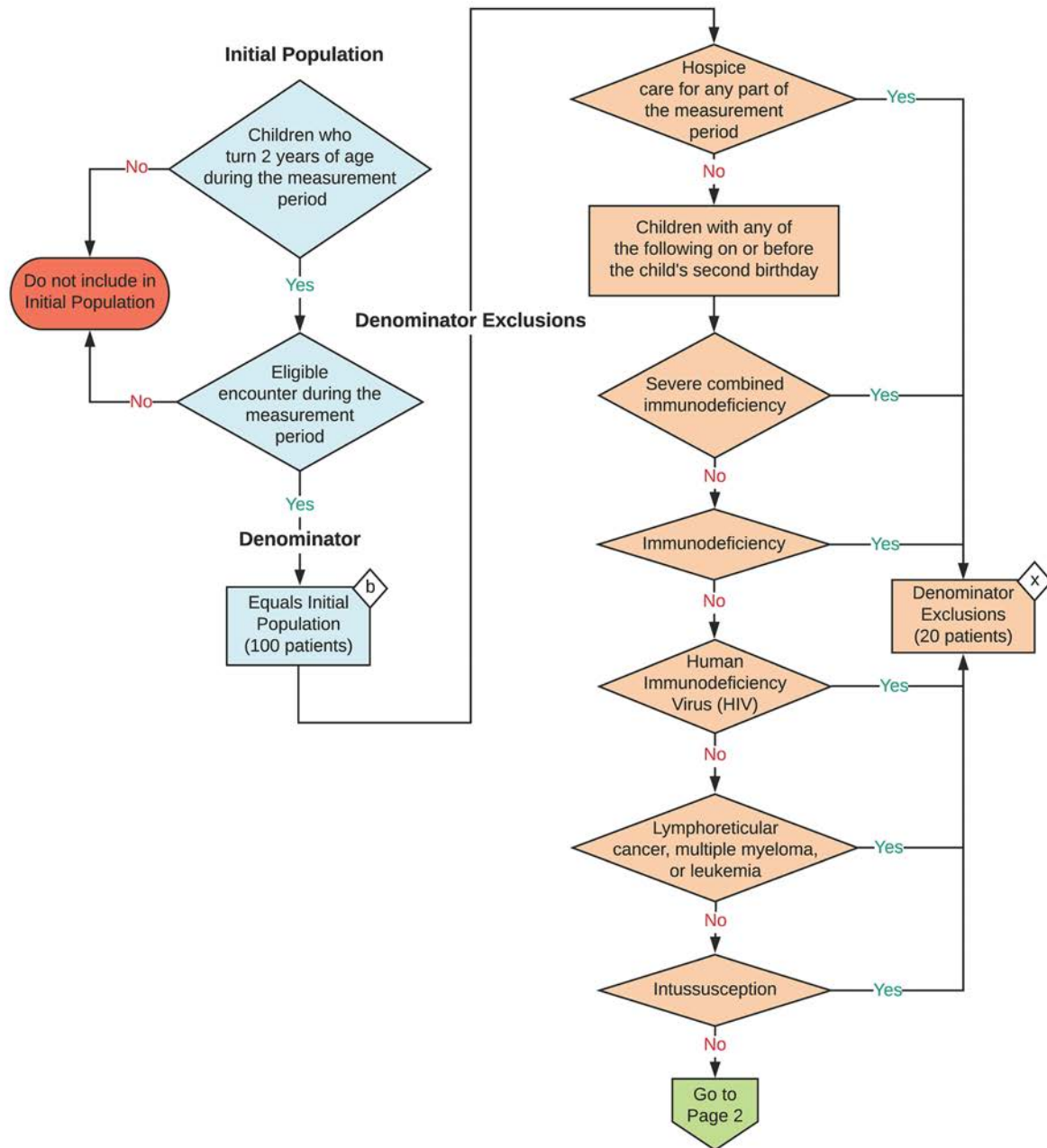
**2025 eCQM Flow**  
**eCQM Identifier: CMS117v13**

**NOTE:** This flow diagram represents an overview of population criteria requirements. Refer to the eCQM specification for a complete list of data elements included in this measure and required for submission.

**Childhood Immunization Status**

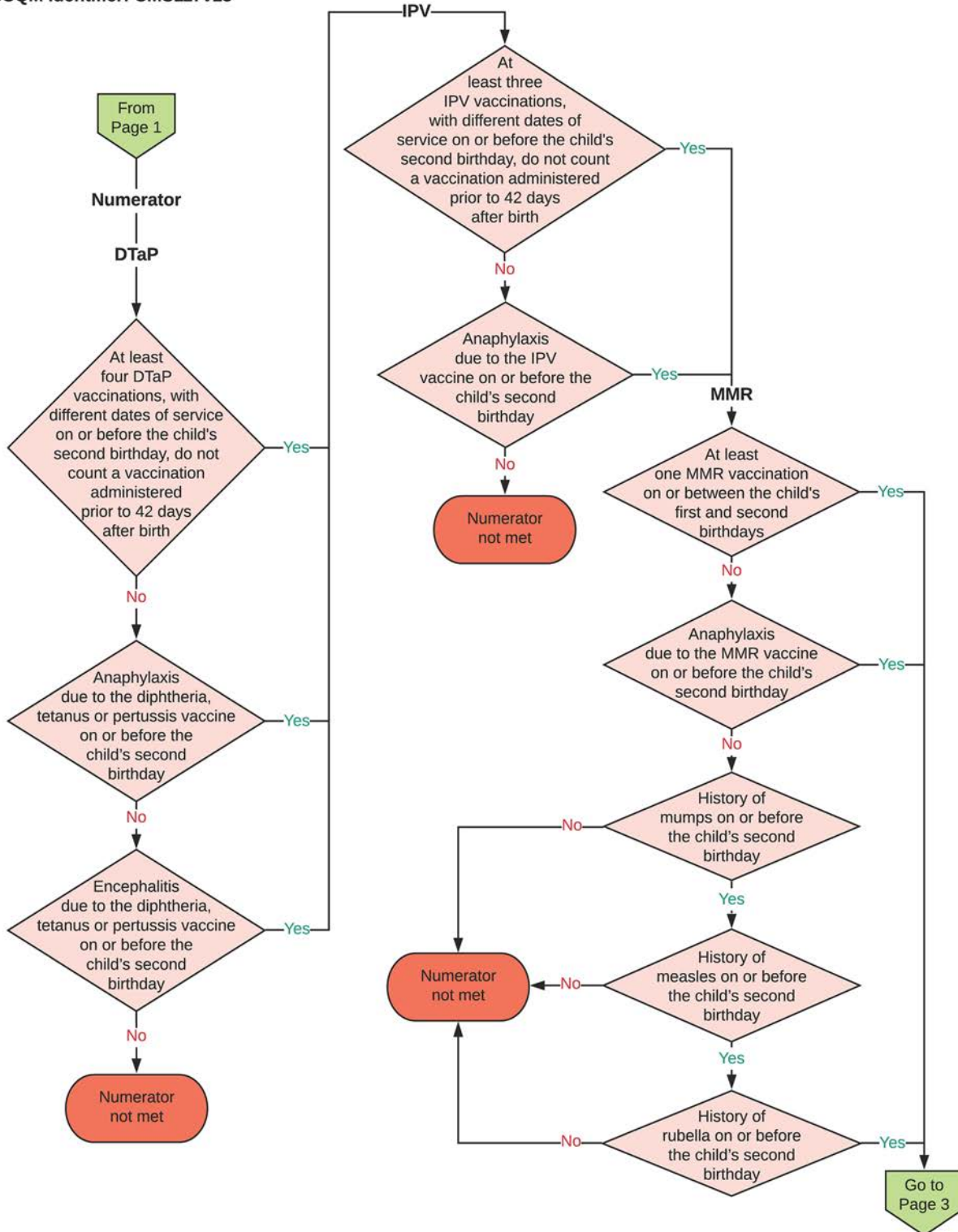
Percentage of children 2 years of age who had four diphtheria, tetanus and acellular pertussis (DTaP); three polio (IPV), one measles, mumps and rubella (MMR); three or four H influenza type B (HiB); three hepatitis B (HepB); one chicken pox (VZV); four pneumococcal conjugate (PCV); one hepatitis A (HepA); two or three rotavirus (RV); and two influenza (flu) vaccines by their second birthday

This eCQM is a patient-based measure



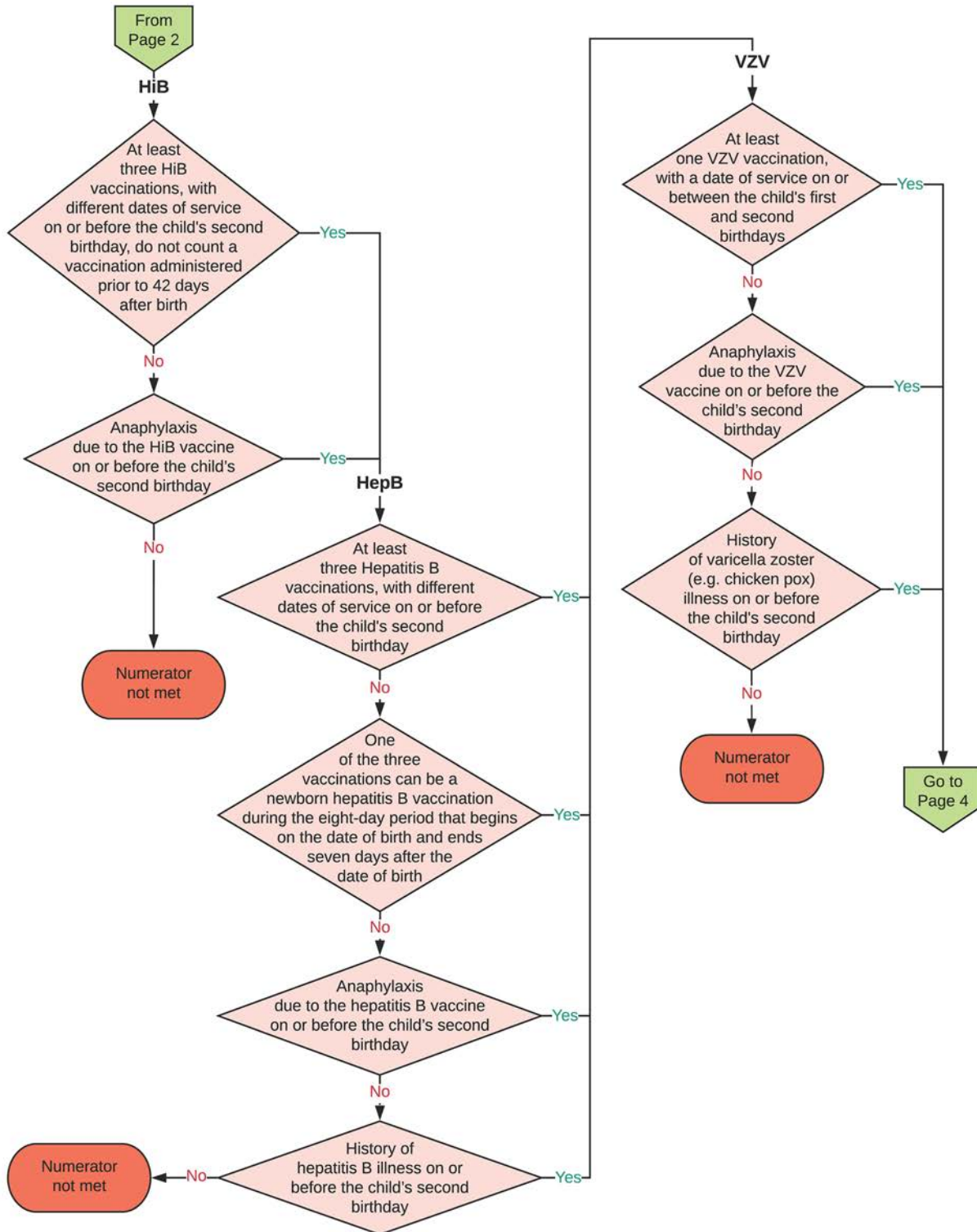
2025 eCQM Flow  
eCQM Identifier: CMS117v13

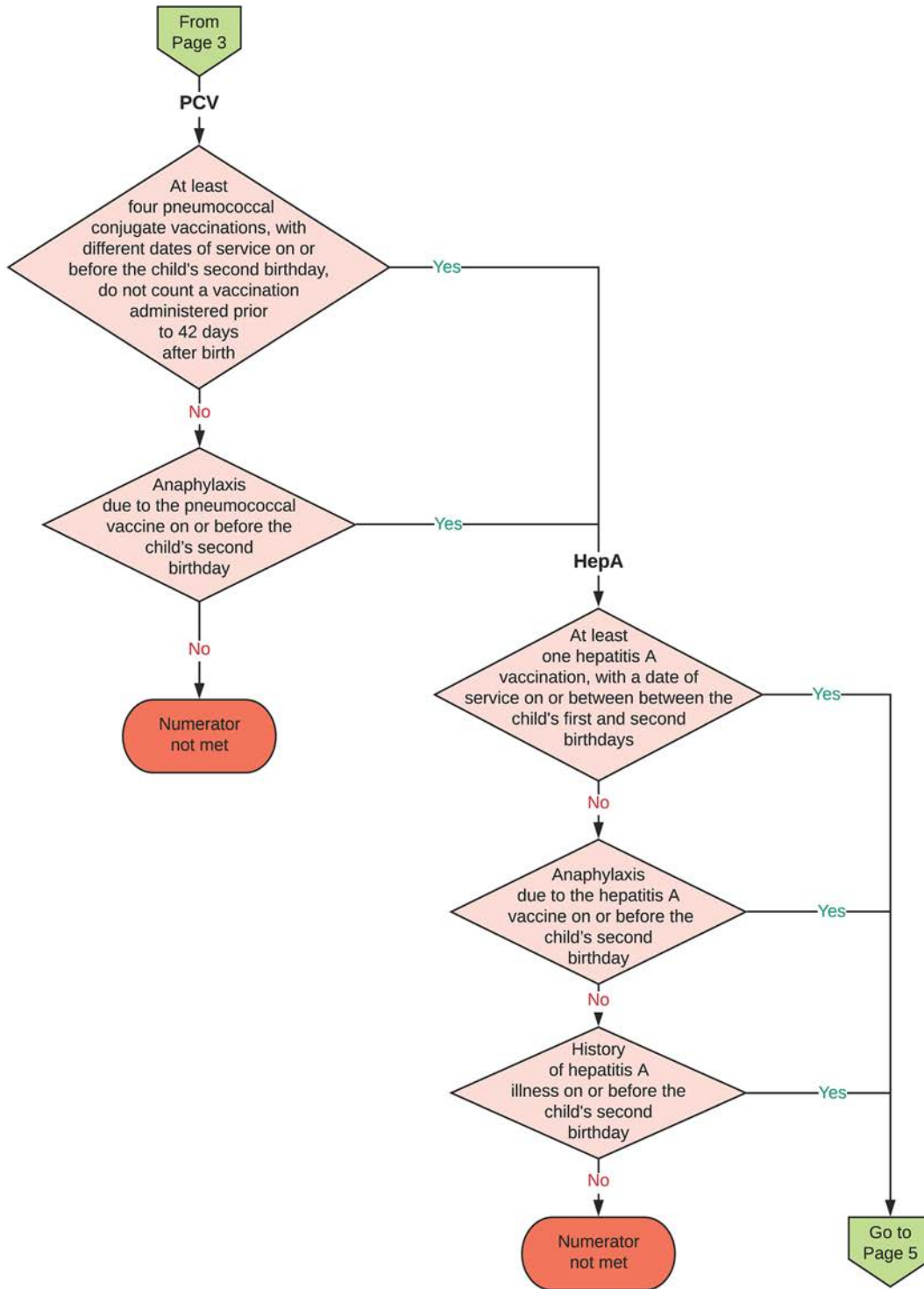
Childhood Immunization Status

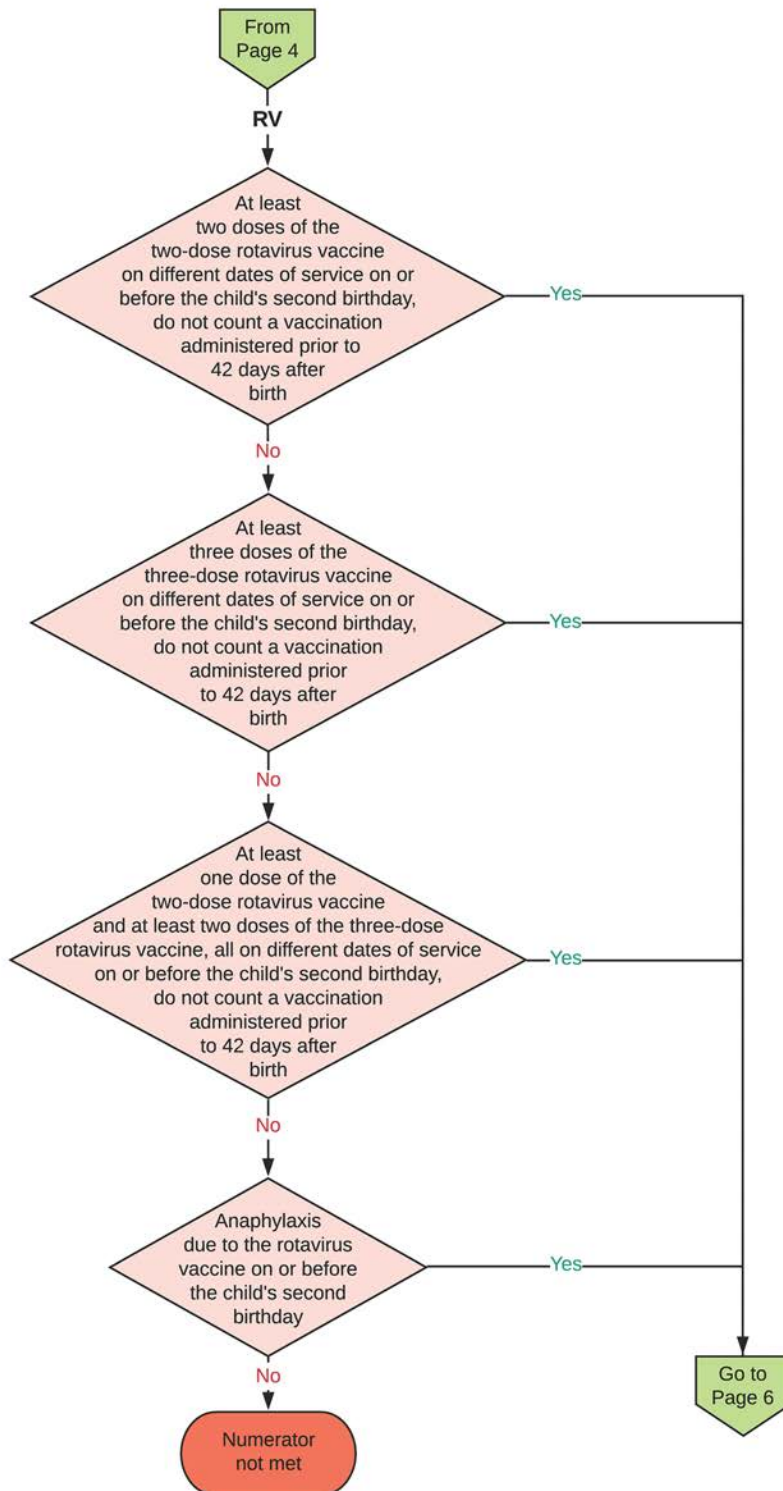


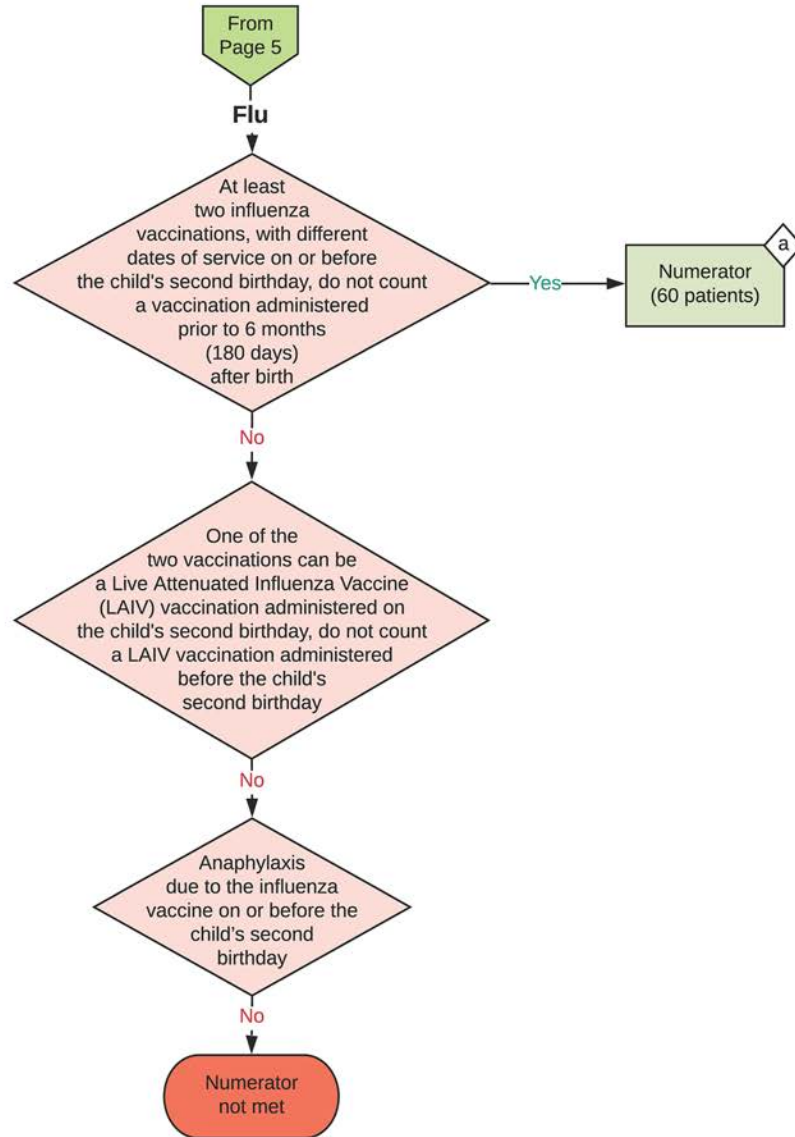
2025 eCQM Flow  
eCQM Identifier: CMS117v13

Childhood Immunization Status









**Sample Calculation**

**Performance Rate =**

Numerator (a = 60 patients)	=	$\frac{60}{80}$	=	75 %
Denominator (b = 100 patients) - Denominator Exclusions (x = 20 patients)				

**eCQM Identifier: CMS117v13**  
**eCQM Title: Childhood Immunization Status**

**NOTE:** This flow diagram represents an overview of population criteria requirements. Refer to the eCQM specification for a complete list of data elements included in this measure and required for submission.

**Description:** Percentage of children 2 years of age who had four diphtheria, tetanus and acellular pertussis (DTaP); three polio (IPV), one measles, mumps and rubella (MMR); three or four H influenza type B (HiB); three hepatitis B (HepB); one chicken pox (VZV); four pneumococcal conjugate (PCV); one hepatitis A (HepA); two or three rotavirus (RV); and two influenza (flu) vaccines by their second birthday.

**This eCQM is a patient-based measure.**

**eCQM Flow Narrative**

**Initial Population**

Start by identifying the Initial Population, which includes children who turn 2 years of age during the measurement period and who have an eligible encounter during the measurement period.

**Denominator**

The Denominator equals the Initial Population. In the sample calculation provided at the end of the eCQM flow, the Denominator is equal to 100 patients.

**Denominator Exclusions**

The Denominator Exclusions criteria identify a subset of the Denominator population by excluding children who are in hospice care for any part of the measurement period; children with severe combined immunodeficiency on or before the child's second birthday; children with immunodeficiency on or before the child's second birthday; children with Human Immunodeficiency Virus (HIV) on or before the child's second birthday; children with lymphoreticular cancer, multiple myeloma or leukemia on or before the child's second birthday; and children with intussusception on or before the child's second birthday. In the sample calculation provided at the end of the eCQM flow, the Denominator Exclusions are equal to 20 patients.

**Numerator**

The Numerator criteria identify a subset of the Denominator population (that did not meet the Denominator Exclusions criteria) by including children who have evidence showing they received recommended vaccines, had documented history of the illness, or had an allergic reaction to the vaccine by their second birthday. In the sample calculation provided at the end of the eCQM flow, the Numerator is equal to 60 patients.

**Sample Calculation**

A sample calculation is provided to help determine how the measure performance rate is derived. The measure performance rate is calculated by dividing the Numerator (total equals 60 patients) by the difference between the Denominator (total equals 100 patients) and the Denominator Exclusions (total equals 20 patients), which is equal to a score of 75 percent.