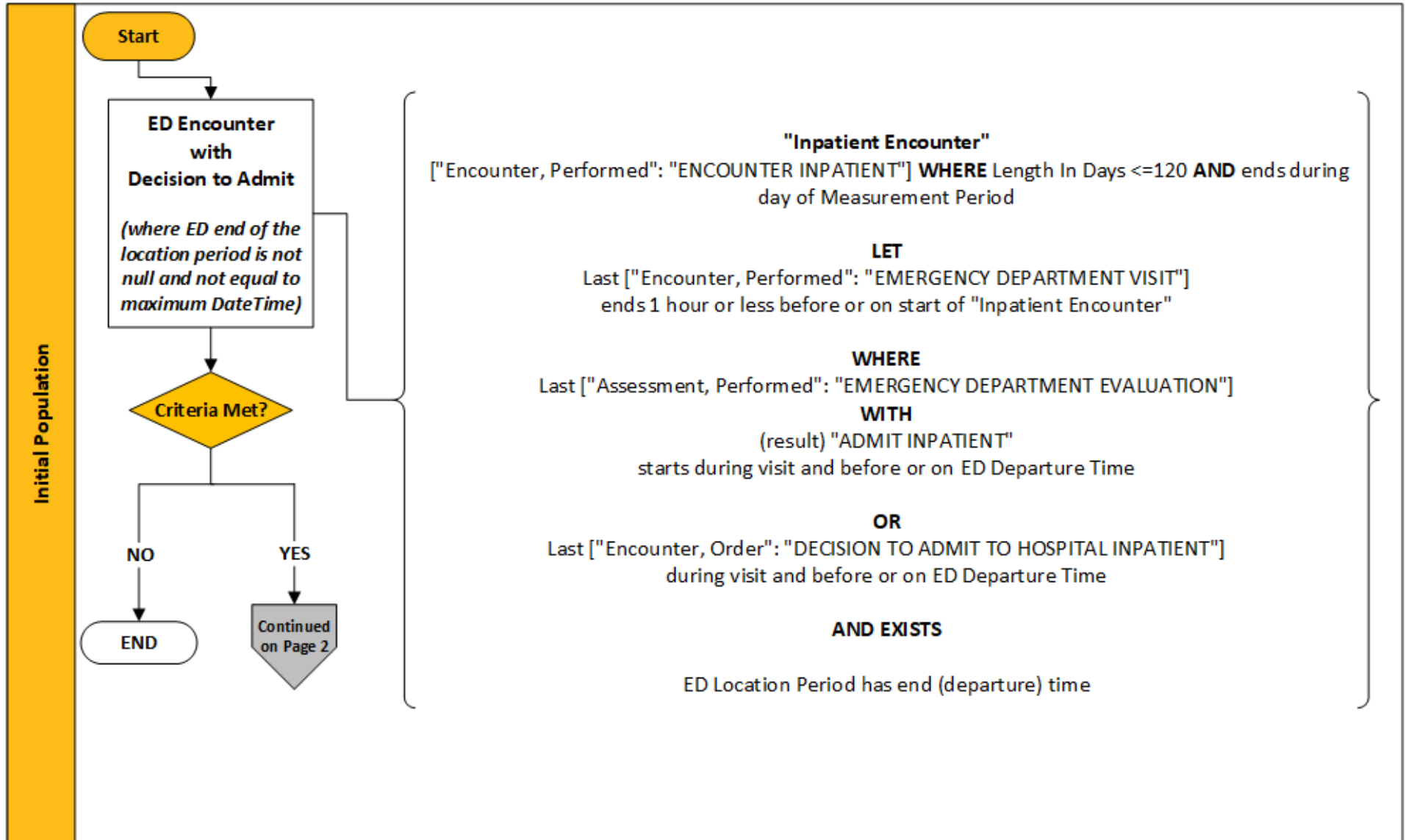


2023 eCQM Flow – CMS111v11: Median Admit Decision Time to ED Departure Time for Admitted Patients (ED-2)*

*This flow diagram represents an overview of population criteria requirements. Please refer to the eCQM measure specification for a complete list of definitions, direct reference codes, data or timing elements included in this measure and required for submission.

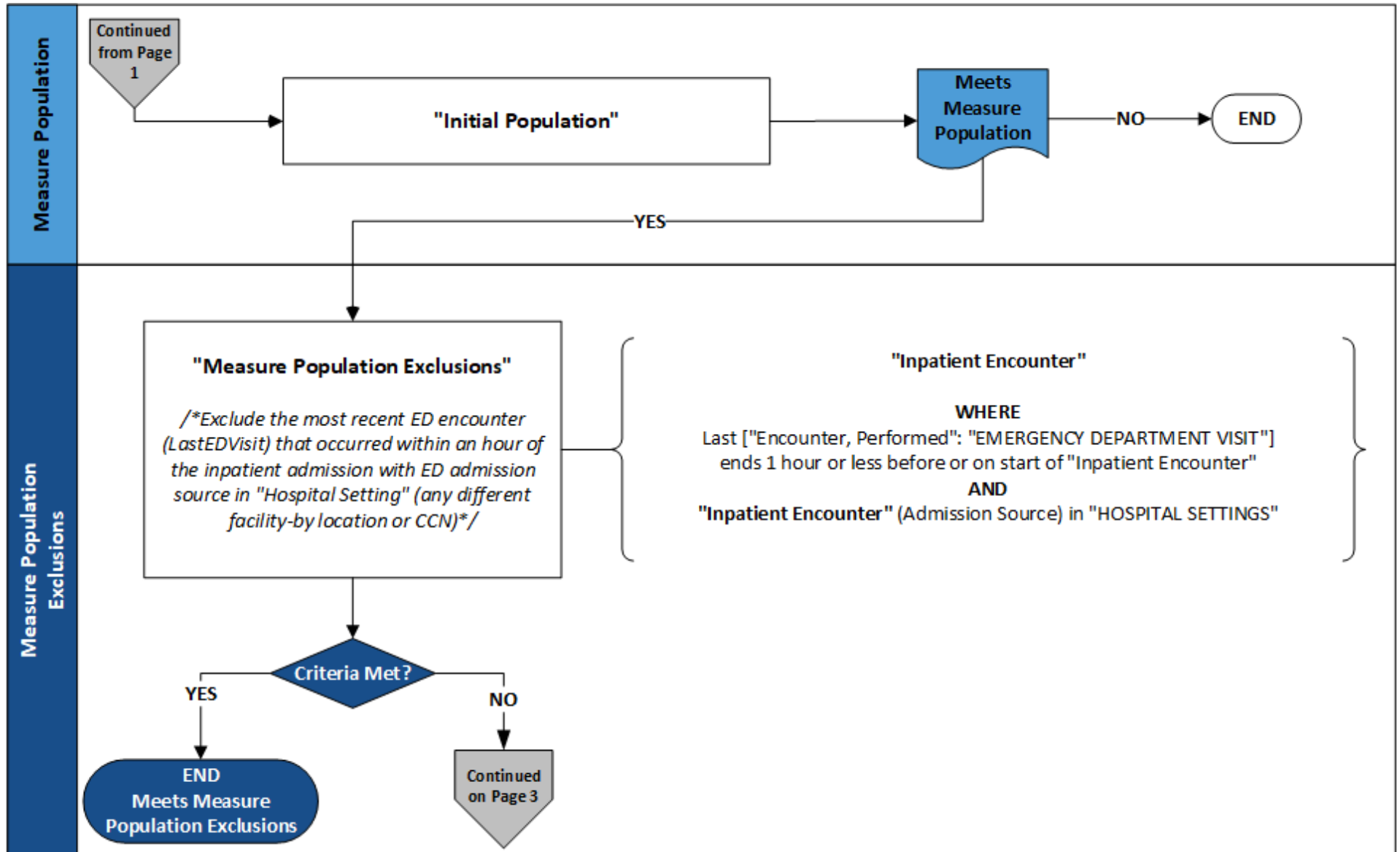
Measure Flow Diagram



2023 eCQM Flow – CMS111v11: Median Admit Decision Time to ED Departure Time for Admitted Patients (ED-2)*

*This flow diagram represents an overview of population criteria requirements. Please refer to the eCQM measure specification for a complete list of definitions, direct reference codes, data or timing elements included in this measure and required for submission.

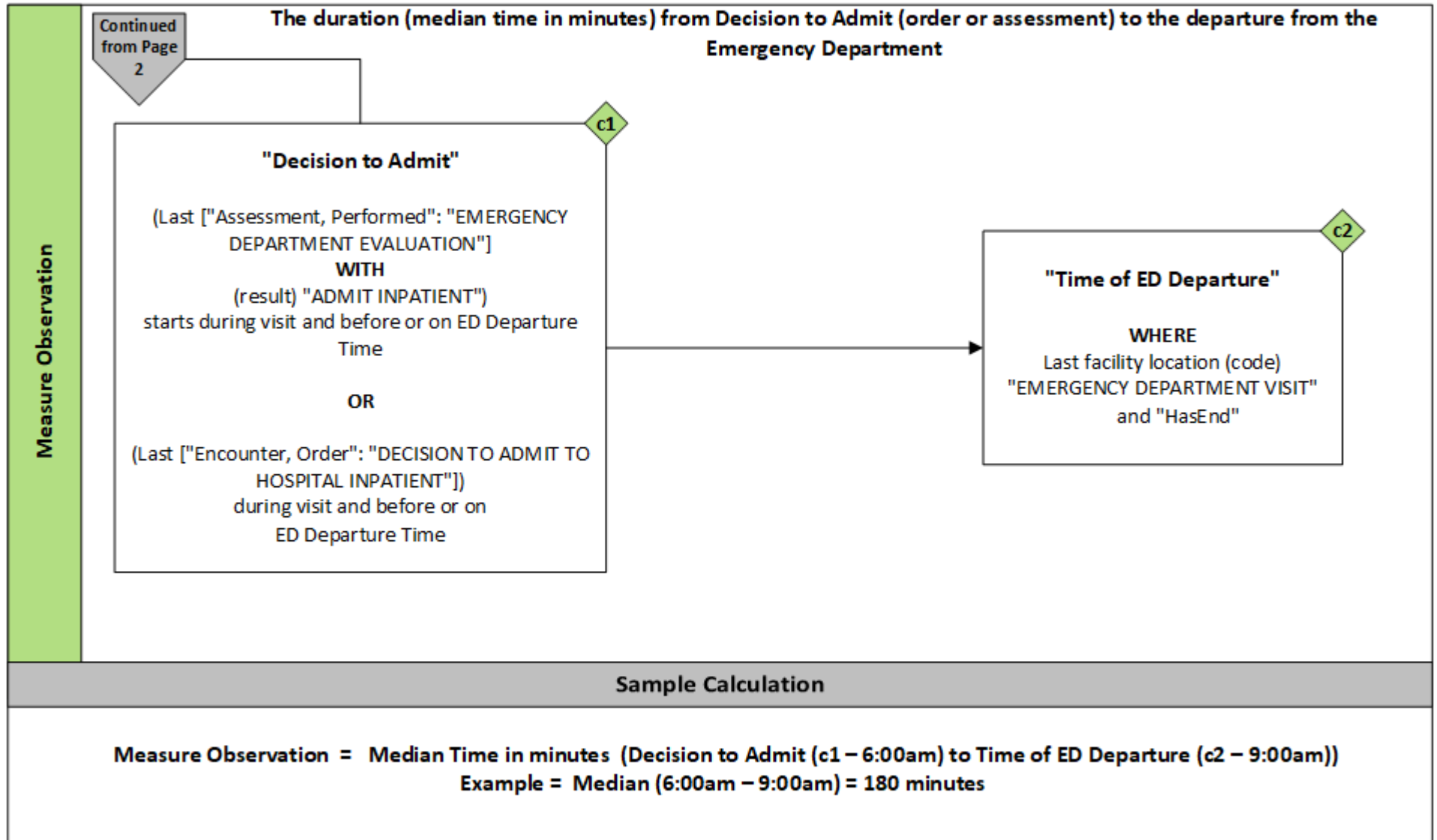
Measure Flow Diagram (Continued)



2023 eCQM Flow – CMS111v11: Median Admit Decision Time to ED Departure Time for Admitted Patients (ED-2)*

*This flow diagram represents an overview of population criteria requirements. Please refer to the eCQM measure specification for a complete list of definitions, direct reference codes, data or timing elements included in this measure and required for submission.

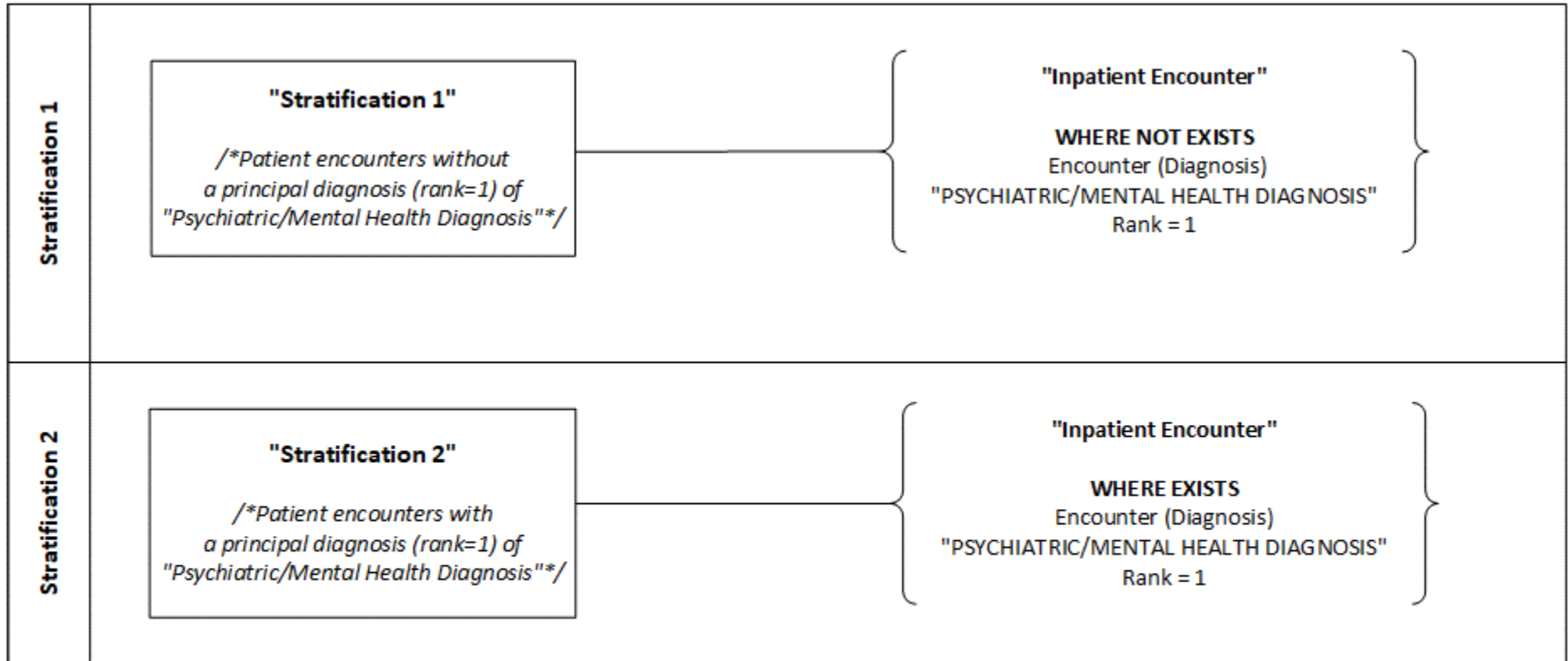
Measure Flow Diagram (Continued)



2023 eCQM Flow – CMS111v11: Median Admit Decision Time to ED Departure Time for Admitted Patients (ED-2)*

*This flow diagram represents an overview of population criteria requirements. Please refer to the eCQM measure specification for a complete list of definitions, direct reference codes, data or timing elements included in this measure and required for submission.

Measure Flow Diagram (Continued)



The measure observation should be reported without stratification and by each stratification criteria

2023 eCQM Flow – CMS111v11: Median Admit Decision Time to ED Departure Time for Admitted Patients (ED-2)*

**This flow diagram represents an overview of population criteria requirements. Please refer to the eCQM measure specification for a complete list of definitions, direct reference codes, data or timing elements included in this measure and required for submission.*

Measure Flow Narrative

The measure flow diagram on the preceding pages illustrates the steps to determine the population criteria for this measure.

| | |
|--------------------------------------|-----------------------------------------------------------------------------------------------------------------------------------------------------------------------------------------------------------------------------------------------------------------------------------------------------------------------------------------------------------------------------------------------|
| Measure Description | This measure assesses the median time (in minutes) from admit decision time to time of departure from the emergency department for emergency department patients admitted to inpatient status |
| Initial Population | <p>Start by identifying:</p> <ul style="list-style-type: none"> • Inpatient hospitalizations ending during the measurement period with length of stay less than or equal to 120 days • where the patient received services during the preceding emergency department (ED) visit at the facility when a decision to admit inpatient was made prior to departing the ED |
| Measure Population | The measure population criteria is the same as the initial population |
| Measure Population Exclusions | The measure population exclusions criteria identify a subset of the measure population by excluding emergency department encounters with an admission source in "Hospital Setting" (any different facility - by location or CCN) resulting in an inpatient stay |

2023 eCQM Flow – CMS111v11: Median Admit Decision Time to ED Departure Time for Admitted Patients (ED-2)*

**This flow diagram represents an overview of population criteria requirements. Please refer to the eCQM measure specification for a complete list of definitions, direct reference codes, data or timing elements included in this measure and required for submission.*

Measure Flow Narrative (Continued)

The measure flow diagram on the preceding pages illustrates the steps to determine the population criteria for this measure.

| | |
|----------------------------|------------------------------------------------------------------------------------------------------------------------------------------------------------------------------------------------------------------------------------------------------------------------------------------------------------------------------------------|
| Measure Observation | The measure observation criteria identify the encounters from the measure population (that did not meet the measure population exclusions criteria) and calculates the median time (in minutes) from the Decision to Admit to inpatient to the time the patient physically departs the emergency department to inpatient hospitalization |
| Stratification 1 | Stratification 1 is an aggregate of all patients seen in the emergency department and admitted as an inpatient who DO NOT have an inpatient encounter principal diagnosis (rank = 1) consistent with psychiatric/mental health disorders |
| Stratification 2 | Stratification 2 is an aggregate of all patients seen in the emergency department and admitted as an inpatient who DO have an inpatient encounter principal diagnosis (rank = 1) consistent with psychiatric/mental health disorders |