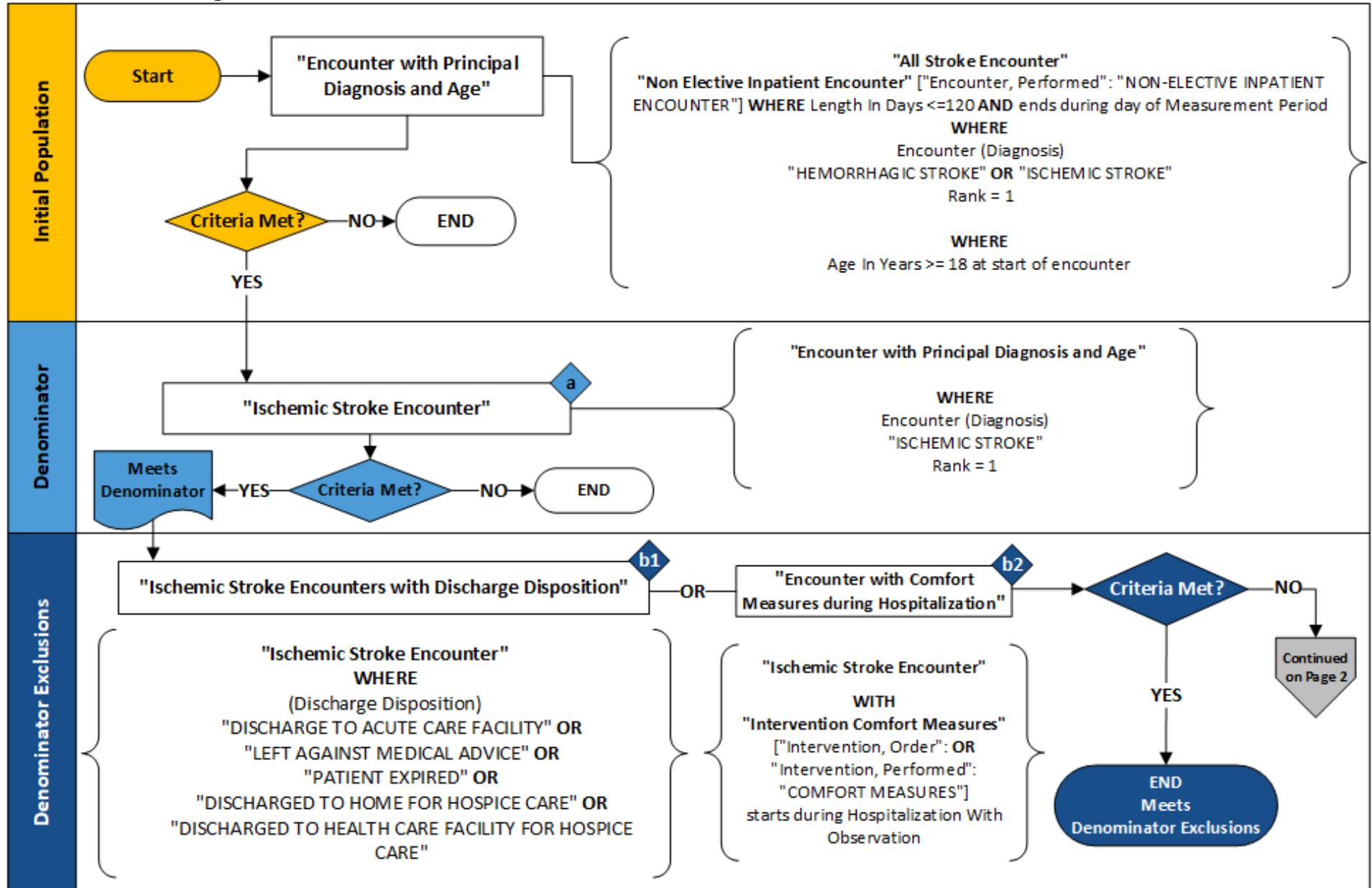


2023 eCQM Flow – CMS105v11: Discharged on Statin Medication (STK-06)*

*This flow diagram represents an overview of population criteria requirements. Please refer to the eCQM measure specification for a complete list of definitions, direct reference codes, data or timing elements included in this measure and required for submission.

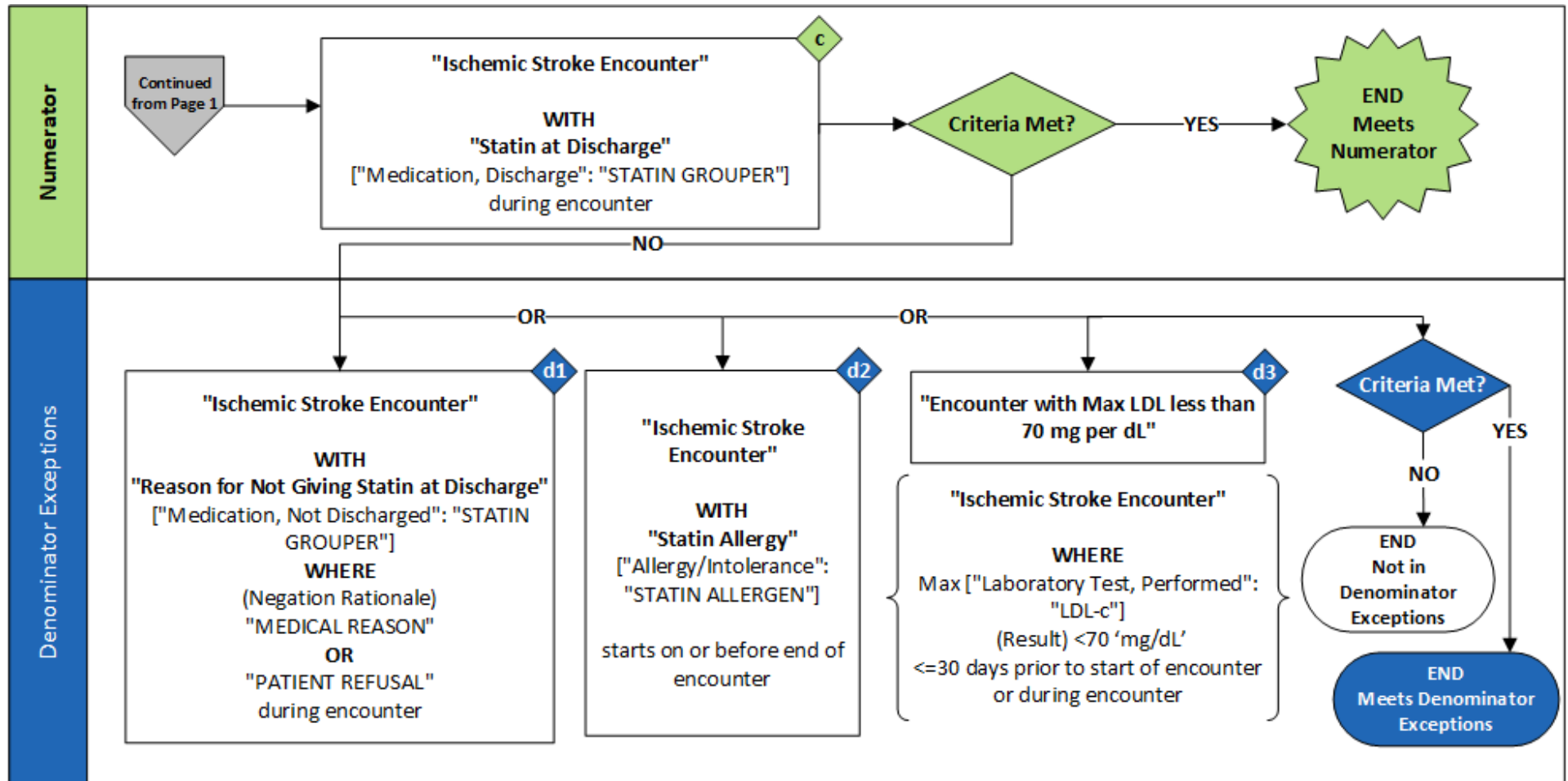
Measure Flow Diagram



2023 eCQM Flow – CMS105v11: Discharged on Statin Medication (STK-06)*

*This flow diagram represents an overview of population criteria requirements. Please refer to the eCQM measure specification for a complete list of definitions, direct reference codes, data or timing elements included in this measure and required for submission.

Measure Flow Diagram (Continued)



Sample Calculation

$$\text{Performance Rate} = \frac{\text{Numerator (c = 50)}}{\text{Denominator (a = 100) - Denominator Exclusions (b1 + b2 = 20) - Denominator Exceptions (d1 + d2 + d3 = 20)}} = 83\%$$

2023 eCQM Flow – CMS105v11: Discharged on Statin Medication (STK-06)*

**This flow diagram represents an overview of population criteria requirements. Please refer to the eCQM measure specification for a complete list of definitions, direct reference codes, data or timing elements included in this measure and required for submission.*

Measure Flow Narrative

The measure flow diagram on the preceding pages illustrates the steps to determine the population criteria for this measure.

Measure Description	This measure assesses ischemic stroke patients who are prescribed or continuing to take statin medication at hospital discharge
Initial Population	<p>Start by identifying the initial population criteria as inpatient hospitalization encounters with all of the following:</p> <ul style="list-style-type: none"> • patients age 18 and older • discharged from inpatient care (non-elective admissions) • a principal diagnosis of ischemic or hemorrhagic stroke • a length of stay less than or equal to 120 days that ends during the measurement period
Denominator	The denominator criteria further constrains the initial population by inpatient hospitalizations for patients with a principal diagnosis of ischemic stroke
Denominator Exclusions	<p>The denominator exclusions criteria identify a subset of the denominator population by excluding inpatient hospitalizations for patients with any of the following:</p> <ul style="list-style-type: none"> • admitted for elective carotid intervention (implicitly modeled by inclusion of only non-elective hospitalizations) • a documented discharge disposition of: <ul style="list-style-type: none"> • discharged to another hospital; or • left against medical advice; or • expired; or • discharged to either a health care facility or home, for hospice care • have comfort measures documented

2023 eCQM Flow – CMS105v11: Discharged on Statin Medication (STK-06)*

**This flow diagram represents an overview of population criteria requirements. Please refer to the eCQM measure specification for a complete list of definitions, direct reference codes, data or timing elements included in this measure and required for submission.*

Measure Flow Narrative (Continued)

The measure flow diagram on the preceding pages illustrates the steps to determine the population criteria for this measure.

Numerator	The numerator criteria identify a subset of the denominator population (that did not meet the denominator exclusions criteria) by including inpatient hospitalizations for patients prescribed or continuing to take statin medication at hospital discharge
Denominator Exceptions	The denominator exceptions criteria identify a subset of the denominator population (that did not meet the denominator exclusions criteria or numerator criteria) by excluding inpatient hospitalizations for patients with any of the following: <ul style="list-style-type: none">• a documented reason for not prescribing statin medication at discharge (either a qualifying medical reason or patient refusal)• a maximum LDL-c lab result of less than 70 mg/dL <= 30 days prior to arrival or any time during the hospital stay• a statin allergy