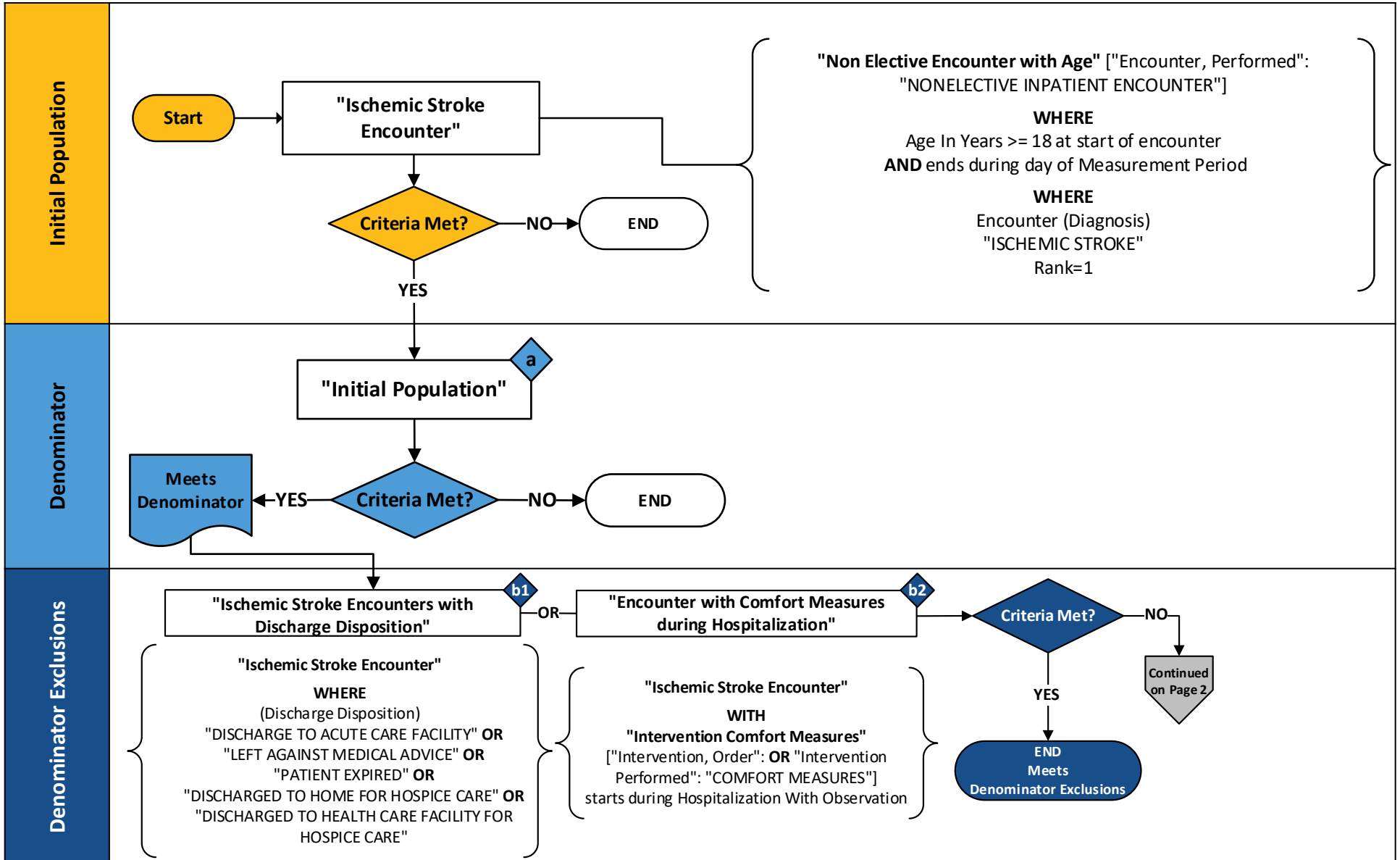


2025 eCQM Flow – CMS104v13: Discharged on Antithrombotic Therapy (STK-2)*

*This flow diagram represents an overview of population criteria requirements. Please refer to the eCQM measure specification for a complete list of definitions, direct reference codes, data or timing elements included in this measure and required for submission.

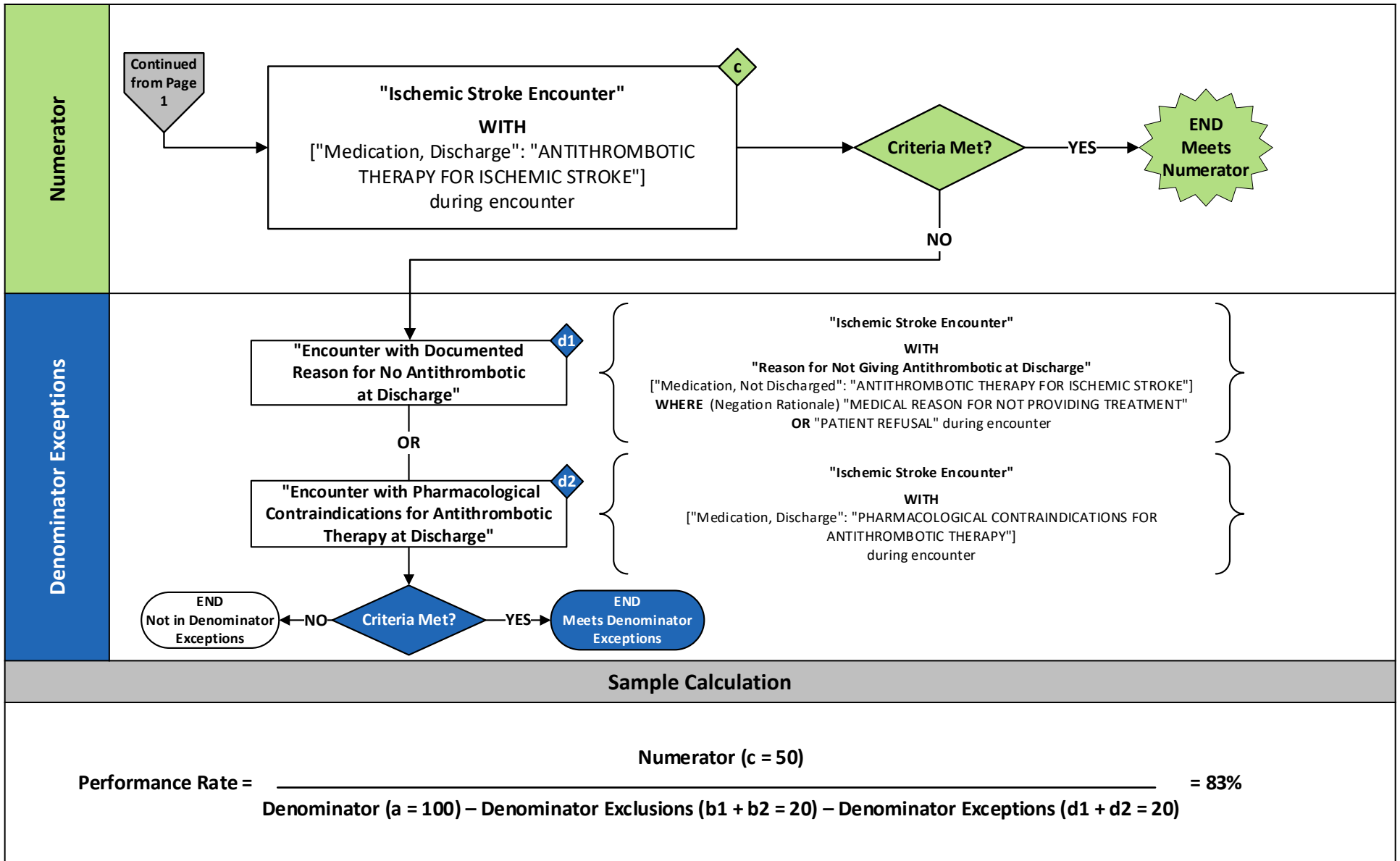
Measure Flow Diagram



2025 eCQM Flow – CMS104v13: Discharged on Antithrombotic Therapy (STK-2)*

*This flow diagram represents an overview of population criteria requirements. Please refer to the eCQM measure specification for a complete list of definitions, direct reference codes, data or timing elements included in this measure and required for submission.

Measure Flow Diagram (Continued)



2025 eCQM Flow – CMS104v13: Discharged on Antithrombotic Therapy (STK-2)*

**This flow diagram represents an overview of population criteria requirements. Please refer to the eCQM measure specification for a complete list of definitions, direct reference codes, data or timing elements included in this measure and required for submission.*

Measure Flow Narrative

The measure flow diagram on the preceding pages illustrates the steps to determine the population criteria for this measure.

| | |
|-------------------------------|---|
| Measure Description | This measure assesses ischemic stroke patients prescribed or continuing to take antithrombotic therapy at hospital discharge |
| Initial Population | <p>Start by identifying the initial population criteria as inpatient hospitalizations with all of the following:</p> <ul style="list-style-type: none"> • patients age 18 and older • discharged from inpatient care (non-elective admissions) • a principal diagnosis of ischemic stroke • that ends during the measurement period |
| Denominator | The denominator criteria is equal to the initial population |
| Denominator Exclusions | <p>The denominator exclusions criteria are used to identify a subset of the denominator population by excluding inpatient hospitalizations for patients with any of the following:</p> <ul style="list-style-type: none"> • admitted for elective carotid intervention (implicitly modeled by inclusion of only non-elective hospitalizations) • a documented discharge disposition of: <ul style="list-style-type: none"> • discharged to another hospital; or • left against medical advice; or • expired; or • discharged to either a health care facility or home for hospice care • have comfort measures documented |

2025 eCQM Flow – CMS104v13: Discharged on Antithrombotic Therapy (STK-2)*

**This flow diagram represents an overview of population criteria requirements. Please refer to the eCQM measure specification for a complete list of definitions, direct reference codes, data or timing elements included in this measure and required for submission.*

Measure Flow Narrative (Continued)

The measure flow diagram on the preceding pages illustrates the steps to determine the population criteria for this measure.

| | |
|-------------------------------|---|
| Numerator | The numerator criteria identify a subset of the denominator population (that did not meet the denominator exclusions criteria) by including inpatient hospitalizations for patients prescribed or continuing to take antithrombotic therapy at hospital discharge |
| Denominator Exceptions | The denominator exceptions criteria identify a subset of the denominator population (that did not meet the denominator exclusions criteria or numerator criteria) by excluding inpatient hospitalizations for patients who have either: <ul style="list-style-type: none">• a documented reason for not prescribing antithrombotic therapy at discharge (either a qualifying medical reason or patient refusal)• pharmacological contraindications for antithrombotic therapy (i.e., given Prasugrel) at discharge |