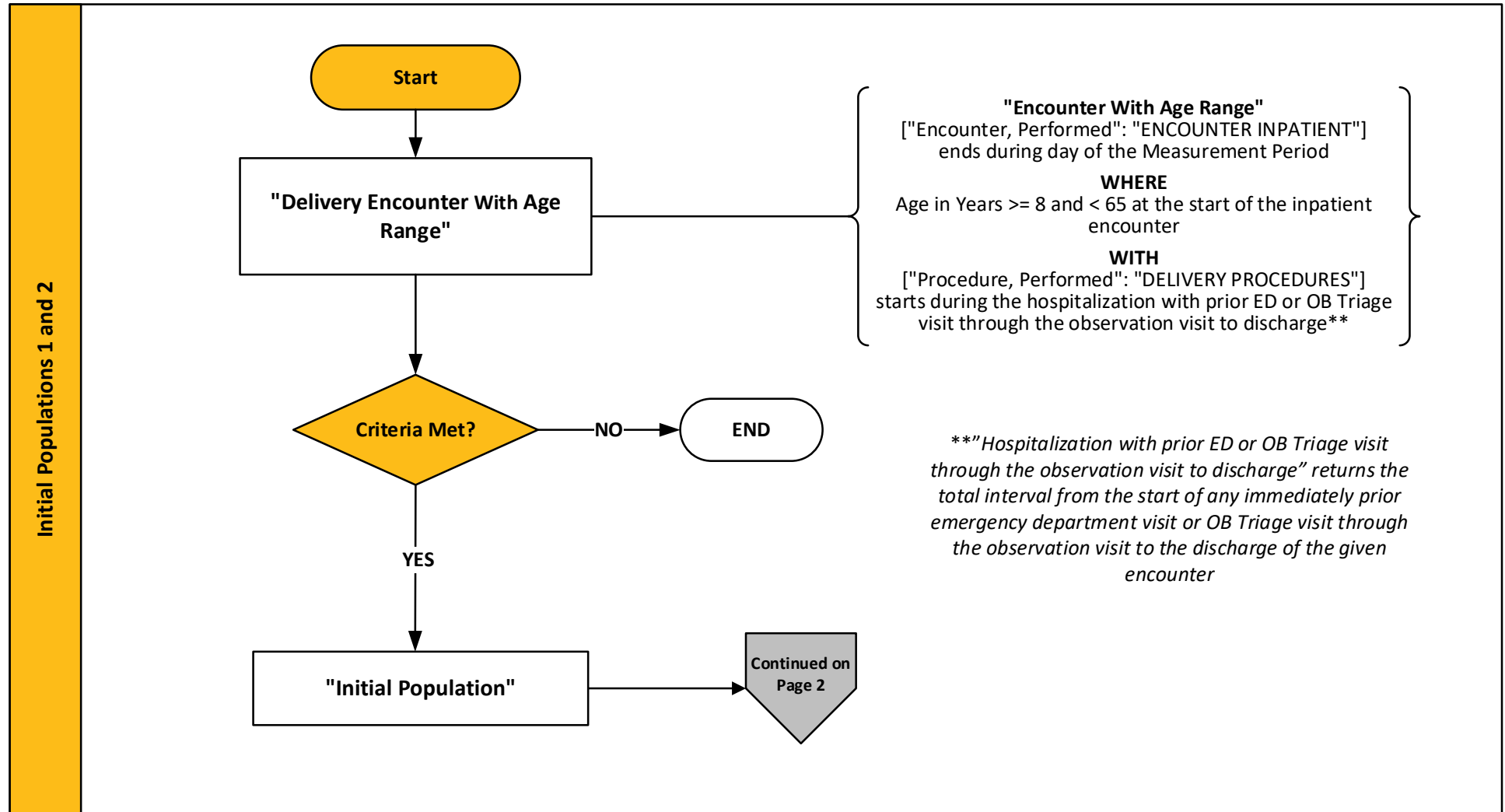


## 2026 eCQM Flow – CMS1028v4: Severe Obstetric Complications (PC-07)\*

\*This flow diagram represents an overview of population criteria requirements. Please refer to the eCQM measure specification for a complete list of definitions, direct reference codes, data or timing elements included in this measure and required for submission.

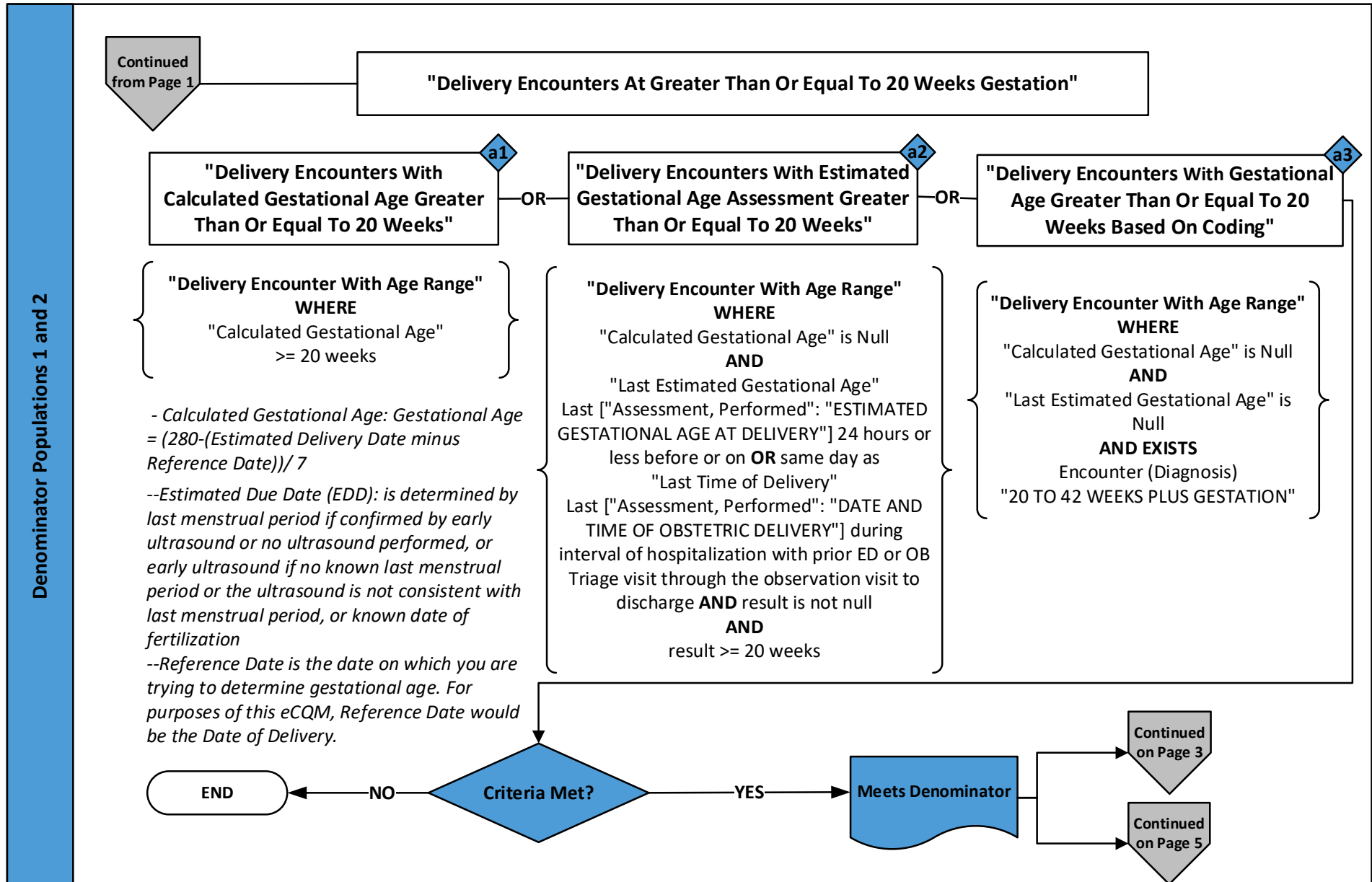
### Measure Flow Diagram



## 2026 eCQM Flow – CMS1028v4: Severe Obstetric Complications (PC-07)\*

\*This flow diagram represents an overview of population criteria requirements. Please refer to the eCQM measure specification for a complete list of definitions, direct reference codes, data or timing elements included in this measure and required for submission.

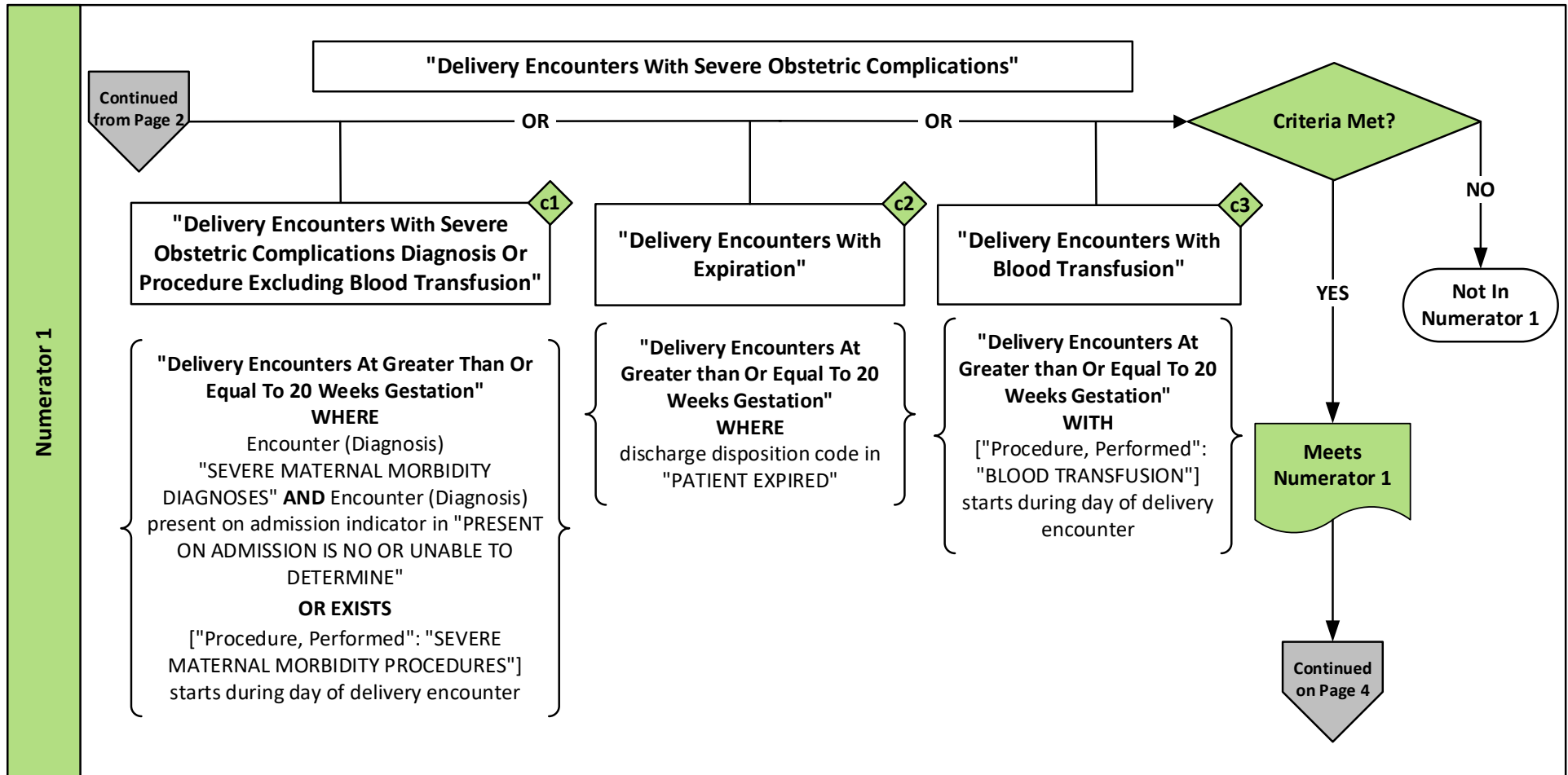
### Measure Flow Diagram (Continued)



## 2026 eCQM Flow – CMS1028v4: Severe Obstetric Complications (PC-07)\*

\*This flow diagram represents an overview of population criteria requirements. Please refer to the eCQM measure specification for a complete list of definitions, direct reference codes, data or timing elements included in this measure and required for submission.

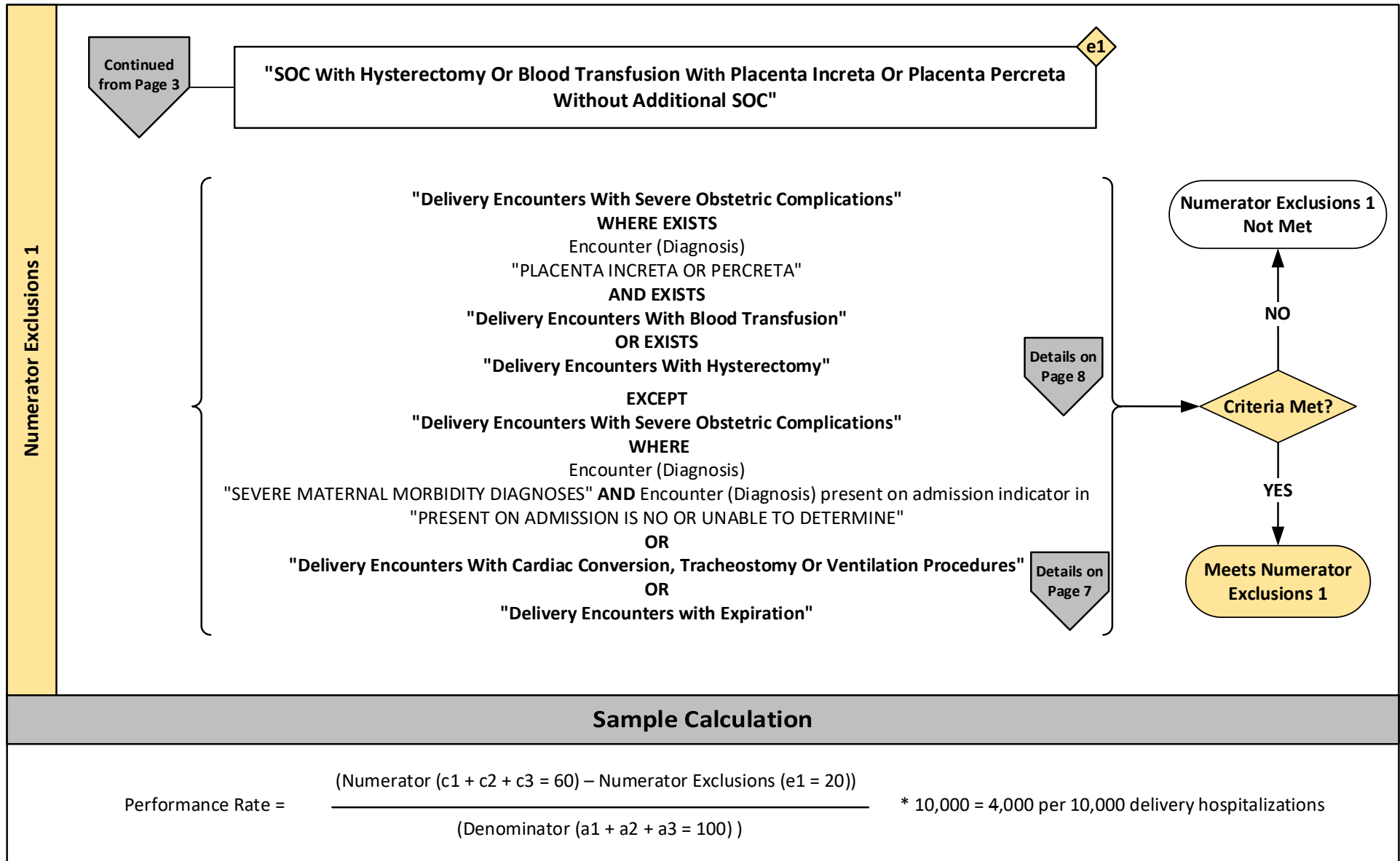
### Measure Flow Diagram (Continued)



## 2026 eCQM Flow – CMS1028v4: Severe Obstetric Complications (PC-07)\*

\*This flow diagram represents an overview of population criteria requirements. Please refer to the eCQM measure specification for a complete list of definitions, direct reference codes, data or timing elements included in this measure and required for submission.

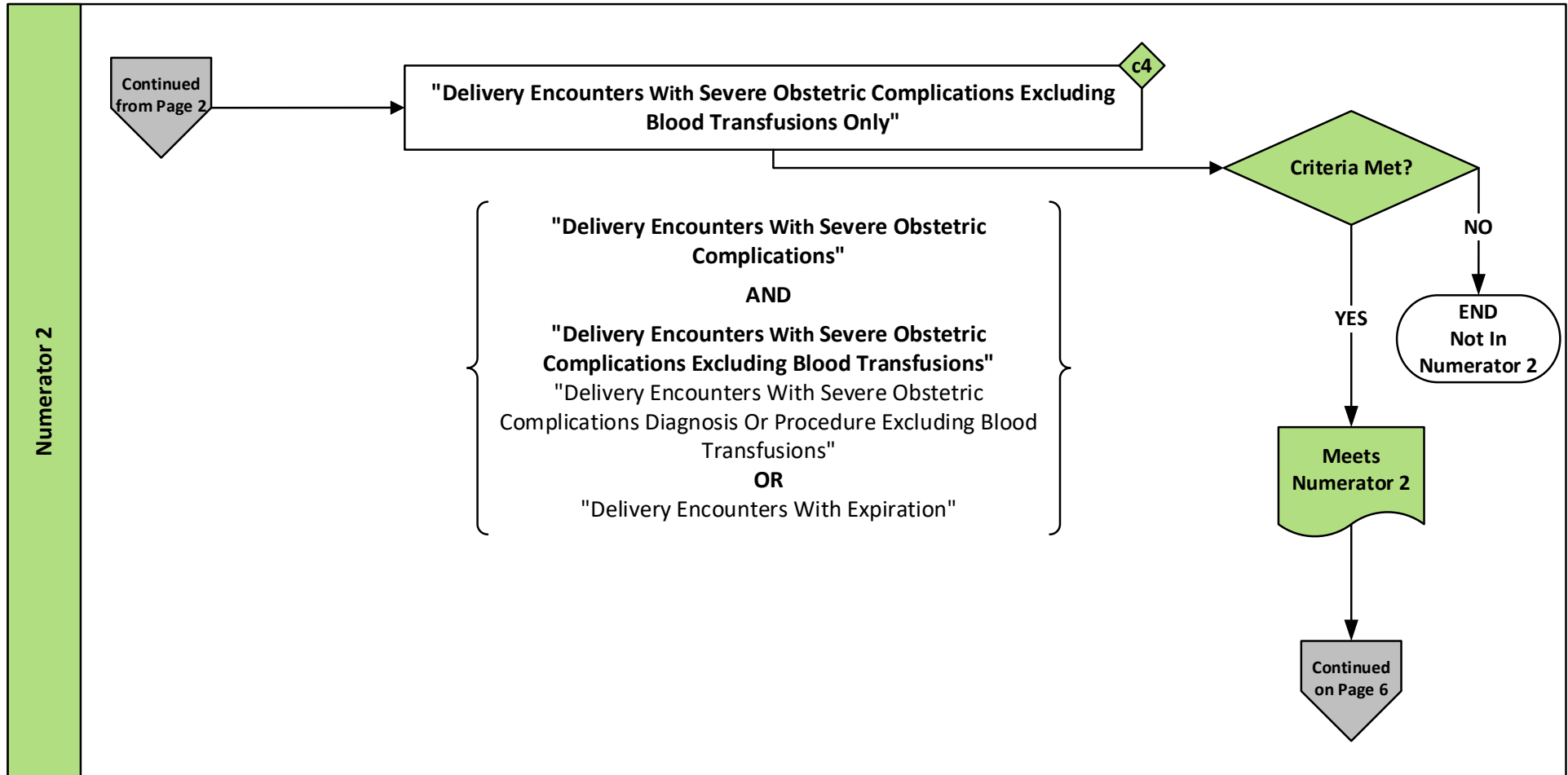
### Measure Flow Diagram (Continued)



## 2026 eCQM Flow – CMS1028v4: Severe Obstetric Complications (PC-07)\*

*\*This flow diagram represents an overview of population criteria requirements. Please refer to the eCQM measure specification for a complete list of definitions, direct reference codes, data or timing elements included in this measure and required for submission.*

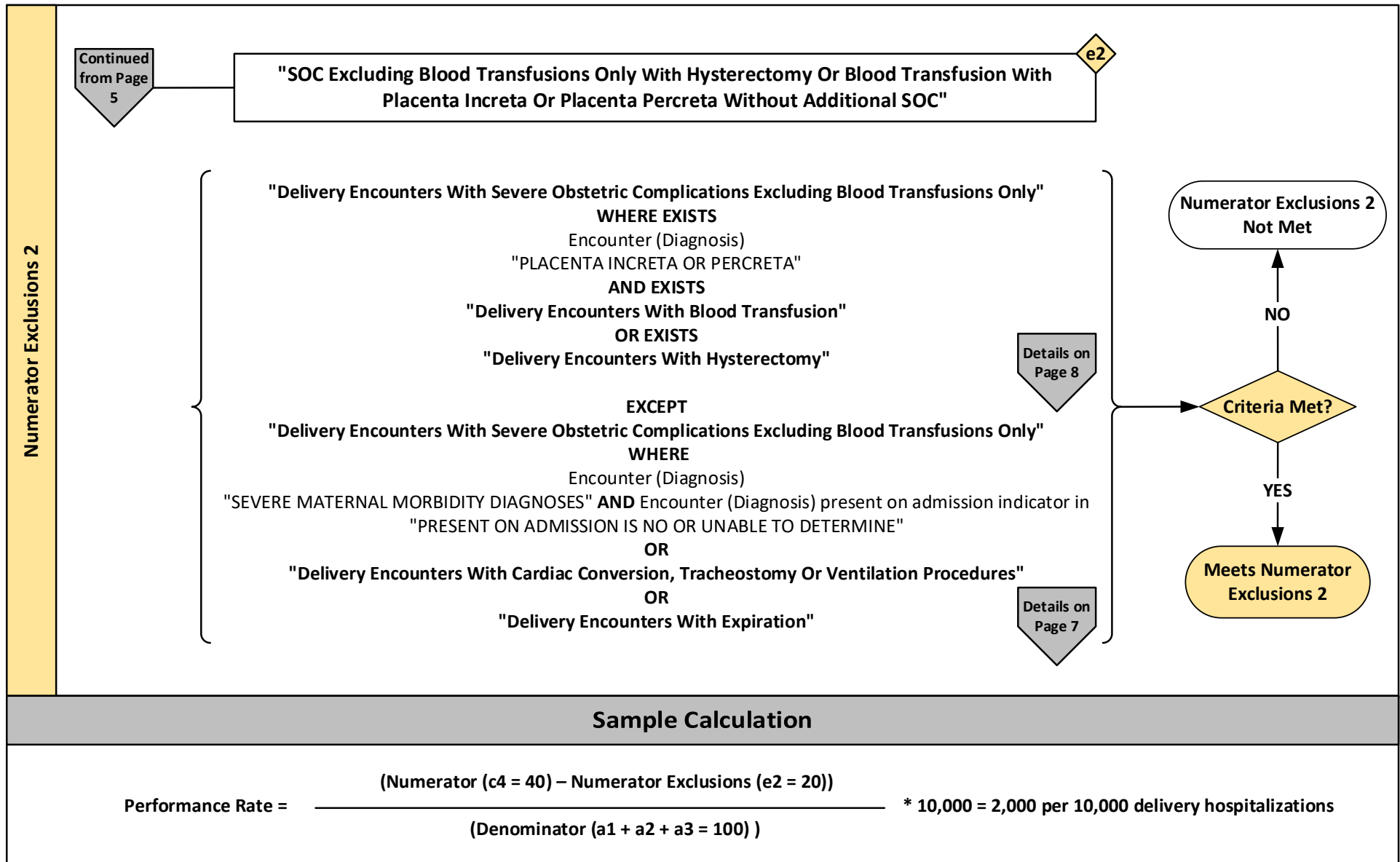
### Measure Flow Diagram (Continued)



## 2026 eCQM Flow – CMS1028v4: Severe Obstetric Complications (PC-07)\*

\*This flow diagram represents an overview of population criteria requirements. Please refer to the eCQM measure specification for a complete list of definitions, direct reference codes, data or timing elements included in this measure and required for submission.

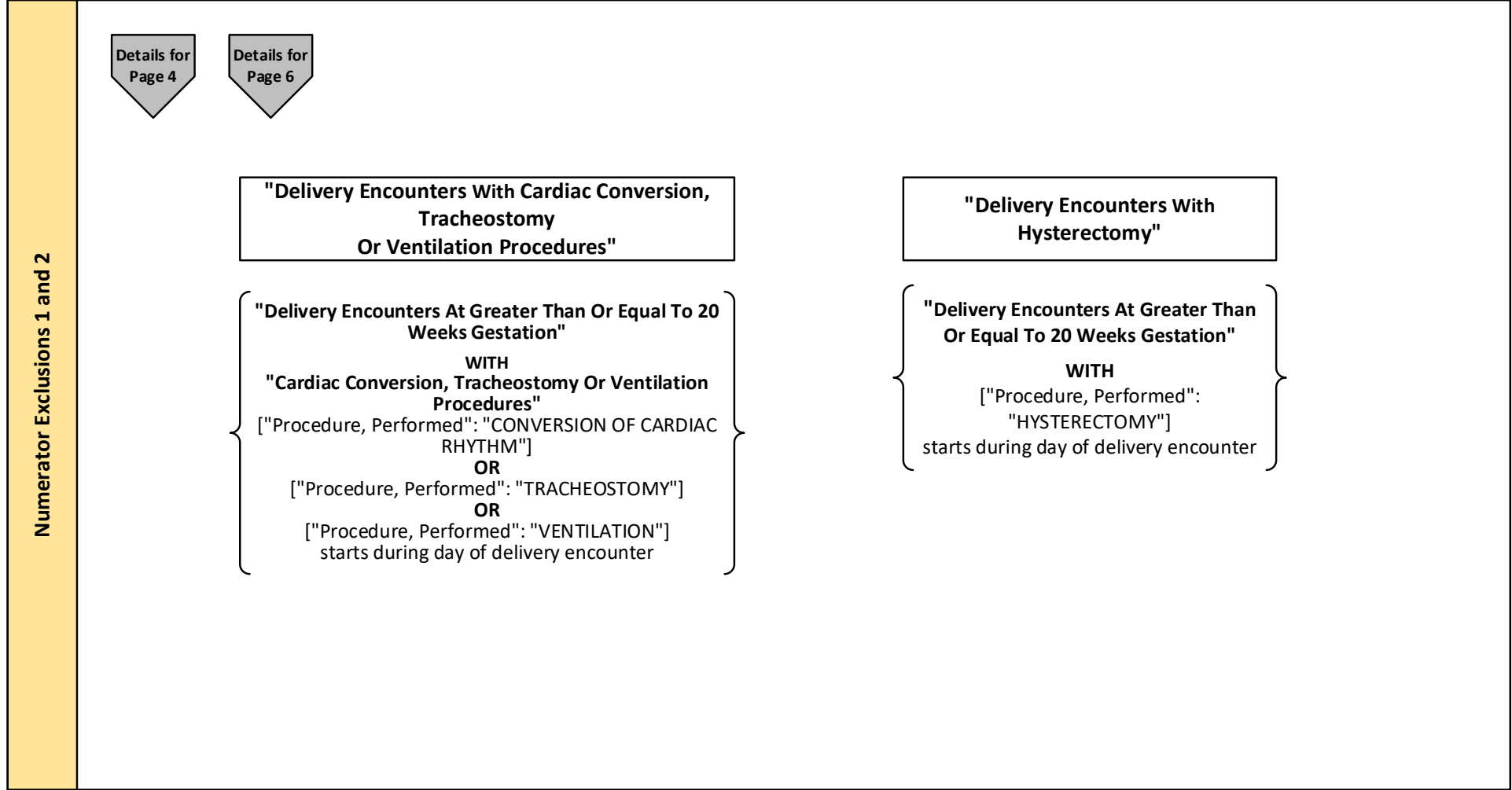
### Measure Flow Diagram (Continued)



2026 eCQM Flow – CMS1028v4: Severe Obstetric Complications (PC-07)\*

*\*This flow diagram represents an overview of population criteria requirements. Please refer to the eCQM measure specification for a complete list of definitions, direct reference codes, data or timing elements included in this measure and required for submission.*

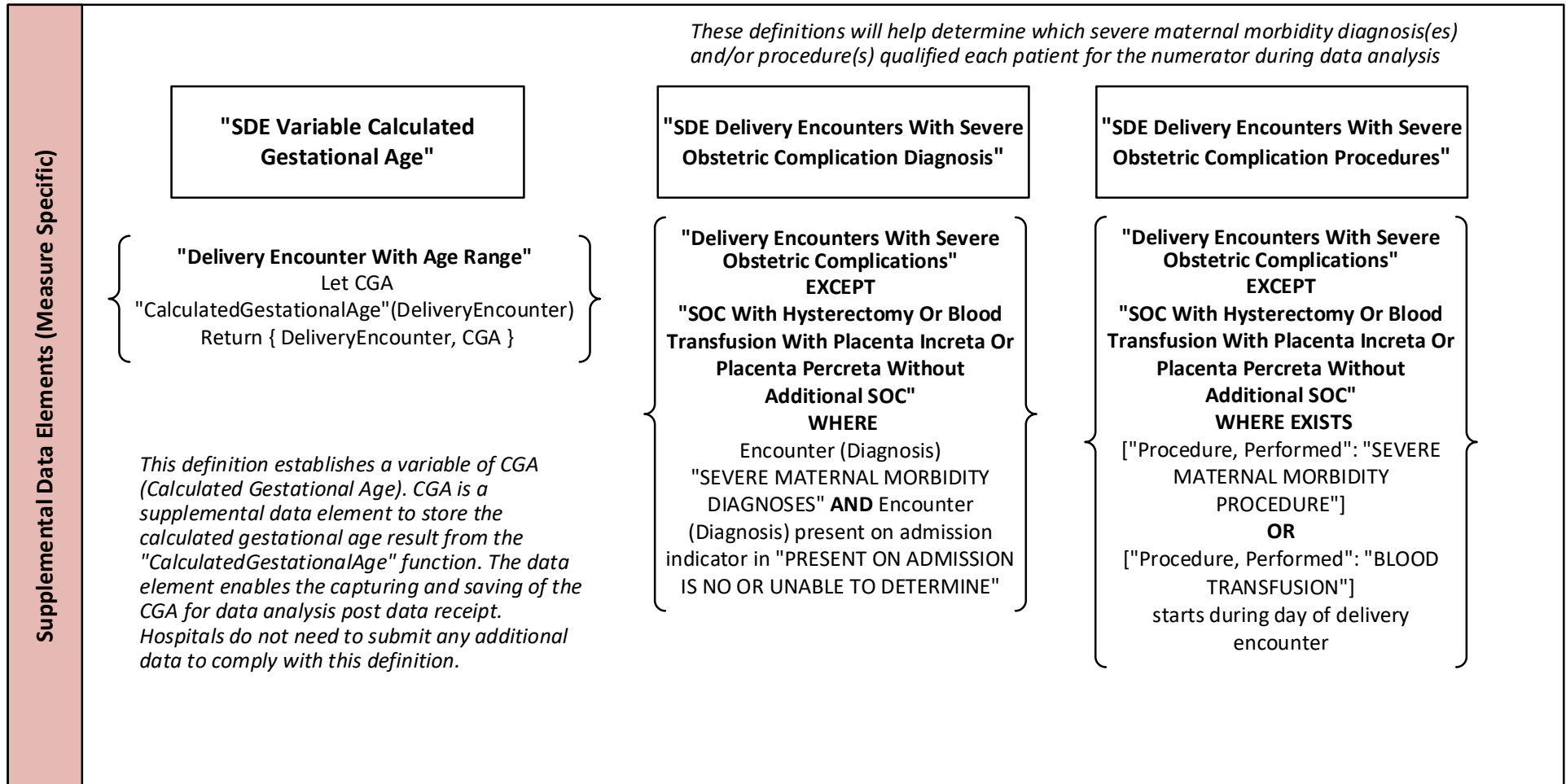
Measure Flow Diagram (Continued)



## 2026 eCQM Flow – CMS1028v4: Severe Obstetric Complications (PC-07)\*

\*This flow diagram represents an overview of population criteria requirements. Please refer to the eCQM measure specification for a complete list of definitions, direct reference codes, data or timing elements included in this measure and required for submission.

### Measure Flow Diagram (Continued)





2026 eCQM Flow – **CMS1028v4: Severe Obstetric Complications (PC-07)\***

*\*This flow diagram represents an overview of population criteria requirements. Please refer to the eCQM measure specification for a complete list of definitions, direct reference codes, data or timing elements included in this measure and required for submission.*

**Measure Flow Narrative**

The measure flow diagram on the preceding pages illustrates the steps to determine the population criteria for this measure.

Measure Description	This measure identifies patients with severe obstetric complications that occur during the inpatient delivery hospitalization
Initial Population	Population Criteria 1 and 2: Start by identifying the initial population criteria as inpatient hospitalizations for patients age >= 8 years and < 65 admitted to the hospital for inpatient acute care who undergo a delivery procedure with a discharge date that ends during the measurement period
Denominator	Population Criteria 1 and 2: The denominator further constrains the initial population to include inpatient hospitalizations for patients delivering stillborn or live birth with >= 20 weeks, 0 days gestation completed
Denominator Exclusions	None

## 2026 eCQM Flow – CMS1028v4: Severe Obstetric Complications (PC-07)\*

*\*This flow diagram represents an overview of population criteria requirements. Please refer to the eCQM measure specification for a complete list of definitions, direct reference codes, data or timing elements included in this measure and required for submission.*

### Measure Flow Narrative (Continued)

The measure flow diagram on the preceding pages illustrates the steps to determine the population criteria for this measure.

Numerator	<p>Two numerator populations are defined for this measure:</p> <ul style="list-style-type: none"><li>Population Criteria 1, Numerator: All Severe Obstetric Complications (SOC)</li><li>Population Criteria 2, Numerator: Delivery encounters with SOC excluding encounters where blood transfusion was the only SOC Inpatient hospitalizations for patients with severe obstetric complications (not present on admission that occur during the current delivery encounter) including the following: Severe maternal morbidity diagnoses; Severe maternal morbidity procedures; Discharge disposition of expired</li></ul>
Numerator Exclusions	<ul style="list-style-type: none"><li>Population Criteria 1, Numerator Exclusion: Inpatient hospitalizations with blood transfusion or hysterectomy with a diagnosis of placenta percreta or placenta increta and no additional severe obstetrical complications</li><li>Population Criteria 2, Numerator Exclusion: Inpatient hospitalizations with SOC excluding encounters where transfusion was the only SOC, with a hysterectomy or blood transfusion with a diagnosis of placenta percreta or placenta increta and no additional severe obstetrical complications</li></ul>

## 2026 eCQM Flow – CMS1028v4: Severe Obstetric Complications (PC-07)\*

*\*This flow diagram represents an overview of population criteria requirements. Please refer to the eCQM measure specification for a complete list of definitions, direct reference codes, data or timing elements included in this measure and required for submission.*

### Measure Flow Narrative (Continued)

The measure flow diagram on the preceding pages illustrates the steps to determine the population criteria for this measure.

Risk Adjustment	<p>Pre-existing conditions and variables must be present on admission:</p> <ul style="list-style-type: none"><li>• <i>Anemia (includes sickle cell disease)</i></li><li>• <i>Asthma</i></li><li>• <i>Autoimmune Disease</i></li><li>• <i>Bariatric Surgery</i></li><li>• <i>Bleeding Disorder</i></li><li>• <i>Cardiac Disease</i></li><li>• <i>Gastrointestinal Disease</i></li><li>• <i>Gestational Diabetes</i></li><li>• <i>HIV</i></li><li>• <i>Economic Housing Instability</i></li><li>• <i>Hypertension</i></li><li>• <i>Maternal Age (derived from birthdate)</i></li><li>• <i>Mental Health Disorder</i></li><li>• <i>Morbid Obesity</i></li><li>• <i>Multiple Pregnancy</i></li><li>• <i>Neuromuscular Disease</i></li><li>• <i>Other Pre-eclampsia</i></li><li>• <i>Placenta Previa</i></li><li>• <i>Placental Abruption</i></li></ul> <ul style="list-style-type: none"><li>• <i>Placental Accreta Spectrum</i></li><li>• <i>Pre-existing Diabetes</i></li><li>• <i>Preterm Birth</i></li><li>• <i>Previous Cesarean</i></li><li>• <i>Pulmonary Hypertension</i></li><li>• <i>Renal Disease</i></li><li>• <i>Severe Pre-eclampsia</i></li><li>• <i>Substance Abuse</i></li><li>• <i>Thyrotoxicosis</i></li><li>• <i>Long-term Anticoagulant Use</i></li><li>• <i>Obstetric VTE</i></li></ul> <p><i>Additional variables used for risk adjustment include Lab and Physical Exam Results. Report the first resulted value 24 hours prior to start of encounter and before time of delivery in UCUM units specified:</i></p> <ul style="list-style-type: none"><li>• <i>Heart rate: {beats}/min</i></li><li>• <i>Systolic blood pressure: mm[Hg]</i></li><li>• <i>White blood cell count: 10*3/uL</i></li><li>• <i>Hematocrit: %</i></li></ul> <p>The Severe Obstetric Complications Risk Adjustment Methodology Report is available on the eCQI Resource Center (<a href="https://ecqi.healthit.gov">https://ecqi.healthit.gov</a>).</p>
-----------------	---

# 2026 eCQM Flow – CMS1028v4: Severe Obstetric Complications (PC-07)\*

*\*This flow diagram represents an overview of population criteria requirements. Please refer to the eCQM measure specification for a complete list of definitions, direct reference codes, data or timing elements included in this measure and required for submission.*

## Measure Flow Narrative (Continued)

The measure flow diagram on the preceding pages illustrates the steps to determine the population criteria for this measure.

Supplemental Data Elements (Measure Specific)	<p>For every patient evaluated by this measure also identify payer, race, ethnicity, sex</p> <p>No additional supplemental data elements are required to be submitted by reporting entities; all other needed data points are calculated following data receipt</p>
--	---