

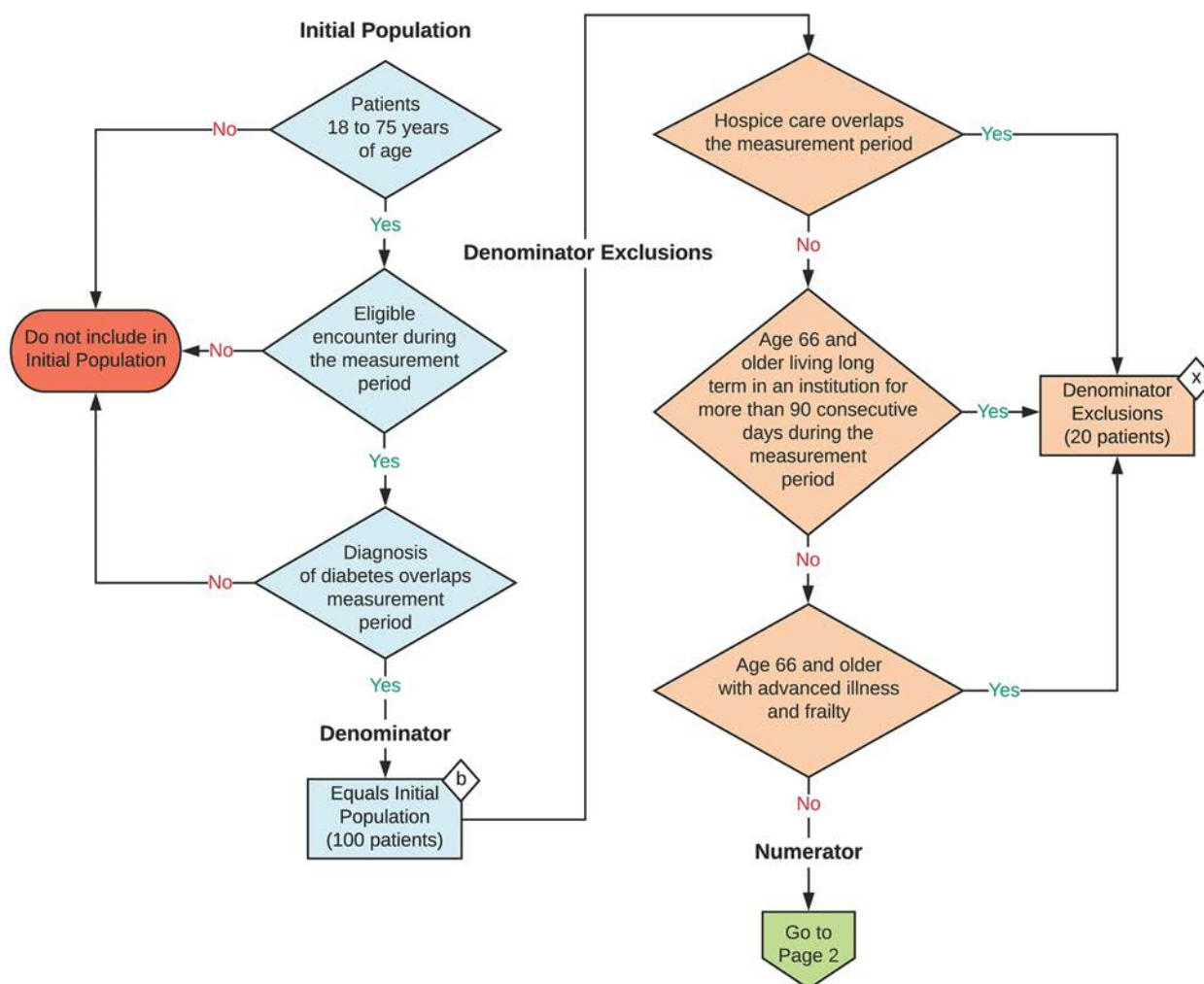
**2021 eCQM Flow**  
**eCQM Identifier: CMS122v9**

**NOTE:** This flow diagram represents an overview of population criteria requirements. Refer to the eCQM specification for a complete list of data elements included in this measure and required for submission.

**Diabetes: Hemoglobin A1c (HbA1c) Poor Control (> 9%)**

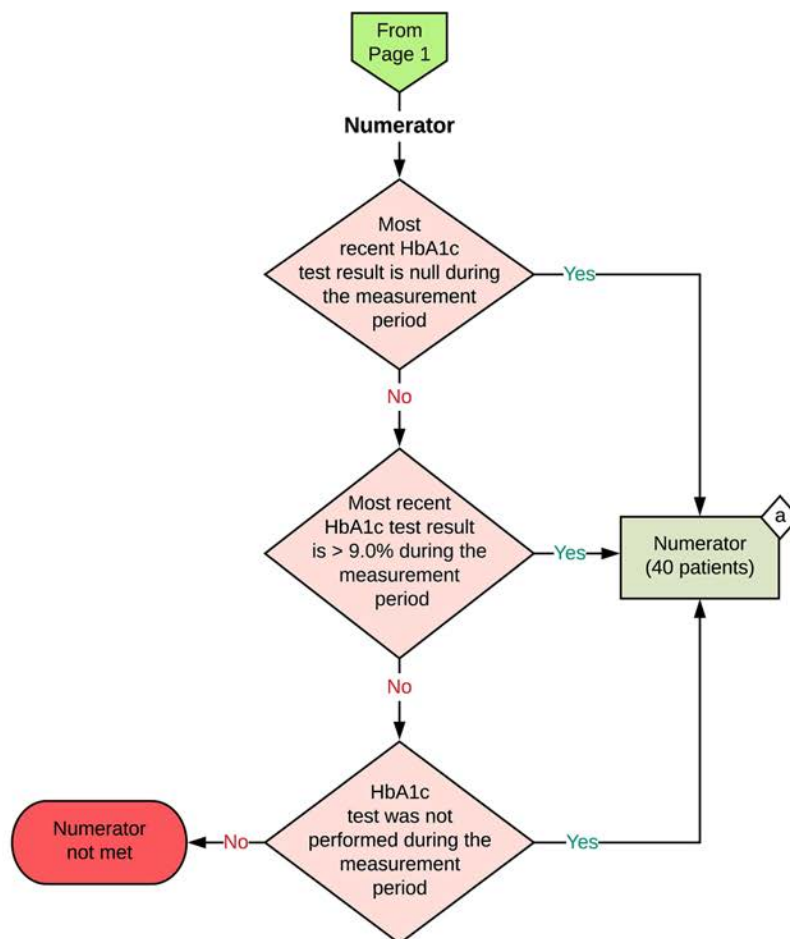
Percentage of patients 18-75 years of age with diabetes who had hemoglobin A1c > 9.0% during the measurement period

This eCQM is a patient-based measure



2021 eCQM Flow  
eCQM Identifier: CMS122v9

Diabetes: Hemoglobin A1c (HbA1c) Poor Control (> 9%)



#### Sample Calculation

Performance Rate =

Numerator (a = 40 patients)

Denominator (b = 100 patients) - Denominator Exclusions (x = 20 patients)

$$= \frac{40}{80} = 50\%$$

**eCQM Identifier: CMS122v9****eCQM Title: Diabetes: Hemoglobin A1c (HbA1c) Poor Control (>9%)**

**NOTE:** This flow diagram represents an overview of population criteria requirements. Refer to the eCQM specification for a complete list of data elements included in this measure and required for submission.

**Description:** Percentage of patients 18 to 75 years of age with diabetes who had hemoglobin A1c >9.0% during the measurement period.

**This eCQM is a patient-based measure.**

**eCQM Flow Narrative****Initial Population**

Start by identifying the Initial Population, which includes patients 18 to 75 years of age with an eligible encounter during measurement period and with a diagnosis of diabetes that overlaps the measurement period.

**Denominator**

The Denominator equals the Initial Population. In the sample calculation provided at the end of the eCQM flow, the Denominator is equal to 100 patients.

**Denominator Exclusions**

The Denominator Exclusions criteria identify a subset of the Denominator population by excluding patients whose hospice care overlaps the measurement period; patients age 66 and older who are living long term in an institution for more than 90 consecutive days during the measurement period; or patients age 66 and older with advanced illness and frailty. In the sample calculation provided at the end of the eCQM flow, the Denominator Exclusions are equal to 20 patients.

**Numerator**

The Numerator criteria identify a subset of the Denominator population (that did not meet the Denominator Exclusions criteria) by including patients whose most recent HbA1c test result is null, patients whose most recent HbA1c test result is greater than 9 percent, or patients who did not have a HbA1c test performed during the measurement period. In the sample calculation provided at the end of the eCQM flow, the Numerator is equal to 40 patients.

**Sample Calculation**

A sample calculation is provided to help determine how the measure performance rate is derived. The measure performance rate is calculated by dividing the Numerator (total equals 40 patients) by the difference between the Denominator (total equals 100 patients) and the Denominator Exclusions (total equals 20 patients), which is equal to a score of 50 percent.