

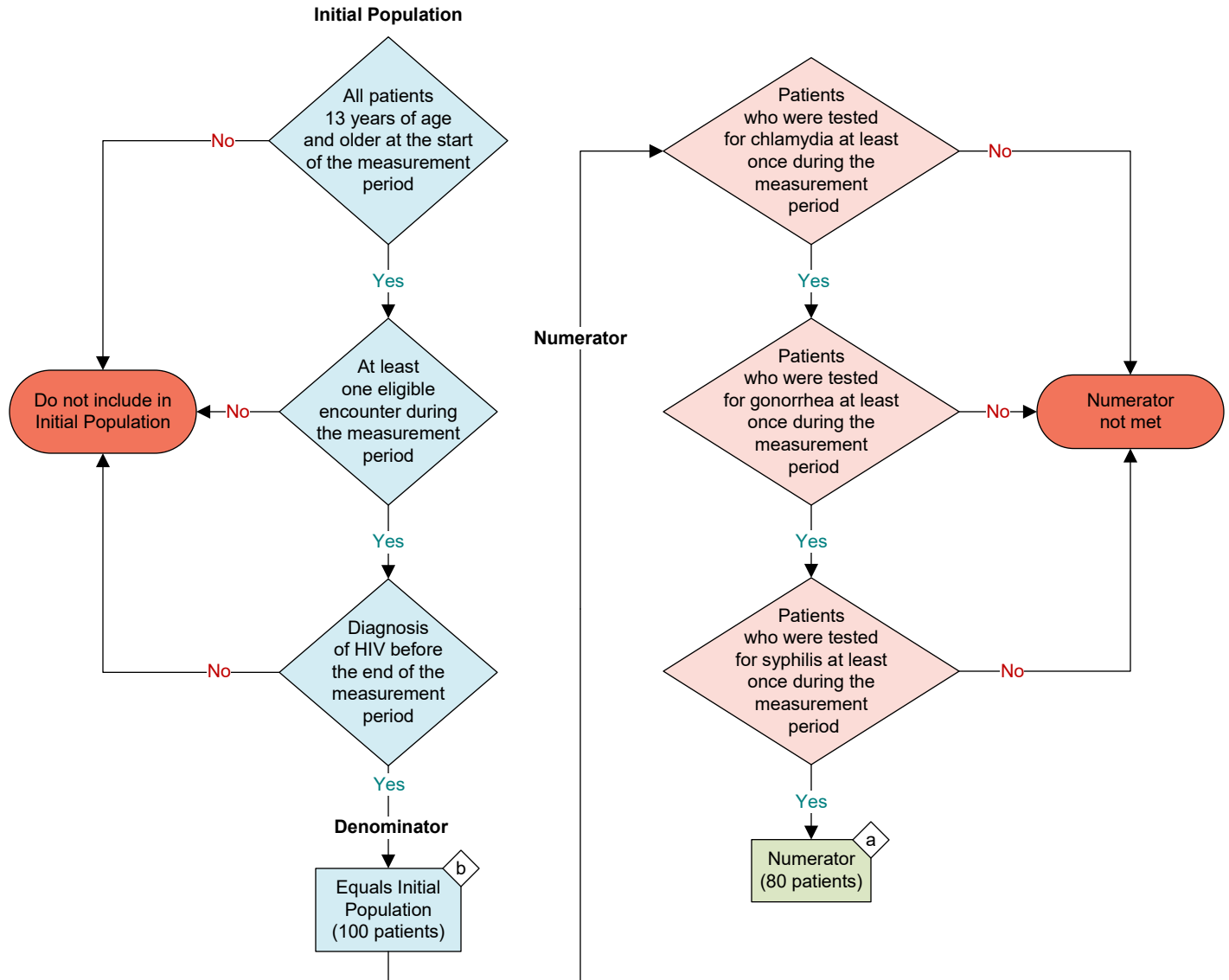
**2026 eCQM Flow**  
**eCQM Identifier: CMS1188v3**  
**CBE Number: 3755e**

**NOTE:** This flow diagram represents an overview of population criteria requirements. **Refer to the eCQM specification for a complete list of data elements included in this measure and required for submission.**

## Sexually Transmitted Infection (STI) Testing for People with HIV

Percentage of patients 13 years of age and older with a diagnosis of Human Immunodeficiency Virus (HIV) who had tests for syphilis, gonorrhea, and chlamydia performed within the measurement period

This eCQM is a patient-based measure



### Performance Rate =

### Sample Calculation

Numerator (a = 80 patients)

Denominator (b = 100 patients)

$$= \frac{80}{100} = 80\%$$

**eCQM Identifier: CMS1188v3****CBE Number: 3755e****eCQM Title: Sexually Transmitted Infection (STI) Testing for People with HIV**

**NOTE:** This flow diagram represents an overview of population criteria requirements. Refer to the eCQM specification for a complete list of data elements included in this measure and required for submission.

**Description:** Percentage of patients 13 years of age and older with a diagnosis of Human Immunodeficiency Virus (HIV) who had tests for syphilis, gonorrhea, and chlamydia performed within the measurement period.

**This eCQM is a patient-based measure.**

### **eCQM Flow Narrative**

#### **Initial Population**

Start by identifying the Initial Population, which includes all patients 13 years of age and older at the start of the measurement period with at least one eligible encounter during the measurement period and a diagnosis of HIV before the end of the measurement period.

#### **Denominator**

The Denominator equals the Initial Population. In the sample calculation provided at the end of the eCQM flow, the Denominator is equal to 100 patients.

#### **Numerator**

The Numerator criteria identify a subset of the Denominator population by including patients who were tested for each of the following at least once during the measurement period: chlamydia, gonorrhea, and syphilis. In the sample calculation provided at the end of the eCQM flow, the Numerator is equal to 80 patients.

#### **Sample Calculation**

A sample calculation is provided to help determine how the measure performance rate is derived. The measure performance rate is calculated by dividing the Numerator (total equals 80 patients) by the Denominator (total equals 100 patients), which is equal to a score of 80 percent.