

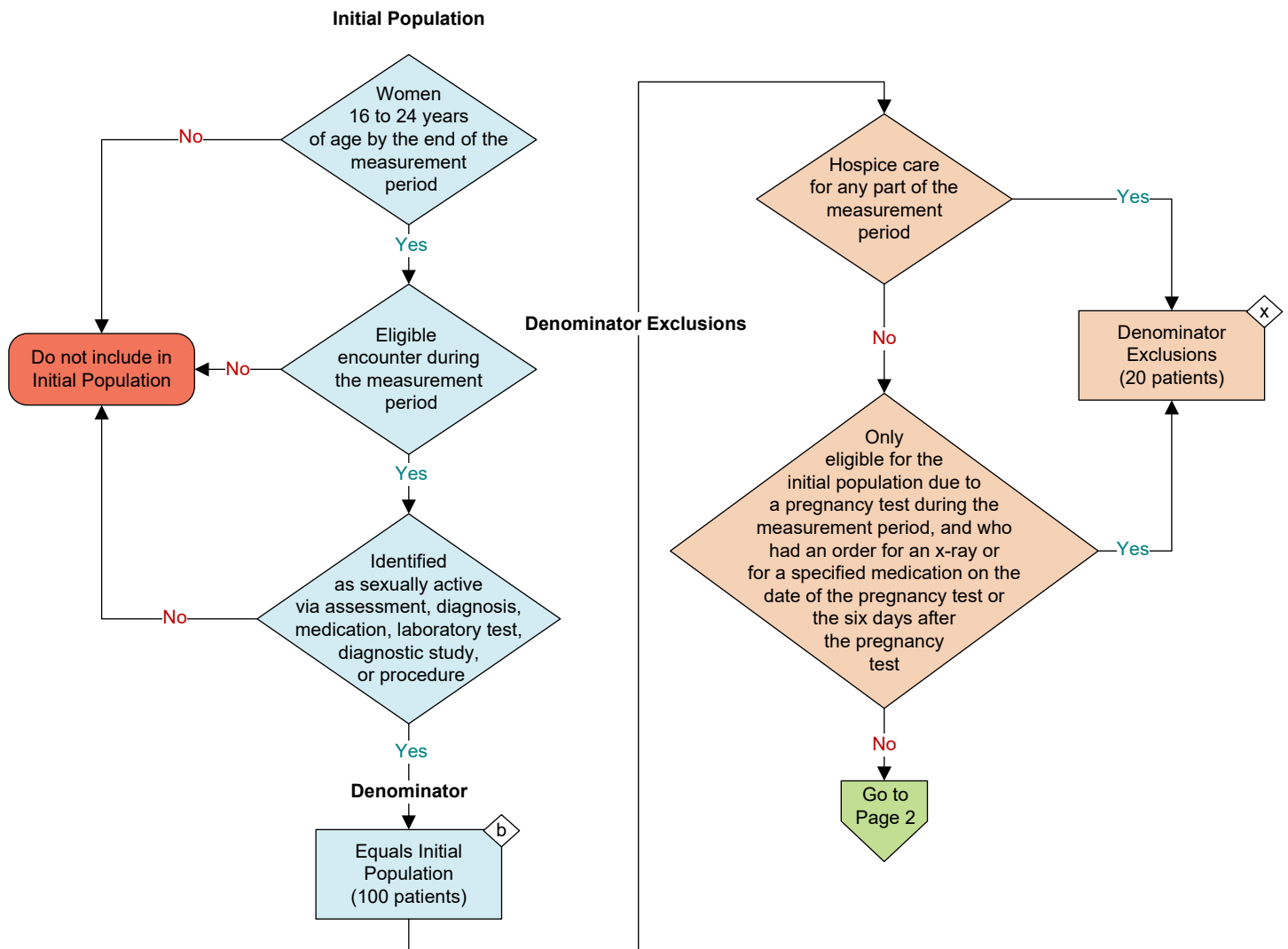
**2026 eCQM Flow**  
**eCQM Identifier: CMS153v14**

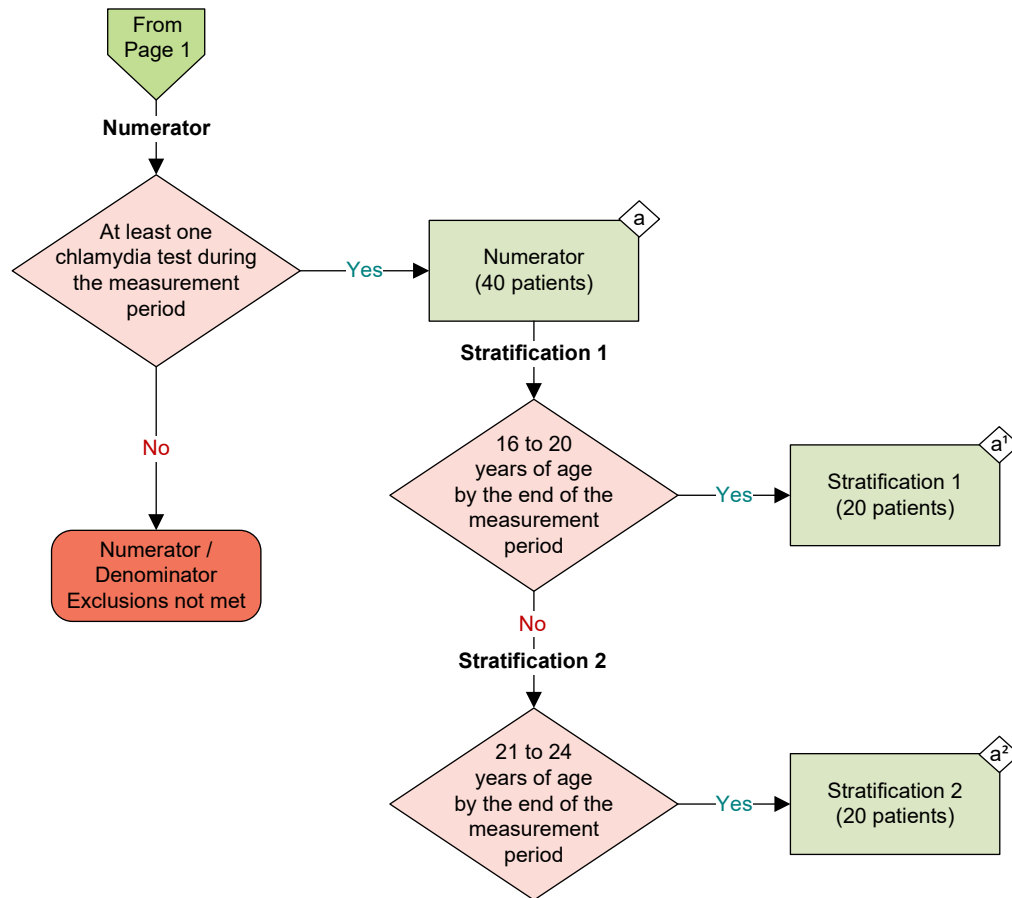
**NOTE:** This flow diagram represents an overview of population criteria requirements. **Refer to the eCQM specification for a complete list of data elements included in this measure and required for submission.**

**Chlamydia Screening in Women**

Percentage of women 16-24 years of age who were identified as sexually active at any time during the measurement period and who had at least one test for chlamydia during the measurement period

**This eCQM is a patient-based measure**





### Sample Calculation

#### Performance Rate =

$$\frac{\text{Numerator (a = 40 patients)}}{\text{Denominator (b = 100 patients) - Denominator Exclusions (x = 20 patients)}} = \frac{40}{80} = 50\%$$

#### Stratification 1 of Performance Rate =

$$\frac{\text{Numerator (a¹ = 20 patients)}}{\text{Denominator (b = 100 patients) - Denominator Exclusions (x = 20 patients)}} = \frac{20}{80} = 25\%$$

#### Stratification 2 of Performance Rate =

$$\frac{\text{Numerator (a² = 20 patients)}}{\text{Denominator (b = 100 patients) - Denominator Exclusions (x = 20 patients)}} = \frac{20}{80} = 25\%$$

**eCQM Identifier: CMS153v14**  
**eCQM Title: Chlamydia Screening in Women**

**NOTE:** This flow diagram represents an overview of population criteria requirements. Refer to the eCQM specification for a complete list of data elements included in this measure and required for submission.

**Description:** Percentage of women 16 to 24 years of age who were identified as sexually active at any time during the measurement period and who had at least one test for chlamydia during the measurement period.

**This eCQM is a patient-based measure.**

**eCQM Flow Narrative**

**Initial Population**

Start by identifying the Initial Population, which includes women 16 to 24 years of age by the end of the measurement period with an eligible encounter during the measurement period who were identified as sexually active via assessment on or before the end of the measurement period, diagnosis for any part of the measurement period, active medication for any part of the measurement period, medication order during the measurement period, laboratory test order during the measurement period, diagnostic study order during the measurement period, or procedures during the measurement period.

**Denominator**

The Denominator equals the Initial Population. In the sample calculation provided at the end of the eCQM flow, the Denominator is equal to 100 patients.

**Denominator Exclusions**

The Denominator Exclusions criteria identify a subset of the Denominator population by excluding women who are in hospice care for any part of the measurement period, or who are only eligible for the Initial Population due to a pregnancy test during the measurement period and who had an order for an x-ray or specified medication on the date of the pregnancy test or the six days after the pregnancy test. In the sample calculation provided at the end of the eCQM flow, the Denominator Exclusions are equal to 20 patients.

**Numerator**

The Numerator criteria identify a subset of the Denominator population (that did not meet the Denominator Exclusions criteria) by including women who had at least one chlamydia test during the measurement period. In the sample calculation provided at the end of the eCQM flow, the Numerator is equal to 40 patients.

**Stratification 1**

There are two strata for reporting separately by age group. Stratification 1 includes patients 16 to 20 years of age by the end of the measurement period. In the sample calculation provided at the end of the eCQM flow, Stratification 1 is equal to 20 patients.

**Stratification 2**

There are two strata for reporting separately by age group. Stratification 2 includes patients 21 to 24 years of age by the end of the measurement period. In the sample calculation provided at the end of the eCQM flow, Stratification 2 is equal to 20 patients.

**Sample Calculation**

A sample calculation is provided to help determine how the measure performance rate is derived. The measure performance rate is calculated by dividing the Numerator (total equals 40 patients) by the difference between the Denominator (total equals 100 patients) and the Denominator Exclusions (total equals 20 patients), which is equal to a score of 50 percent. Stratification 1 of the performance rate is calculated by dividing the Numerator of Stratification 1 (total equals 20 patients) by the difference between the Denominator (total equals 100 patients) and the Denominator Exclusions (total equals 20 patients), which is equal to a score of 25 percent. Stratification 2 of the performance rate is calculated by dividing the Numerator of Stratification 2 (total equals 20 patients) by the difference between the Denominator (total equals 100 patients) and the Denominator Exclusions (total equals 20 patients), which is equal to a score of 25 percent.