

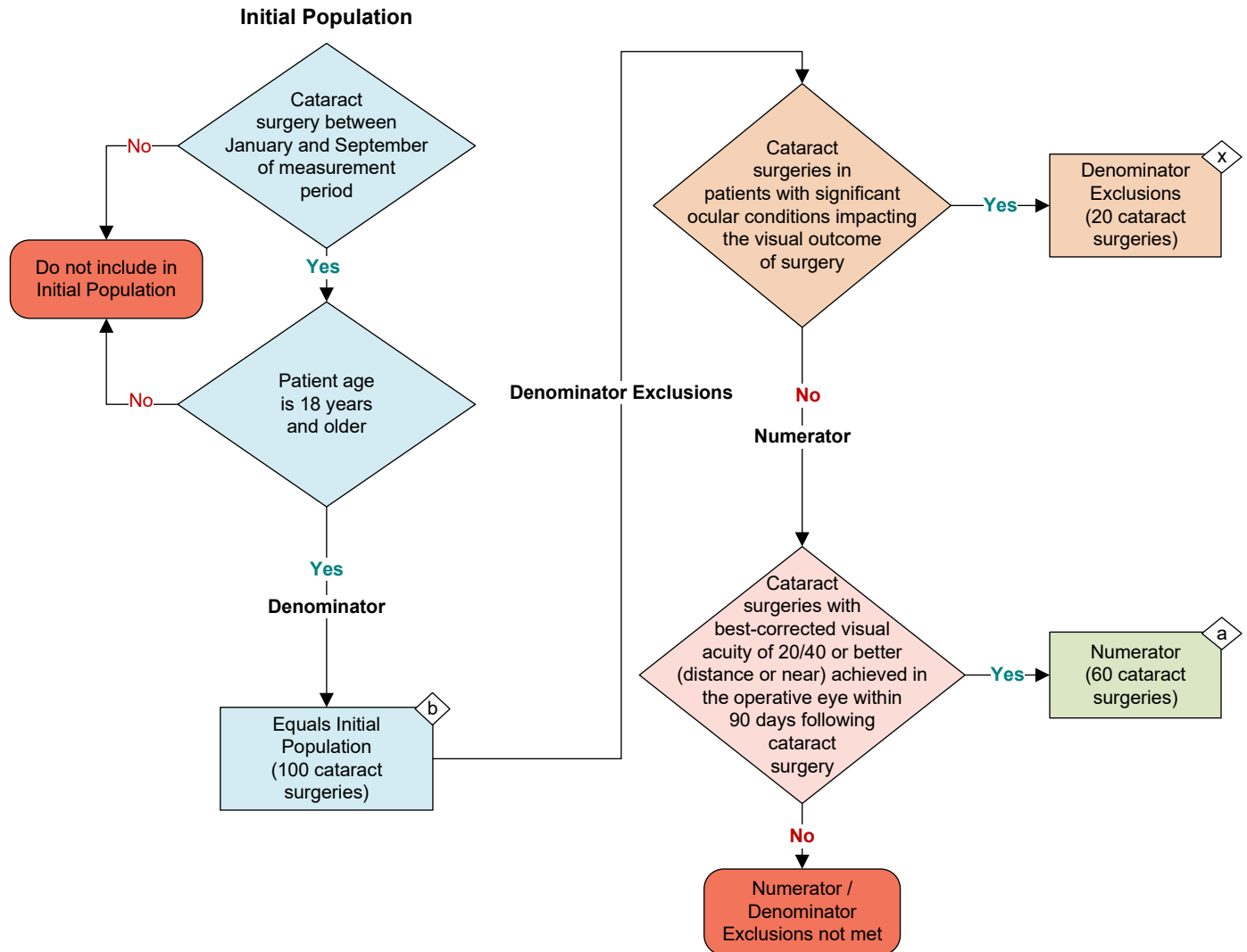
2026 eCQM Flow
eCQM Identifier: CMS133v14
CBE Number: 0565e

NOTE: This flow diagram represents an overview of population criteria requirements. **Refer to the eCQM specification for a complete list of data elements included in this measure and required for submission.**

Cataracts: 20/40 or Better Visual Acuity within 90 Days Following Cataract Surgery

Percentage of cataract surgeries for patients aged 18 and older with a diagnosis of uncomplicated cataract and no significant ocular conditions impacting the visual outcome of surgery and had best-corrected visual acuity of 20/40 or better (distance or near) achieved in the operative eye within 90 days following the cataract surgery

This eCQM is an episode-based measure



Sample Calculation

Performance Rate =

$$\frac{\text{Numerator (a = 60 cataract surgeries)}}{\text{Denominator (b = 100 cataract surgeries) - Denominator Exclusions (x = 20 cataract surgeries)}} = \frac{60}{80} = 75\%$$

eCQM Identifier: CMS133v14

CBE Number: 0565e

eCQM Title: Diabetes: Cataracts: 20/40 or Better Visual Acuity within 90 Days Following Cataract Surgery

NOTE: This flow diagram represents an overview of population criteria requirements. Refer to the eCQM specification for a complete list of data elements included in this measure and required for submission.

Description: Percentage of cataract surgeries for patients aged 18 and older with a diagnosis of uncomplicated cataract and no significant ocular conditions impacting the visual outcome of surgery and had best-corrected visual acuity of 20/40 or better (distance or near) achieved in the operative eye within 90 days following the cataract surgery.

This eCQM is an episode-based measure.

eCQM Flow Narrative

Initial Population

Start by identifying the Initial Population, which includes cataract surgeries between January and September of the measurement period for patients 18 years of age and older.

Denominator

The Denominator equals the Initial Population. In the sample calculation provided at the end of the eCQM flow, the Denominator is equal to 100 cataract surgeries.

Denominator Exclusions

The Denominator Exclusions criteria identify a subset of the Denominator population by excluding cataract surgeries in patients with significant ocular conditions impacting the visual outcome of surgery. The significant ocular conditions include: amblyopia, burn confined to eye and adnexa, cataracts secondary to ocular disorders, congenital cataract, mature or hypermature cataract, posterior polar cataract, central corneal ulcer, certain types of iridocyclitis, choroidal degenerations, choroidal detachment, choroidal hemorrhage and rupture, cloudy cornea, corneal edema, disorders of cornea including corneal opacity, degeneration of macula and posterior pole, degenerative disorders of globe, diabetic macular edema, diabetic retinopathy disorders of optic chiasm, disorders of visual cortex, disseminated chorioretinitis and disseminated retinochoroiditis, focal chorioretinitis and focal retinochoroiditis, glaucoma, hereditary dystrophies (choroidal, corneal, retinal), hypotony of eye, injury to optic nerve and pathways, macular scare of posterior polar, morgagnian cataract, nystagmus and other irregular eye movements, open wound of eyeball, optic atrophy, optic neuritis, pathologic myopia, posterior lenticonus, prior penetrating keratoplasty, purulent endophthalmitis, retinal detachment with retinal defect, retinal vascular occlusion, retrolental fibroplasias, scleritis, separation of retinal layers, traumatic cataract, uveitis, vascular disorders of iris and ciliary body, and visual field defects.

In the sample calculation provided at the end of the eCQM flow, the Denominator Exclusions are equal to 20 cataract surgeries.

Numerator

The Numerator criteria identify a subset of the Denominator population (that did not meet the Denominator Exclusions criteria) by including cataract surgeries with best-corrected visual acuity of 20/40 or better (distance or near) achieved in the operative eye within 90 days following cataract surgery. In the sample calculation provided at the end of the eCQM flow, the Numerator is equal to 60 cataract surgeries.

Sample Calculation

A sample calculation is provided to help determine how the measure performance rate is derived. The measure performance rate is calculated by dividing the Numerator (total equals 60 cataract surgeries) by the difference between the Denominator (total equals 100 cataract surgeries) and the Denominator Exclusions (total equals 20 cataract surgeries), which is equal to a score of 75 percent.