

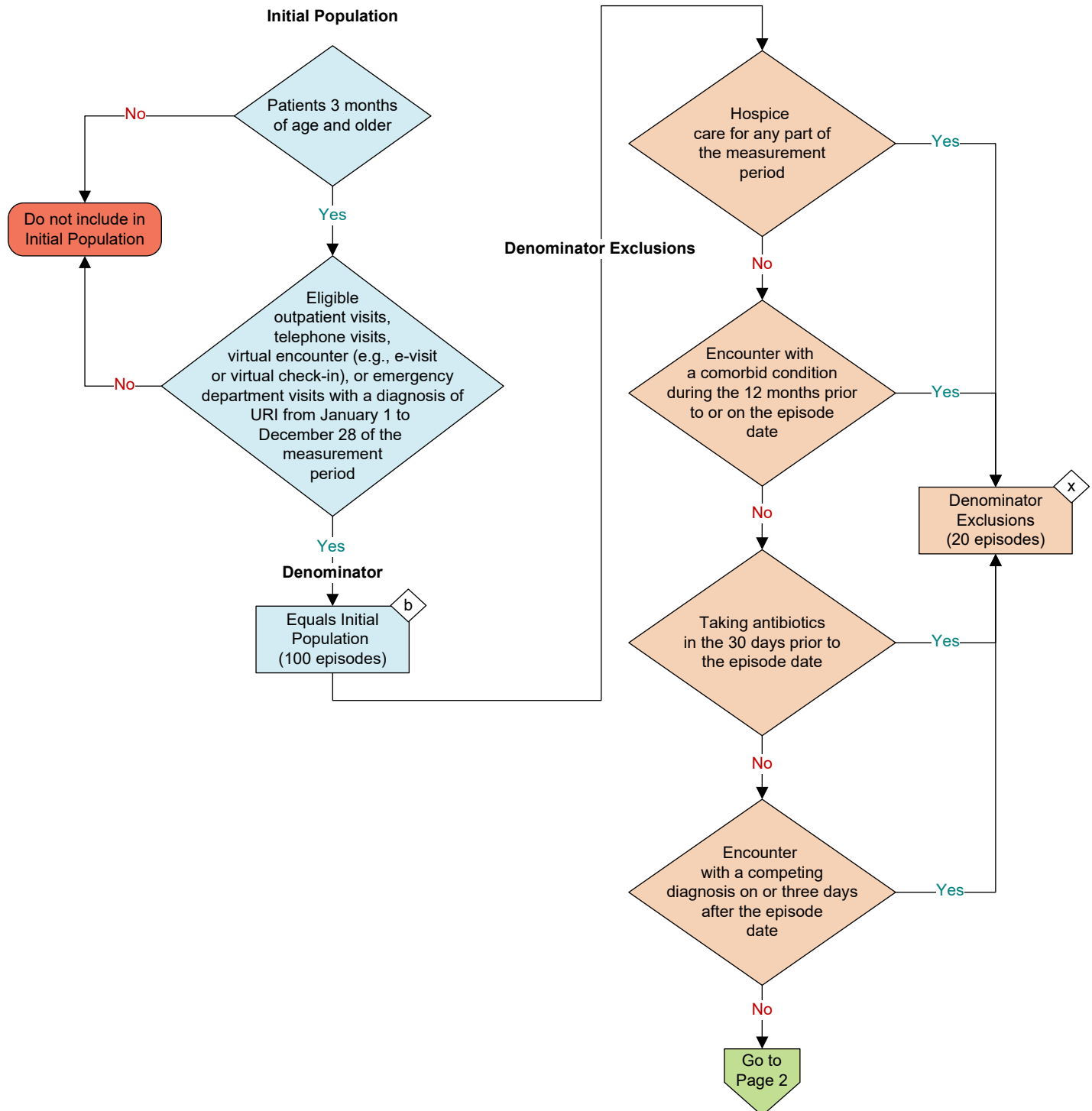
2026 eCQM Flow
eCQM Identifier: CMS154v14

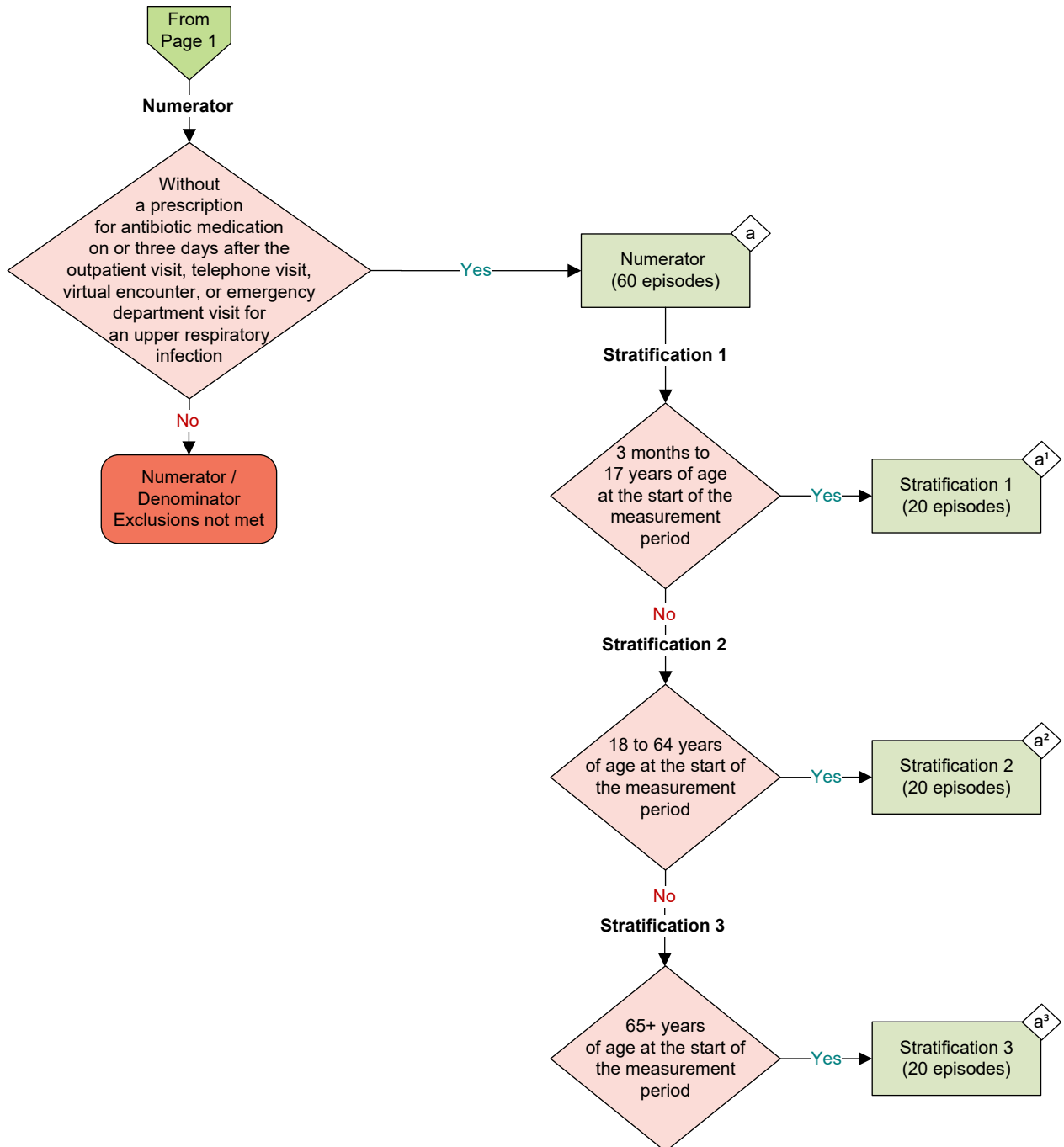
NOTE: This flow diagram represents an overview of population criteria requirements. **Refer to the eCQM specification for a complete list of data elements included in this measure and required for submission.**

Appropriate Treatment for Upper Respiratory Infection (URI)

Percentage of episodes for patients 3 months of age and older with a diagnosis of upper respiratory infection (URI) that did not result in an antibiotic order

This eCQM is an episode-based measure





Sample Calculation

Performance Rate =

$$\frac{\text{Numerator (a = 60 episodes)}}{\text{Denominator (b = 100 episodes) - Denominator Exclusions (x = 20 episodes)}} = \frac{60}{80} = 75\%$$

Stratification 1 of Performance Rate =

$$\frac{\text{Numerator (a^1 = 20 episodes)}}{\text{Denominator (b = 100 episodes) - Denominator Exclusions (x = 20 episodes)}} = \frac{20}{80} = 25\%$$

Stratification 2 of Performance Rate =

$$\frac{\text{Numerator (a^2 = 20 episodes)}}{\text{Denominator (b = 100 episodes) - Denominator Exclusions (x = 20 episodes)}} = \frac{20}{80} = 25\%$$

Stratification 3 of Performance Rate =

$$\frac{\text{Numerator (a^3 = 20 episodes)}}{\text{Denominator (b = 100 episodes) - Denominator Exclusions (x = 20 episodes)}} = \frac{20}{80} = 25\%$$

eCQM Identifier: CMS154v14**eCQM Title: Appropriate Treatment for Upper Respiratory Infection (URI)**

NOTE: This flow diagram represents an overview of population criteria requirements. Refer to the eCQM specification for a complete list of data elements included in this measure and required for submission.

Description: Percentage of episodes for patients 3 months of age and older with a diagnosis of upper respiratory infection (URI) that did not result in an antibiotic order. This eCQM is an episode-based measure.

eCQM Flow Narrative**Initial Population**

Start by identifying the Initial Population, which includes episodes for patients 3 months of age and older with eligible outpatient visits, telephone visits, virtual encounter (i.e., e-visit or virtual check-in), or emergency department visits with a diagnosis of URI from January 1 to December 28 of the measurement period.

Denominator

The Denominator equals the Initial Population. In the sample calculation provided at the end of the eCQM flow, the Denominator is equal to 100 episodes.

Denominator Exclusions

The Denominator Exclusions criteria identify a subset of the Denominator population by excluding URI episodes when the patient had hospice care for any part of the measurement period, URI episodes when the patient had a comorbid condition during the 12 months prior to or on the episode date, URI episodes where the patient is taking antibiotics in the 30 days prior to the episode date, or URI episodes where the patient had a competing diagnosis on or three days after the episode date. In the sample calculation provided at the end of the eCQM flow, the Denominator Exclusions are equal to 20 episodes.

Numerator

The Numerator criteria identify a subset of the Denominator population (that did not meet the Denominator Exclusions criteria) by including URI episodes without a prescription for antibiotic medication on or three days after the outpatient visit, telephone visit, virtual encounter, or emergency department visit for an upper respiratory infection. In the sample calculation provided at the end of the eCQM flow, the Numerator is equal to 60 episodes.

Stratification 1

There are three strata for reporting separately by age group. Stratification 1 includes episodes for patients 3 months to 17 years of age at the start of the measurement period. In the sample calculation provided at the end of the eCQM flow, Stratification 1 is equal to 20 episodes.

Stratification 2

There are three strata for reporting separately by age group. Stratification 2 includes episodes for patients 18 to 64 years of age at the start of the measurement period. In the sample calculation provided at the end of the eCQM flow, Stratification 2 is equal to 20 episodes.

Stratification 3

There are three strata for reporting separately by age group. Stratification 3 includes episodes for patients 65 years of age and older at the start of the measurement period. In the sample calculation provided at the end of the eCQM flow, Stratification 3 is equal to 20 episodes.

Sample Calculation

A sample calculation is provided to help determine how the measure performance rate is derived. The measure performance rate is calculated by dividing the Numerator (total equals 60 episodes) by the difference between the Denominator (total equals 100 episodes) and the Denominator Exclusions (total equals 20 episodes), which is equal to a score of 75 percent. Stratification 1 of the performance rate is calculated by dividing the Numerator of Stratification 1 (total equals 20 episodes) by the difference between the Denominator (total equals 100 episodes) and the Denominator Exclusions (total equals 20 episodes), which is equal to a score of 25 percent. Stratification 2 of the performance rate is calculated by dividing the Numerator of Stratification 2 (total equals 20 episodes) by the difference between the Denominator (total equals 100 episodes) and the Denominator Exclusions (total equals 20 episodes), which is equal to a score of 25 percent. Stratification 3 of the performance rate is calculated by dividing the Numerator of Stratification 3 (total equals 20 episodes) by the difference between the Denominator (total equals 100 episodes) and the Denominator Exclusions (total equals 20 episodes), which is equal to a score of 25 percent.