

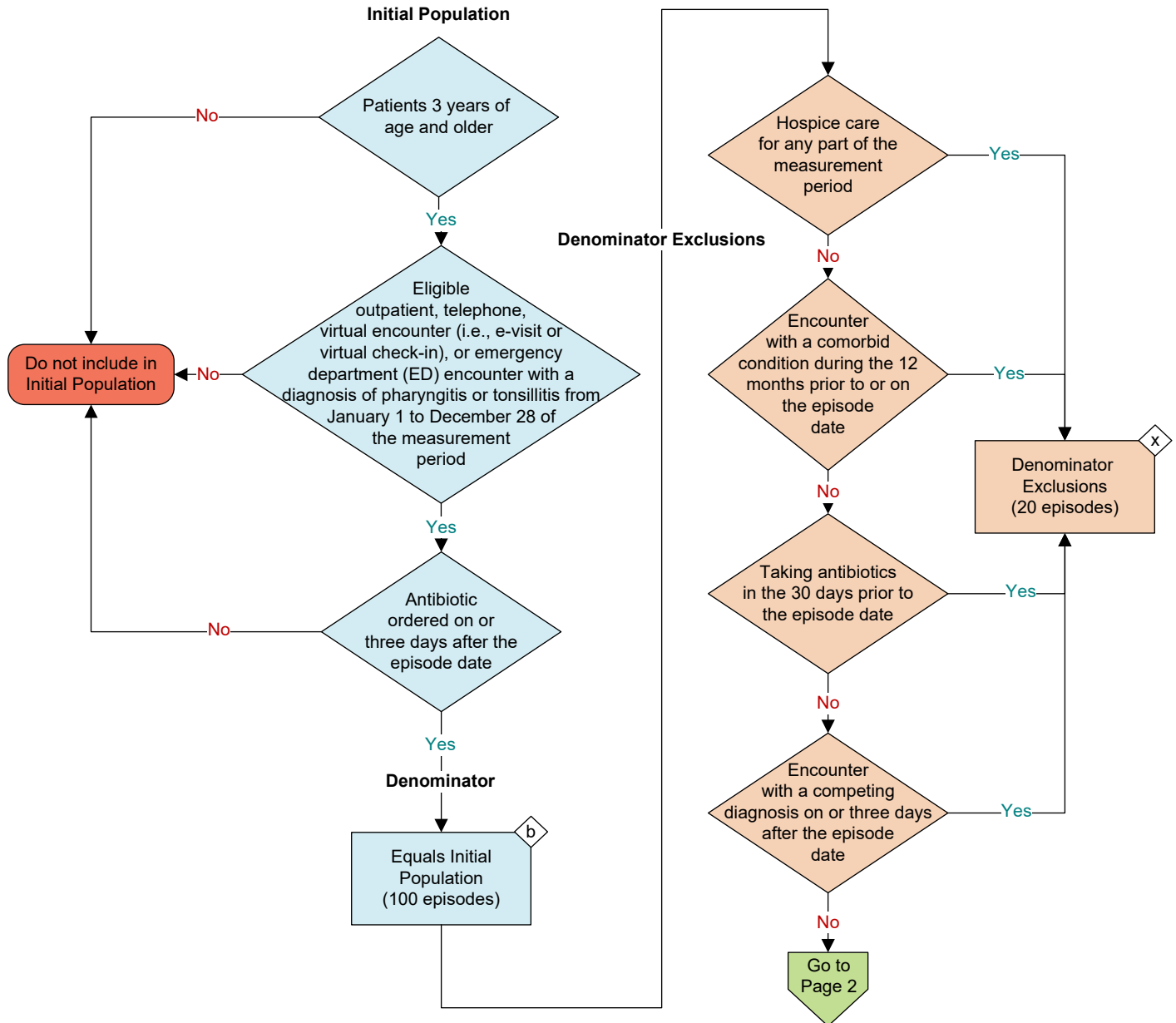
2026 eCQM Flow
eCQM Identifier: CMS146v14

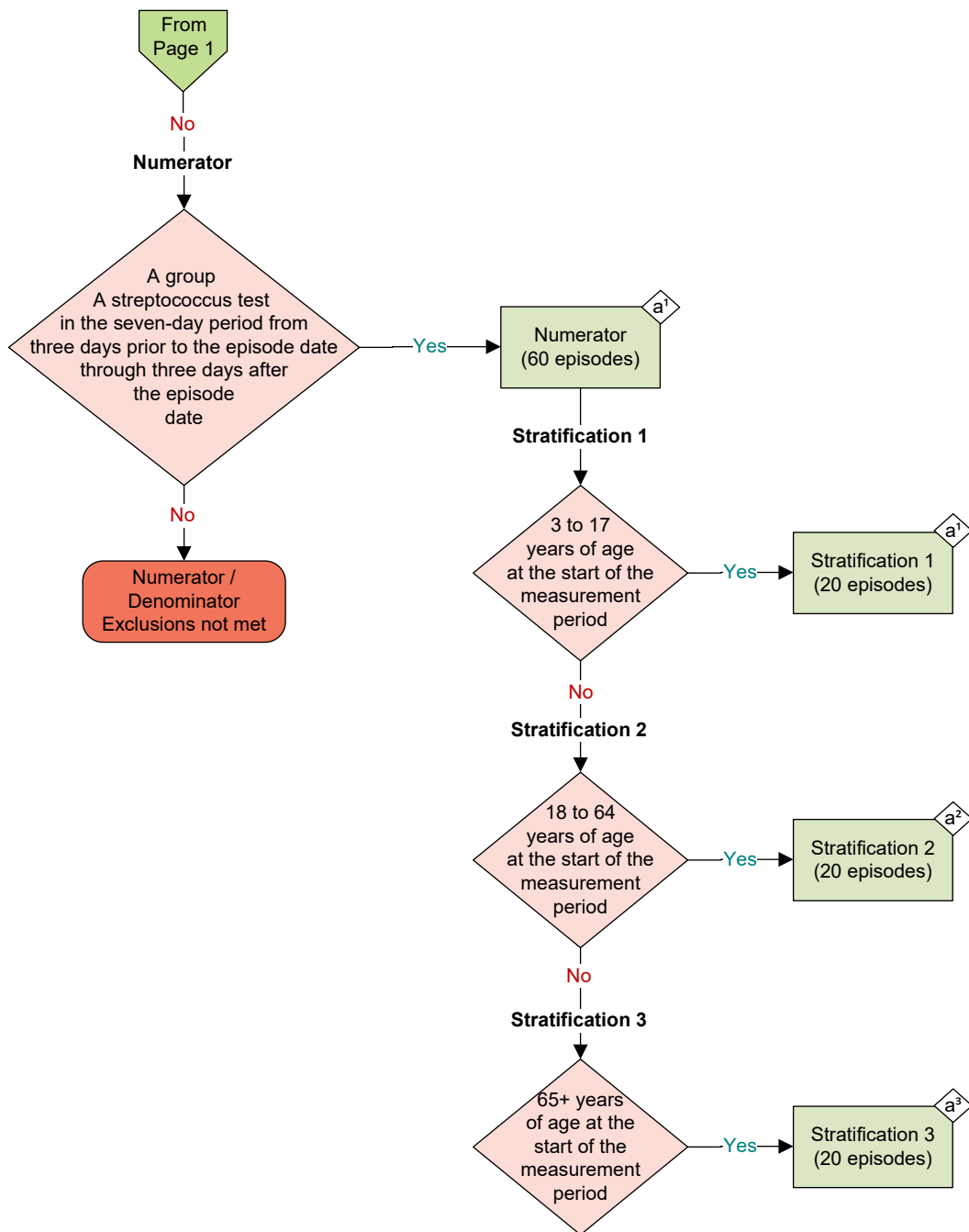
NOTE: This flow diagram represents an overview of population criteria requirements. **Refer to the eCQM specification for a complete list of data elements included in this measure and required for submission.**

Appropriate Testing for Pharyngitis

The percentage of episodes for patients 3 years and older with a diagnosis of pharyngitis that resulted in an antibiotic order on or three days after the episode date and a group A streptococcus (strep) test in the seven-day period from three days prior to the episode date through three days after the episode date

This eCQM is an episode-based measure





Sample Calculation

Performance Rate =

$$\frac{\text{Numerator (a = 60 episodes)}}{\text{Denominator (b = 100 episodes) - Denominator Exclusions (x = 20 episodes)}} = \frac{60}{80} = 75\%$$

Stratification 1 of Performance Rate =

$$\frac{\text{Numerator (a}^1\text{ = 20 episodes)}}{\text{Denominator (b = 100 episodes) - Denominator Exclusions (x = 20 episodes)}} = \frac{20}{80} = 25\%$$

Stratification 2 of Performance Rate =

$$\frac{\text{Numerator (a}^2\text{ = 20 episodes)}}{\text{Denominator (b = 100 episodes) - Denominator Exclusions (x = 20 episodes)}} = \frac{20}{80} = 25\%$$

Stratification 3 of Performance Rate =

$$\frac{\text{Numerator (a}^3\text{ = 20 episodes)}}{\text{Denominator (b = 100 episodes) - Denominator Exclusions (x = 20 episodes)}} = \frac{20}{80} = 25\%$$

eCQM Identifier: CMS146v14**eCQM Title: Appropriate Testing for Pharyngitis**

NOTE: This flow diagram represents an overview of population criteria requirements. Refer to the eCQM specification for a complete list of data elements included in this measure and required for submission.

Description: Percentage of episodes for patients 3 years of age and older with a diagnosis of pharyngitis that resulted in an antibiotic order on or three days after the episode date and a group A streptococcus (strep) test in the seven-day period from three days prior to the episode date through three days after the episode date.

This eCQM is an episode-based measure.

eCQM Flow Narrative**Initial Population**

Start by identifying the Initial Population, which includes patients 3 years and older with an eligible outpatient, telephone, virtual encounter (i.e., e-visit or virtual check-in), or emergency department (ED) encounter with a diagnosis of pharyngitis or tonsillitis from January 1 to December 28 of the measurement period and an antibiotic order on or three days after the episode date.

Denominator

The Denominator equals the Initial Population. In the sample calculation provided at the end of the eCQM flow, the Denominator is equal to 100 episodes.

Denominator Exclusions

The Denominator Exclusions criteria identify a subset of the Denominator population by excluding pharyngitis episodes when the patient had hospice care for any part of the measurement period, pharyngitis episodes when the patient had a comorbid condition during the 12 months prior to or on the episode date, pharyngitis episodes where the patient is taking antibiotics in the 30 days prior to the episode date, or pharyngitis episodes where the patient had a competing diagnosis on or three days after the episode date. In the sample calculation provided at the end of the eCQM flow, the Denominator Exclusions are equal to 20 episodes.

Numerator

The Numerator criteria identify a subset of the Denominator population (that did not meet the Denominator Exclusions criteria) by including episodes with a group A streptococcus test in the seven-day period from three days prior to the episode date through three days after the episode date. In the sample calculation provided at the end of the eCQM flow, the Numerator is equal to 60 episodes.

Stratification 1

There are three strata for reporting separately by age group. Stratification 1 includes episodes for patients 3 to 17 years of age at the start of the measurement period. In the sample calculation provided at the end of the eCQM flow, Stratification 1 is equal to 20 episodes.

Stratification 2

There are three strata for reporting separately by age group. Stratification 2 includes episodes for patients 18 to 64 years of age at the start of the measurement period. In the sample calculation provided at the end of the eCQM flow, Stratification 2 is equal to 20 episodes.

Stratification 3

There are three strata for reporting separately by age group. Stratification 3 includes episodes for patients 65 years of age and older at the start of the measurement period. In the sample calculation provided at the end of the eCQM flow, Stratification 3 is equal to 20 episodes.

Sample Calculation

A sample calculation is provided to help determine how the measure performance rate is derived. The measure performance rate is calculated by dividing the Numerator (total equals 60 episodes) by the difference between the Denominator (total equals 100 episodes) and the Denominator Exclusions (total equals 20 episodes), which is equal to a score of 75 percent. Stratification 1 of the performance rate is calculated by dividing the Numerator of Stratification 1 (total equals 20 episodes) by the difference between the Denominator (total equals 100 episodes) and the Denominator Exclusions (total equals 20 episodes), which is equal to a score of 25 percent. Stratification 2 of the performance rate is calculated by dividing the Numerator of Stratification 2 (total equals 20 episodes) by the difference between the Denominator (total equals 100 episodes) and the Denominator Exclusions (total equals 20 episodes), which is equal to a score of 25 percent. Stratification 3 of the performance rate is calculated by dividing the Numerator of Stratification 3 (total equals 20 episodes) by the difference between the Denominator (total equals 100 episodes) and the Denominator Exclusions (total equals 20 episodes), which is equal to a score of 25 percent.