

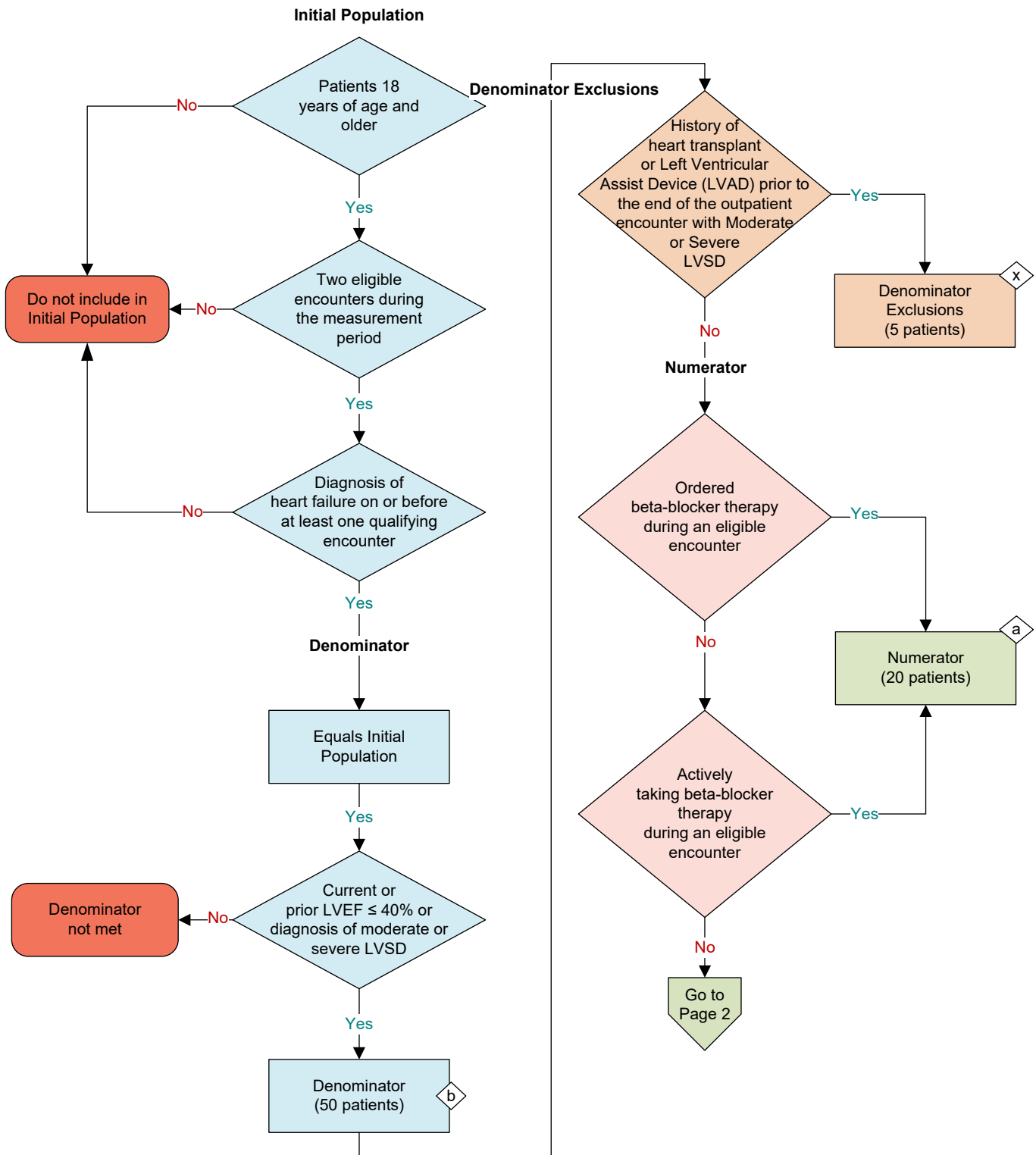
2026 eCQM Flow
eCQM Identifier: CMS144v14
CBE Number: 0083e

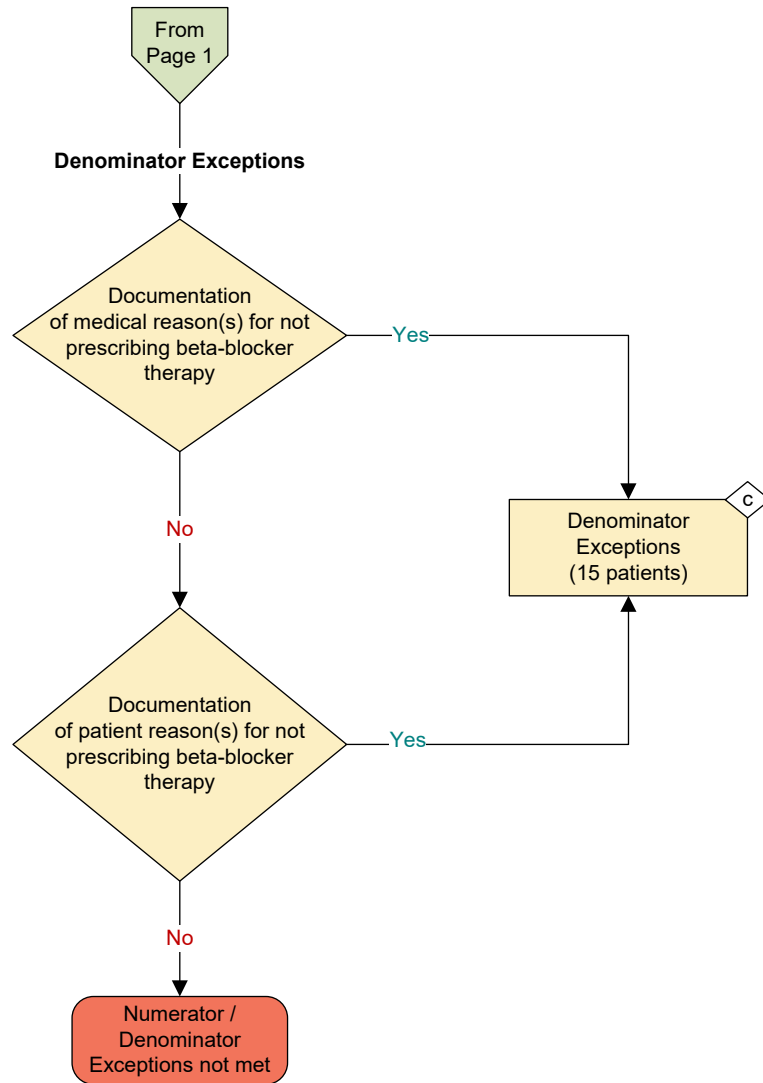
NOTE: This flow diagram represents an overview of population criteria requirements. **Refer to the eCQM specification for a complete list of data elements included in this measure and required for submission.**

Heart Failure (HF): Beta-Blocker Therapy for Left Ventricular Systolic Dysfunction (LVSD)

Percentage of patients aged 18 years and older with a diagnosis of heart failure (HF) with a current or prior left ventricular ejection fraction (LVEF) $\leq 40\%$ who were prescribed or already taking beta-blocker therapy during the measurement period

This eCQM is a patient-based measure





Sample Calculation

Performance Rate =

$$\frac{\text{Numerator (a = 20 patients)}}{\text{Denominator (b = 50 patients) - Denominator Exclusions (x = 5 patients) - Denominator Exceptions (c = 15 patients)}} = \frac{20}{30} = 67\%$$

eCQM Identifier: CMS144v14

CBE Number: 0083e

eCQM Title: Heart Failure (HF): Beta-Blocker Therapy for Left Ventricular Systolic Dysfunction (LVSD)

NOTE: This flow diagram represents an overview of population criteria requirements. Refer to the eCQM specification for a complete list of data elements included in this measure and required for submission.

Description: Percentage of cataract surgeries for patients aged 18 and older with a diagnosis of heart failure (HF) with a current or prior left ventricular ejection fraction (LVEF) $\leq 40\%$ who were prescribed or already taking beta-blocker therapy during the measurement period.

This eCQM is a patient-based measure.

eCQM Flow Narrative

Outpatient Setting:

Initial Population

Start by identifying the Initial Population, which includes patients 18 years and older with two eligible encounters during the measurement period and a diagnosis of heart failure on or before at least one qualifying encounter. Note that this measure should be reported once per patient.

Denominator

The Denominator criteria further constrain the Initial Population to patients with current or prior moderate or severe LVSD (e.g., LVEF less than or equal to 40 percent or diagnosis of moderate or severe LVSD). In the sample calculation provided at the end of the eCQM flow, the Denominator is equal to 50 patients.

Denominator Exclusions

The Denominator Exclusions criteria identify a subset of the Denominator population by excluding patients who have a history of heart transplant or a Left Ventricular Assist Device (LVAD) prior to the end of the outpatient encounter with Moderate or Severe LVSD. In the sample calculation provided at the end of the eCQM flow, the Denominator Exclusions are equal to 5 patients.

Numerator

The Numerator criteria identify a subset of the Denominator population by including patients who were ordered beta-blocker therapy during an eligible encounter or patients who were actively taking beta-blocker therapy through the end of an eligible encounter. In the sample calculation provided at the end of the eCQM flow, the Numerator is equal to 20 patients.

Denominator Exceptions

The Denominator Exceptions criteria identify patients from the Denominator that did not meet the Numerator population criteria due to documentation of a medical reason(s) or patient reason(s) for not prescribing beta-blocker therapy. In the sample calculation provided at the end of the eCQM flow, the Denominator Exceptions are equal to 15 patients.

Sample Calculation

A sample calculation is provided to help determine how the measure performance rate is derived. The measure performance rate is calculated by dividing the Numerator (total equals 20 patients) by the difference between the Denominator (total equals 50 patients), and the Denominator Exclusions (total equals 5 patients) and the Denominator Exceptions (total equals 15 patients), which is equal to a score of 67 percent.