

2026 eCQM Flow
eCQM Identifier: CMS128v14

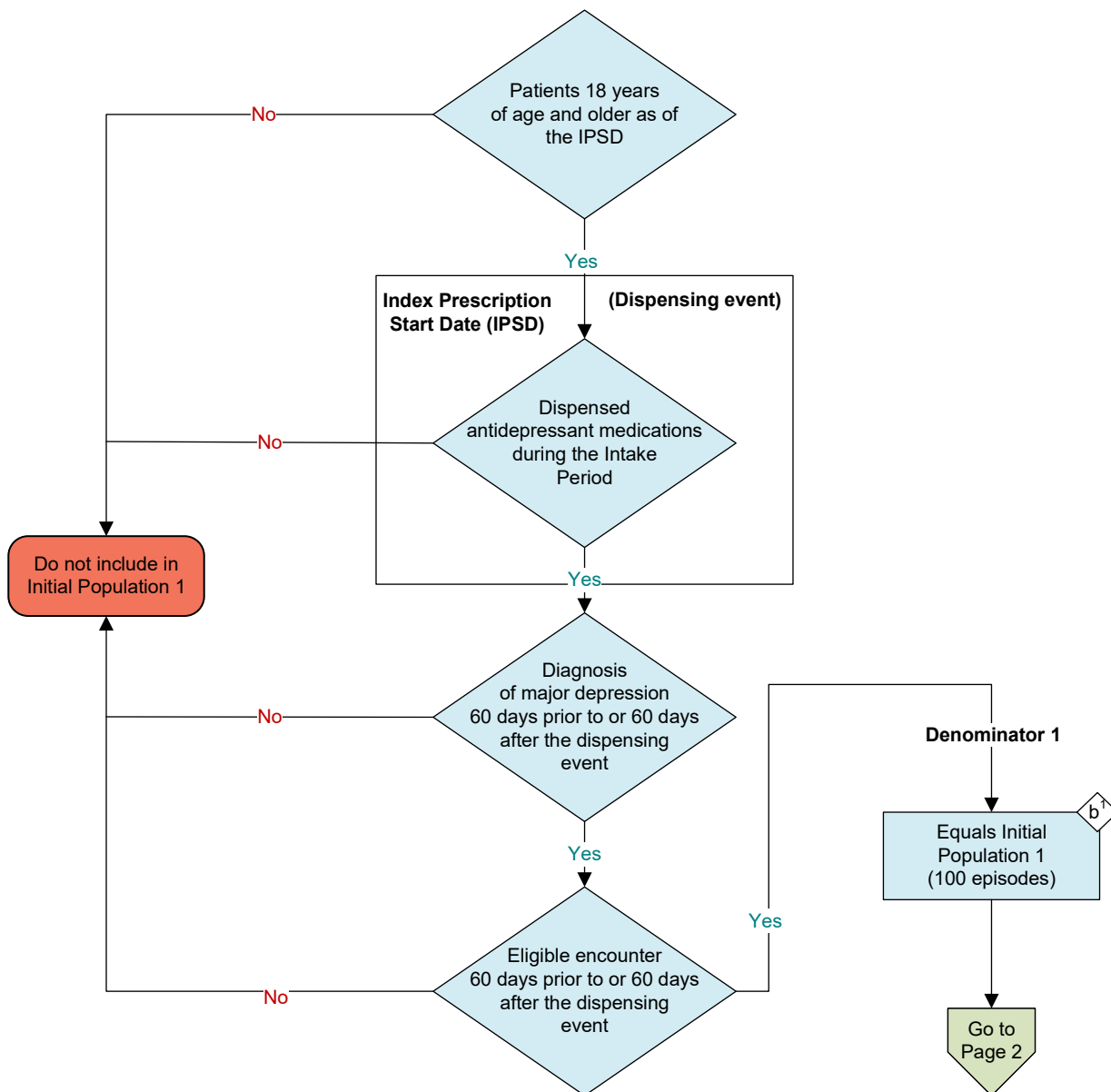
NOTE: This flow diagram represents an overview of population criteria requirements. **Refer to the eCQM specification for a complete list of data elements included in this measure and required for submission.**

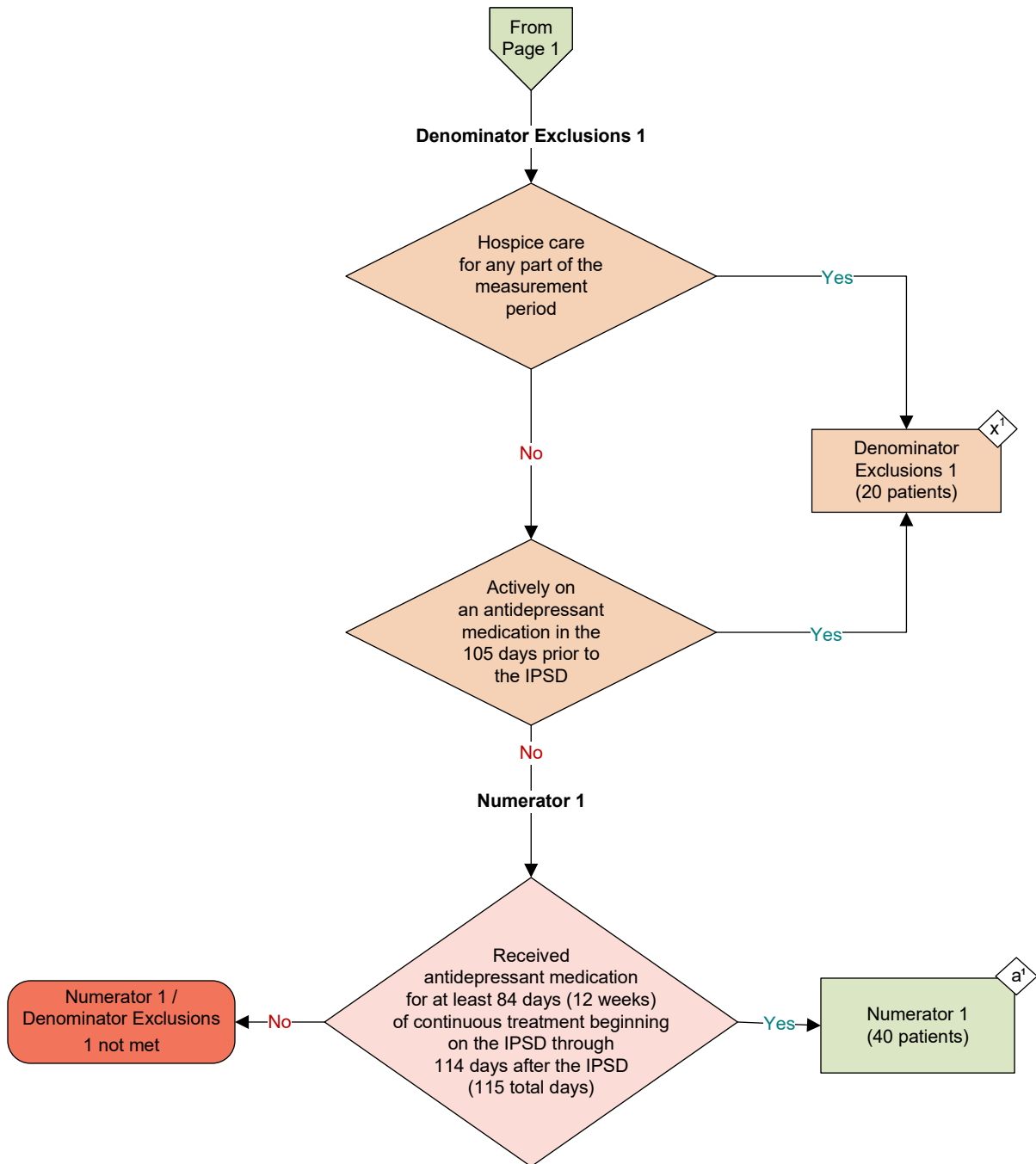
Antidepressant Medication Management

Percentage of patients 18 years of age and older who were treated with antidepressant medication, had a diagnosis of major depression, and who remained on an antidepressant medication treatment. Two rates are reported.
 a. Percentage of patients who remained on an antidepressant medication for at least 84 days (12 weeks).
 b. Percentage of patients who remained on an antidepressant medication for at least 180 days (6 months).

This eCQM is a patient-based measure

Initial Population 1

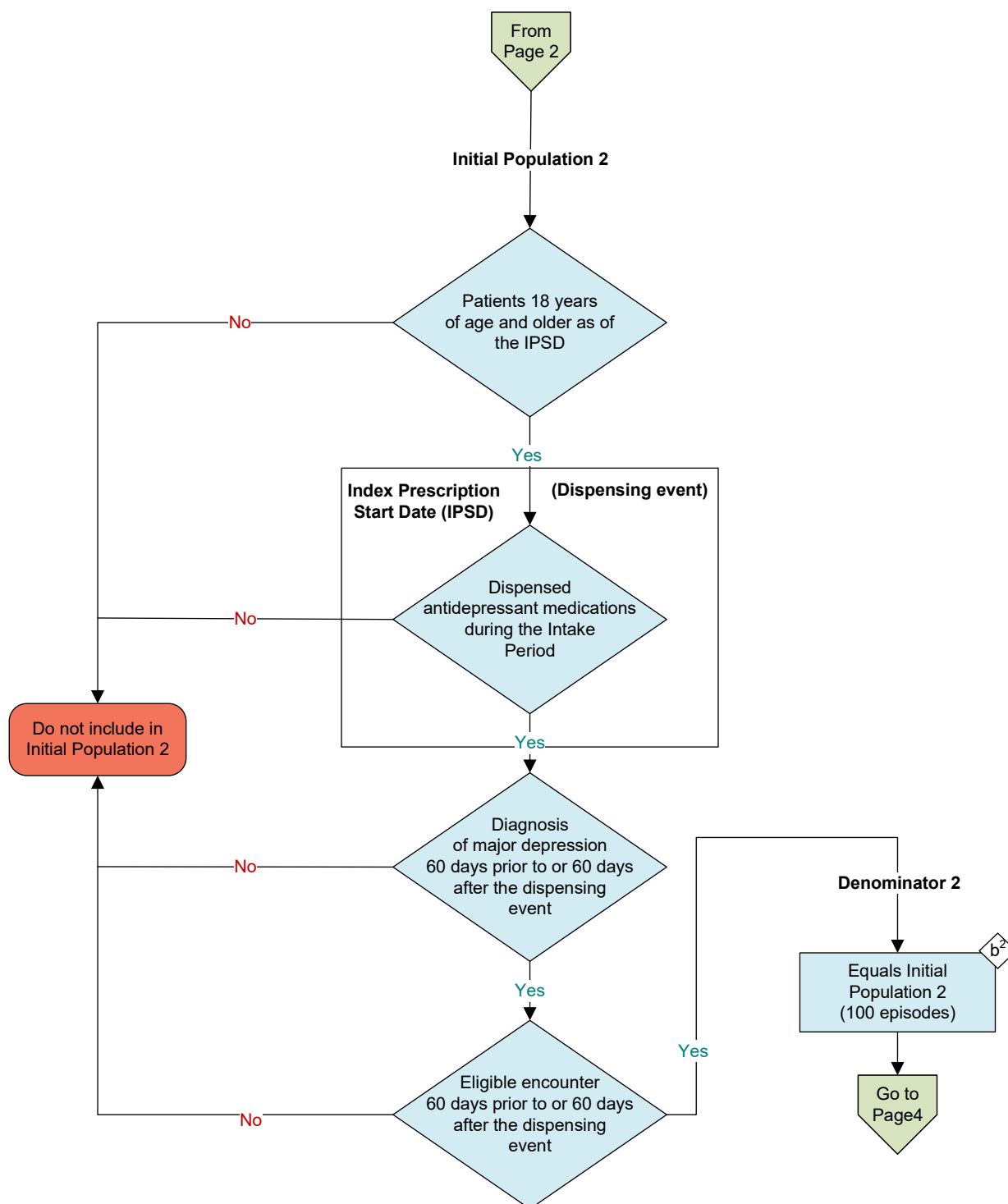




Sample Calculation: Population 1

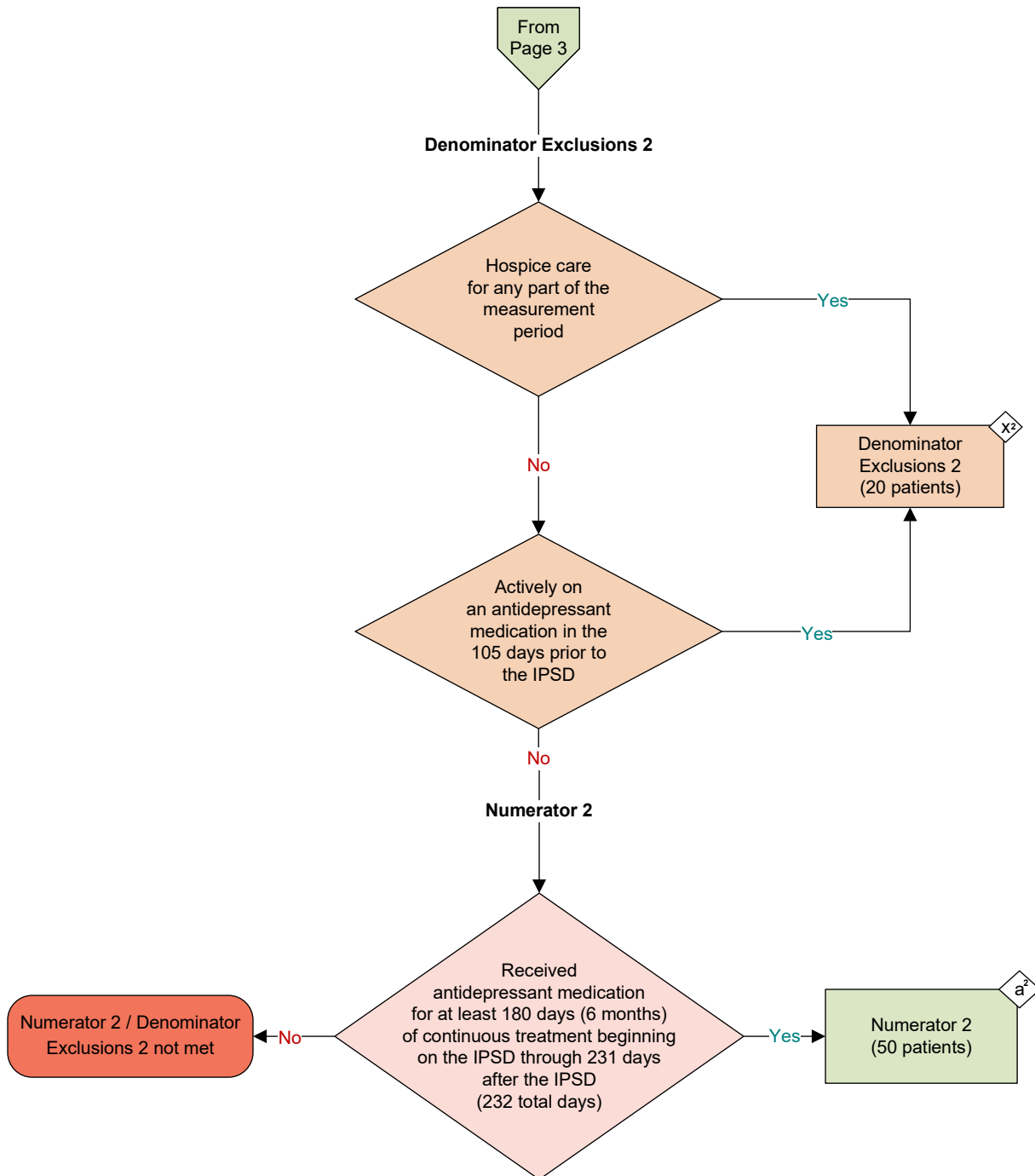
Performance Rate 1 =

$$\frac{\text{Numerator 1 } (a^1 = 40 \text{ patients})}{\text{Denominator 1 } (b^1 = 100 \text{ patients}) - \text{Denominator Exclusions 1 } (x^1 = 20 \text{ patients})} = \frac{40}{80} = 50 \%$$



2026 eCQM Flow
eCQM Identifier: CMS128v14

Antidepressant Medication Management



Performance Rate 2 =

Sample Calculation: Population 2

$$\frac{\text{Numerator 2 (a}^2 = 50 \text{ patients)}}{\text{Denominator 2 (b}^2 = 100 \text{ patients) - Denominator Exclusions 2 (x}^2 = 20 \text{ patients)}} = \frac{50}{80} = 63\%$$

eCQM Identifier: CMS128v14**eCQM Title: Antidepressant Medication Management**

NOTE: This flow diagram represents an overview of population criteria requirements. Refer to the eCQM specification for a complete list of data elements included in this measure and required for submission.

Description: Percentage of patients 18 years of age and older who were treated with antidepressant medication, had a diagnosis of major depression, and who remained on an antidepressant medication treatment. Two rates are reported.

- a. Percentage of patients who remained on an antidepressant medication for at least 84 days (12 weeks).
- b. Percentage of patients who remained on an antidepressant medication for at least 180 days (6 months).

This eCQM is a patient-based measure.

eCQM Flow Narrative**Initial Population 1**

Start by identifying the Initial Population 1, which includes patients 18 years of age and older as of the Index Prescription Start Date (IPSD) (earliest dispensing event) in which they were dispensed antidepressant medications during the Intake Period, had a diagnosis of major depression 60 days prior to, or 60 days after the dispensing event, and had an eligible encounter 60 days prior to, or 60 days after the dispensing event.

Denominator 1

Denominator 1 equals the Initial Population 1. In the sample calculation for population 1 provided on page 2, Denominator 1 is equal to 100 patients.

Denominator Exclusions 1

The Denominator Exclusions 1 criteria identify a subset of the Denominator 1 population by excluding patients who are in hospice care for any part of the measurement period or patients who were actively on an antidepressant medication in the 105 days prior to the IPSD. In the sample calculation for population 1 provided on page 2, the Denominator Exclusions are equal to 20 patients.

Numerator 1

The Numerator 1 criteria identify a subset of the Denominator 1 population (that did not meet the Denominator Exclusions 1 criteria) by including patients who received antidepressant medication for at least 84 days (12 weeks) of continuous treatment beginning on the IPSD through 114 days after the IPSD (115 total days). In the sample calculation for population 1 provided on page 2, Numerator 1 is equal to 40 patients.

Sample Calculation 1

A sample calculation for population 1 is provided to help determine how the measure performance rate 1 is derived. The measure performance rate 1 is calculated by dividing the Numerator 1 (total equals 40 patients) by the difference between the Denominator 1 (total

equals 100 patients) and the Denominator Exclusions 1 (total equals 20 patients), which is equal to a score of 50 percent.

Initial Population 2

Continue by identifying the Initial Population 2, which includes patients 18 years of age and older as of the Index Prescription Start Date (IPSD) (earliest dispensing event) in which they were dispensed antidepressant medications during the Intake Period, had a diagnosis of major depression 60 days prior to, or 60 days after the dispensing event, and had an eligible encounter 60 days prior to, or 60 days after the dispensing event.

Denominator 2

Denominator 2 equals the Initial Population 2. In the sample calculation for population 2 provided on page 4, Denominator 2 is equal to 100 patients.

Denominator Exclusions 2

The Denominator Exclusions 2 criteria identify a subset of the Denominator 2 population by excluding patients who are in hospice care for any part of the measurement period or patients who were actively on an antidepressant medication in the 105 days prior to the IPSD. In the sample calculation for population 2 provided on page 4, the Denominator Exclusions 2 are equal to 20 patients.

Numerator 2

The Numerator 2 criteria identify a subset of the Denominator 2 population (that did not meet the Denominator Exclusions 2 criteria) by including patients who received antidepressant medications for at least 180 days (6 months) of continuous treatment beginning on the IPSD through 231 days after the IPSD (232 total days). In the sample calculation for population 2 provided on page 4, Numerator 2 is equal to 50 patients.

Sample Calculation: Population 2

A sample calculation for population 2 is provided to help determine how the measure performance rate 2 is derived. The measure performance rate 2 is calculated by dividing the Numerator 2 (total equals 50 patients) by the difference between the Denominator 2 (total equals 100 patients) and the Denominator Exclusions 2 (total equals 20 patients), which is equal to a score of 63 percent.